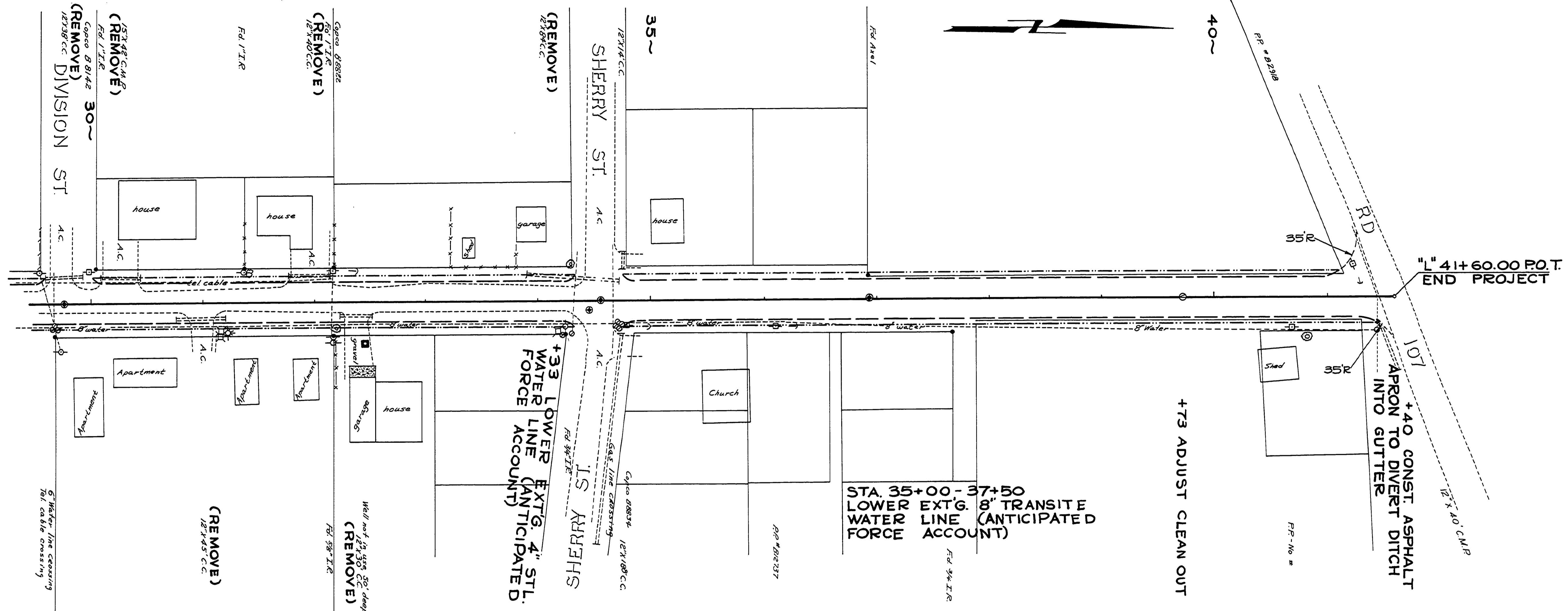


S 21 T 28 S R 6 W W.M.



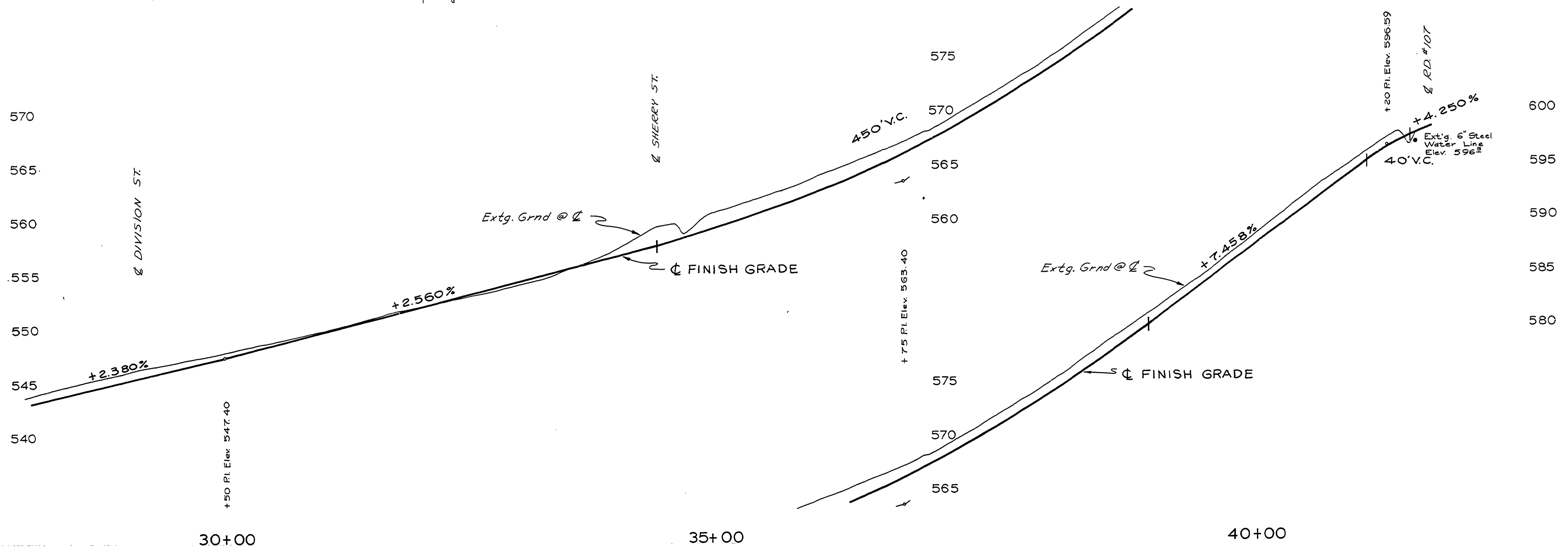
FILED
RECEIVED
COUNTY SURVEYOR
DOUGLAS COUNTY, KANS.

STA. 35+00 - 37+50
LOWER EXTG. 8" TRANSITE
WATER LINE (ANTICIPATED
FORCE ACCOUNT)

+40 CONST. ASPHALT
APRON TO DIVERT DITCH
INTO GUTTER

+73 ADJUST CLEAN OUT

+33 LOWER
WATER EXTG. 4" STL.
FORCE ACCOUNT



AS BUILT 10-9-78 TV
DOUGLAS COUNTY
PUBLIC WORKS DEPARTMENT
GLENHART AVE.
1975 SHT. 4
GEORGE E. GRUBB, DIRECTOR