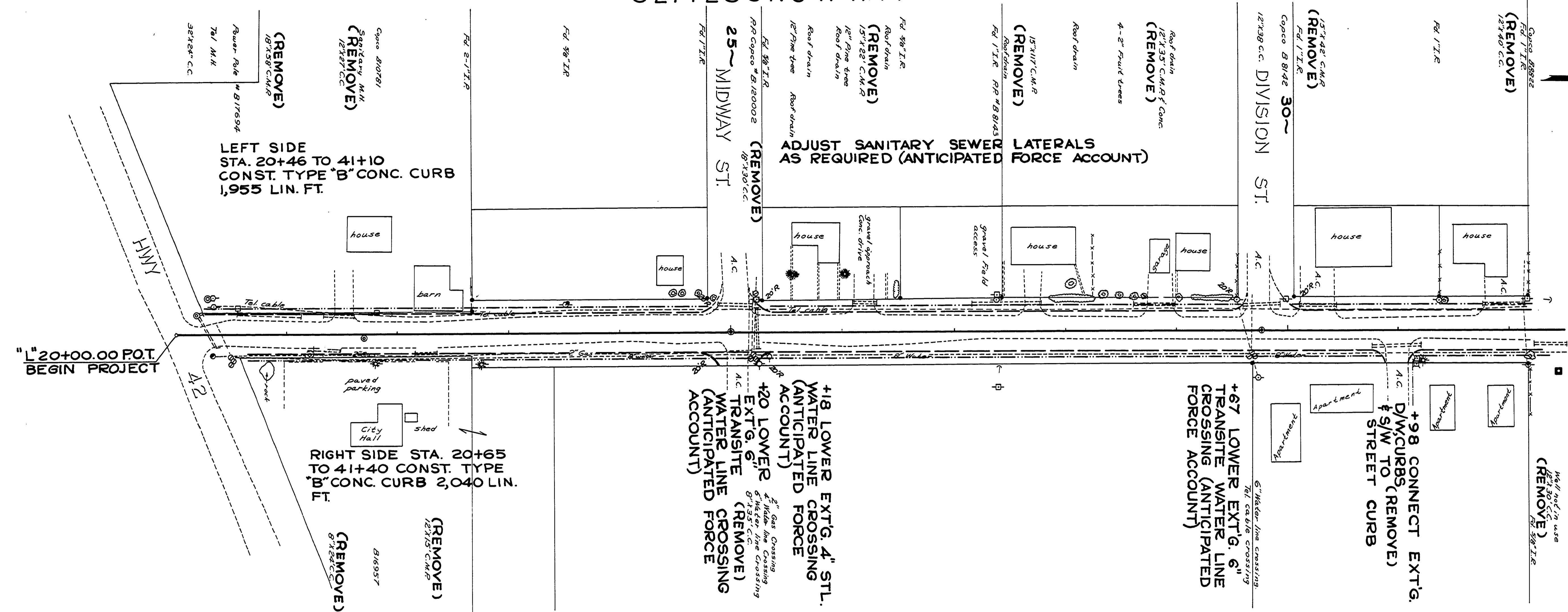
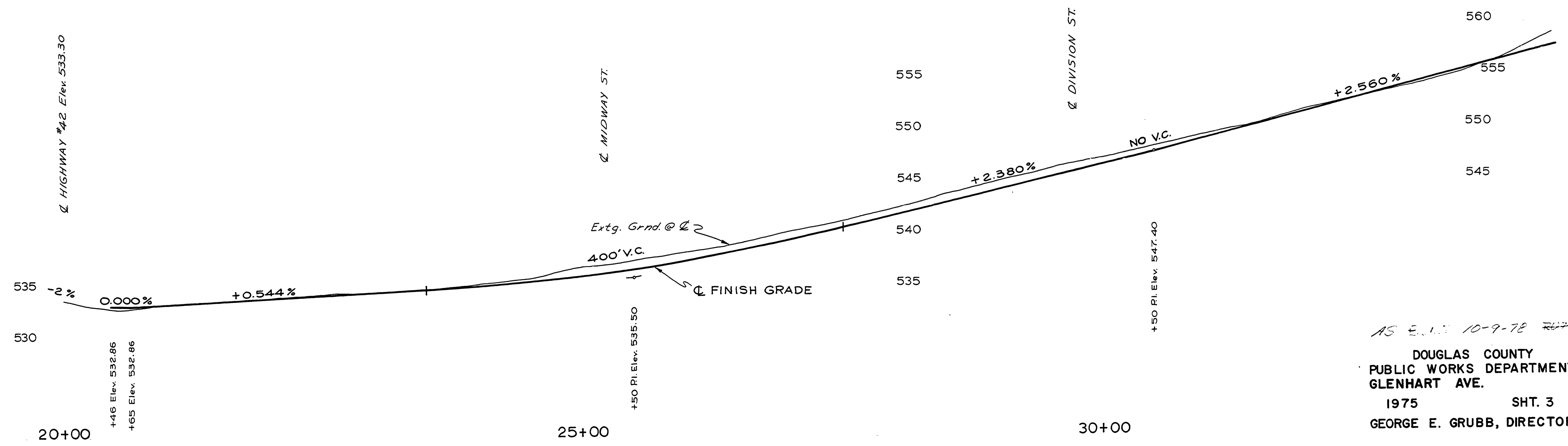


S 21 T 28 S R 6 W W. M.



FILED
RECEIVED
1978
COUNTY SURVEYOR
DUGLAS COUNTY, NEB.



AS E.L.D. 10-9-78 RGT
DOUGLAS COUNTY
PUBLIC WORKS DEPARTMENT
GLENHART AVE.
1975 SHT. 3
GEORGE E. GRUBB, DIRECTOR