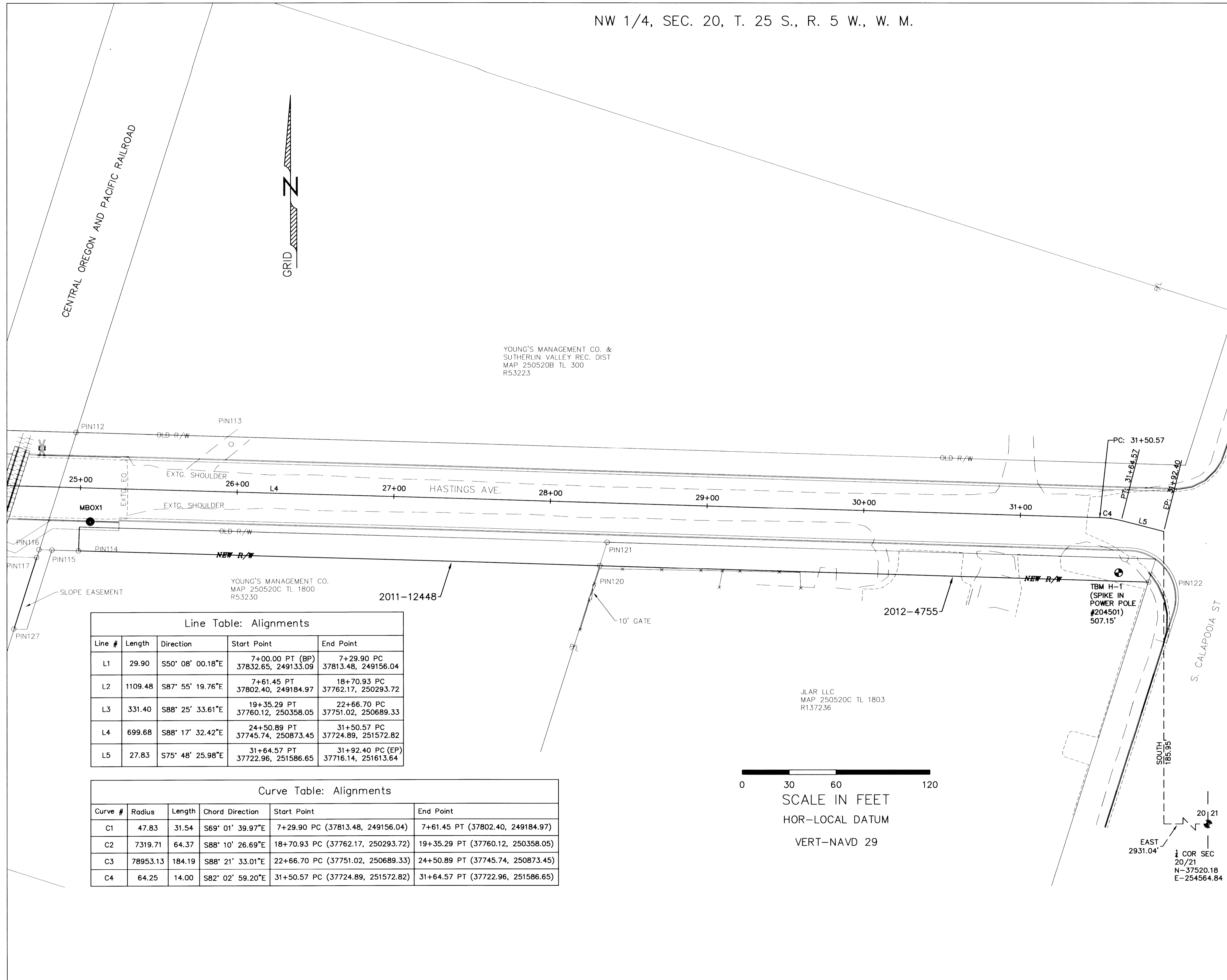


NW 1/4, SEC. 20, T. 25 S., R. 5 W., W. M.



Line Table: Alignments

Line #	Length	Direction	Start Point	End Point
L1	29.90	S50° 08' 00.18"E	7+00.00 PT (BP) 37832.65, 249133.09	7+29.90 PC 37813.48, 249156.04
L2	1109.48	S87° 55' 19.76"E	7+61.45 PT 37802.40, 249184.97	18+70.93 PC 37762.17, 250293.72
L3	331.40	S88° 25' 33.61"E	19+35.29 PT 37760.12, 250358.05	22+66.70 PC 37751.02, 250689.33
L4	699.68	S88° 17' 32.42"E	24+50.89 PT 37745.74, 250873.45	31+50.57 PC 37724.89, 251572.82
L5	27.83	S75° 48' 25.98"E	31+64.57 PT 37722.96, 251586.65	31+92.40 PC (EP) 37716.14, 251613.64

Curve Table: Alignments

Curve #	Radius	Length	Chord Direction	Start Point	End Point
C1	47.83	31.54	S69° 01' 39.97"E	7+29.90 PC (37813.48, 249156.04)	7+61.45 PT (37802.40, 249184.97)
C2	7319.71	64.37	S88° 10' 26.69"E	18+70.93 PC (37762.17, 250293.72)	19+35.29 PT (37760.12, 250358.05)
C3	78953.13	184.19	S88° 21' 33.01"E	22+66.70 PC (37751.02, 250689.33)	24+50.89 PT (37745.74, 250873.45)
C4	64.25	14.00	S82° 02' 59.20"E	31+50.57 PC (37724.89, 251572.82)	31+64.57 PT (37722.96, 251586.65)

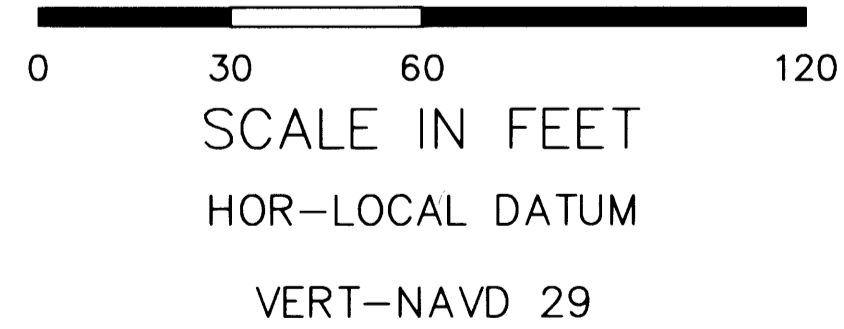


TABLE OF FOUND MONUMENTS

NO.	NORTHING	EASTING	RECORD	DESC.
112	37779.33	25019.70	SC10 2011-001	5/8" I.R. W/CAP "DEA"
113	37771.65	251018.68	NO RECORD	1/2" I.R.
114	37704.23	250921.18	SC10 2011-001	5/8" I.R. W/CAP "DEA"
115	37704.75	250904.34	SC10 2011-001	5/8" I.R. W/CAP "DEA"
116	37704.97	250895.97	SC10 2011-001	5/8" I.R. W/CAP "DEA"
117	37700.04	250894.44	SC10 2011-001	5/8" I.R. W/CAP "DEA"
120	37694.37	251253.82	M157-31	5/8" I.R. W/CAP "HIBBS"
121	37709.24	251258.52	SC10 2011-001	5/8" I.R. W/CAP "DEA"
122	37683.92	251604.00	M157-31	5/8" I.R. W/CAP "HIBBS"
127	37654.51	250879.88	SC10 2011-001	5/8" I.R. W/CAP "DEA"

TABLE OF SET MONUMENTS

STATION	OFFSET	NORTHING	EASTING	ELEV.
MBOX1		37722.68	250928.69	510.98'

- BRASS CAP (AS NOTED)
- ⊕ BENCH MARK (AS NOTED)
- FOUND MONUMENTS (AS NOTED)
- SET MONUMENTS 5/8" x 30" I. R. W/ALUM. CAP STAMPED "DOUGLAS CO RD DPT R-W"

REGISTERED PROFESSIONAL LAND SURVEYOR
Donald G. Becroft Jr.
 OREGON
 JULY 25, 1991
 DONALD G. BECROFT JR.
 2460
 EXPIRES 12-31-13

REVISIONS			DOUGLAS COUNTY DEPARTMENT OF PUBLIC WORKS RIGHT-OF-WAY FOR HASTINGS AVE TAYLOR ST. TO S. CALAPOOIA ST. ROBERT G. PAUL, PE, PLS. DIRECTOR DIRECTOR APPROVAL DATE SHEET NO. OCT. 2012 SHEET 4 OF 4		
DESIGN	CHECK	REVIEW			
DIVISION APPROVED					
DATE					

FILED
 Date: 12-18-2012 By: JC
 This survey consists of:
 Map SC10 2011-001 thru
 Narrative: SC10 2011-005
 Corner Rpt:
 DOUGLAS COUNTY SURVEYOR