

NE 1/4, SEC. 19, NW 1/4, SEC. 20, T. 25 S., R. 5 W., W. M.

FILED
 Date: 12-18-2012 by: JC
 This survey consists of:
 Map: SC1012-003 thru
 Narrative: SC1012-003
 Corner Rpt.
 DOUGLAS COUNTY
 SURVEYOR

WEST
 499.68'
 NE COR. DLC #37
 1 1/2" I. P.
 N-38114.20
 E-248633.42

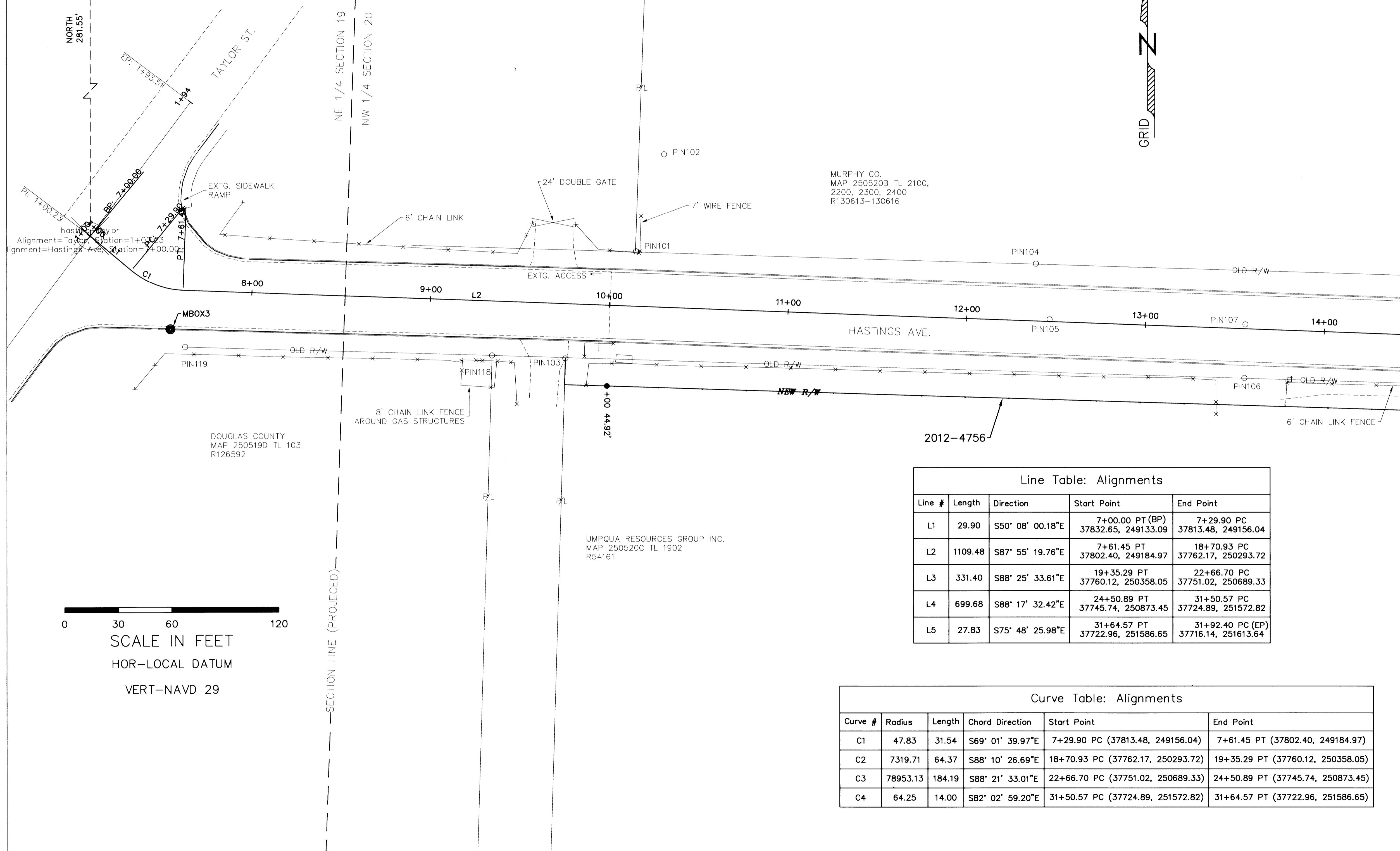


TABLE OF FOUND MONUMENTS

NO.	NORTHING	EASTING	RECORD	DESC.
101	37823.73	249438.32	M133-64 M122-24A	5/8" I.R.W/ CAP "LANG"
102	37877.78	248454.08	DEA POINT	5/8" I.R. W/CAP
103	37764.86	248398.82	SL&W PLAT-E.	1/2" I. P.
104	37816.95	249661.96	M133-64	5/8" I. R.
105	37785.96	249669.61	NO RECORD	1/2" I. P.
106	37753.37	249778.41	M122-24B	5/8" I.R.
107	37783.22	249779.03	SL&W PLAT-E	1" I. P.
118	37765.77	249357.80	M122-24B	5/8" I.R. W/ CAP "LANG"
119	37770.86	249186.11	M122-24B	5/8" I.R. W/ CAP "LANG"

TABLE OF SET MONUMENTS

STATION	OFFSET	NORTHING	EASTING	ELEV.
10+00.00 POT	44.92 RIGHT	37748.86	249421.99	
MBOX3		37780.76	249177.83	503.16'

- BRASS CAP (AS NOTED)
- ⊙ BENCH MARK (AS NOTED)
- FOUND MONUMENTS (AS NOTED)
- SET MONUMENTS 5/8" x 30" I. R. W/ALUM. CAP STAMPED "DOUGLAS CO RD DPT R-W"

0 30 60 120
 SCALE IN FEET
 HOR-LOCAL DATUM
 VERT-NAVD 29

Line Table: Alignments

Line #	Length	Direction	Start Point	End Point
L1	29.90	S50° 08' 00.18"E	7+00.00 PT (BP) 37832.65, 249133.09	7+29.90 PC 37813.48, 249156.04
L2	1109.48	S87° 55' 19.76"E	7+61.45 PT 37802.40, 249184.97	18+70.93 PC 37762.17, 250293.72
L3	331.40	S88° 25' 33.61"E	19+35.29 PT 37760.12, 250358.05	22+66.70 PC 37751.02, 250689.33
L4	699.68	S88° 17' 32.42"E	24+50.89 PT 37745.74, 250873.45	31+50.57 PC 37724.89, 251572.82
L5	27.83	S75° 48' 25.98"E	31+64.57 PT 37722.96, 251586.65	31+92.40 PC (EP) 37716.14, 251613.64

Curve Table: Alignments

Curve #	Radius	Length	Chord Direction	Start Point	End Point
C1	47.83	31.54	S69° 01' 39.97"E	7+29.90 PC (37813.48, 249156.04)	7+61.45 PT (37802.40, 249184.97)
C2	7319.71	64.37	S88° 10' 26.69"E	18+70.93 PC (37762.17, 250293.72)	19+35.29 PT (37760.12, 250358.05)
C3	78953.13	184.19	S88° 21' 33.01"E	22+66.70 PC (37751.02, 250689.33)	24+50.89 PT (37745.74, 250873.45)
C4	64.25	14.00	S82° 02' 59.20"E	31+50.57 PC (37724.89, 251572.82)	31+64.57 PT (37722.96, 251586.65)

REGISTERED
 PROFESSIONAL
 LAND SURVEYOR
Donald G. Beecroft Jr.
 OREGON
 JULY 25, 1981
 DONALD G. BEECROFT JR.
 2480
 EXPIRES 12-31-13

HASTINGSRW.DWG

REVISIONS	DESIGN	CHECK	REVIEW

DOUGLAS COUNTY
 DEPARTMENT OF PUBLIC WORKS
 RIGHT-OF-WAY FOR
 HASTINGS AVE
 TAYLOR ST. TO S. CALAPOOIA ST.
 ROBERT G. PAUL, PE, PLS. DIRECTOR
 OCT. 2012 SHEET 2 OF 4