

FILED

Date: 6/25/2001 By: JP  
This survey consists of: 3 Pgs.  
Map: SC09 2001-068  
Narrative: \_\_\_\_\_  
Corner Rpt: \_\_\_\_\_

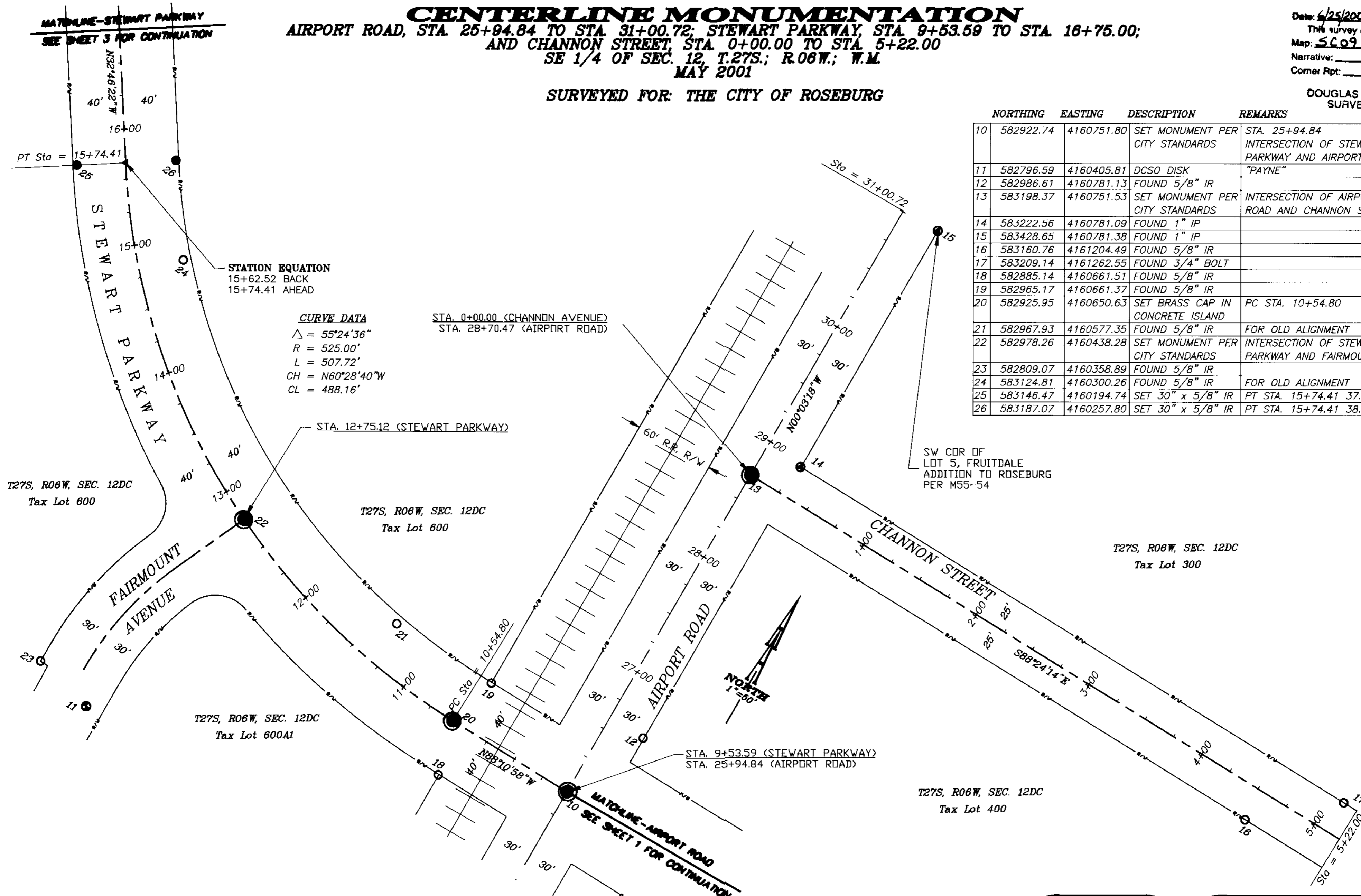
# CENTERLINE MONUMENTATION

AIRPORT ROAD, STA. 25+94.84 TO STA. 31+00.72; STEWART PARKWAY, STA. 9+53.59 TO STA. 16+75.00;  
AND CHANNON STREET, STA. 0+00.00 TO STA. 5+22.00  
SE 1/4 OF SEC. 12, T.27S.; R.06W.; W.M.  
MAY 2001

SURVEYED FOR: THE CITY OF ROSEBURG

DOUGLAS COUNTY  
SURVEYOR

	NORTHING	EASTING	DESCRIPTION	REMARKS
10	582922.74	4160751.80	SET MONUMENT PER CITY STANDARDS	STA. 25+94.84 INTERSECTION OF STEWART PARKWAY AND AIRPORT ROAD
11	582796.59	4160405.81	DCSO DISK	"PAYNE"
12	582986.61	4160781.13	FOUND 5/8" IR	
13	583198.37	4160751.53	SET MONUMENT PER CITY STANDARDS	INTERSECTION OF AIRPORT ROAD AND CHANNON STREET
14	583222.56	4160781.09	FOUND 1" IP	
15	583428.65	4160781.38	FOUND 1" IP	
16	583160.76	4161204.49	FOUND 5/8" IR	
17	583209.14	4161262.55	FOUND 3/4" BOLT	
18	582885.14	4160661.51	FOUND 5/8" IR	
19	582965.17	4160661.37	FOUND 5/8" IR	
20	582925.95	4160650.63	SET BRASS CAP IN CONCRETE ISLAND	PC STA. 10+54.80
21	582967.93	4160577.35	FOUND 5/8" IR	FOR OLD ALIGNMENT
22	582978.26	4160438.28	SET MONUMENT PER CITY STANDARDS	INTERSECTION OF STEWART PARKWAY AND FAIRMOUNT AV.
23	582809.07	4160358.89	FOUND 5/8" IR	
24	583124.81	4160300.26	FOUND 5/8" IR	FOR OLD ALIGNMENT
25	583146.47	4160194.74	SET 30" x 5/8" IR	PT STA. 15+74.41 37.00' L
26	583187.07	4160257.80	SET 30" x 5/8" IR	PT STA. 15+74.41 38.00' R



- LEGEND:**
- SET 5/8" x 30" IRON ROD WITH YELLOW PLASTIC CAP MARKED "AA SURVEYING INC."
  - SET STREET MONUMENT PER CITY STANDARDS (1-1/2" IRON ROD WITH BRASS CAP, ALL WITHIN MONUMENT BOX)
  - ▲ SET PK NAIL
  - FOUND MONUMENT (DESCRIPTION IN COORDINATE LIST)
  - CONTROL MONUMENT

REGISTERED  
PROFESSIONAL  
LAND SURVEYOR

*Ronald A. Quimby*

OREGON  
JULY 14, 1978  
RONALD A. QUIMBY  
1654  
EXP. DATE: 12-31-02

**AA**

**SURVEYING & ENGINEERING, INC.**  
ENGINEERING • SURVEYING • PLANNING

3076 NE DIAMOND LAKE BLVD.  
ROSEBURG, OREGON 97470  
TEL (541)672-2096  
FAX (541)672-0611