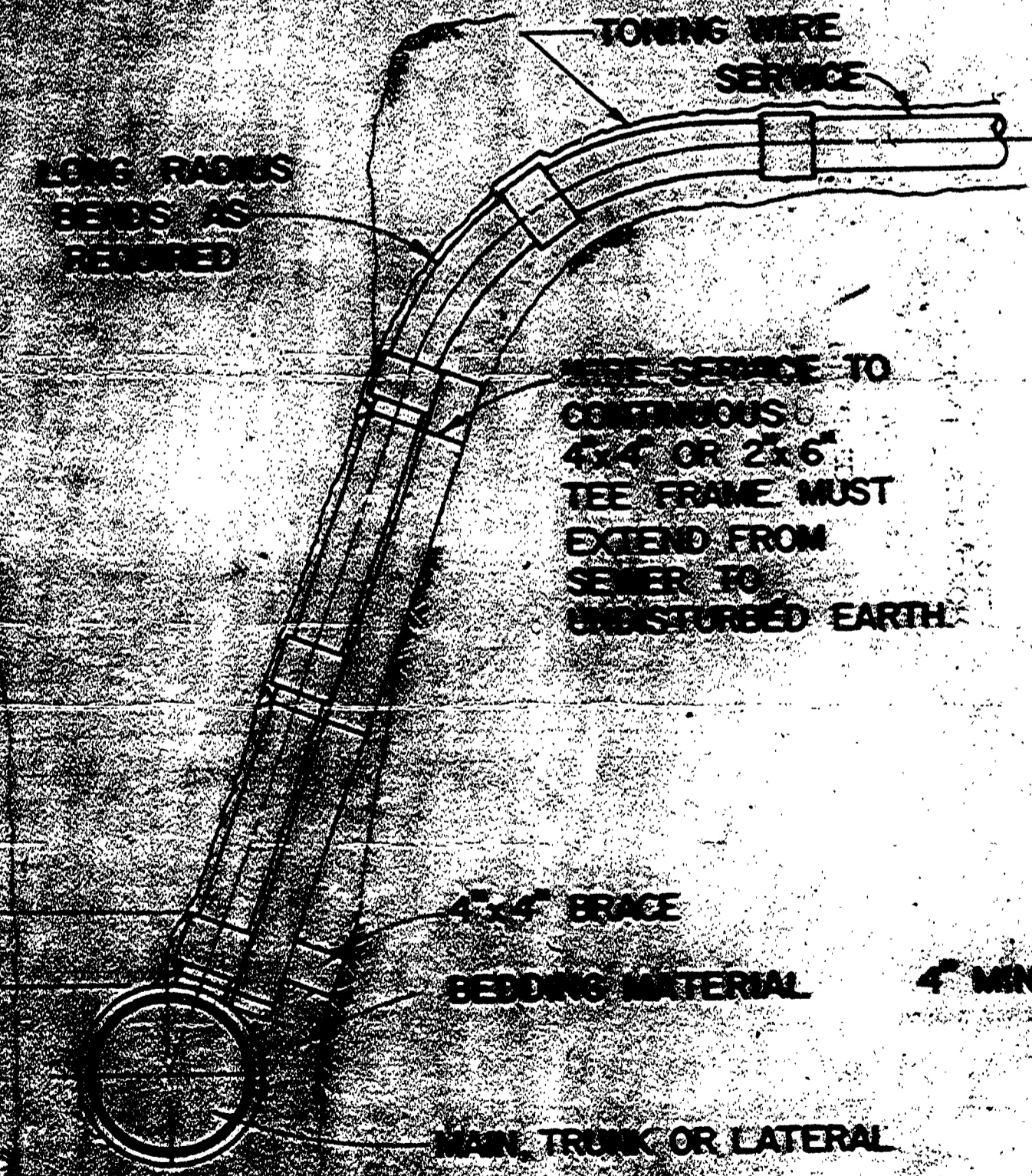
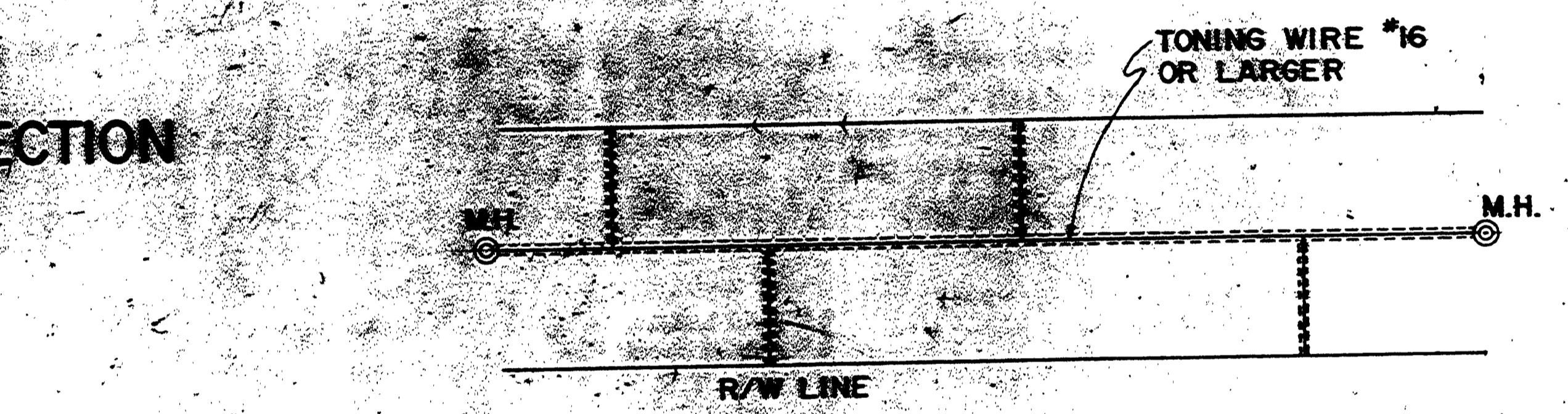


SECTION STANDARD SERVICE CONNECTION

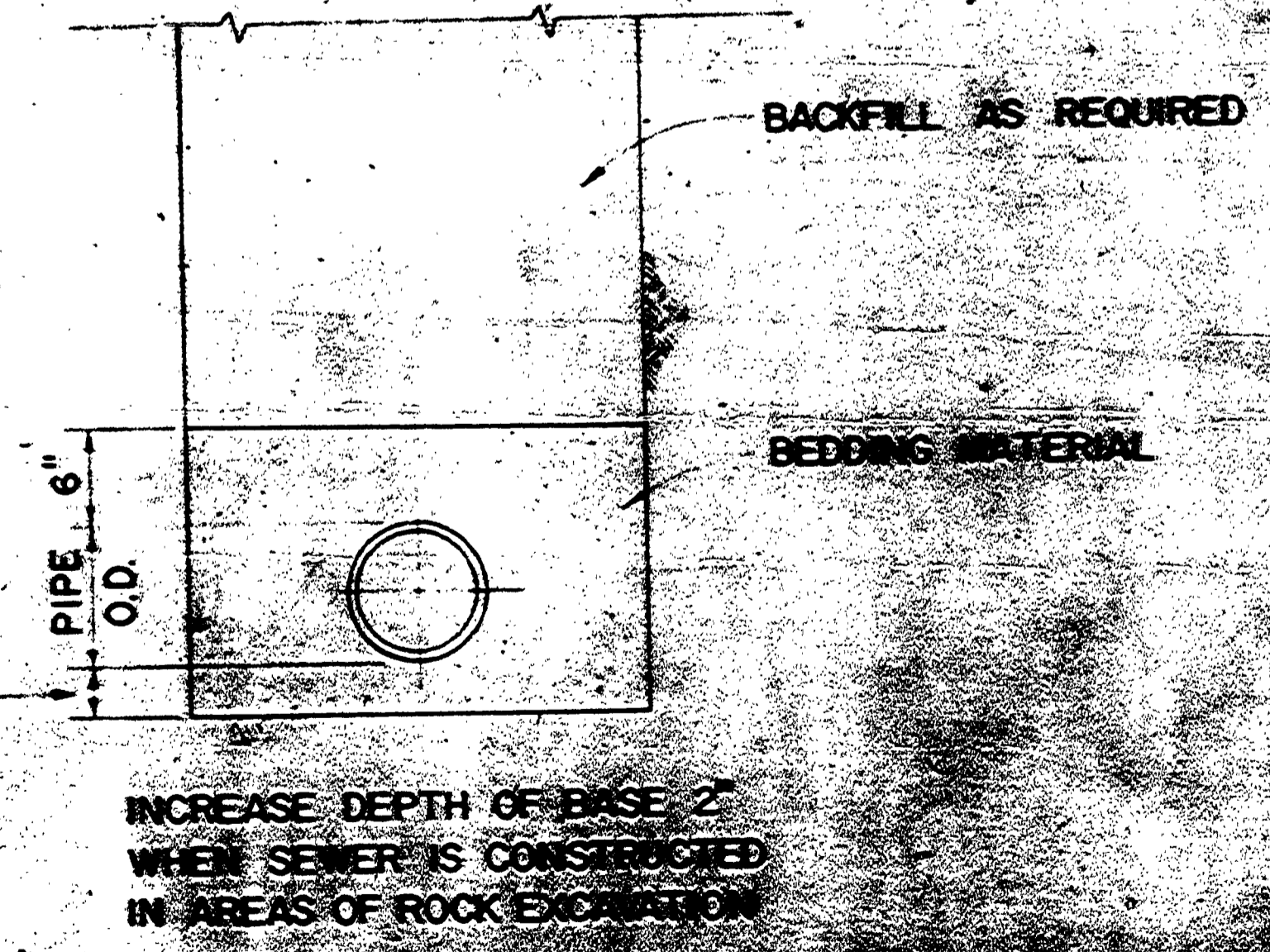


DEEP TRENCH SERVICE CONNECTION

NOTE: IN ALL CASES WHERE SERVICE IS SUPPORTED BY FULL LENGTH ON THESE TRENCHES OVER 2' DEEP TO FLOW LINE

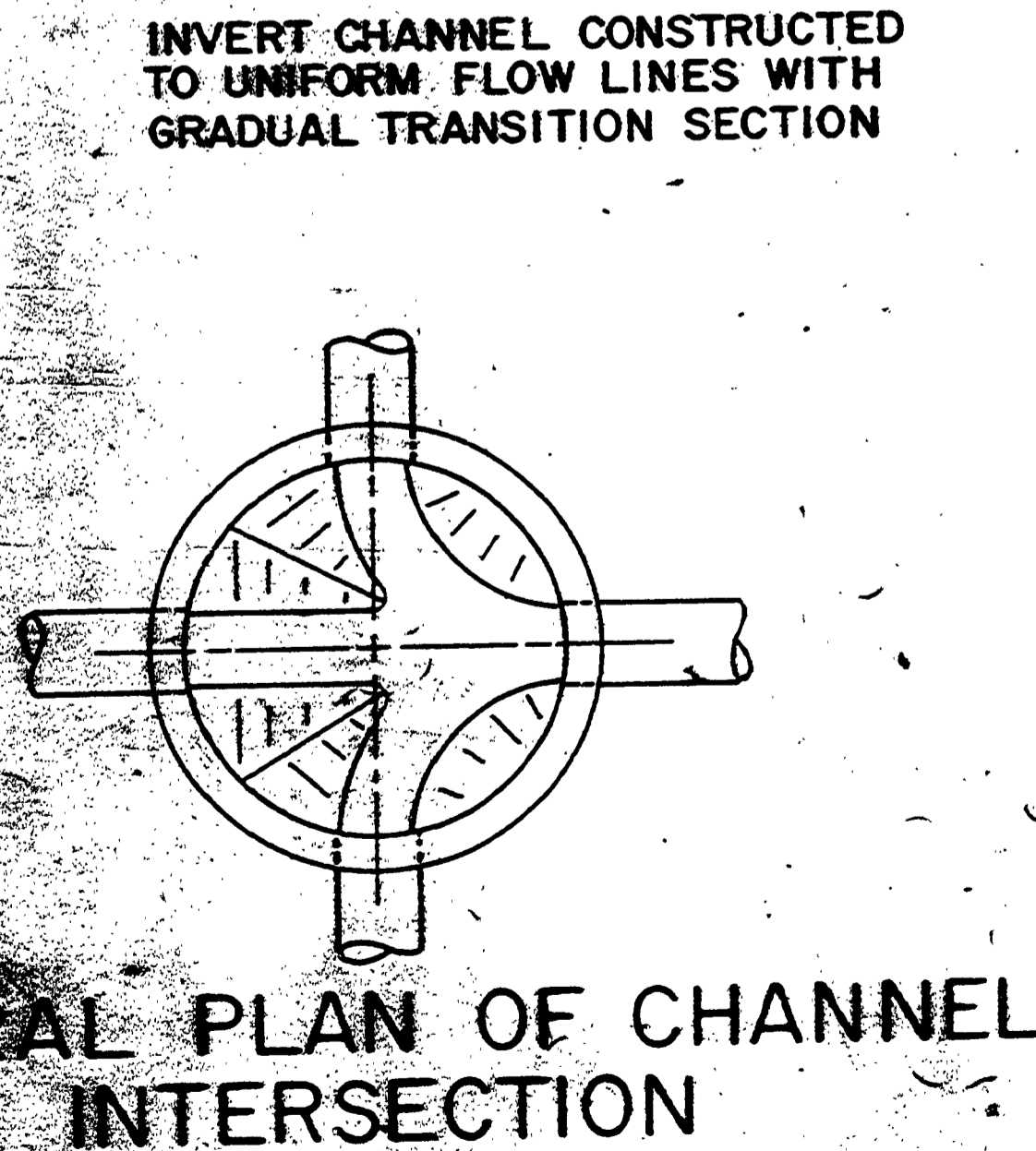


TYPICAL TONING WIRE INSTALLATION

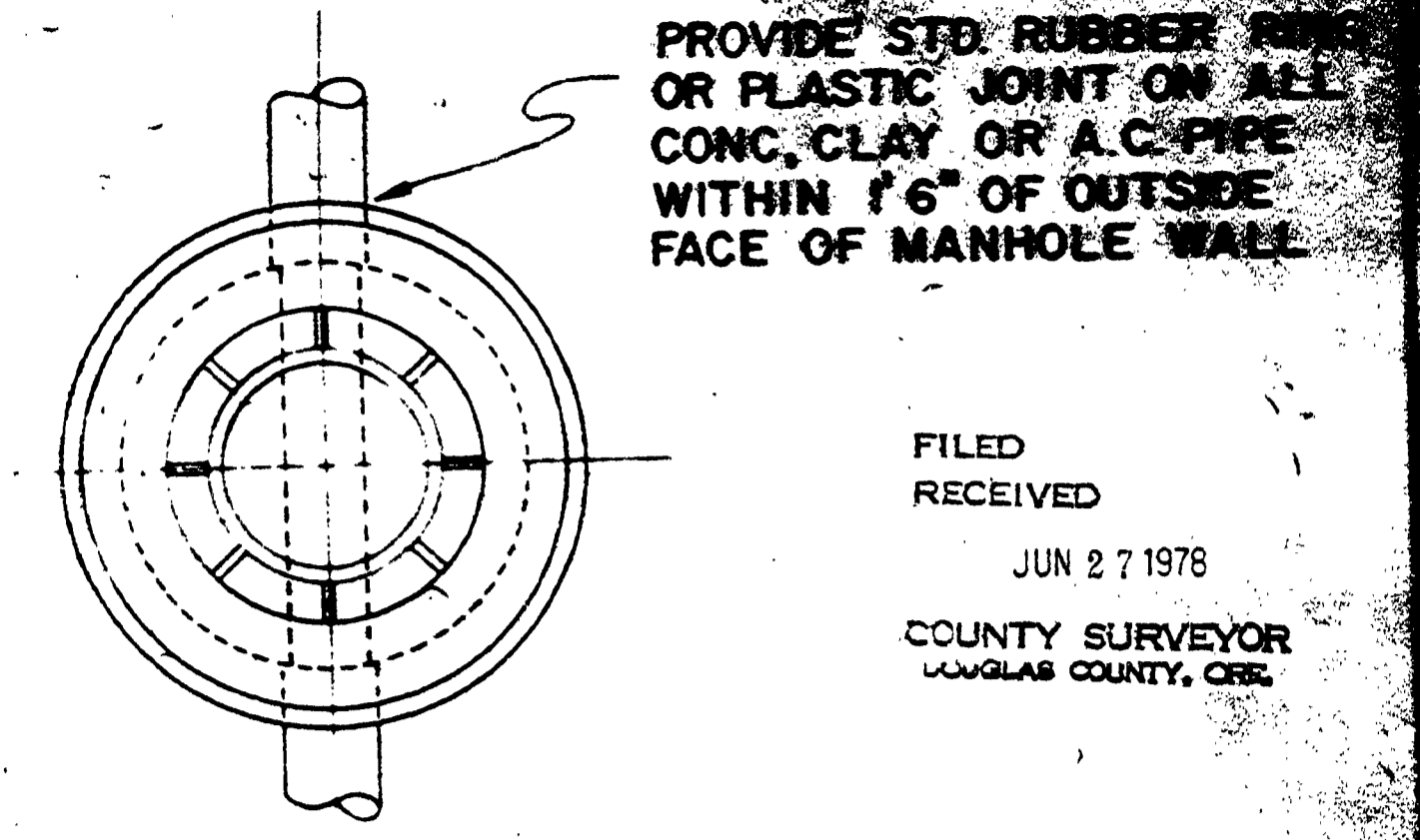
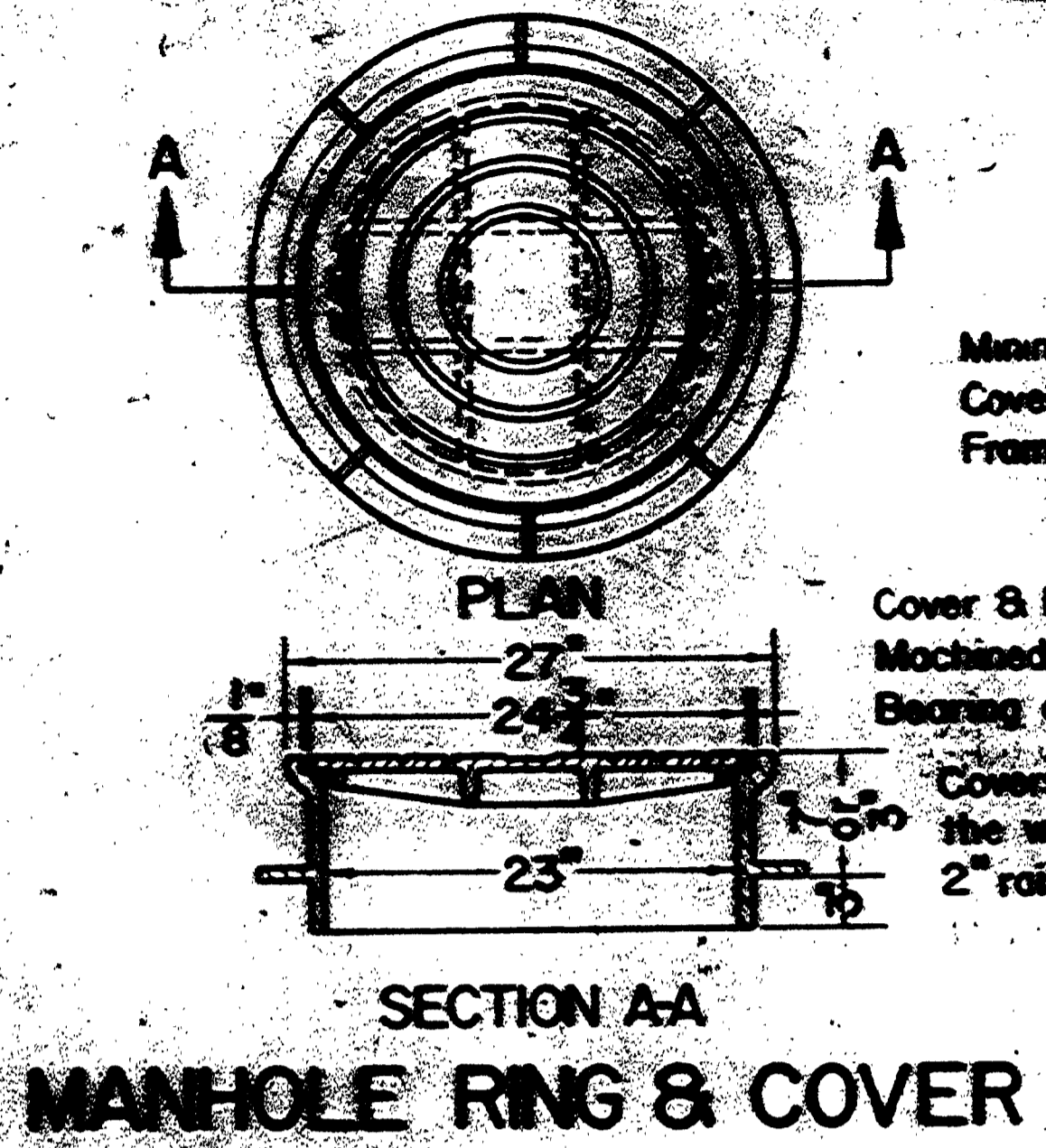


PIPE ZONE BACKFILL

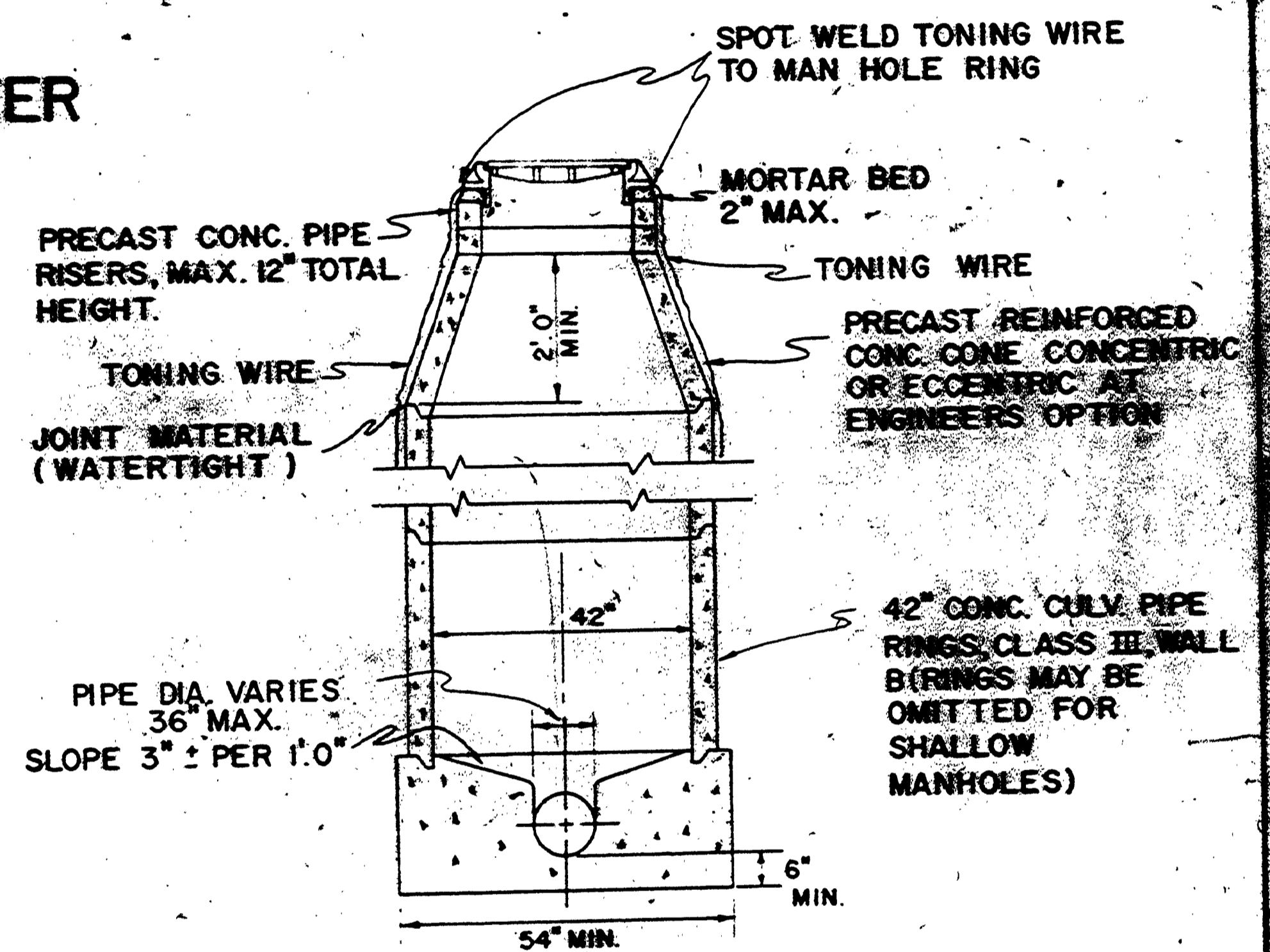
INCREASE DEPTH OF BASE 2' WHEN SEWER IS CONSTRUCTED IN AREAS OF ROCK EXCAVATION



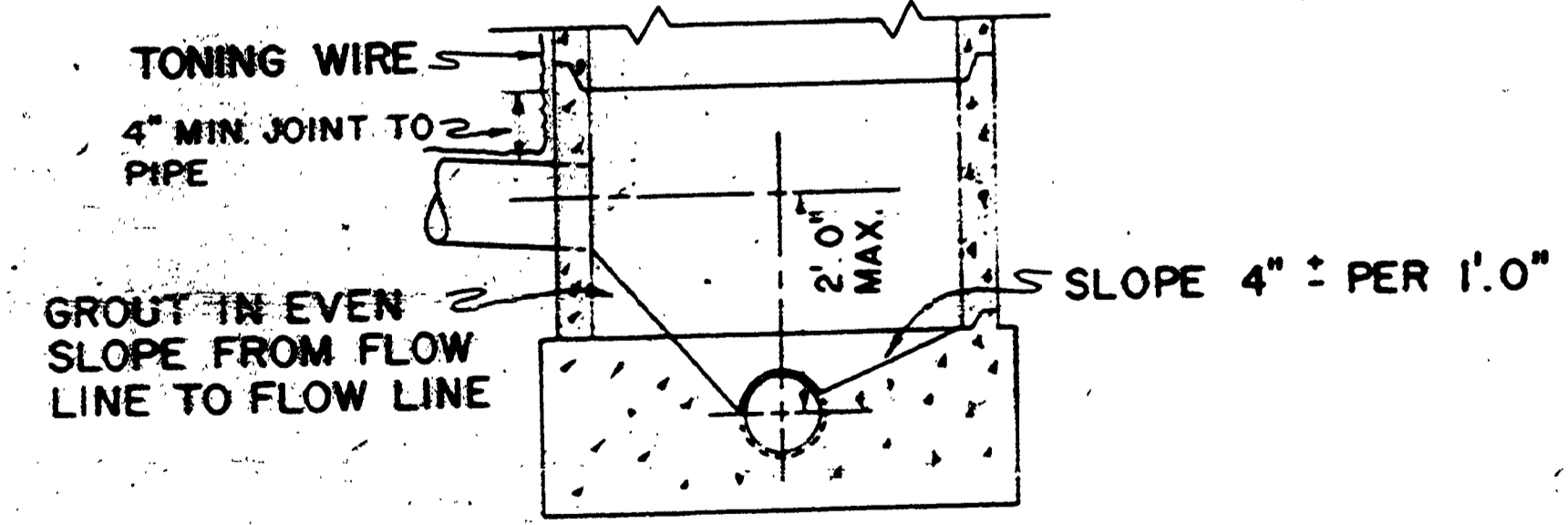
GENERAL PLAN OF CHANNEL INTERSECTION



FILED RECEIVED JUN 27 1978 COUNTY SURVEYOR DOUGLAS COUNTY, CO.



MANHOLE TYPE A



TYPICAL MANHOLE HAVING FALL LESS THAN 2'0"

AS CONSTRUCTED 6-7-78. R.O. 7 DOUGLAS COUNTY PUBLIC WORKS DEPARTMENT CANTERBURY ESTATES SUBDIV 1976 SEE 7 GEORGE E. GRUBB, DIRECTOR