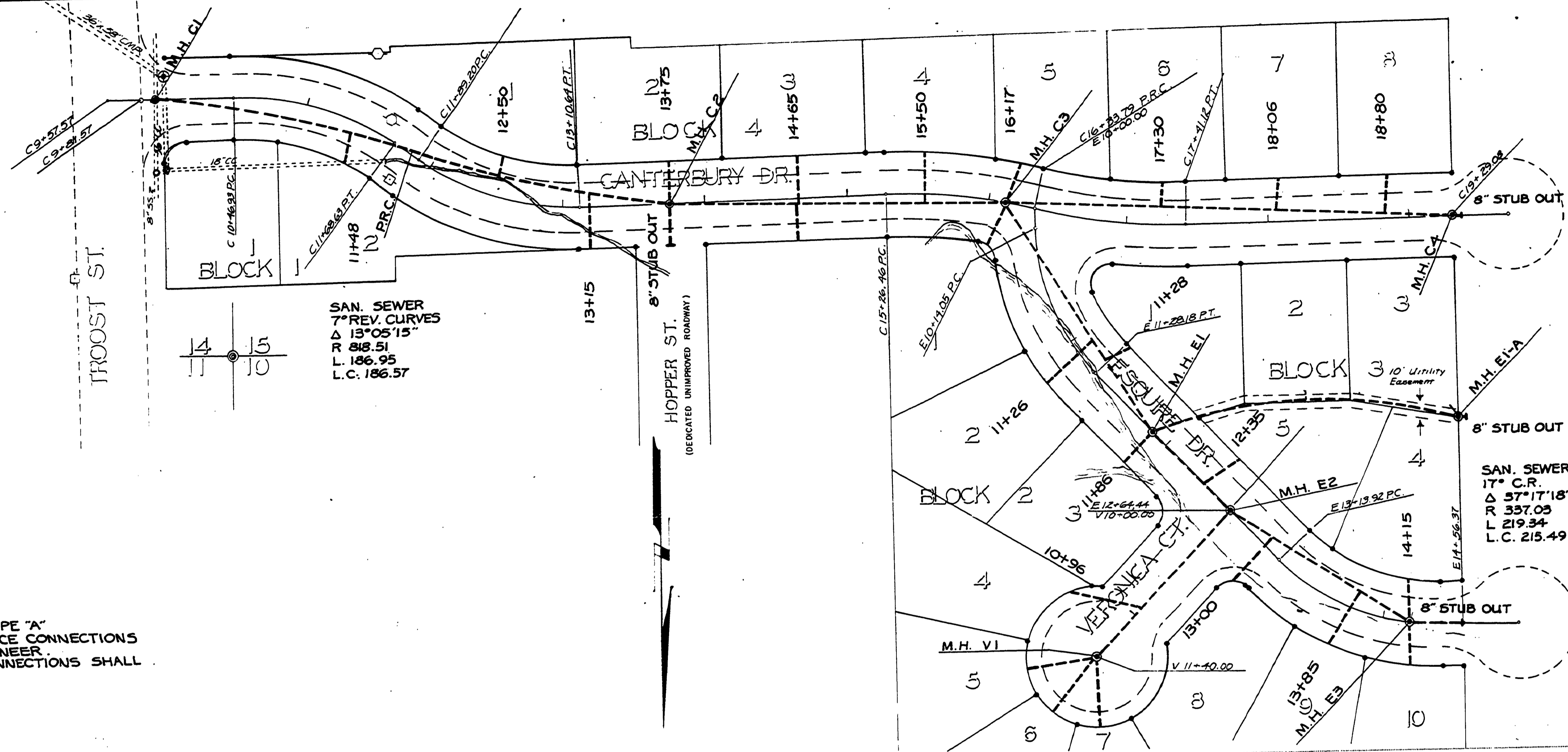


S10, 14, & 15, T27S, R6W, W.M.

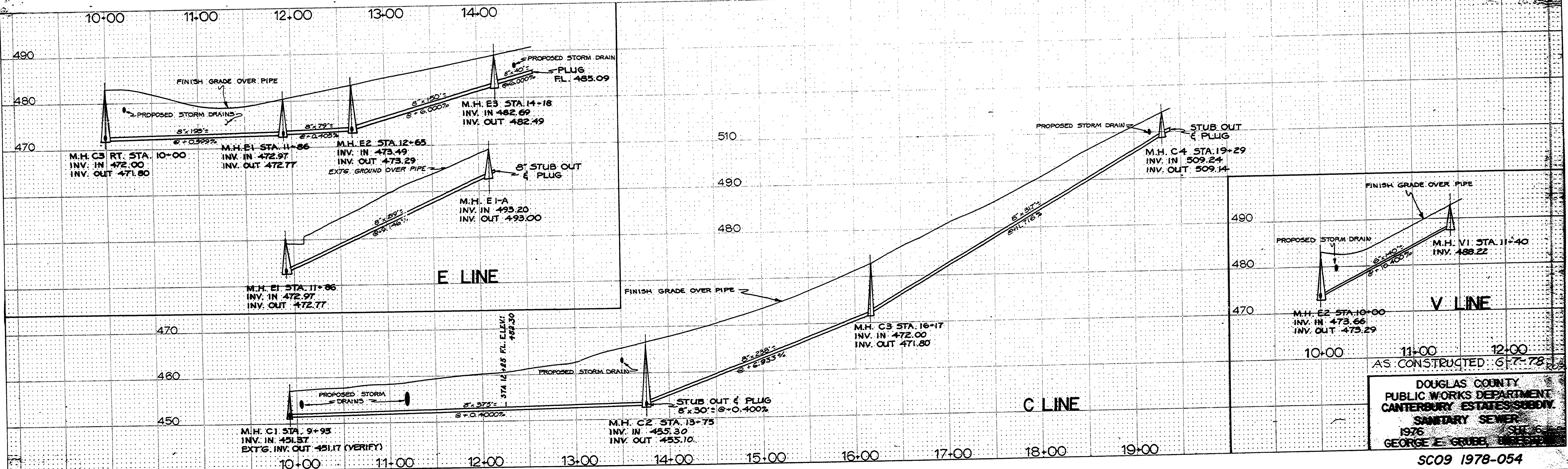
FILED  
RECEIVED  
JUN 27 1978  
COUNTY SURVEYOR  
LANE COUNTY, ORE.  
RECEIVED



SAN. SEWER  
7° REV. CURVES  
Δ 13°05'15"  
R 318.51  
L 186.95  
L.C. 186.57

SAN. SEWER  
17° C.R.  
Δ 37°17'18"  
R 357.05  
L 219.34  
L.C. 215.49

NOTE:  
1. ALL MANHOLES STANDARD TYPE "A"  
2. INSTALL 26 STANDARD SERVICE CONNECTIONS  
AS DIRECTED BY THE ENGINEER.  
3. ALL STANDARD SERVICE CONNECTIONS SHALL  
BE 4" I.D..



AS CONSTRUCTED: 6-7-78

DOUGLAS COUNTY  
PUBLIC WORKS DEPARTMENT  
CANTERBURY ESTATES SUBDY.  
SANITARY SEWER  
1976  
GEORGE E. GRUBB, ENGINEER