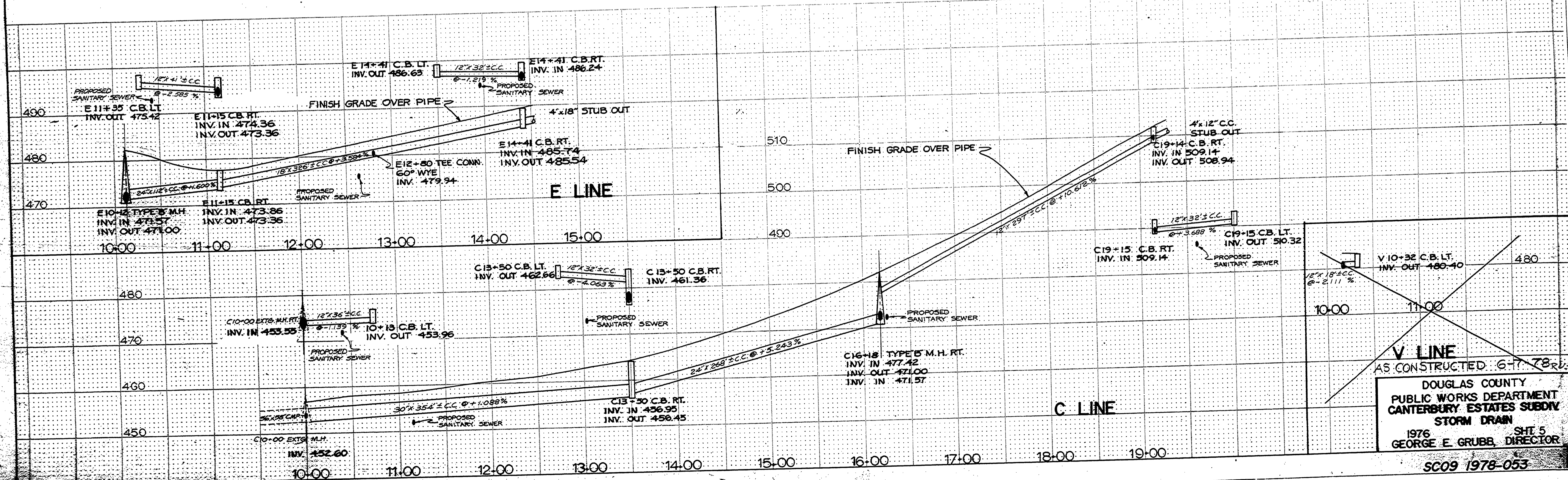
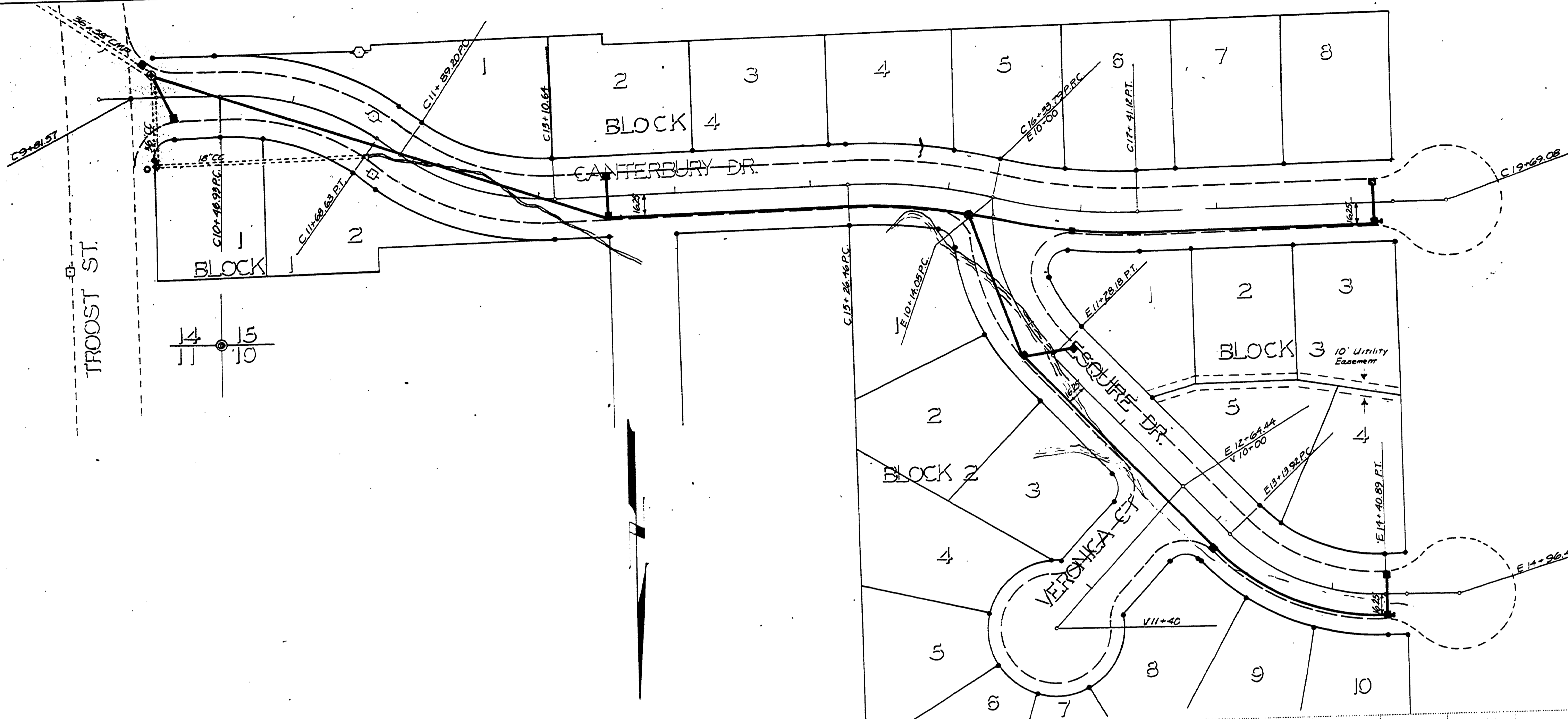


S10, 14, & 15, T27S, R6W, W.M.

SC09 1978-053

FILED
RECEIVED
JUN 27 1978
COUNTY SURVEYOR
DOUGLAS COUNTY, ORE.



DOUGLAS COUNTY
PUBLIC WORKS DEPARTMENT
CANTERBURY ESTATES SUBDIV
STORM DRAIN
1976
GEORGE E. GRUBB, DIRECTOR
SHT 5
SC09 1978-053