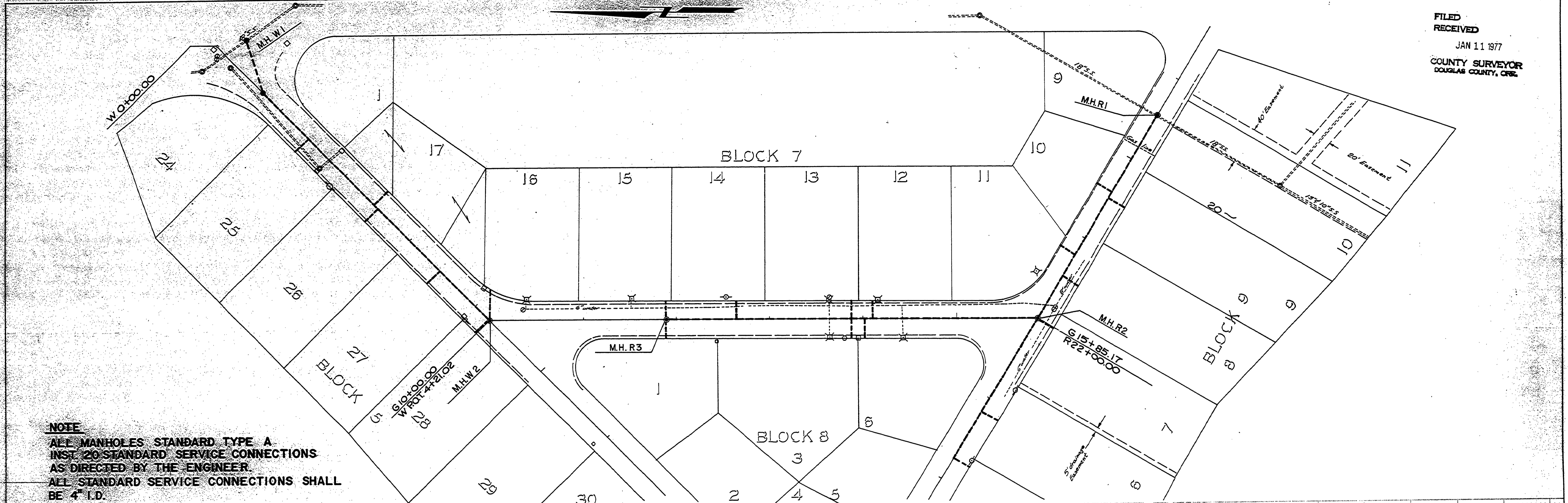
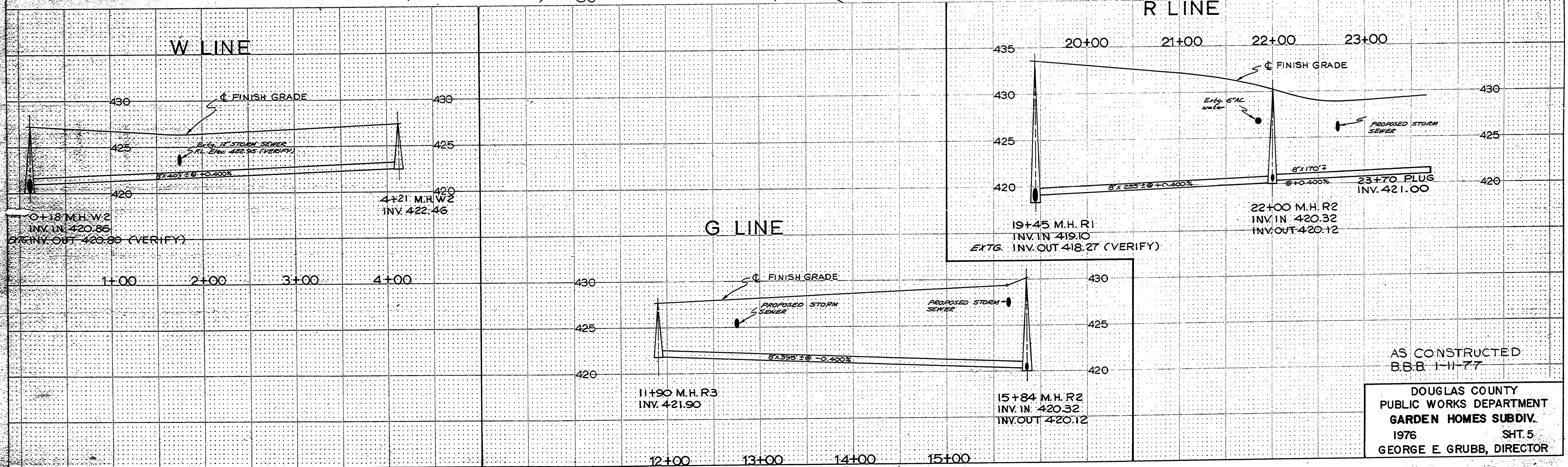


FILED
RECEIVED
JAN 11 1977
COUNTY SURVEYOR
DOUGLAS COUNTY, ORE.



NOTE
 ALL MANHOLES STANDARD TYPE A
 INST. 20 STANDARD SERVICE CONNECTIONS
 AS DIRECTED BY THE ENGINEER.
 ALL STANDARD SERVICE CONNECTIONS SHALL
 BE 4" I.D.



AS CONSTRUCTED
 B.B.B 1-11-77
 DOUGLAS COUNTY
 PUBLIC WORKS DEPARTMENT
 GARDEN HOMES SUBDIV.
 1976 SHT. 5
 GEORGE E. GRUBB, DIRECTOR