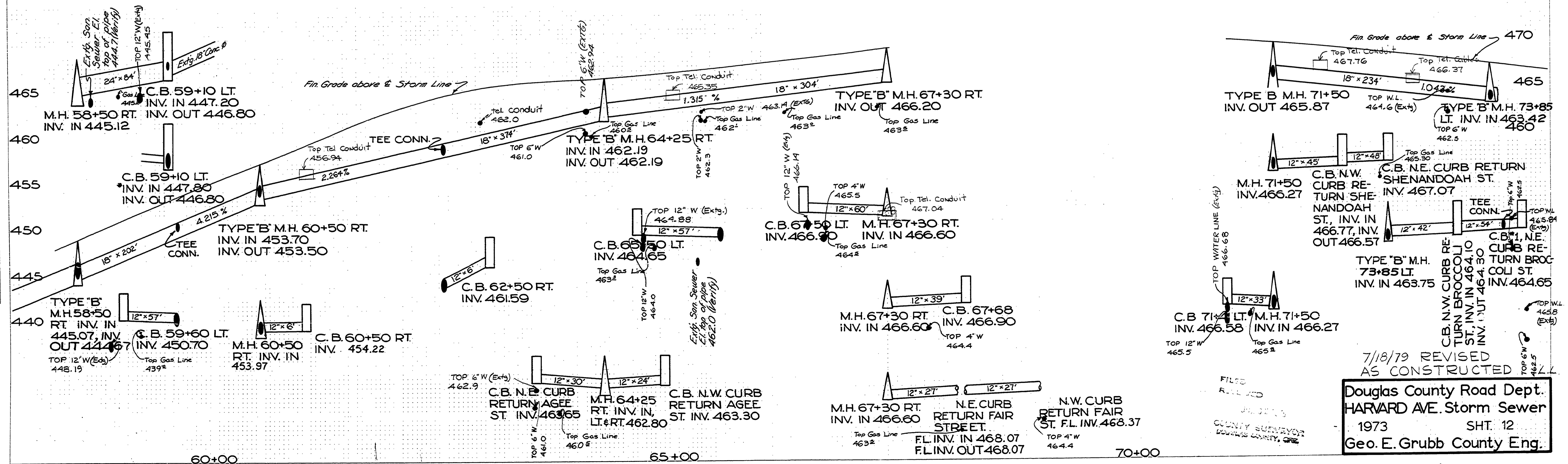
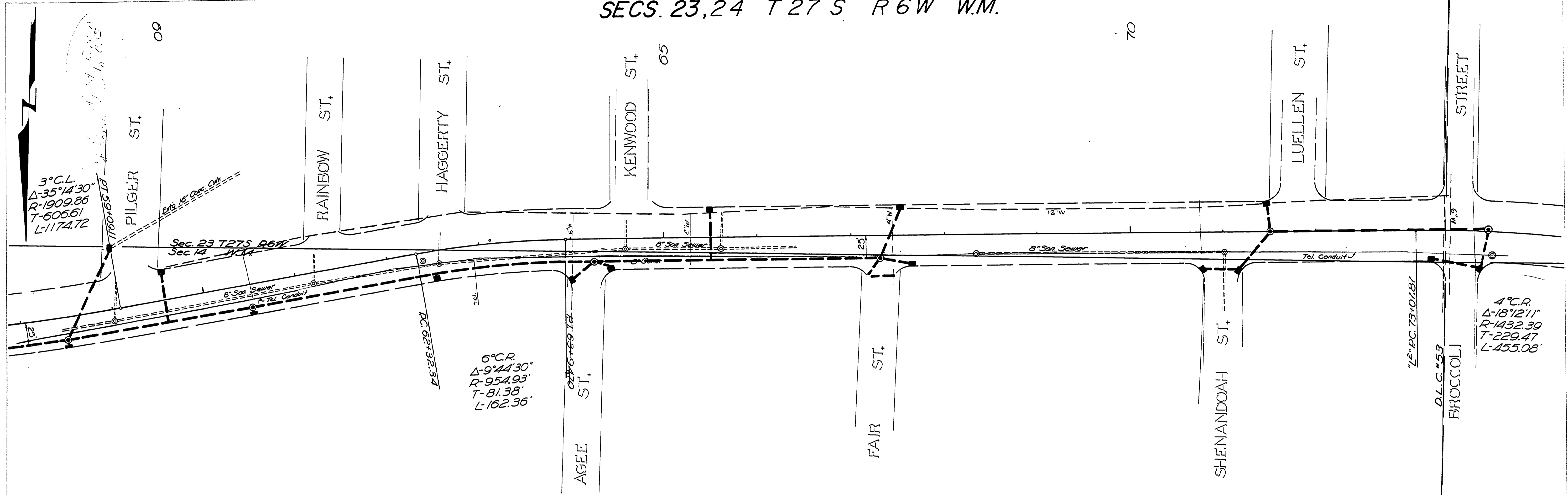


SECS. 23, 24 T 27 S R 6 W W.M.

70

DATE	
BY	
REVISIONS	
NO.	
NOTE BOOK	
RT. OF WAY CHECKED	
NO.	
PLAN	

DATE	
BY	
REVISIONS	
NO.	
NOTE BOOK	
STRUCTURE NOTATIONS CHFD	
PROFILE	



7/18/79 REVISED
AS CONSTRUCTED

FILED
RECORDED

Douglas County Road Dept.
HARVARD AVE. Storm Sewer
1973 SHT. 12
Geo. E. Grubb County Eng.