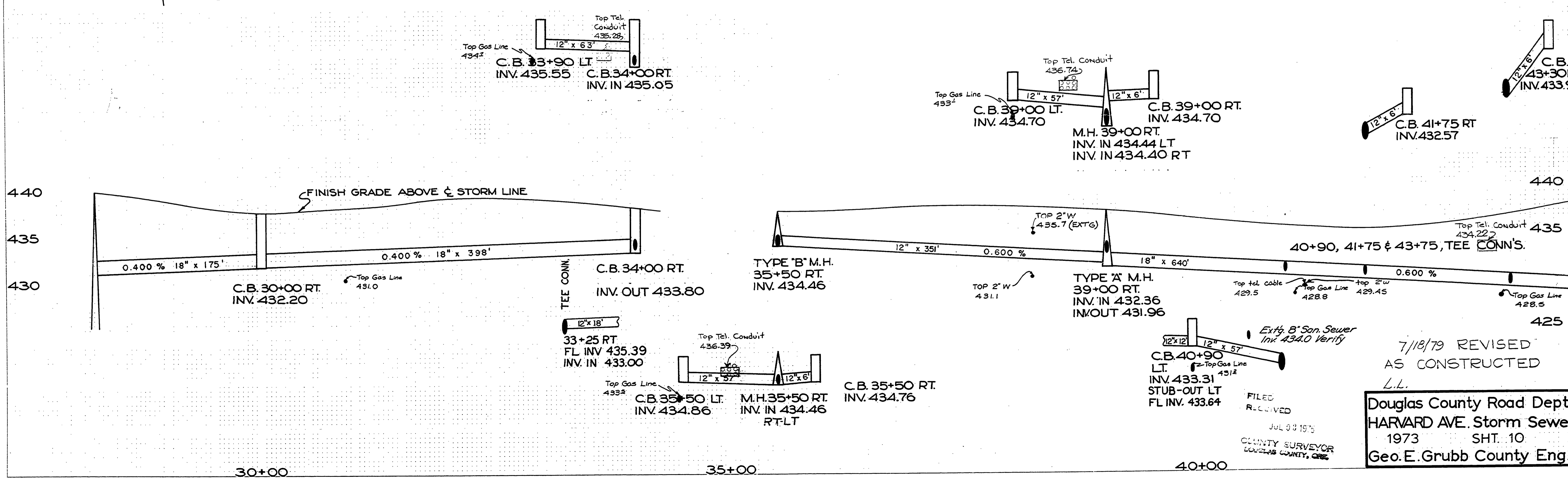
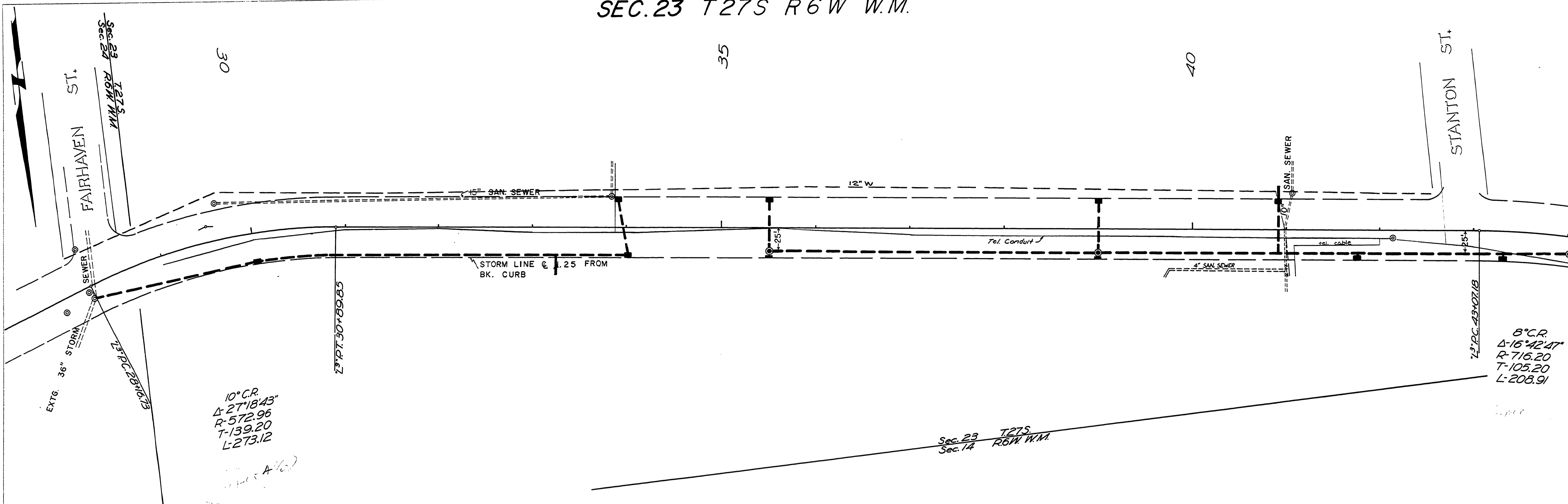


SEC. 23 T27S R6W W.M.

PLAN	DATE
BY	
NO.	
NOTE BOOK	
NO.	
DATE	
BY	
NO.	
NOTE BOOK	
NO.	

PROFILE	DATE
BY	
NO.	
NOTE BOOK	
NO.	
DATE	
BY	
NO.	
NOTE BOOK	
NO.	



7/18/79 REVISED  
AS CONSTRUCTED  
L.L.

FILED  
RECEIVED  
JUL 23 1979  
COUNTY SURVEYOR  
DOUGLAS COUNTY, OREG.

Douglas County Road Dept.  
HARVARD AVE. Storm Sewer  
1973 SH. 10  
Geo. E. Grubb County Eng.