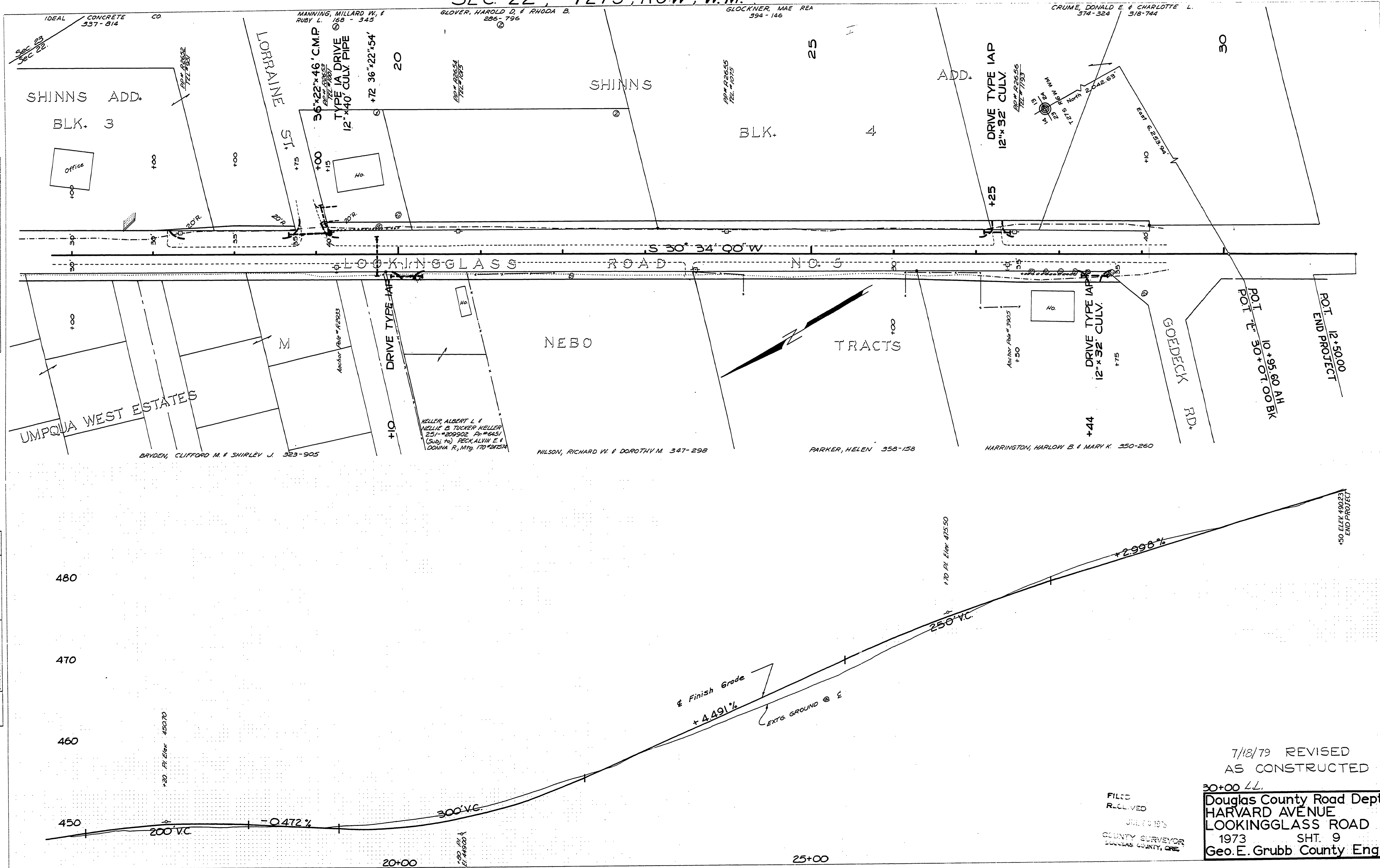


SEC. 22, T27S, R6W, W.M.

PLAN	DATE
SURVEYED	
ALIGNED	
CHECKED	
BY	
NO.	

PROFILE	DATE
SURVEYED	
COLLECTED	
CHECKED	
BY	
NO.	



7/18/79 REVISED  
AS CONSTRUCTED

30+00 LL.  
 Douglas County Road Dept.  
 HARVARD AVENUE  
 LOOKINGGLASS ROAD  
 1973 SHT. 9  
 Geo. E. Grubb County Eng.

FILED  
 RECEIVED  
 JUL 18 1979  
 COUNTY SURVEYOR  
 DOUGLAS COUNTY, ORE