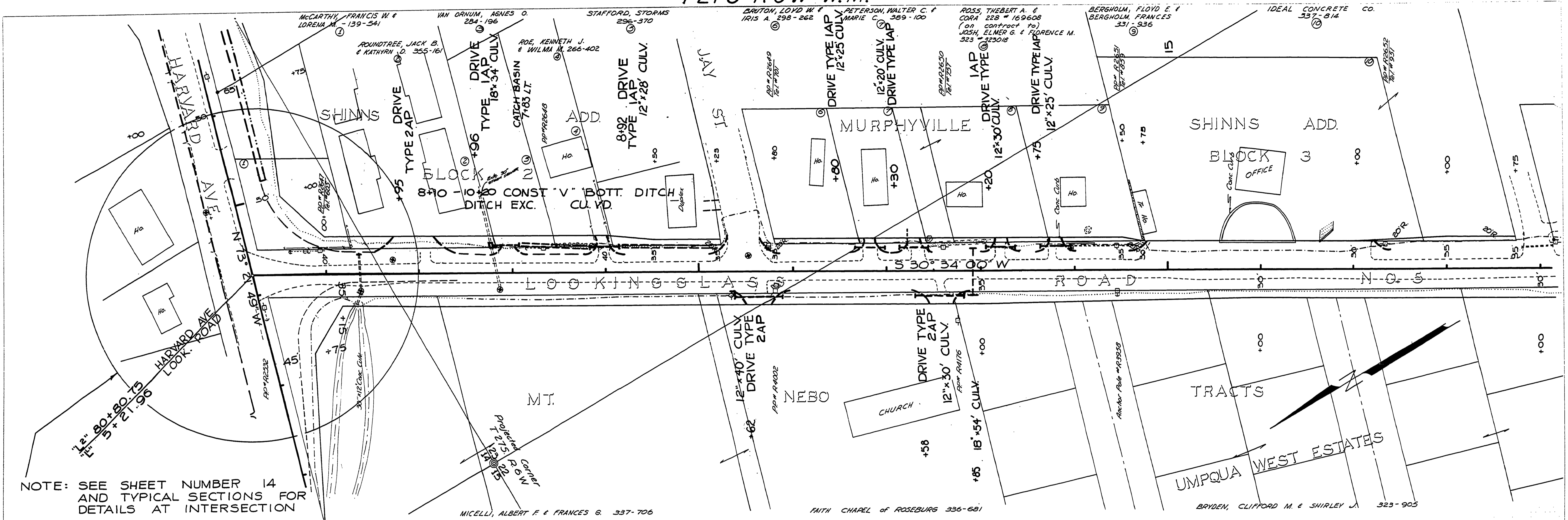


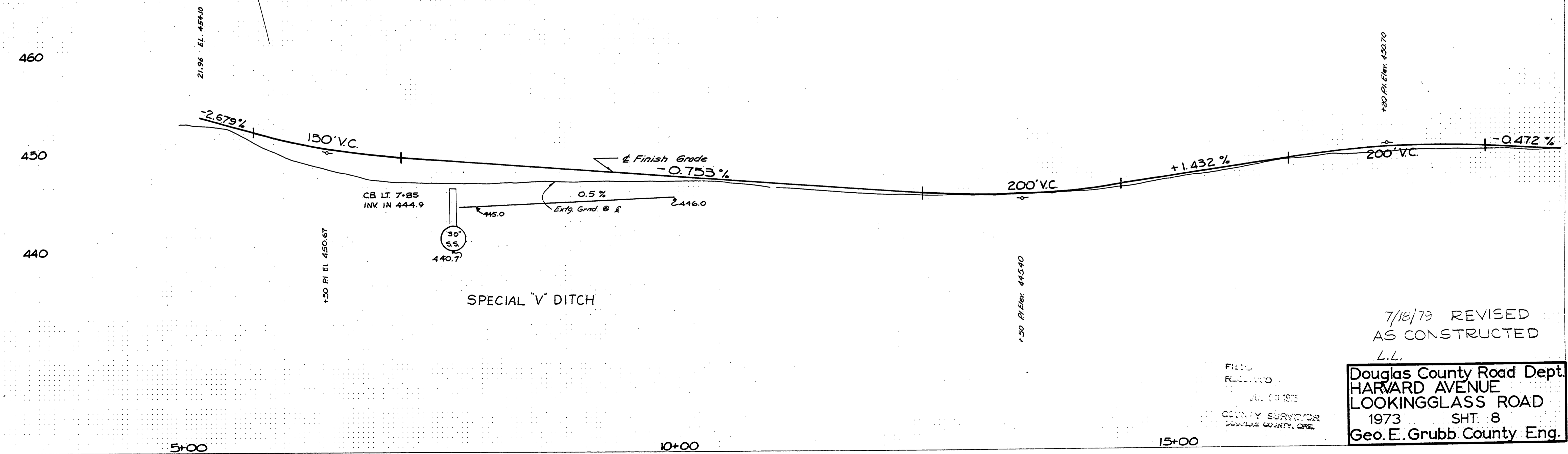
T27S R6W W.M.

PLAN	SURVEYED	DATE
NOTE BOOK	ALIGNED CHECKED	
	RT. OF WAY CHECKED	

PROFILE	SURVEYED	DATE
NOTE BOOK	GRADES CHECKED	
	3" MAX. NOTED	
	STRUCTURE NOTATIONS CHECKED	



NOTE: SEE SHEET NUMBER 14 AND TYPICAL SECTIONS FOR DETAILS AT INTERSECTION



7/16/73 REVISED AS CONSTRUCTED
L.L.
Douglas County Road Dept.
HARVARD AVENUE
LOOKINGGLASS ROAD
1973 SHT. 8
Geo. E. Grubb County Eng.