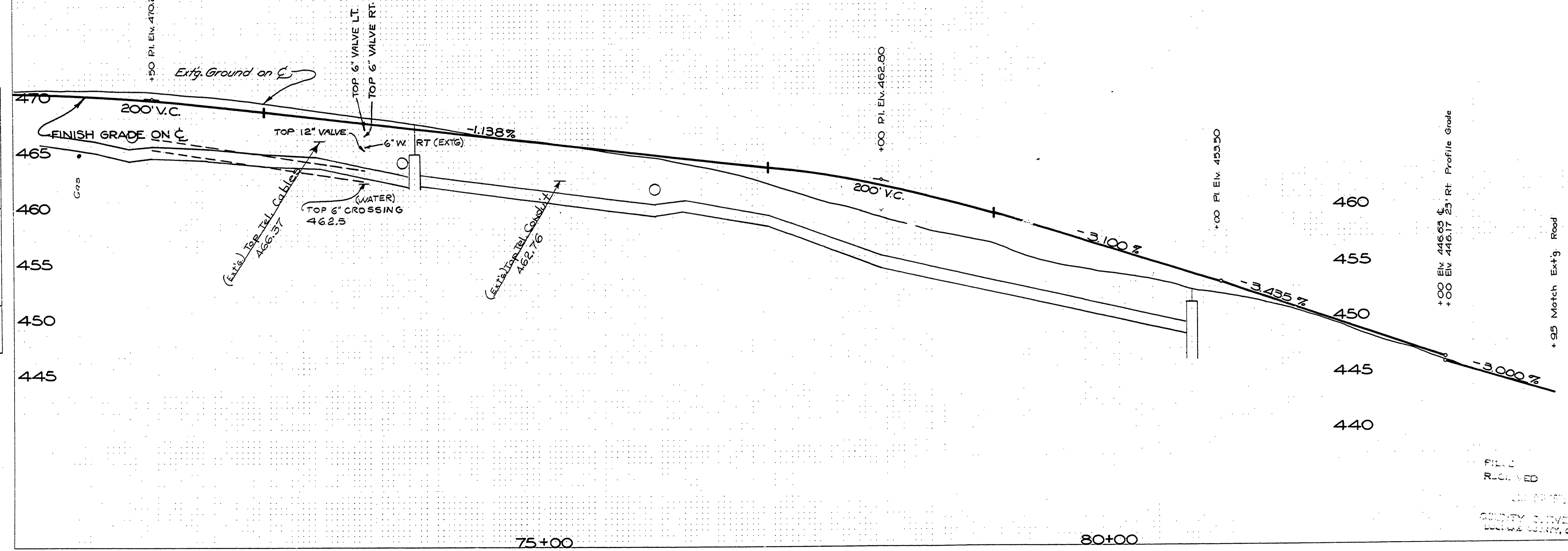
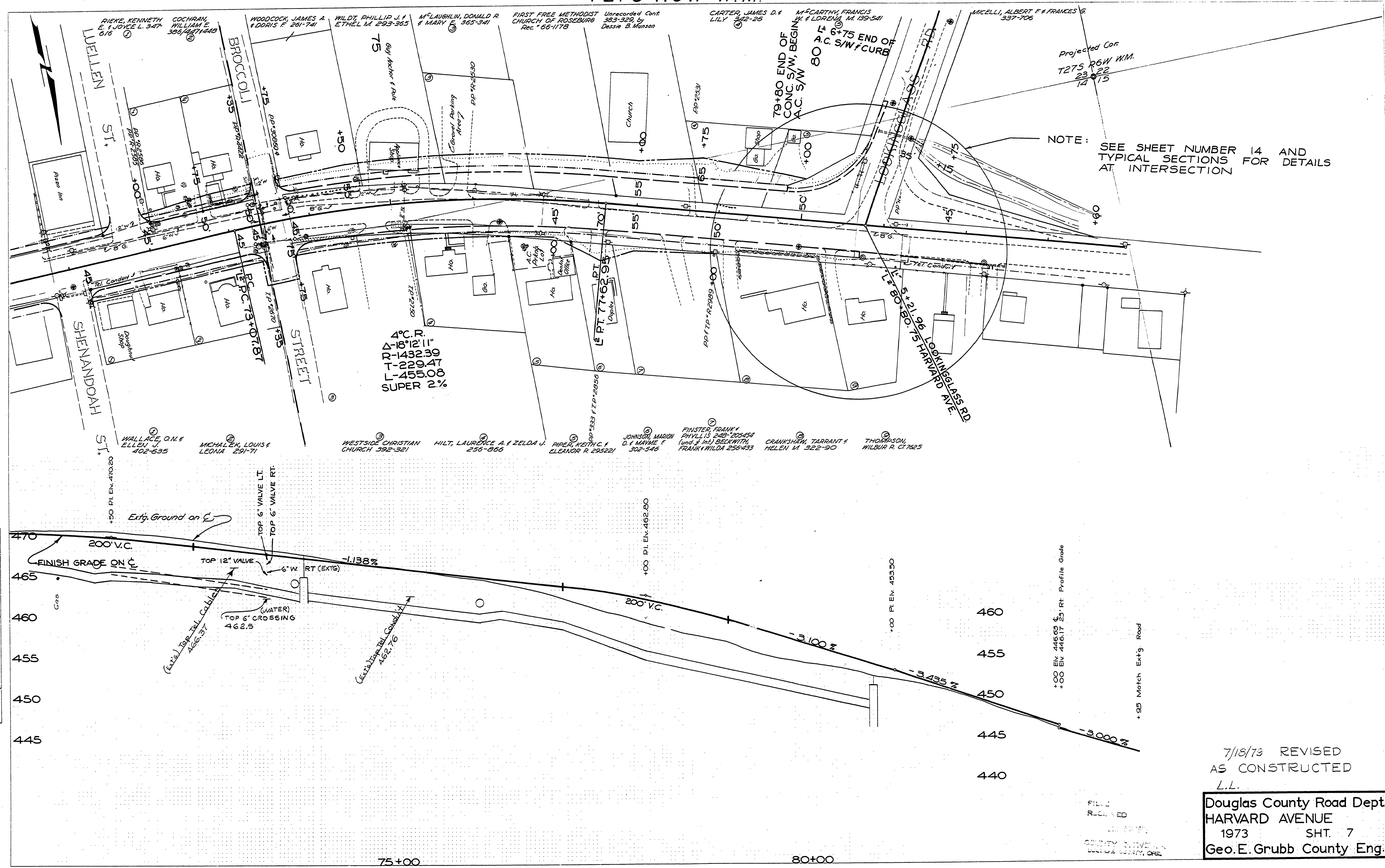


T27S R6W W.M.

SC09 1975-037
SEE SHEET - 043 FOR STORM SEWER PLAN

PLAN	BY	DATE
SURVEYED NOTE BOOK NO.		
ALIGNED CHECKED		
AS NOTED		
RT OF WAY CHECKED		

PROFILE	BY	DATE
SURVEYED NOTE BOOK NO.		
PLOTTED CHECKED		
AS NOTED		
STRUCTURE NOTAS (NS CH'D)		



7/18/73 REVISED
AS CONSTRUCTED
L.L.

Douglas County Road Dept.
HARVARD AVENUE
1973 SHT. 7
Geo. E. Grubb County Eng.