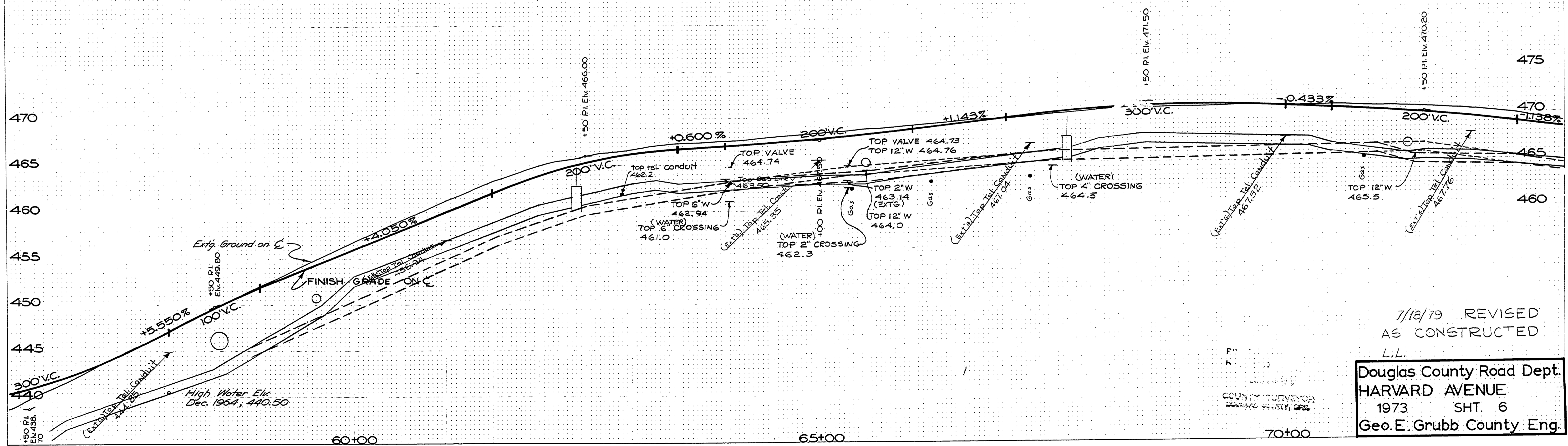
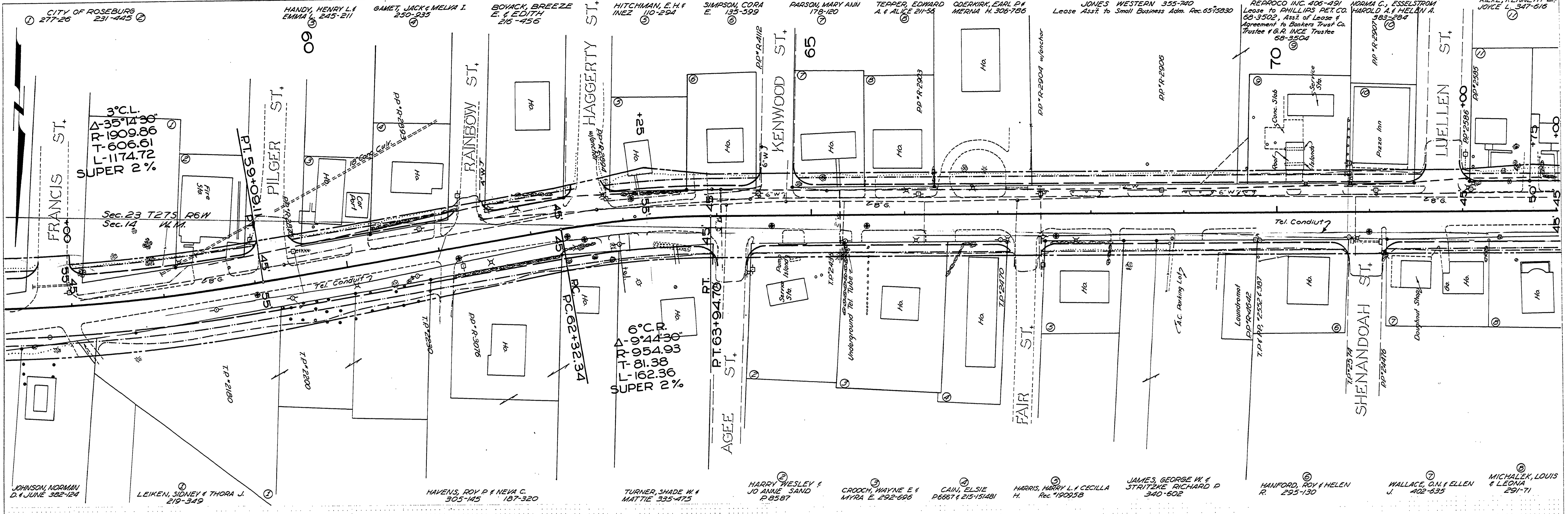


SECS. 23, 14 T27S R6W W.M.

PLAN	DATE	BY
SUBMITTED		
APPROVED		
NOTE BOOK NO.		

PROFILE	DATE	BY
SURVEYED		
GRADES CHECKED		
STRUCTURE NOTATIONS CHKD		
NOTE BOOK NO.		



7/18/79 REVISED
 AS CONSTRUCTED
 L.L.
 Douglas County Road Dept.
 HARVARD AVENUE
 1973 SHT. 6
 Geo. E. Grubb County Eng.