

SEC. 23 T 27S R 6W W.M.

STA. 28+50 TO STA. 79+80
TYPE 'B' CONC. CURB
& CONC. SIDEWALK

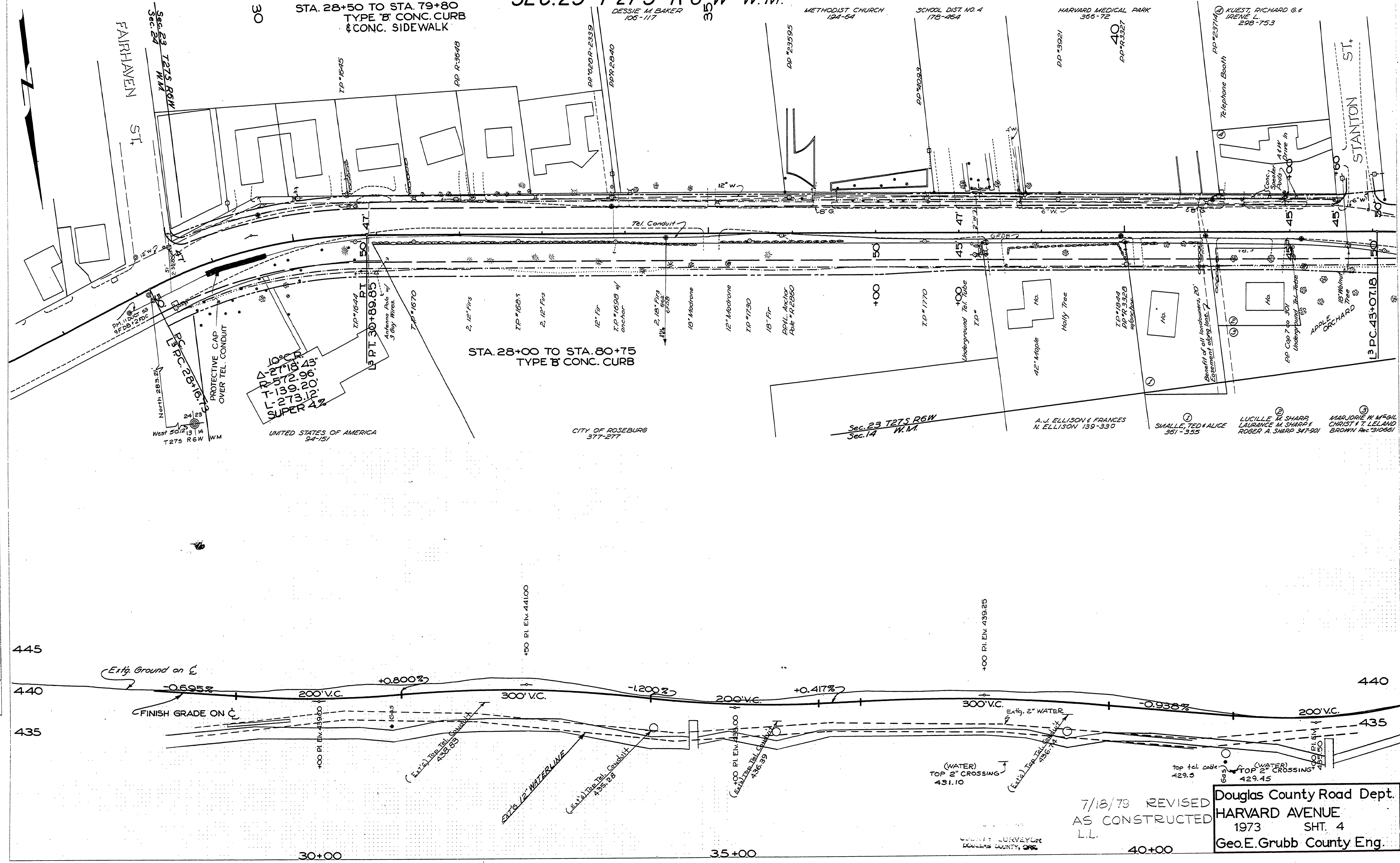
STA. 28+00 TO STA. 80+75
TYPE 'B' CONC. CURB

FARHAMEN ST

STANTON ST

PLAN	DATE
BY	
CHECKED	
NO. OF WAY CHECKED	
NO.	

PROFILE	DATE
BY	
CHECKED	
NO. OF WAY CHECKED	
NO.	



7/18/79 REVISED
AS CONSTRUCTED
L.L.

Douglas County Road Dept.
HARVARD AVENUE
1973 SHT. 4
Geo.E.Grubb County Eng.