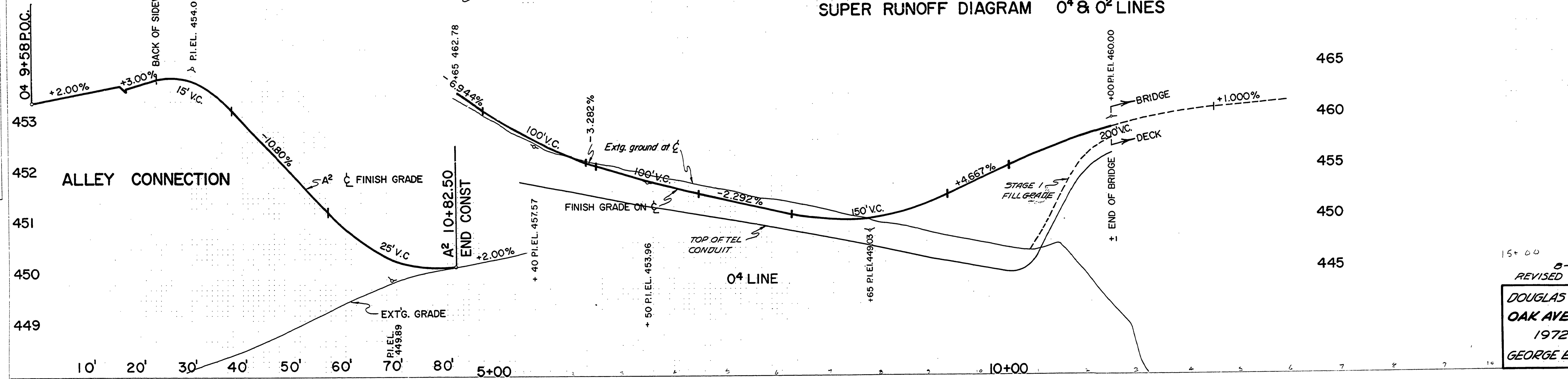
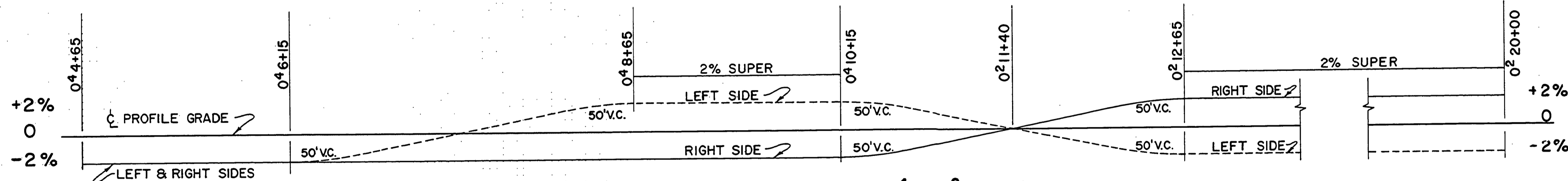
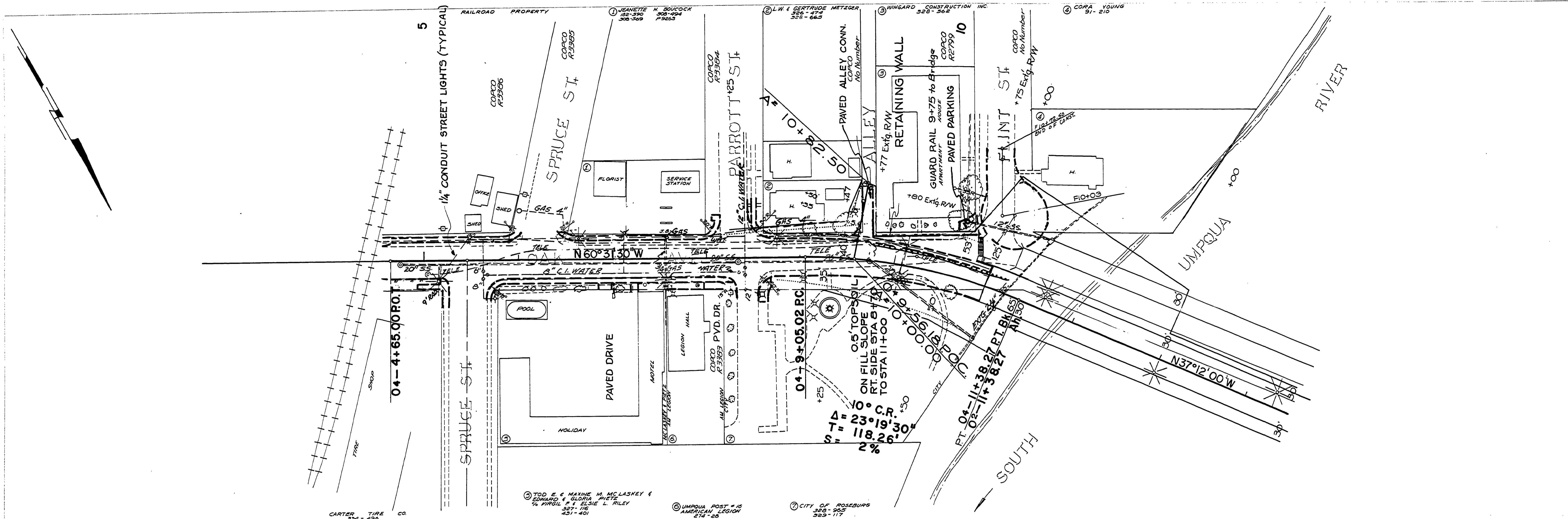


PLAN	DATE
NO.	
REVISIONS	
1	
2	
3	
4	
5	

PROFILE	DATE
NO.	
REVISIONS	
1	
2	
3	
4	
5	



8-22-74 FILE DATE
 REVISED AS BUILT P.H.
 DOUGLAS COUNTY ROAD DEPT.
 OAK AVENUE BRIDGE PROJ.
 1972 SHT 7
 GEORGE E. GRUBB COUNTY ENGR.