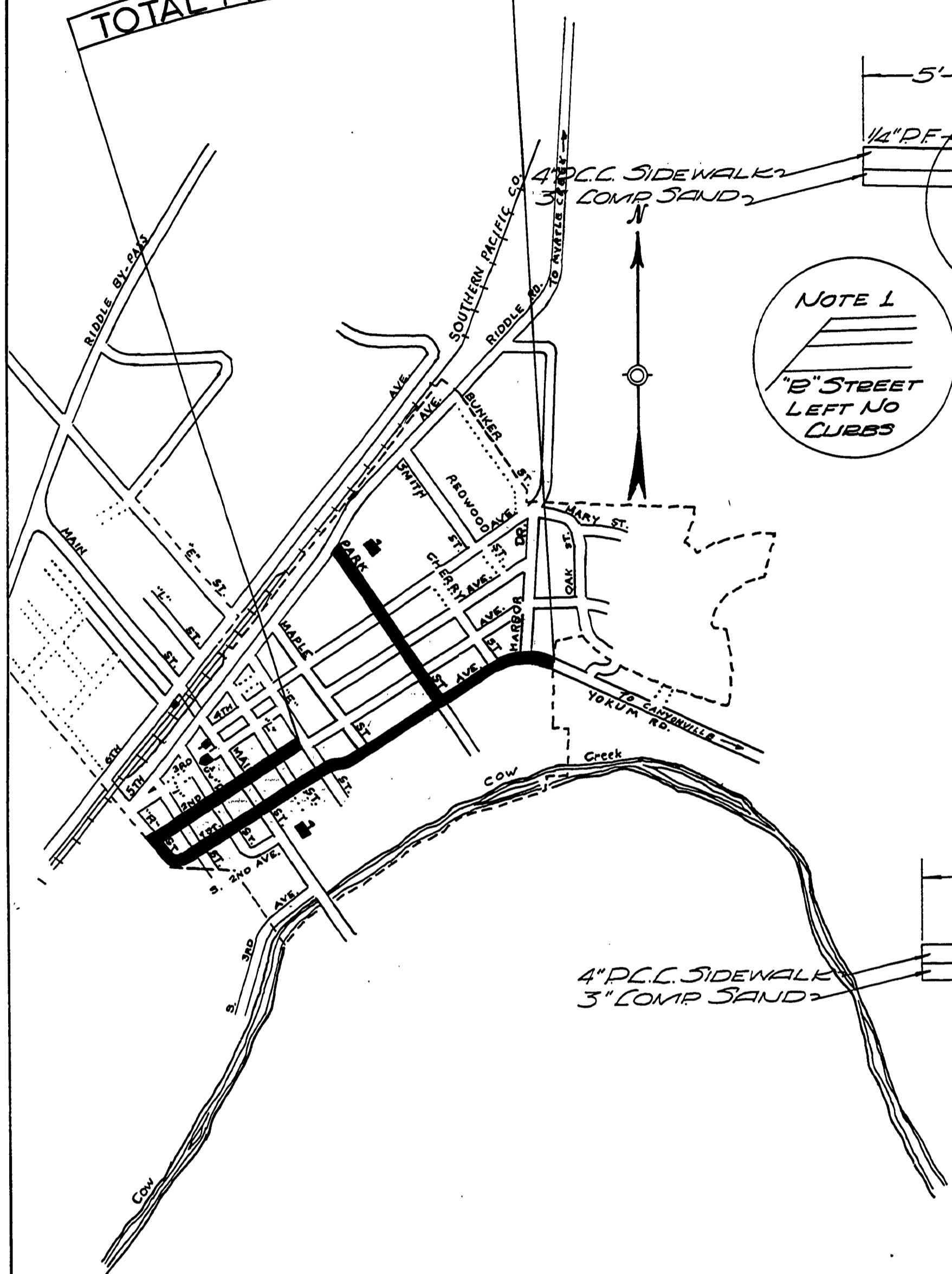
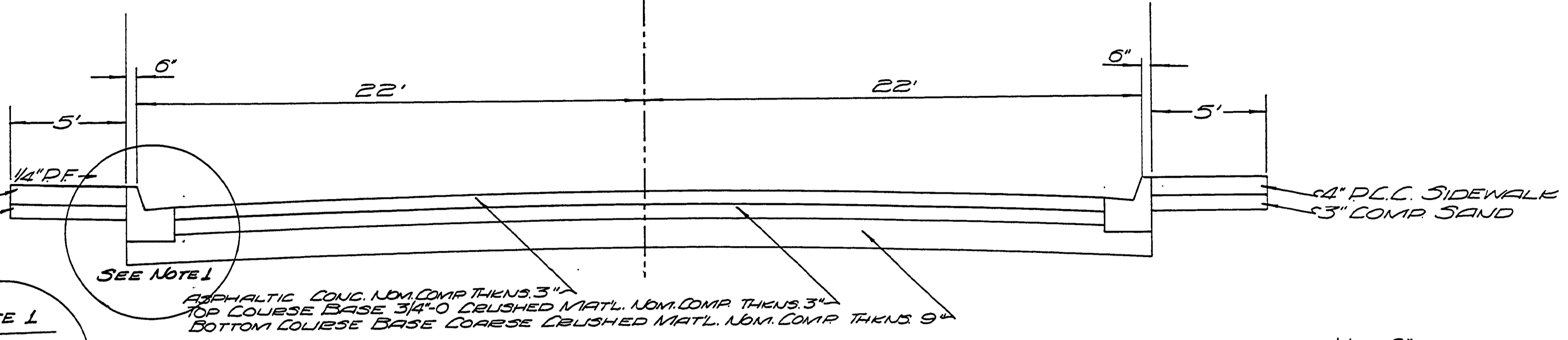


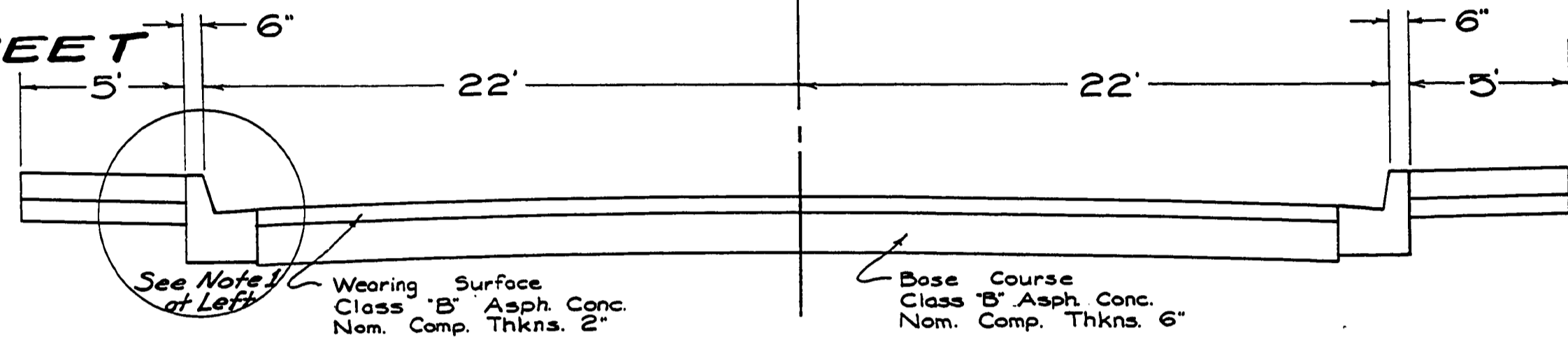
TOTAL PROJECT 1.20 MI.



NOTE 1
"B" STREET
LEFT NO
CURBS

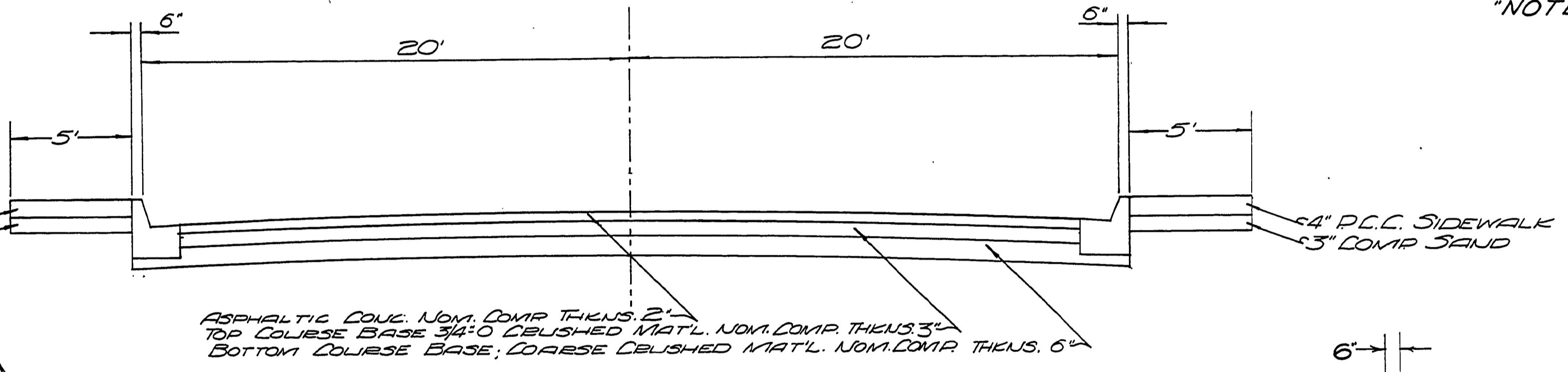


YOKUM ROAD FIRST STREET & R STREET
TYPICAL SECTION
ALTERNATE "A"

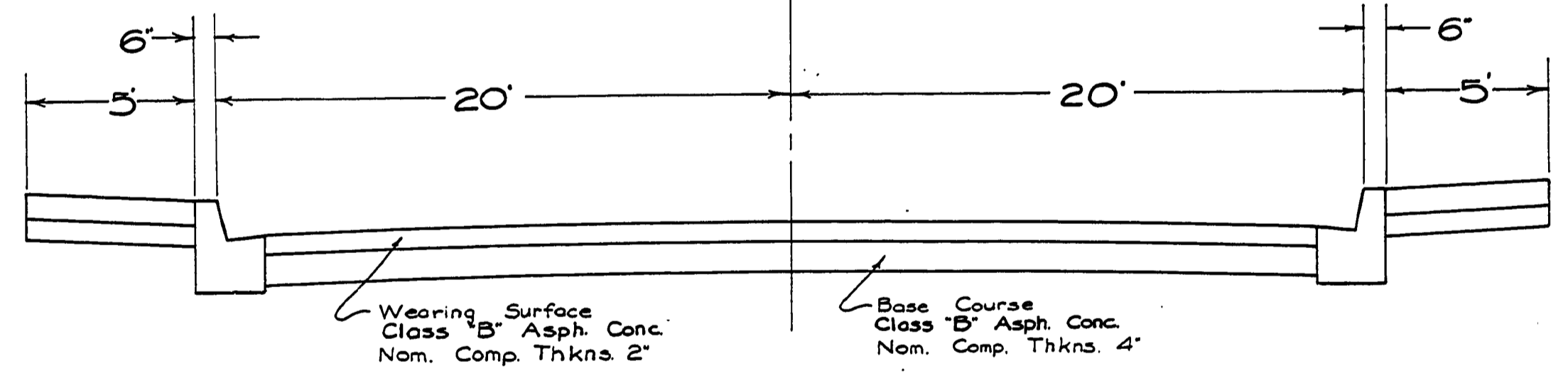


YOKUM ROAD FIRST ST. & "R" ST.
TYPICAL SECTION
ALTERNATE "B"

"NOTE" - See Alternate "A" for sidewalk detail.



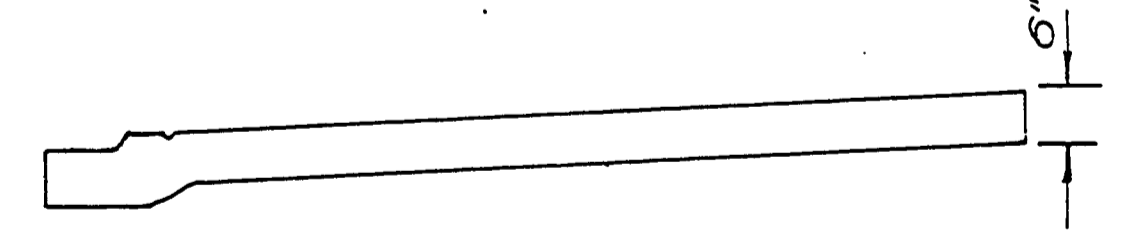
SECOND & PARK STREET
TYPICAL SECTION
ALTERNATE "A"



SECOND & PARK ST.
TYPICAL SECTION
ALTERNATE "B"

"NOTE" - See Alternate "A" for sidewalk detail.

DETAIL OF CONC. DRIVEWAY APPROACH
AND ALLEYS



SIDWALK REPAIR & REPLACEMENT
2ND STREET

- STA. 0+30 TO STA. 5+25 REMOVE & CONST. SIDEWALK RIGHT & LEFT SIDES
- STA. 5+75 TO STA. 6+84 ADD TO EXIST. SIDEWALK LEFT SIDE
- STA. 5+75 TO STA. 8+00 REMOVE & CONST. SIDEWALK RIGHT SIDE
- STA. 6+84 TO STA. 8+00 CONST. SIDEWALK LEFT SIDE
- STA. 8+00 TO STA. 10+05 CONST. SIDEWALK LEFT SIDE
- STA. 8+00 TO STA. 10+74 REMOVE & CONST. SIDEWALK RIGHT SIDE
- STA. 10+05 TO STA. 10+74 REMOVE & CONST. SIDEWALK LEFT SIDE
- STA. 11+34 TO STA. 13+55 REMOVE & CONST. SIDEWALK LEFT & RIGHT SIDE.

PARK STREET

- STA. 0+30 TO STA. 7+65 CONST. SIDEWALK RIGHT & LEFT SIDES
- STA. 8+25 TO STA. 12+75 CONST. SIDEWALK LEFT SIDE
- STA. 8+25 TO STA. 9+77 ADD TO EXIST. SIDEWALK RIGHT SIDE.
- STA. 12+30 TO STA. 13+00 ADD TO EXIST. SIDEWALK RIGHT SIDE

YOKUM RD. & R STREET

- STA. 2+00 TO STA. 2+26 CONST. SIDEWALK RIGHT & LEFT SIDES
- STA. 2+80 TO STA. 20+80 CONST. SIDEWALK LEFT SIDE
- STA. 2+40 TO STA. 2+94 REMOVE & CONST. SIDEWALK LEFT SIDE
- STA. 2+80 TO STA. 22+00 CONST. SIDEWALK RIGHT SIDE
- STA. 22+00 TO STA. 22+22 REMOVE & CONST. SIDEWALK RIGHT SIDE
- STA. 22+22 TO STA. 22+25 CONST. SIDEWALK RIGHT SIDE
- STA. 23+00 TO STA. 33+50 REMOVE & CONST. SIDEWALK RIGHT SIDE.
- STA. 27+94 TO STA. 31+30 CONST. SIDEWALK LEFT SIDE.
- STA. 31+30 TO STA. 32+40 REMOVE & CONST. SIDEWALK LEFT SIDE
- STA. 32+90 TO STA. 33+00 CONST. SIDEWALK LEFT SIDE
- STA. 33+50 TO STA. 36+30 CONST. SIDEWALK RIGHT SIDE
- STA. 36+30 TO STA. 37+35 REMOVE & CONST. SIDEWALK RIGHT SIDE.

NOTE: CURB RETURN RADII ARE 15' UNLESS NOTED OTHERWISE. R.L.A.



12-7-70	AS BUILT PLANS	D.E.N.
DATE	REVISIONS	BY
CITY OF RIDDLE		
TYPICAL SECTION		
DESIGN: J.S.B.	HORIZ. SCALE: NONE	
DRAWN: R.C.	VERT. SCALE:	
CHECKED: R.J.D.		
DATE: 4-30-69	SHT. 1 OF 7	
BAUGHMAN AND ACKARET INC.		
ENGINEERING - SURVEYING - PLANNING		
ROSEBURG, OREGON		