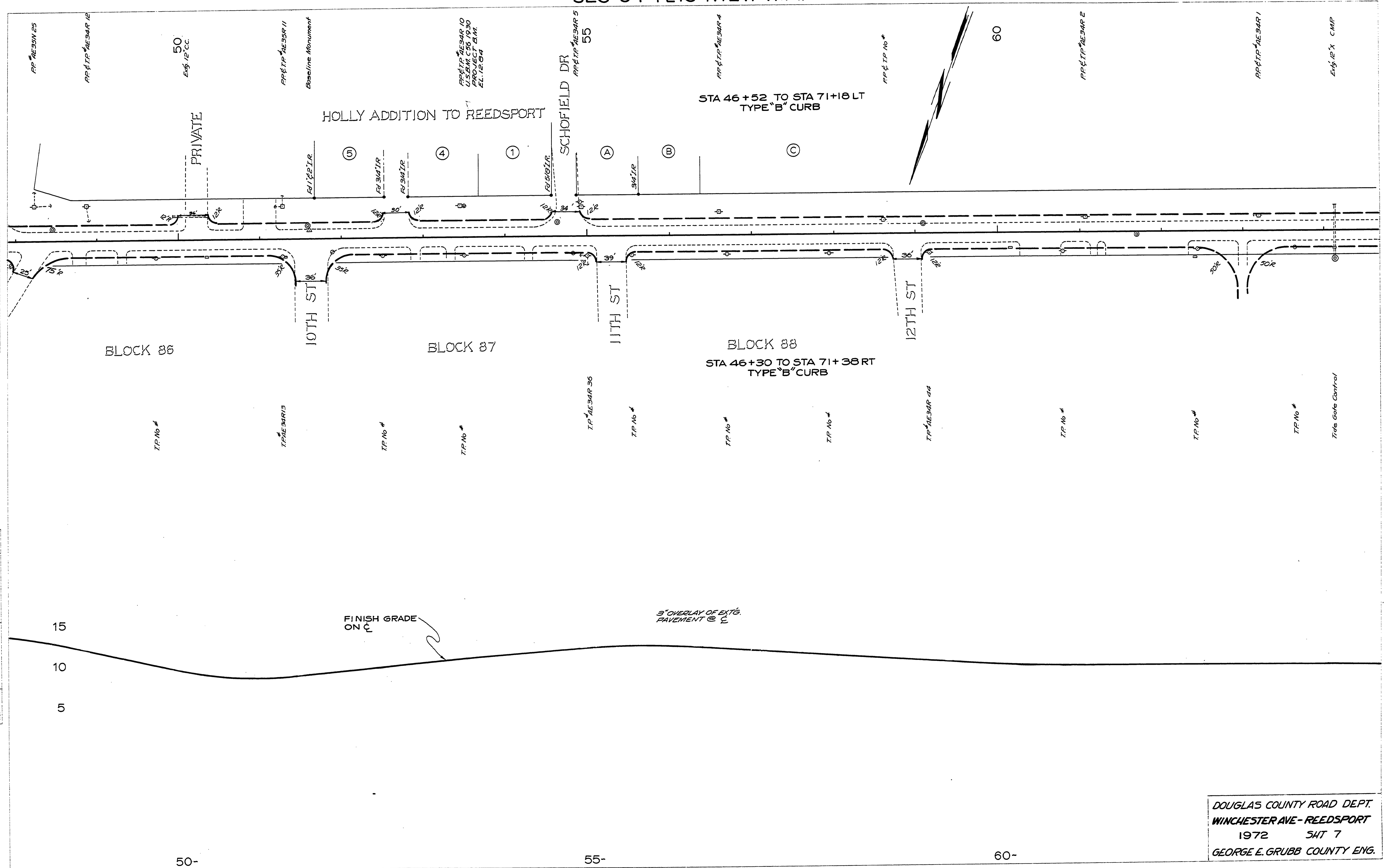


SEC 34 T21S R12W W.M.

PLAN	SURVEYED	DATE
NOTE BOOK	BY	
NO.		
	APPROVED	
	BY	
	DATE	
	BY	
	DATE	

PROFILE	SURVEYED	DATE
NOTE BOOK	BY	
NO.		
	APPROVED	
	BY	
	DATE	
	BY	
	DATE	



DOUGLAS COUNTY ROAD DEPT.
 WINCHESTER AVE - REEDSPORT
 1972 SH 7
 GEORGE E. GRUBB COUNTY ENG.