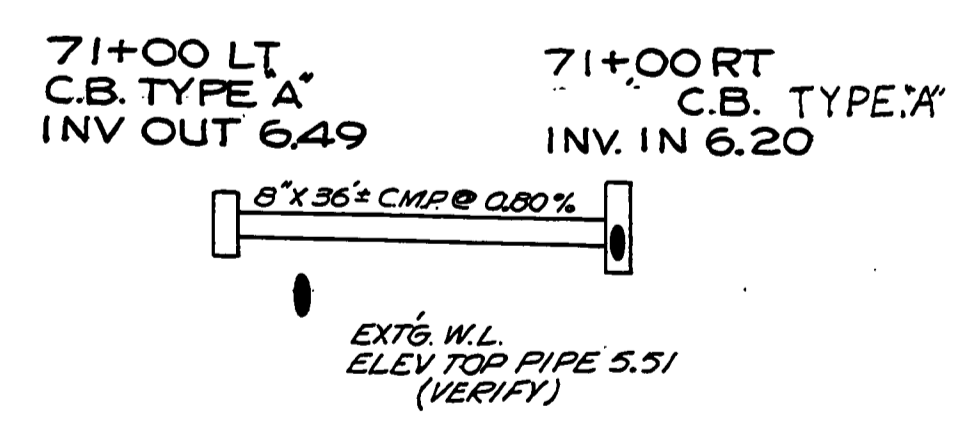
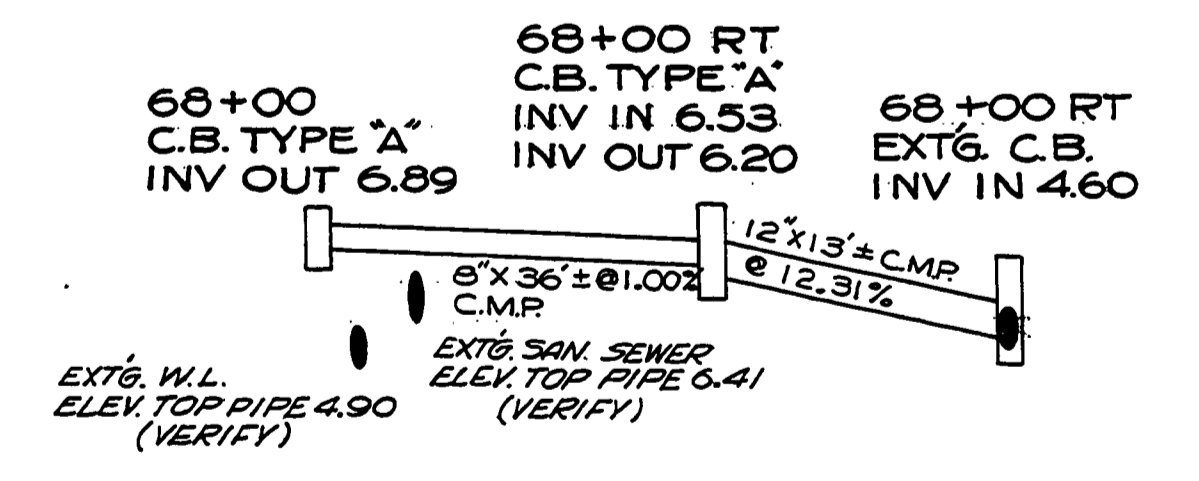
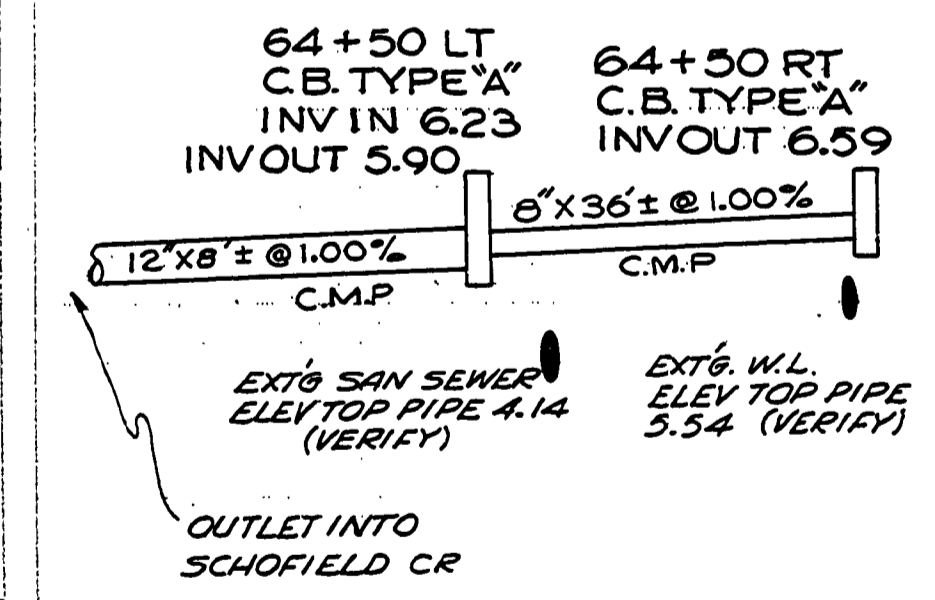
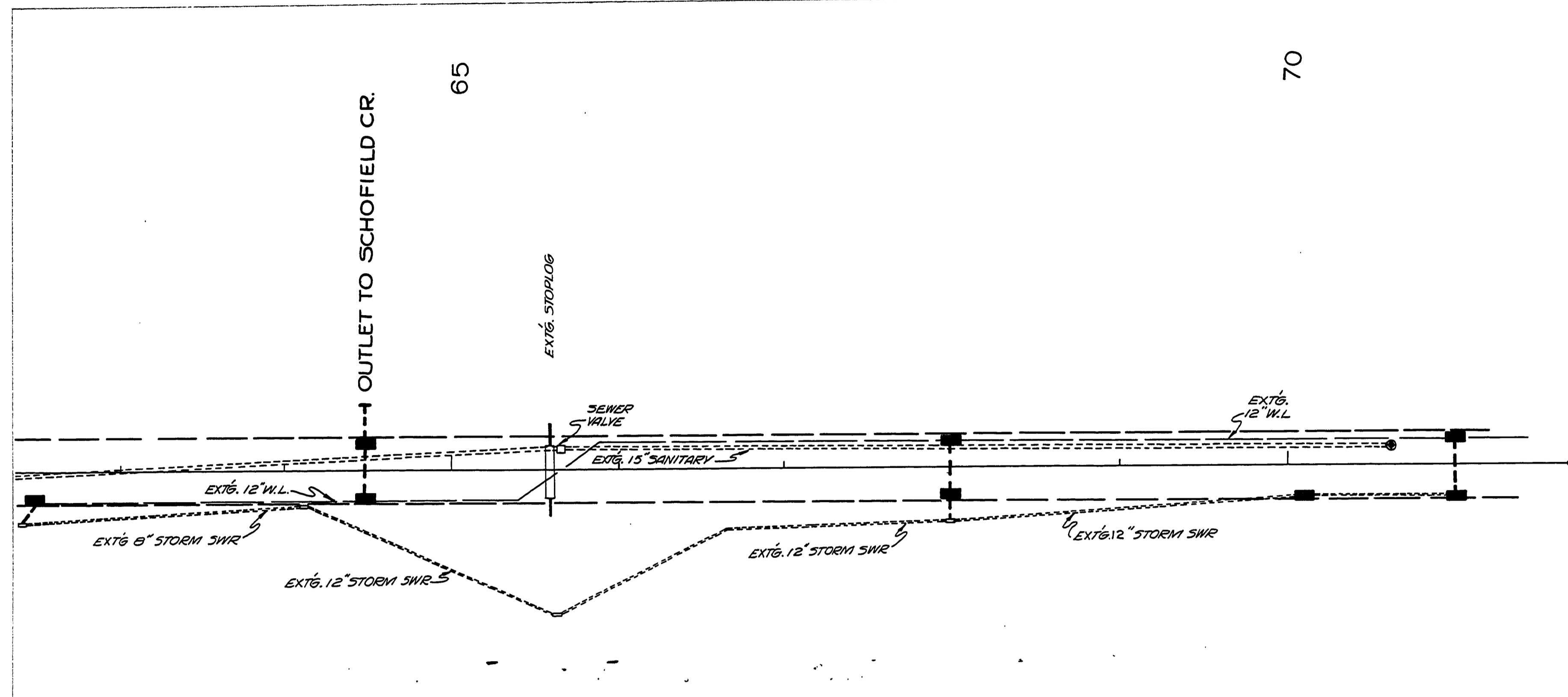


PLAN	SURVEYED	DATE
	NOTED	BY
PROFILE	PLANNED	DATE
	NOTED	BY

PLAN	SURVEYED	DATE
	NOTED	BY
PROFILE	PLANNED	DATE
	NOTED	BY



65+00

70+00

REVISED AS CONSTRUCTED  
 DOUGLAS COUNTY ROAD DEPT  
 WINCHESTER AVE - REEDSPORT  
 STORM SEWER  
 APRIL 1971 SH1 12  
 GEORGE E. GRUBB COUNTY ENGR.