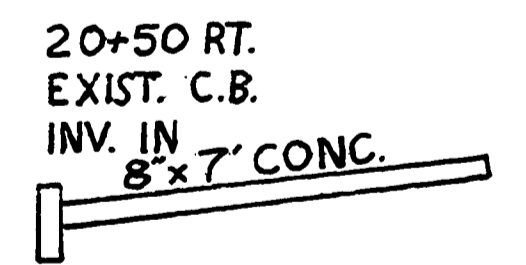
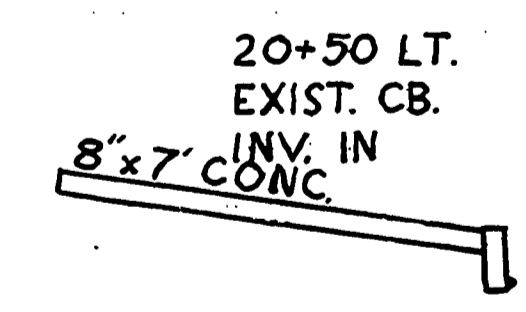
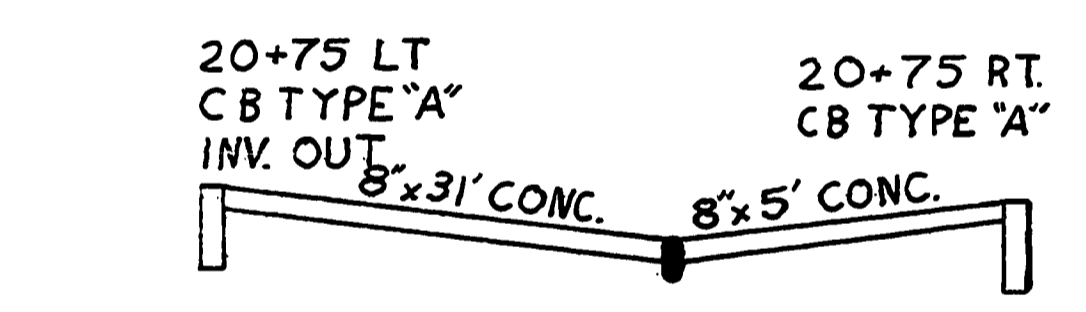
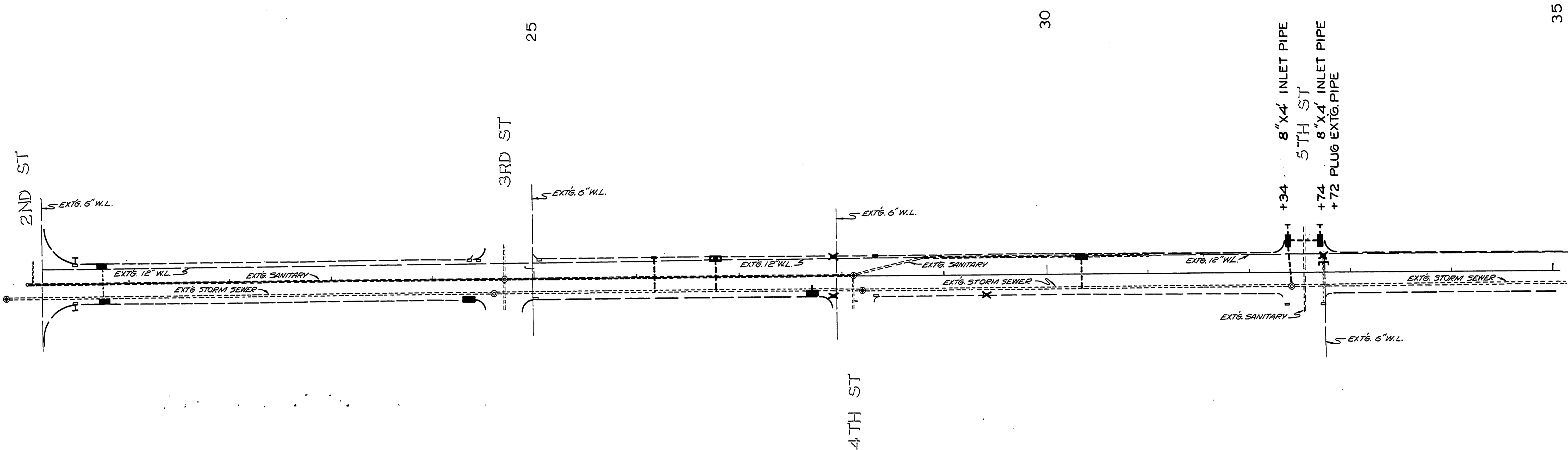
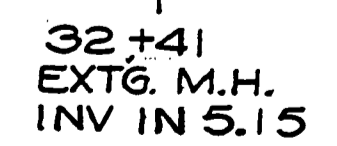
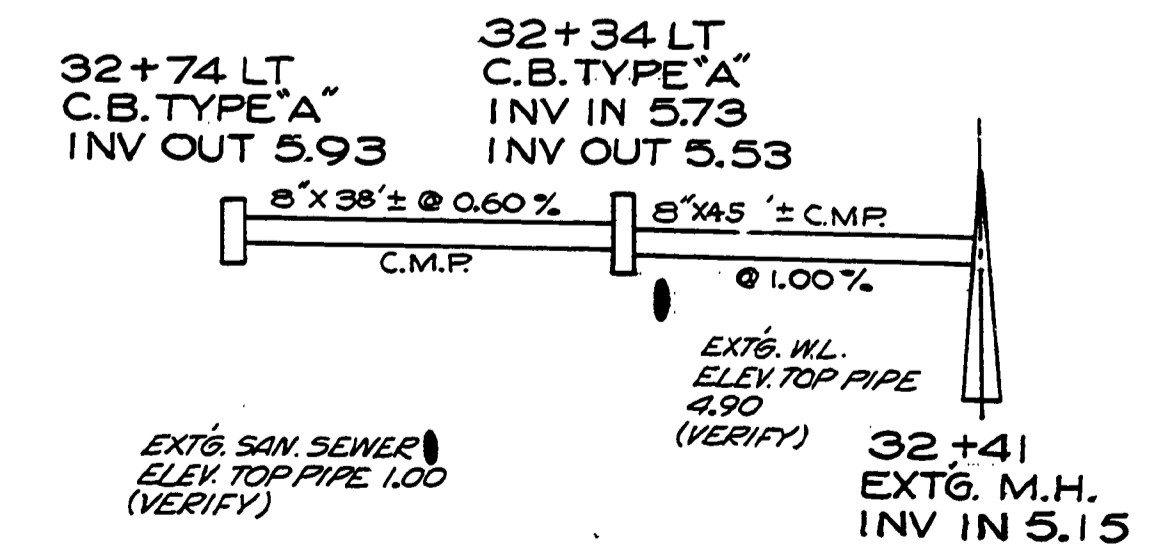
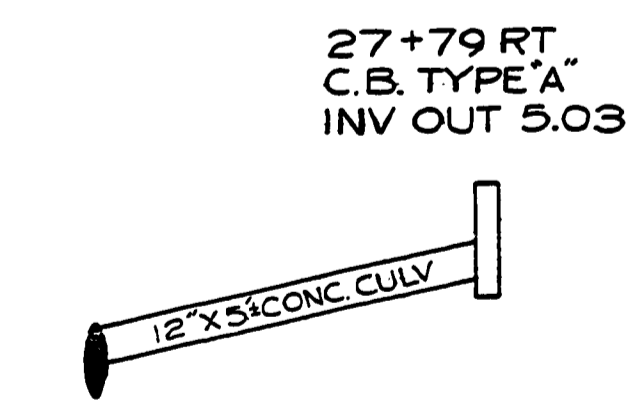
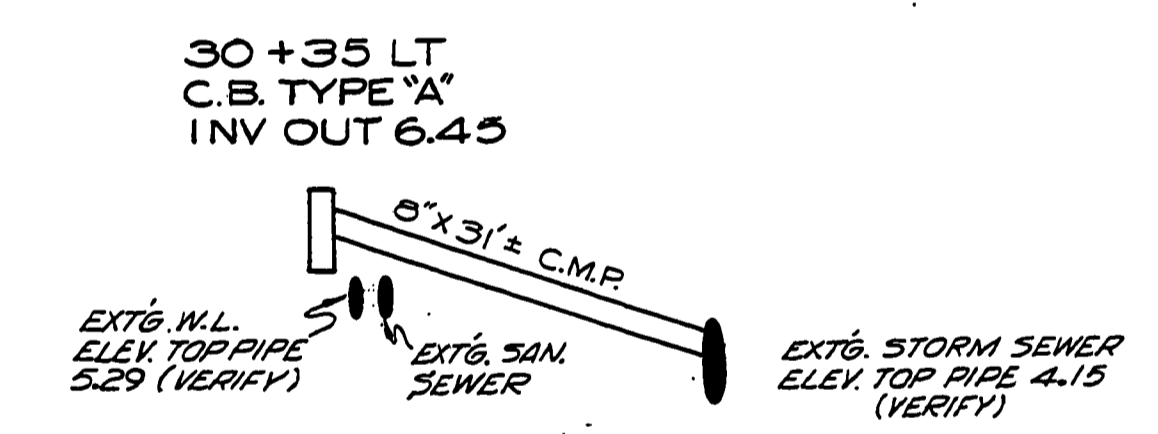
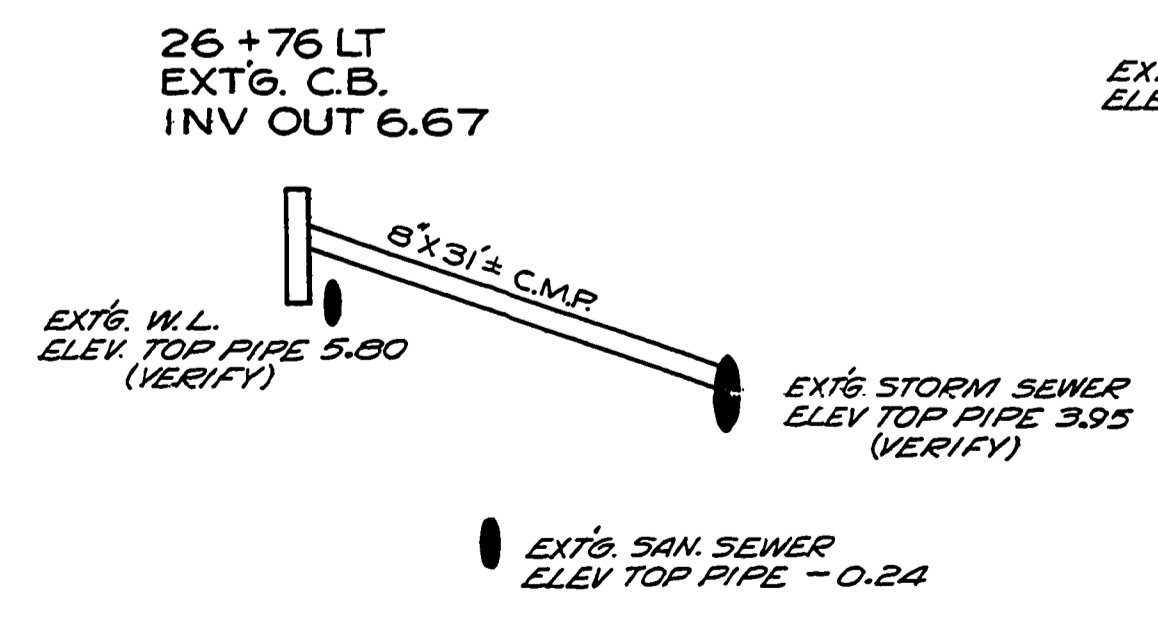
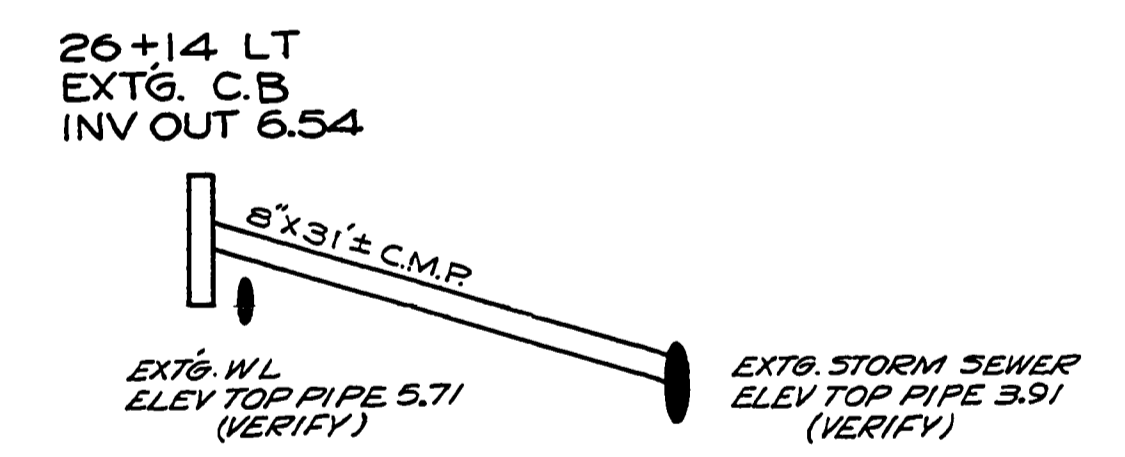


PLAN	SURVEYED.....	DATE
	PLOTTED.....	
	NOTED.....	
	BY.....	
	NO.....	

PROFILE	SURVEYED.....	DATE
	PLOTTED.....	
	NOTED.....	
	BY.....	
	NO.....	



NOTE:  
COVERS PLACED OVER C.B.  
20+50 LT. & 20+50 RT. & PAVED OVER



REVISED AS CONSTRUCTED  
DOUGLAS COUNTY ROAD DEPT  
WINCHESTER AVE-REEDSPORT  
STORM SEWER  
APRIL 1971 SHT 9  
GEORGE E. GRUBB COUNTY ENGR.

25+00

30+00