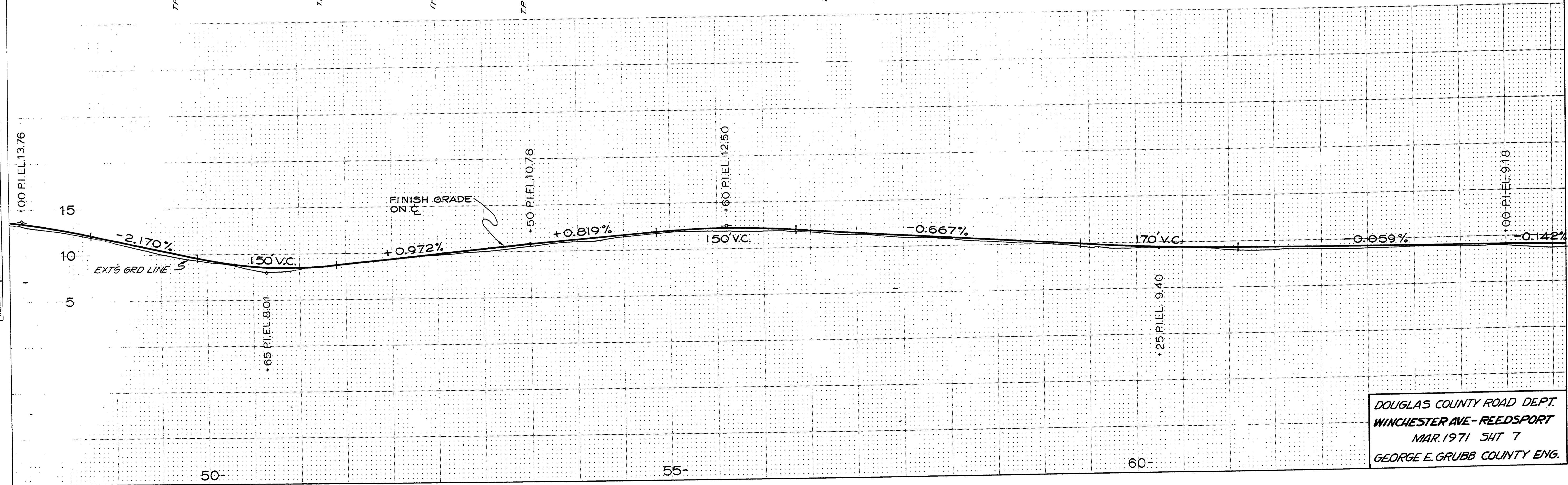
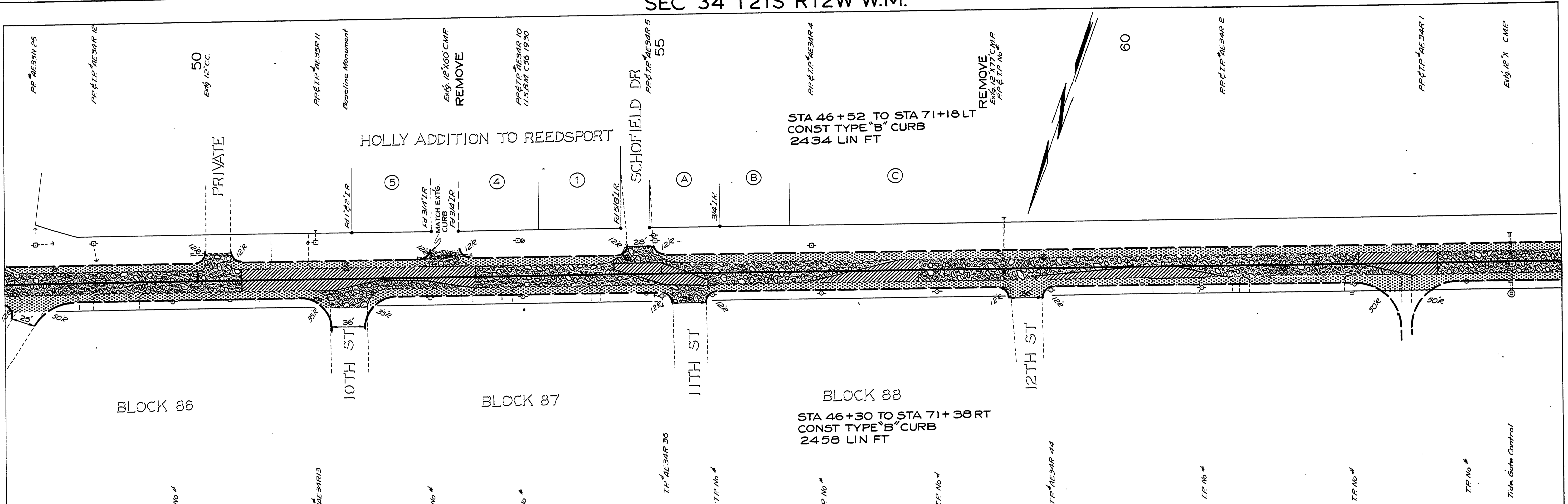


SEC 34 T21S R12W W.M.

DATE	
BY	
APPROVED	
ALIGNED CHECKED	
NOTE BOOK	
NO	

DATE	
BY	
APPROVED	
ALIGNED CHECKED	
NOTE BOOK	
NO	



DOUGLAS COUNTY ROAD DEPT.
 WINCHESTER AVE - REEDSPORT
 MAR. 1971 547 7
 GEORGE E. GRUBB COUNTY ENG.