

GOVERNMENT CORNER RESTORATION FORM

FILED

TOWNSHIP 26S RANGE 3W SEC. 1 PLSS # 640620

Date: 2/24/26 By: KC
This survey consists of:

DOUGLAS COUNTY OREGON

DATE 2-17-26

Map: _____

Narrative: _____
Corner Rpt: CS 67/62-14

Corner Designation

CS 1/16 sec 1

DOUGLAS COUNTY
SURVEYOR

Monument(s) Found: (Condition and Source)

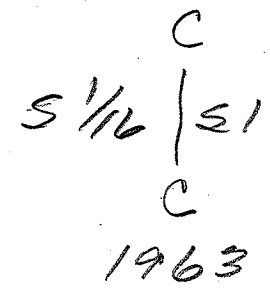
3 1/4" BLM BRASS CAP
proj 7"

- Condition report
- Not Found
- Renewed
- Unrecorded
- Surveyed In

Previous Renewals

BLM Resurvey 1963 16/32 pg 13393
Ausland 2011 ST HWY 138-013A-C

MONUMENT DETAIL



Accessories Found

Burnt - SAWN 26" X 2 1/2 FT D. FIR STUMP
N 29° E 19.7 FT (Rec 31 lbs 20.5 FT slope)
ADD 3 1/2" MAG NAIL TOP CENTER FULLY
HEATED SINGLE BLAZE

Burnt - SAWN 26" X 3 FT N 89° W 22.4 FT
FULLY HEATED SINGLE BLAZE ADD 3 1/2"
MAG NAIL TOP CENTER

Bolt 1 1/8" SQUARE HEAD AND 3" ROUND
COLLAR 2" BELOW TOP S 88° 50' W 9.1 FT
(Rec 0.148 lbs) A

Alum post 0.5 FT westerly

Monument Set (Procedure and Description)

MONUMENT DETAIL

Handwritten notes in the Monument Set section.

New Accessories

Blank lines for New Accessories.

Sketch of Monument, Accessories, and General Area

Location & Comments

MON IS ON SMALL BENCH ON A moderate west slope in plot CLEARED after 2020 FIRE approx 55 FT WEST OF ABANDONED FOREST ROAD TRIMBLE GEO XT POSITION

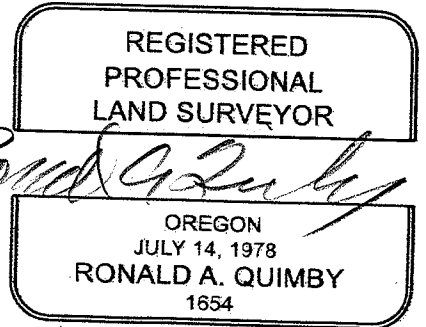
AREA BURNED 9/2020
Comp. Decline. 14 1/2° E
Agency DCSO
Party Chief S. F. HAUSE
Note keeper
Witnesses J. Korsun

43° 33' 29.8760 N

123° 00' 09.8746 W

CS 67162-14

pg 2/4



County Surveyor's Record, Douglas County, Oregon

Dependent Resurvey, Subdivisional Lines, T. 26 S., R. 3 W.

CHAINS

T 26 S R 3 W

1/4 S 16
S 21

1962

from which

A cedar, 16 ins. diam., bears N. 61° E., 162 lks. dist., mkd. 1/4 S16 BT.

A cedar, 9 ins. diam., bears S. 19 3/4° E., 172 lks. dist., mkd. 1/4 S21 BT.

Corner falls in a dirt fill of old skid road.

Subdivision of Section 1, T. 26 S., R. 3 W.

The following subdivision of sections was executed in conformity with legal surveying practice. The record of true line field notes only is set forth in the following field notes.

From the 1/4 sec. cor. of secs. 1 and 12.

N. 0° 54' E., on the N. and S. center line of sec. 1.

Along the North Umpqua Highway, nearly level.

10.77 Leave North Umpqua Highway, bears N. 5° W. and S. 5° E.; asc. 51 ft. over bluff. Three-wire utilities line runs along highway.

13.58 Top of bluff, slopes W.; desc. 11 ft. along W. slope, through light timber and undergrowth.

20.23 Point for the center S 1/16 sec. cor. of sec. 1. Set an iron post, 28 ins. long, 2 1/2 ins. diam., in the ground, with brass cap marked

TRIMBLE GEO XT POSITION

43.33298760°N

123.00098746°W

RECLINATION 14 1/4° E

RENEWED 2/19/26

3 1/4" BC, S 1/16 S 1 PROT 7"

FD. BC BY ANDREW AUSLAND ODOT
B/2011 - ST. HWY 138-013 A-C

1963

from which

BURNED SAWN 26" x 2 1/2 FT STUMP AD fir, 23-ins. diam., bears N. 24° E., 31 lks. dist., mkd. CS 1/16 S1 BT. FHSB

BURNED SAWN 26" x 3 FT STUMP AD fir, 22-ins. diam., bears N. 84° W., 34 lks. dist., mkd. CS 1/16 S1 BT. FHSB

From this point a bolt, 3/4 ins. diam., firmly set, protruding 1 in. above the ground, bears S. 88° 50' W., 0.148 chs. dist. at a point determined by the County Surveyor, in 1947. END ALUM LATH 0.5 FT. WSTLY

Ascend 60 ft. over S. slope.

22.40 Dirt road, 15 lks. wide, bears N. 80° W. and S. 60° E.

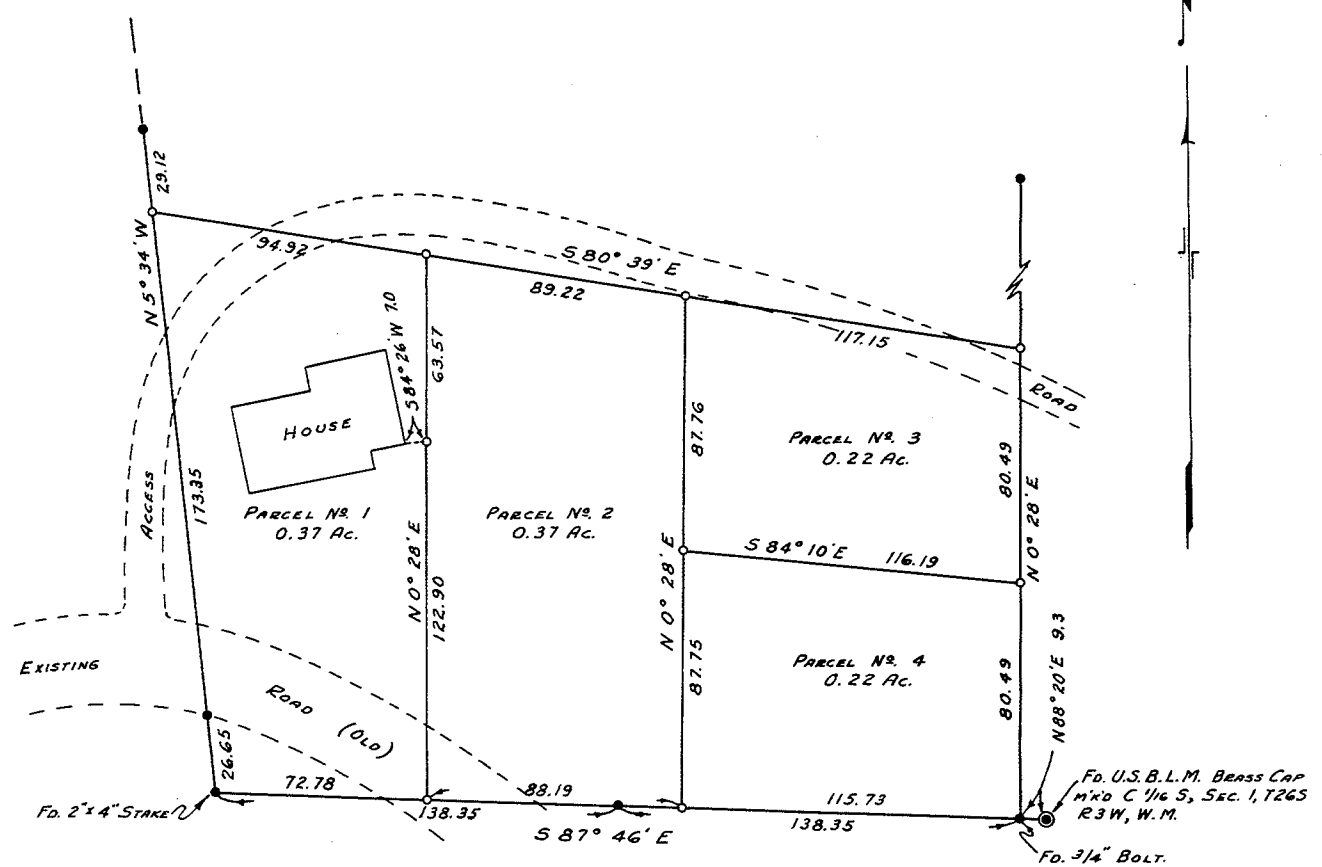
26.34 Three-wire transmission line, bears N. 70° W. and S. 50° E.

27.27 Spur, slopes W.; desc. 81 ft. over NW. slope.

MON. IS ON SMALL BENCH ON A MODERATE WEST SLOPE IN A PLOT OF LAND CLEARED AFTER 2020 FIRE. MON. IS APPROX 55 FT. WEST FROM AN ABANDONED FOREST ROAD.

MINI GIS
43.33298°N
123.00098°W

ADD 3 1/2" MAG NAIL
TOP CENTER TO
BOTH FOUND B.T.S
CS 67162-14 09/24
H-20116250



● = Fd. 5/8" IRON ROD, UNLESS OTHERWISE NOTED.
 ○ = SET 1/8" IRON ROD.

NOTE:
 BEARINGS SHOWN ARE BASED ON THE BEARING OF S87°46'E ALONG THE SOUTHERLY BOUNDARY OF PARCELS, PER C.S. MAP FILE M 29/22, & C.S. FILE 39/125. POINTS SHOWN AS FOUND ARE FROM C.S. MAP FILE M 29/22, EXCEPT 1/16 COR.
 THIS SURVEY REVISES AND SUPERSEDES A SURVEY DATED AUG. 14, 1965 FILED WITH THE COUNTY SURVEYOR IN HIS MAP FILE M30/33.
 THIS SURVEY MADE TO DIVIDE PARCEL AS SHOWN, NOW OWNED AS JOINT INTEREST.

Bruce A. Shaner

REVISED
 SURVEY FOR DEED DESCRIPTIONS
 IN SECTION 1, T26S, R3W, W.M.

FILED
 RECEIVED
 OCT 5 1965
 COUNTY SURVEYOR
 DOUGLAS COUNTY, ORE.

SURVEYED FOR E.C. NOLTE OCT. 1965.
 SURVEYED BY BRUCE A. SHANER SCALE 1"=40'

CS 67/102-74 pg 4/4