

TOWNSHIP 255 RANGE 3W SEC. 12

PLSS # 640500

Date: 2/12/04 By: kl  
This survey consists of:

DOUGLAS COUNTY OREGON

DATE 2-11-26

Map: \_\_\_\_\_

Narrative: \_\_\_\_\_

Corner Rpt: CS 67/62-13

Corner Designation

1/4 COR S12  
S13

DOUGLAS COUNTY  
SURVEYOR

Monument(s) Found: (Condition and Source)

GLD BRASS CAP ON  
1" IRON PIPE

\_\_\_ Condition report

\_\_\_ Not Found

Renewed

\_\_\_ Unrecorded

\_\_\_ Surveyed In

Previous Renewals

GLD Resurvey 1940 Vol 27 pg  
11548-49

DCSD 1966 CS 54/27-19

Edwards 2017 CS 65/95-19

JULIA ROO 1979 M 68-32

MONUMENT DETAIL

1/4 S12  
S13  
1943

Accessories Found

54" X 3 FT SAWN BURNED FIR STUMP  
N 10 1/2° W 45.5 FT (Rec N 14° W 44.2 FT  
36" X 3 FT SAWN BURNED ROTTED FIR  
STUMP S 19 3/4° W 53.2 FT (Rec S 14° W 52 3/4)  
BURNED DEAD 17" Hemlock S 64° E 15.3 FT  
Partly Healed single BLAZE FACE BURNED OFF  
BURNED DEAD 6" FIR N 46° W 6.1 FT PARTLY  
HEALED SINGLE BLAZE FACE BURNED OFF

ADD 3 1/2" MAG NAIL RIGHT SIDE CENTER  
TO BEARING TREES

Monument Set (Procedure and Description)

MONUMENT DETAIL

---



---



---



---



---



---

New Accessories

---



---



---



---



---



---



---



---



---



---

Sketch of Monument, Accessories, and General Area

Location & Comments

Trimble GED XT Position

43° 40' 24.1323

123° 00' 11.0893

Comp. Decline. 14 1/4 E  
 Agency DCSD  
 Party Chief S. Plause  
 Note keeper \_\_\_\_\_  
 Witnesses J. Lorusso

REGISTERED  
 PROFESSIONAL  
 LAND SURVEYOR

*Ronald A. Quimby*

OREGON  
 JULY 14, 1978  
 RONALD A. QUIMBY  
 1654

EXPIRES: 12/31/2026

CS 67/62-13 pg 2/4

PRIMARY CORNER DESCRIPTION 1/4 Corner for Secs. 12 and 13

Alias _____	Description _____
Alias _____	Description <u>TRIMBLE GEO XT POSITION</u>
Alias _____	Description _____
Alias _____	Description <u>43.40241323</u>

123.00110893

Original, Laban H. Wheeler, Under Contract #467 dated April 7, 1883 (DCSO Records, Volume 9 Page 3676)

Set Dogwood post, 3 ft. long, 3" sq., 24" in the ground for 1/4 sec. cor., mkd. 1/4 S on W. face, from which

A Fir 6" dia., bears N.2°W., 18 lks. mkd. 1/4 S BT.

A Fir 8" dia., bears S.16°W., 23 lks. mkd. 1/4 S BT.

GLO Dependent Resurvey by Norman D. Price, Under Special Instructions dated April, 5, 1940. (DCSO records, Volume 27 Pages 11548-49)

Proportional measurement. Set an iron post, 3 ft. long, 1" dia., 28" in the ground, for 1/4 sec. cor, with brass cap mkd

DECLINATION 14 1/4° E

1/4	S12
	S13
	1943

from which

54" x 3 ft. A Fir 48" dia., bears N.4°W., 67 lks., mkd. 1/4 S12 BT.

36" x 3 ft. A Fir 42" dia., bears S.14°W., 80 lks. mkd. 1/4 S13 BT.

Doug. County Surveyors Office - Vernon Tracy; Joe Brady; Jack Heritage - July/Aug. 1966 - C.S. File 54/27-19

Found - 1943 GLO brass cap mkd.

SEE ABOVE 48" now 52" Fir N.4°W., 44.2 ft. Alive, shows good scar. We do not open. 19 3/4

SEE ABOVE 42" Fir now rotted snag, S.14°W., 52.8 ft. shows scribe.

NO EVIDENCE

New BTs - 9" Hemlock S.63°W., 13.4 ft. mkd. 1/4 S13 CS BT.

MISS ROOTHOLE - 8" Hemlock N.24°E., 22.7 ft. mkd. 1/4 S12 CS BT.

This cor. lies on gentle SE slope in heavy Fir & Hemlock timber. ✓

David Edwards - Crew: Brant Miller & Eric Sprinkle - 8/30/2017 - C.S. File 65/95-59

Found - 1943 brass capped iron pipe by G.L.O. found in good condition.

1943 B.T. A 54" Fir stump bears N. 10 1/2° W 45.5, 44.2'.

? The other 1943 B.T. is gone. ? SEE 1940 RENEWAL

Both 1966 D.C.S. bearing trees are gone.

New BURNED DEAD 17" A 12" dia. Hemlock scribed "1/4 S13 BT" bears S.64°E., 15.8'. PHSB FACE BURNED OFF

BURNED DEAD 6" A 5" dia. Fir scribed "1/4 S12 BT" bears N.46°W., 6.1'. PHSB FACE BURNED OFF

Six foot steel posts are set 2 ft N.84°E. & 2 ft S.84°W.

Compass Declination 15° East 1

ADD 3 1/2" MAGNAIL R.S.C. TO THE "NEW" BTs

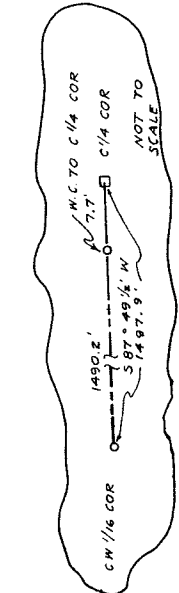
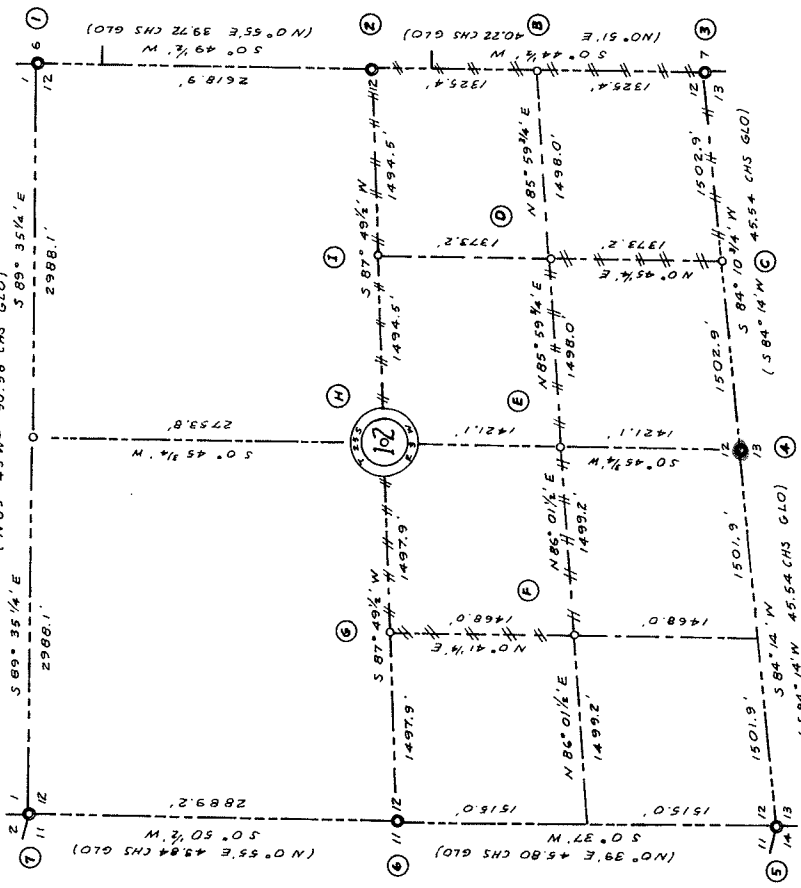
MINI GIS  
43.40244  
123.00108

SAWN BURNED  
SAWN ROTTED -  
BURNED

✓ ✓  
N 53 1/4° E 95.8

FILE NO. 12  
RECORDED 10  
COUNTY SURVEYOR  
DOUGLAS COUNTY, OREGON

WEYERHAEUSER CO.  
SURVEY  
OF  
SECTION 12, T25S, R3W, W1M  
DOUGLAS COUNTY, OREGON



**CORNERS USED FOR CONTROL**

① **NORTHEAST SECTION CORNER**  
FOUND A GLO BRASS CAP 1943  
40" FIR STUMP, 573M, 41.2' CS BT  
43" FIR STUMP, N71M, 46.0' CS BT

② **EAST 1/4 CORNER SECTION 12 ONLY**  
FOUND A GLO BRASS CAP 1943  
30" FIR, 378M, 15.2' GLO BT  
36" FIR, 321M, 11.2' GLO BT

③ **SOUTHEAST SECTION CORNER**  
FOUND A GLO BRASS CAP 1943  
18" FIR, N51M, 23.0' GLO BT  
24" FIR, 554M, 29.0' GLO BT  
10" FIR, 544M, 86' CS BT

④ **SOUTH 1/4 CORNER**  
FOUND A GLO BRASS CAP UPROOTED  
24" FIR, N42M, 42' GLO BT  
54" FIR, 544M, 21' GLO BT  
42" FIR STUMP, 544M, 52.0' GLO BT  
9" DOGW HEMLOCK, 563M, 13.4' CS BT  
8" HEMLOCK, N84E, 22.7' CS BT

⑤ **SOUTHWEST SECTION CORNER**  
FOUND A GLO BRASS CAP 1943  
24" HEM, N46E, 15.3' CS BT  
30" HEM, N53M, 20.8' CS BT  
48" FIR STUMP, N88 1/2 W, 12.9' GLO BT, MK'D 11.9'

⑥ **WEST 1/4 CORNER**  
FOUND A GLO BRASS CAP 1943  
40" FIR STUMP, 574 1/2 E, 29.7' GLO BT  
8" FIR, 540M, 29.4' CS BT  
24" CEDAR STUMP, 567E, 53.3' CS BT

⑦ **NORTHWEST SECTION CORNER**  
FOUND A GLO BRASS CAP 1943  
6" MAPLE, N80E, 44.4' CS BT  
15" HEM STUMP, N8 1/2 W, 21.8' GLO BT, MK'D YEW STUMP

**CORNERS ESTABLISHED OR RE-ESTABLISHED**

⑧ **NORTH 1/4 CORNER**  
SET A 3/4" X 36" IRON PIPE  
6" FIR, 389M, 25.5' TO R.R. SPIKE  
8" FIR, 325M, 57.7' TO R.R. SPIKE

⑨ **SOUTH 1/16 CORNER SECTION 12 ONLY**  
SET A 3/4" X 36" IRON PIPE  
12" HEM, N15E, 33.4' TO R.R. SPIKE  
26" HEM, N37M, 14.7' TO R.R. SPIKE

⑩ **EAST 1/16 CORNER SECTION 12 & 13**  
SET A 3/4" X 36" IRON PIPE  
18" HEM, N7E, 19.6' TO R.R. SPIKE  
12" HEM, 559E, 5.1' TO R.R. SPIKE

**CORNERS ESTABLISHED OR RE-ESTABLISHED - CONT**

⑪ **SOUTHEAST 1/16 CORNER**  
SET A 3/4" X 36" IRON PIPE  
16" FIR, N73E, 4.5' TO R.R. SPIKE  
16" FIR, N73E, 13.3' TO R.R. SPIKE

⑫ **CENTER SOUTH 1/16 CORNER**  
SET A 3/4" X 36" IRON PIPE  
24" HEM, 564E, 22.7' TO R.R. SPIKE  
24" HEM, N37M, 22.5' TO R.R. SPIKE

⑬ **SOUTHWEST 1/16 CORNER**  
SET A 3/4" X 36" IRON PIPE  
22" HEM, N47E, 9.5' TO R.R. SPIKE  
16" HEM, 570E, 10.0' TO R.R. SPIKE

⑭ **CENTER WEST 1/16 CORNER**  
SET A 3/4" X 36" IRON PIPE  
8" FIR, 577E, 9.4' TO R.R. SPIKE  
6" FIR, 576M, 16.4' TO R.R. SPIKE

⑮ **CENTER 1/4 CORNER**  
POINT FOR CENTER 1/4 CORNER FALLS ON SIDE OF ROCK BLUFF. SET A 3/4" X 36" IRON PIPE 587°49'1/2" W, 77' FROM POINT FOR CENTER 1/4 CORNER AS A WITNESS CORNER.  
24" CEDAR, 590W, 10.7' TO R.R. SPIKE  
16" HEM, N35W, 17.7' TO R.R. SPIKE

⑯ **CENTER EAST 1/16 CORNER**  
SET A 3/4" X 36" IRON PIPE  
48" FIR, N1E, 22.0' TO R.R. SPIKE  
24" HEM, 535W, 17.0' TO R.R. SPIKE

**NOTES**

(1) BEARINGS BASED ON GLO 1943 SURVEY FOR N 1/2 SOUTH LINE OF THIS SECTION

(2) O INDICATES GLO MONUMENT FOUND

(3) O INDICATES MONUMENT SET

(4) ——— INDICATES PROPERTY LINE

(5) MARKED WITH NOTCH IN BLAZE OF TREE REFERS TO HEAD OF SPIKE. WEYERHAEUSER COMPANY CORNER PLATES MAILED ON ALL ESTABLISHED BEARING TREES

(6) SCALE: 1" = 600'

(7) SURVEYED OCT. NOV-DEC 1977 BY TRIANGLE ENGINEERING CO., EUGENE, OR. 97401

(8) COORDINATES:  
TRAV TO RE-SET N 1/4 COR 175.400  
TRAV TO S 1/4 AND SW COR 118.500  
WEYCO PROP TRAY 116.700  
TRAV TO W 1/4 COR 120.300  
TRAV TO NW COR 116.500  
TRAV TO NE AND E 1/4 COR 121.300

Juliano