

GOVERNMENT CORNER RESTORATION FORM

FILED

TOWNSHIP 30S RANGE 7W SEC. 36 PLSS # 600120

Date: 4/22/25 By: ke
This survey consists of:

DOUGLAS COUNTY OREGON

DATE 4-2-25

Map: _____
Narrative: _____
Corner Rpt: CS (67) UD-20

DOUGLAS COUNTY
SURVEYOR

Corner Designation

S 1/4 S35/S36

Monument(s) Found: (Condition and Source)

1977 BLM BRASS CAP
BURIED 15"

- Condition report
- Not Found
- Renewed
- Unrecorded
- Surveyed In

Previous Renewals

BLM Established 1977
Vol 41 pg 16242
Smalley 1992 m 112-52

MONUMENT DETAIL

Accessories Found

5'x5'x3' Boulder S26 3/4°W 20.5 FT
MARKED X BO

27" Fir S26°E 55.3 FT (Rec 55.8 FT)
ADD 3 1/2" MAG NAIL RIGHT SIDE CENTER

Monument Set (Procedure and Description)

MONUMENT DETAIL

Horizontal lines for Monument Set description.

New Accessories

Horizontal lines for New Accessories description.

Sketch of Monument, Accessories, and General Area

Location & Comments

OCRS COORDINATES
Cottage Grove - Canyonville
Zone

N 35648.430

E 122887.456

Comp. Decline. 14 1/2° E
Agency DCSO
Party Chief S. F. HUSE
Note keeper
Witnesses J. Larson

CS 67140-20 pg 2/7

REGISTERED
PROFESSIONAL
LAND SURVEYOR

Ronald A. Quimby

OREGON
JULY 14, 1978
RONALD A. QUIMBY
1654

EXPIRES: 12/31/2026

378

16242

Dependent Resurvey, Portion of Subdivisional Lines,
T. 30 S., R. 7 W., Willamette Meridian, Oregon

MIMI GIS
42.91730
123.48693

CHAINS

Beginning at the cor. of secs. 1, 2, 35, and 36, on the S. bdy. of the Tp., monumented with an iron post, 2½ ins. diam., firmly set, projecting 4 ins. above ground, with brass cap mkd.

T 30 S R 7 W
S 35 | S 36
S 2 | S 1
T 31 S
1977
1969

from which bearing trees mkd. by Jelley, in 1977

A cedar, 25 ins. diam., bears N. 24½° E., 75 lks. dist., with scribe marks T30S R7W S36 BT visible on open blaze.

A cedar, 18 ins. diam., bears S. 41° E., 59 lks. dist., with scribe marks T31S R7W S1 BT visible on open blaze.

A cedar, 7 ins. diam., bears S. 58½° W., 48½ lks. dist., with scribe marks T31S R7W S2 BT visible on open blaze.

A cedar, 11 ins. diam., bears N. 59½° W., 71 lks. dist., with scribe marks T30S R7W S35 BT visible on open blaze.

N. 4° 16' W., bet. secs. 35 and 36, marking and blazing the true line.

Descend 15 ft. over NW. slope, through scattering timber and dense undergrowth.

1.50 Creek, 5 lks. wide, course N. 40° E.; asc. 10 ft. over SE. slope.

3.15 Spur, slopes N. 50° E.; desc. 50 ft. over NE. slope.

16.50 Cow Creek, 150 lks. wide, course S. 30° E.; asc. 45 ft. over SW. slope.

20.10 Top of ascent, slopes SW.; continue over nearly level land.

567 1/2 E, 363

20.505 Point for the S 1/16 sec. cor. of secs. 35 and 36.

Set an iron post, 28 ins. long, 2½ ins. diam., flush with the surface of the ground, with brass cap mkd.

S 1/16
S 35 | S 36
1977

from which

A pine, 7 ins. diam., bears S. 87½° E., 113½ lks. dist., mkd. S 1/16 S36 BT.

A basalt boulder, 5 x 5 x 3 ft. above ground, bears S. 26½° W., 31 lks. dist., mkd. X 80 on top.

Continue over nearly level land.

CS 67/60-20 pg 2/7

M112-52

MARK SPALLEY 1992

30-7-600120

600120

30648.630 N ←

122887.456 E

DONT KNOW
IF THIS WAS
THE POSITION WE DECIDED TO USE

SCRIBED: 7" OAK N 23°W 12.7

1/4 S35 BT

T305-R7W-600120 DECLINATION 14 1/2° E

10

RENEWED 4/2/25

4 S 1/16 CORNER 35 | 36
Fd 1977. CADASTRAL BEIP CAP GONE 2" I.P.P. 15" BELOW SURFACE

REFS AND BTs: 5'X5'X3' BOULDER/S 26 3/4"W 20.5V
MARKED "X BO"

GONE 7" PINE S 87 3/4° E 74.91' ROTTEN LOST TO RD. REALIGN

SCRIBED: 17" FIR S 26° E 55.8" S 1/16 S36 BT FH5B

27"

55 ± ADD 3 1/2" MAG NAIL R.S.C.

11

5 SW 1/16 CORNER SECTION 36
SET 5/8" X 48" IRON ROD & ALUM CAP

SCRIBED: 5" CEDAR N 26°W 12.0" SW 1/16 BT

57" PINE N 50°E 8.0" SW 1/16 BT

6 W 1/16 CORNER 36

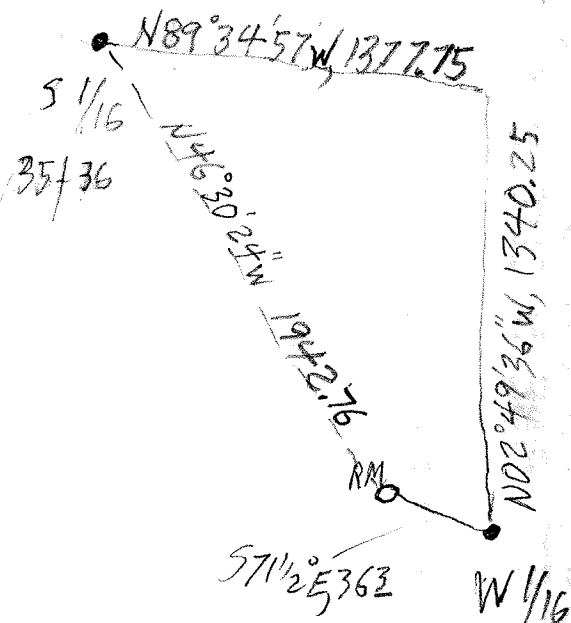
CS 67/60-20

pg 4/7

620100

29157.727

12 44 11.928



RM 29157.727
 124411.928

RM PLM - 5/8
 N39°39'48" W, 53.93

CS 67/100-20 pg 5/7

