

GOVERNMENT CORNER RESTORATION FORM

FILED

TOWNSHIP 31S RANGE 9W SEC. 10 PLSS # 500360

Date: 2/5/2025 By: KE
This survey consists of:

DOUGLAS COUNTY OREGON

DATE 2-3-25

Map: _____

Narrative: _____

Corner Rpt: CS (67) 59-58

Corner Designation

N 1/4 10/11

DOUGLAS COUNTY
SURVEYOR

Monument(s) Found: (Condition and Source)

5/8" I. Rod with 2" Alum
Cap up 0.4 FT

___ Condition report

___ Not Found

Renewed

___ Unrecorded

___ Surveyed In

Previous Renewals

Established by Sweeden
per M 141-39

MONUMENT DETAIL

Accessories Found

11" D. Fir N 70°E 11.35 FT Fully Healed
Double BLAZE ADD 3 1/2" MAG NAIL
RIGHT Side Center

11" D. Fir S 47°E 24.33 FT Fully Healed
Double BLAZE ADD 3 1/2" MAG NAIL
RIGHT Side Center

Steel Post 10 FT westerly

Monument Set (Procedure and Description)

MONUMENT DETAIL

New Accessories

Sketch of Monument, Accessories, and General Area

Location & Comments

OCRS Coordinates
 Cottage Grove - Canyonville
 Zone

2 OF GRAVE
 ROAD IS NORTH
 50' ±

N 22094.914
 E 54622.745

Comp. Decline. 14 1/2° E
 Agency DCSO
 Party Chief S. F. Huse
 Note keeper
 Witnesses J. LORSUNG

CS 67159-58 pg 2/4



EXPIRES: 12/31/2026

15" D. FIR BT, S 55° E 24.95' "W 1/16 S15 BT", TAG
18" D. FIR BT, WEST 8.18', "W 1/16 S15 BT", TAG
STEEL POST 1.0 EAST

CW 1/16

SET 5/8" I. ROD W/ 2" ALUM. CAP UP 0.3'
"CW 1/16 S10 PLS 2752", PUNCHED
4" D. FIR BT, S 7° W 7.15' "CW 1/16 S10 BT", TAG
4" D. FIR BT, N 34° W 5.30', "CW 1/16 S15 BT", TAG
STEEL POST 1.0 EAST

N 1/16

SET 5/8" I. ROD W/ 2" ALUM. CAP UP 0.4'
"N 1/16 S10 PLS 2752", PUNCHED
17" HEMLOCK BT, N 75° E 2.5' "N 1/16 S10 BT", TAG
23" HEMLOCK BT, S 18° E 21.00', "N 1/16 S10 BT", TAG
STEEL POST 1.0 SOUTH
BOTH THESE TREES HAD BT TAGS BUT NO SCRIBE SCAR
AND NOT OF RECORD. TAGS LOCATED 2 SEPERATE POSITIONS

CN 1/16

SET 5/8" I. ROD W/ 2" ALUM. CAP UP 0.4'
"CN 1/16 S10 PLS 2752", PUNCHED
4" D. FIR BT, N 52° E 16.30' "CN 1/16 S10 BT", TAG
4" D. FIR BT, N 82 1/2° W 8.20', "CN 1/16 S10 BT", TAG
STEEL POST 1.0 EAST **T315, R9W, 500560**

N 1/16

SET 5/8" I. ROD W/ 2" ALUM. CAP UP 0.4' **BOTH B.T.S**
"N 1/16 S10 PLS 2752", PUNCHED **ADD 3 1/2" MAG NAIL R.S.C.**
11" 5" D. FIR BT, N 7° E 1.85' "N 1/16 S11 BT", TAG **FHDB**
11" 5" D. FIR BT, S 47° E 24.38', "N 1/16 S11 BT", TAG
STEEL POST 1.0 WEST

DECLINATION 14 1/2 E

S10 S11

E OF GRAVEL RD. IS NORTH ~ 50 FT.

2-3-25

LEGEND:

- FD GOVERNMENT CORNER (SEE CORNER NOTES)
- SET 5/8" X 30" IRON ROD W/ 2" ALUMINUM CAP MARKED AS NOTED
- ▲ COMPUTED POINT, NOTHING FOUND OR SET
- () RECORD PER M20-16

SW 1/4, THE SE 1/4, THE NORTH 1/2 OF THE NW 1/4 AND
VERSE WAS COMPLETED TO TIE THE FOUND CONTROLLING
NORTH AND EAST 1/4 CORNERS. WITH THIS COMPLETED THE
OF INSTRUCTION. THE SOUTH 1/4 CORNER WAS SEARCHED
HAS DISTROYED ANY TRACE OF THE ORIGINAL BEARING
THER CREEK AND PANTHER RIDGE WITH A DISTANCE
SOUTH 1/4 CORNER WAS THEN COMPUTED BY USING
DOWN.

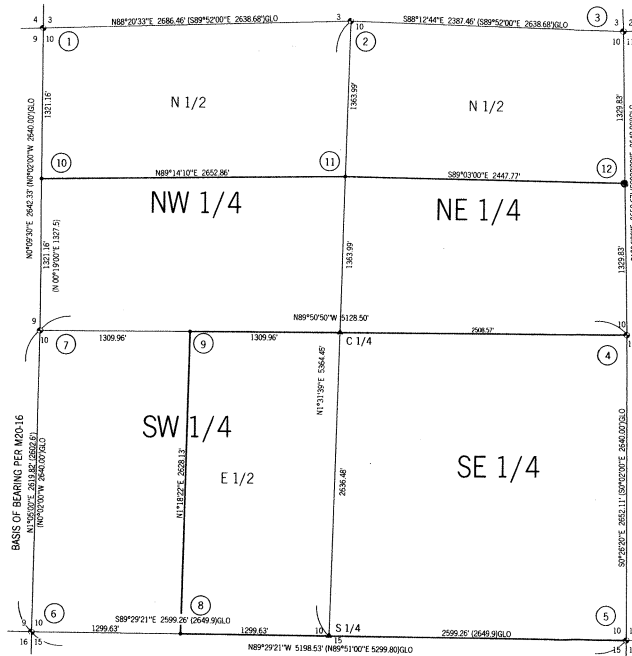
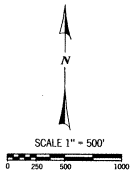
NG TIED PER SURVEY M20-16 HOWEVER INSPECTION OF THE
WITH BEARING TREE TAGS ATTACHED. THE POSITION OF
ID BOTH THOSE AREAS WERE SEARCHED. RESEARCH OF
DOLLAR COMPANY OF GLENDALE, NOW SUPERIOR, AND A
60. CONTACT WITH SUPERIOR LUMBER HAS RETURNED
ER THE TAG OR ANY SURVEY FIELD NOTES. THE POSITION
ES SHOWN IN BOLD WERE RAN, POSTED, BLAZED, PAINTED

*MINI GIS
42.89324
123.74139*

*OCRS CANYONVILLE COTTAGE GROVE CORNER
22094.914 N
54622.745 E*

CS 67/59-58 pg 3/4

BOUNDARY SURVEY IN SECTION 10, T. 31 S., R. 9 W., W. M. DOUGLAS COUNTY, OREGON - JANUARY 2003



- N 1/4**
- 2 1/2" BC UP 1.65' ON NORTH SIDE OF HEMLOCK COR. TREE
 - 2" HEMLOCK COR. TREE NOW 13" W/ OPEN FACE & TAG
 - 16" HEMLOCK BT STUMP 5.0' TALL, N 63° W 6.6', BARK GONE, SCRIBE VS. METAL ON TOP
 - 12" NOW 18" HEMLOCK BT N 42° E 30.4' W/ SPIKE TOP, OPENED BUT NO SCRIBE VS. DBL. BLAZE
- NE COR. S 10**
- 2 1/2" BC UP 1.10'
 - 18" NOW 13" D. FIR BT STOB 10' TALL, S 30° E 16.5' W/ OPEN FACE, SOME SCRIBE VS. NO BARK
 - 18" NOW 15" D. FIR BT STOB 10' TALL, S 30° E 23.4', NO BARK, SCAR VISIBLE
 - 28" D. FIR BT NOW UNROOTED STUMP, N 40° W 30.4' TO ROOT HOLE
 - 36" NOW 39" D. FIR UNROOTED STUMP, S 5° W 25.1' TO ROOT HOLE
- NEW**
- E 1/4**
- 2 1/2" BC UP 0.70'
 - 22" D. FIR BT NOW DOWN, N 71° W 94.9' TO ROOT HOLE, SCRIBE VS. TAG
 - 22" D. FIR STUMP 3.6' TALL, S 19° E 56.3', METAL CAP, NO BARK, SCAR VS. TAG
- NEW**
- SW COR. S 10**
- 2 1/2" BC UP 0.80'
 - 10" NOW 12" YEW BT, N 68° E 14.5, SCAR, PARTLY DEAD, TAG
 - 8" D. FIR BT, S 39° E 42.5', HEALED
 - 6" D. FIR BT, S 88° W 7.0', SCRIBED "E 1/4 S 10 BT" & TAG
 - STEEL POSTS 1.0' WEST OF BC
- SE COR. S 10**
- 10" NOW 12" YEW BT, N 68° E 14.5, SCAR, PARTLY DEAD, TAG
 - 22" CEDAR BT NOW 22" S 59° E 35.0', HEALED DBL. BLAZE, TAG
 - 18" D. FIR BT NOW 31" N 56 1/2° W 39.9', TREE TALL, SCAR, NO TAG
 - 11" YEW BT NOW 14" N 79° E 14.5', SCRIBE VS. TAG
 - SET STEEL POST 1.0' WEST OF BC
- SW COR. S 10**
- 2 1/2" BC UP 0.50 W/ 3/4" I. PIPE ALONG SIDE
 - 40" D. FIR BT, S 39° E 42.5', HEALED
 - 18" ROOTED D. FIR S 40° W 31.1', 7.0' TALL
 - 40" D. FIR BT AT 5 7/8" W 25.8' NOW GONE, FOUND ROOT HOLE
 - 54" D. FIR BT, S 80° E 34.0', HEALED W/ TAG
 - 50" D. FIR STUMP, N 88° E 38.9', "C" CARVED IN TOP, TAG
 - 5" D. FIR NOW 9", N 57° W 20.9', HEALED DBL. BLAZE
- W 1/4**
- 2 1/2" BC UP 1.0' W/ 3/4" I. PIPE ALONG SIDE
 - 24" D. FIR BT STUMP, N 26° E 13.2'
 - 8" D. FIR BT IN SW NOW GONE
 - 14" D. FIR BT, N 39° E 42.5' IS STUMP LAYING OVER THE TO ROOT HOLE
 - 8" W. FIR BT NOW 23", N 12° W 19.3', CHOCKED, SCAR VS.
 - NEW
 - 8" D. FIR BT, S 50° E 12.99', SCRIBED "E 1/4 S 10 BT" & TAG
 - 8" D. FIR BT, S 49° E 8.77', SCRIBED "W 1/4 S 10 BT" & TAG
- W 1/16**
- 8" D. FIR BT, S 50° E 7.89', SCRIBED "W 1/4 S 11 BT" & TAG
 - 7" D. FIR BT, S 80° E 5.0', SCRIBED "W 1/4 S 11 BT" & TAG
 - 6" D. FIR BT, S 88° W 7.0', SCRIBED "E 1/4 S 10 BT" & TAG
 - STEEL POSTS 1.0' WEST OF BC
- N 1/16**
- SET 5/8" I. ROD W/ 2" ALUM. CAP UP 0.4'
 - 1" HEMLOCK BT, N 75° E 2.5" "N 1/16 S 10 BT", TAG
 - 22" HEMLOCK BT, S 18° E 51.00", "N 1/16 S 10 BT", TAG
 - STEEL POST 1.0' SOUTH
 - BOTH THESE TREES HAD BT TAGS BUT NO SCRIBE SCAR AND NOT OF RECORD, TAGS LOCATED 2 SEPARATE POSITIONS
- CW 1/16**
- SET 5/8" I. ROD W/ 2" ALUM. CAP UP 0.3'
 - "CW 1/16 S 10 PLS 2752", PUNCHED
 - 4" D. FIR BT, S 7° W 15.19" "CW 1/16 S 10 BT", TAG
 - 4" D. FIR BT, N 34° W 15.90", "CW 1/16 S 10 BT", TAG
 - STEEL POST 1.0' EAST
- N 1/16**
- SET 5/8" I. ROD W/ 2" ALUM. CAP UP 0.4'
 - "N 1/16 S 10 PLS 2752", PUNCHED
 - 1" HEMLOCK BT, N 75° E 2.5" "N 1/16 S 10 BT", TAG
 - 22" HEMLOCK BT, S 18° E 51.00", "N 1/16 S 10 BT", TAG
 - STEEL POST 1.0' SOUTH
 - BOTH THESE TREES HAD BT TAGS BUT NO SCRIBE SCAR AND NOT OF RECORD, TAGS LOCATED 2 SEPARATE POSITIONS
- CN 1/16**
- SET 5/8" I. ROD W/ 2" ALUM. CAP UP 0.4'
 - "CN 1/16 S 10 PLS 2752", PUNCHED
 - 4" D. FIR BT, N 52° E 16.30" "CN 1/16 S 10 BT", TAG
 - 4" D. FIR BT, N 82 1/2° W 8.20", "CN 1/16 S 10 BT", TAG
 - STEEL POST 1.0' EAST
- N 1/16**
- SET 5/8" I. ROD W/ 2" ALUM. CAP UP 0.4'
 - "N 1/16 S 10 PLS 2752", PUNCHED
 - 5" D. FIR BT, N 7° E 11.85" "N 1/16 S 11 BT", TAG
 - 5" D. FIR BT, S 41° E 24.90", "N 1/16 S 11 BT", TAG
 - STEEL POST 1.0' WEST

NARRATIVE:
THIS SURVEY WAS COMPLETED TO ESTABLISH THE EAST 1/2 OF THE SW 1/4, THE SE 1/4, THE NORTH 1/2 OF THE NW 1/4 AND THE NORTH 1/2 OF THE NE 1/4 OF SECTION 10 AS WELL AS THE WEST, NORTH AND EAST 1/4 CORNERS. WITH THIS COMPLETED THE SECTION WAS BROKEN DOWN IN ACCORDANCE TO THE 1973 MANUAL OF INSTRUCTION. THE SOUTH 1/4 CORNER WAS SEARCHED FOR BUT THIS AREA HAVING BEEN LOST OVER MANY YEARS BACK HAS DESTROYED ANY TRACE OF THE ORIGINAL BEARING TREES. CALLS IN THE ORIGINAL NOTES WERE CHECKED AGAINST PANTHER CREEK AND PANTHER RIDGE WITH A DISTANCE DISCREPANCY NOTED MAKING THE NOTES SOMEWHAT SUSPECT. THE SOUTH 1/4 CORNER WAS THEN COMPUTED BY USING PROPORTIONING AND THAT POSITION HELD FOR THE SECTION BREAKDOWN.

THE NORTH 1/4 CORNER OF SECTION 9 AND 10 WAS SHOWN AS BEING TIED PER SURVEY M20-16 HOWEVER INSPECTION OF THE AREA FAILED TO TURN UP ANY MONUMENT. TWO TREES WERE FOUND WITH BEARING TREE TAGS ATTACHED. THE POSITION OF THE N 1/4 CORNER FOR EACH TAG TELL IN SEPARATE LOCATIONS AND BOTH THESE AREAS WERE SEARCHED. RESEARCH OF THE NAME, "W. OWEN", GIVEN ON ONE OF THE TAGS LED TO ROBERT DOLLAR COMPANY OF GLENDALE, NOW SUPERIOR, AND A LETTER PER CS 51,688 REGARDING SURVEY WORK IN SECTION 10 IN 1960. CONTACT WITH SUPERIOR LUMBER HAS RETURNED NO RESULTS OF A MONUMENT PLAZED AT THE INTENDED POSITION FOR THE TAG OR ANY SURVEY FIELD NOTES. THE POSITION OF THE N 1/16, SEC. 9 & 10 WAS THEN HELD AS COMPUTED. THE LINES SHOWN IN BOLD WERE BARN, POSTED, BLAZED, PAINTED AND FLAGGED AS REQUESTED BY THE OWNER.

FIELD CREW: C. SWEEDEN, E. WILDS AND G. STACY
MAPPING AND COMPUTATIONS: C. SWEEDEN
EQUIPMENT USED: NIKON DTM-501 W/ SUPPORT

SURVEY FOR:
SUPERIOR LUMBER COMPANY
2695 GLENDALE VALLEY ROAD
GLENDALE, OREGON 97442

REGISTERED PROFESSIONAL LAND SURVEYOR
CARL A. SWEEDEN
2752
JANUARY 16, 1996
EXPIRES 6-30-04

Sweeden Land Surveying
Carl A. Sweeden
P.L.S.
5211 Oak Road
Oreland, Or. 97462
Tel. 541-499-9523

FILED
Date: 1/13/2003 By: J.P.
This survey consists of:
Map: M/L/H-39
Neit:
Corner Hgt:
DOUGLAS COUNTY
SURVEYOR

MAP FILE M/L/H-39

CS 67159-58 PG 4/4