

GOVERNMENT CORNER RESTORATION FORM

FILED

TOWNSHIP 26S RANGE 3W SEC. 30

PLSS # 120253

Date: 10/2/2024 By: JC  
This survey consists of:

DOUGLAS COUNTY OREGON

DATE 9-19-24

Map: \_\_\_\_\_

Narrative: \_\_\_\_\_

Corner Rpt: CS 67/59-5

Corner Designation:

CS NW 1/4

DOUGLAS COUNTY  
SURVEYOR

Monument(s) Found: (Condition and Source)

2 1/2" Alum Cap on 5/8"  
Iron Rod Proj 3"

\_\_\_ Condition report

\_\_\_ Not Found

Renewed

\_\_\_ Unrecorded

\_\_\_ Surveyed In

Previous Renewals

Set by Hoffinc 2007  
M 154-16

MONUMENT DETAIL

Lone Rock Timber  
CS NW 1/4  
S 30  
2007  
PLS 2291

Accessories Found

Singed SAWN 15" X 7 FT D. FIR STUMP  
S 2 1/2° E 12.38 FT Fully Healed Single  
BLAZE ADD 3 1/2" MAG NAIL RIGHT SIDE CENTER

BURNED SAWN 26" X 5 FT D. FIR STUMP N 29 1/2° E  
30.1 FT Fully Healed Single BLAZE ADD  
3 1/2" MAG NAIL RIGHT SIDE CENTER

SAWN 17" X 7 FT D. FIR STUMP N 52° E  
57.3 FT Fully Healed Single BLAZE  
ADD 3 1/2" MAG NAIL RIGHT SIDE CENTER

Fence Post 0.5 FT North  
Fence Built to South E.T. FENCES RUN  
South & East

C.S. File CS 67/59-5

Monument Set (Procedure and Description)

MONUMENT DETAIL

Horizontal lines for Monument Set description.

New Accessories

Horizontal lines for New Accessories description.

Sketch of Monument, Accessories, and General Area

Location & Comments

OCRS Coordinate System  
Cottage Grove - Canyonville  
Zone

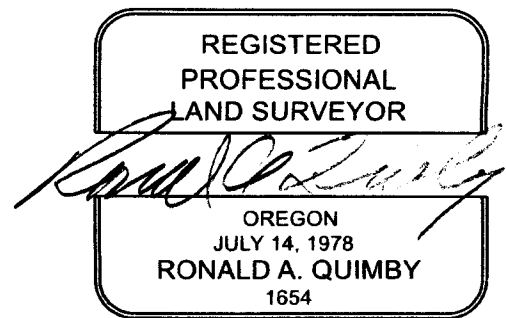
MON ON FLAT BENCH  
APPROX 150 FT EAST  
OF GRAVEL ROAD

AREA BURNED  
9/2020

N 195390.213  
E 224860.513

Comp. Decline. 14 1/4° E  
Agency DCSO  
Party Chief S. F. HUSE  
Note keeper  
Witnesses J. LORSUMBY

CS 67/59-5  
2/4



EXPIRES: 12/31/2024

RENEWED 9/18/24  
DECLINATION 14 1/4° E

(10) OCRS CANYONVILLE COTTAGE GROVE CORNERS  
196305.539 N  
226186.687 E

BURNED SAUN D. FIR STAMP 19" X 4 FT -  
" " " " 24" X 5 1/2 FT -

RENEWED 9/19/24  
DECLINATION 14 1/4° E

(12) OCRS CANYONVILLE COTTAGE GROVE CORNERS  
195390.213 N  
224860.513 E

FIRE SINGED SAUN 15" X 7 FT. D. FIR STUMP -  
BURNED SAUN 26" X 5 FT. D. FIR STAMP -  
SAUN 17" X 7 FT. D. FIR STAMP -

RENEWED 9/19/24  
DECLINATION 14 1/4° E

(13) OCRS CANYONVILLE COTTAGE GROVE CORNERS  
193262.102 N  
224250.962 E

BURNED SAUN D. FIR STAMP 17" X 5 FT.  
BURNED SAUN D. FIR STAMP 13" X 5 FT.  
(BOTH BT'S) 556° E  
(HUB 1348) N 76° E  
(BEARINGS) N 76° E

PLUS 2291 0.3 FEET ABOVE GROUND ON STEEP WESTERLY FACING SLOPE APPROXIMATELY 425 FEET WEST OF RIDGE LINE. PLACED A IRON FENCE POST 0.5 FEET NORTH OF THE CORNER

-10" DOUGLAS FIR BEARS S 8 1/2° W 29.5 FEET WE SCRIBED CE 1/16 S30 BT AND TAGGED TREE

-20" DOUGLAS FIR BEARS N 21° E 37.2 FEET WE SCRIBED CE 1/16 S30 BT AND TAGGED TREE

(9) THE NE 1/16 OF SECTION 30  
SET 5/8" X 40" IRON ROD WITH A 2 1/2" ALUMINUM CAP MARKED LONE ROCK TIMBER NE 1/16 S30 2007 PLUS 2291 0.3 FEET ABOVE GROUND ON A STEEP NORTH FACING SLOPE APPROXIMATELY 60 FEET NORTH OF A SMALL CLEAR CUT. PLACED A IRON FENCE POST 0.5 FEET TO THE NORTH OF THE CORNER

-20" DOUGLAS FIR BEARS S 33° W 17.9 FEET WE SCRIBED NE 1/16 S30 BT AND TAGGED TREE

-16" DOUGLAS FIR BEARS N 42 3/4° W 20.5 FEET WE SCRIBED NE 1/16 S30 BT AND TAGGED TREE

(10) THE CN 1/16 OF SECTION 30 *Cap AND I.R. AS DESCRIBED; WIRE FENCE GRAN 20" 2 FT = 20" FIR FENCE RUN*  
SET 5/8" X 40" IRON ROD WITH A 2 1/2" ALUMINUM CAP MARKED LONE ROCK TIMBER CN 1/16 S30 2007 SOUTH EAST CORNER

PLUS 2291 0.3 FEET ABOVE GROUND ON A FLAT RIDGE TOP THAT BEARS N 64° W. PLACED A IRON FENCE POST 0.5 FEET TO THE NORTH OF THE CORNER

-18" DOUGLAS FIR BEARS S 21 1/2° W 23.8 FEET WE SCRIBED CN 1/16 S30 BT AND TAGGED TREE *FHSB*

-22" DOUGLAS FIR BEARS S 49° E 42.8 FEET WE SCRIBED CN 1/16 S30 BT AND TAGGED TREE *FHSB*

(11) THE CSN 1/64 OF SECTION 30 *ADD 3 1/2" MAG NAILS R5CTO BT'S*  
SET 5/8" X 40" IRON ROD WITH A 2 1/2" ALUMINUM CAP MARKED LONE ROCK TIMBER CSN 1/64 S30 2007 PLUS 2291 0.3 FEET ABOVE GROUND ON A GENTLE WEST FACING SLOPE. PLACED A IRON FENCE POST 0.5 FEET TO THE NORTH OF THE CORNER

-25" DOUGLAS FIR BEARS S 29° W 34.5 FEET WE SCRIBED CSN 1/64 S30 BT AND TAGGED TREE

-20" DOUGLAS FIR BEARS N 49 1/2° E 35.3 FEET WE SCRIBED CSN 1/64 S30 BT AND TAGGED TREE

(12) THE CSNW 1/64 OF SECTION 30 *Cap AND I.R. AS DESCRIBED; WIRE FENCE BUILT TO SOUTH BT FENCES RUN*  
SET 5/8" X 40" IRON ROD WITH A 2 1/2" ALUMINUM CAP MARKED LONE ROCK TIMBER CSNW 1/64 S30 2007 SOUTH PLUS 2291 0.2 FEET ABOVE GROUND ON A FLAT BENCH APPROXIMATELY 150 FEET EAST OF GRAVEL AND EAST ROAD. PLACED A IRON FENCE POST 0.5 FEET TO THE NORTH OF THE CORNER

-12" DOUGLAS FIR BEARS S 2 1/2° E 12.38 FEET WE SCRIBED CSNW 1/64 S30 BT AND TAGGED TREE *FHSB*

-23" DOUGLAS FIR BEARS N 29 1/2° E 30.1 FEET WE SCRIBED CSNW 1/64 S30 BT AND TAGGED TREE *FHSB*

(13) THE DOUGLAS FIR BEARS N 52° E 57.3 FEET WE SCRIBED CSNW 1/64 S30 BT AND TAGGED TREE *FHSB*

(14) THE CW 1/16 OF SECTION 30 *ADD 3 1/2" MAG NAILS R5CTO BT'S*  
SET 5/8" X 40" IRON ROD WITH A 2 1/2" ALUMINUM CAP MARKED LONE ROCK TIMBER CW 1/16 S30 2007 PLUS 2291 0.4 FEET ABOVE GROUND ON A GENTLE SOUTH FACING SLOPE APPROXIMATELY 2 FEET EAST OF OLD FENCE LINE PLACED A IRON FENCE POST 0.5 TO THE NORTH OF THE CORNER.

-12" CEDAR BEARS S 61° W 8.4 FEET WE SCRIBED CW 1/16 S30 BT AND TAGGED TREE

-15" CEDAR BEARS N 71° E 57.5 FEET WE SCRIBED CW 1/16 S30 BT AND TAGGED TREE

(15) THE SW 1/16 OF SECTION 30  
SET 5/8" X 40" IRON ROD WITH A 2 1/2" ALUMINUM CAP MARKED LONE ROCK TIMBER SW 1/16 S30 2007 PLUS 2291 0.4 FEET ABOVE GROUND ON FLAT BENCH APPROXIMATELY 1.5 FEET EAST OF OLD FENCE LINE. PLACED A IRON FENCE POST 0.5 FEET TO THE NORTH OF THE CORNER.

-11" DOUGLAS FIR BEARS N 10° W 32.7 FEET WE SCRIBED SW 1/16 S30 BT AND TAGGED TREE

-16" DOUGLAS FIR BEARS S 41 1/2° W 20.4 FEET WE SCRIBED SW 1/16 S30 BT AND TAGGED TREE

(16) THE CWSW 1/64 OF SECTION 30 *Cap AND I.R. AS DESCRIBED; SEE BELOW FOR FENCE COR (STREAM IS SEASONAL)*  
SET 5/8" X 40" IRON ROD WITH A 2 1/2" ALUMINUM CAP MARKED LONE ROCK TIMBER CWSW 1/64 S30 2007 PLUS 2291 0.3 FEET ABOVE GROUND. A SMALL SOUTHERLY FLOWING STREAM LIES 1 FOOT TO THE WEST OF THE CORNER. PLACED A IRON FENCE POST 0.5 FEET TO THE NORTH OF THE CORNER. IRON POST GONE

-15" DOUGLAS FIR 9-76° W 25.3 FEET WE SCRIBED CWSW 1/64 S30 BT AND TAGGED TREE *FHSB*

(16) THE WW 1/64 OF SECTION 30 *ADD 3 1/2" MAG NAILS L.S.C. TO BT'S (RIGHT SIDE NOT PRACTICAL)*  
SET 5/8" X 40" IRON ROD WITH A 2 1/2" ALUMINUM CAP MARKED LONE ROCK TIMBER WW 1/64 S30 2007 PLUS 2291 0.2 FEET ABOVE GROUND ON A GENTLE SOUTH FACING SLOPE. THE CORNER LIES IN THREAD OF A SMALL DRAW IN MATURE SECOND GROWTH TIMBER. PLACED A IRON FENCE POST 0.5 FEET TO THE NORTH OF THE CORNER.

-14" DOUGLAS FIR BEARS S 87° E 24.3 FEET WE SCRIBED WW 1/64 S30 BT AND TAGGED TREE

-18" DOUGLAS FIR N 75° E 12.9 FEET WE SCRIBED WW 1/64 S30 BT AND TAGGED TREE

(15) MONUMENT DESCRIPTION CONT'D  
A STEEL LATH IS ~ N110° E, 1 FT. DISTANT  
A 5" DIAM. WOOD CORNER POST IS ~ N50° E, 0 1/2 FT. DISTANT  
WIRE FENCES RUN EAST AND SOUTH

# LONE ROCK TIMBERLAND CO.

SECTION 30 T. 25 S., R. 3 W., W.M.

DOUGLAS COUNTY, OREGON

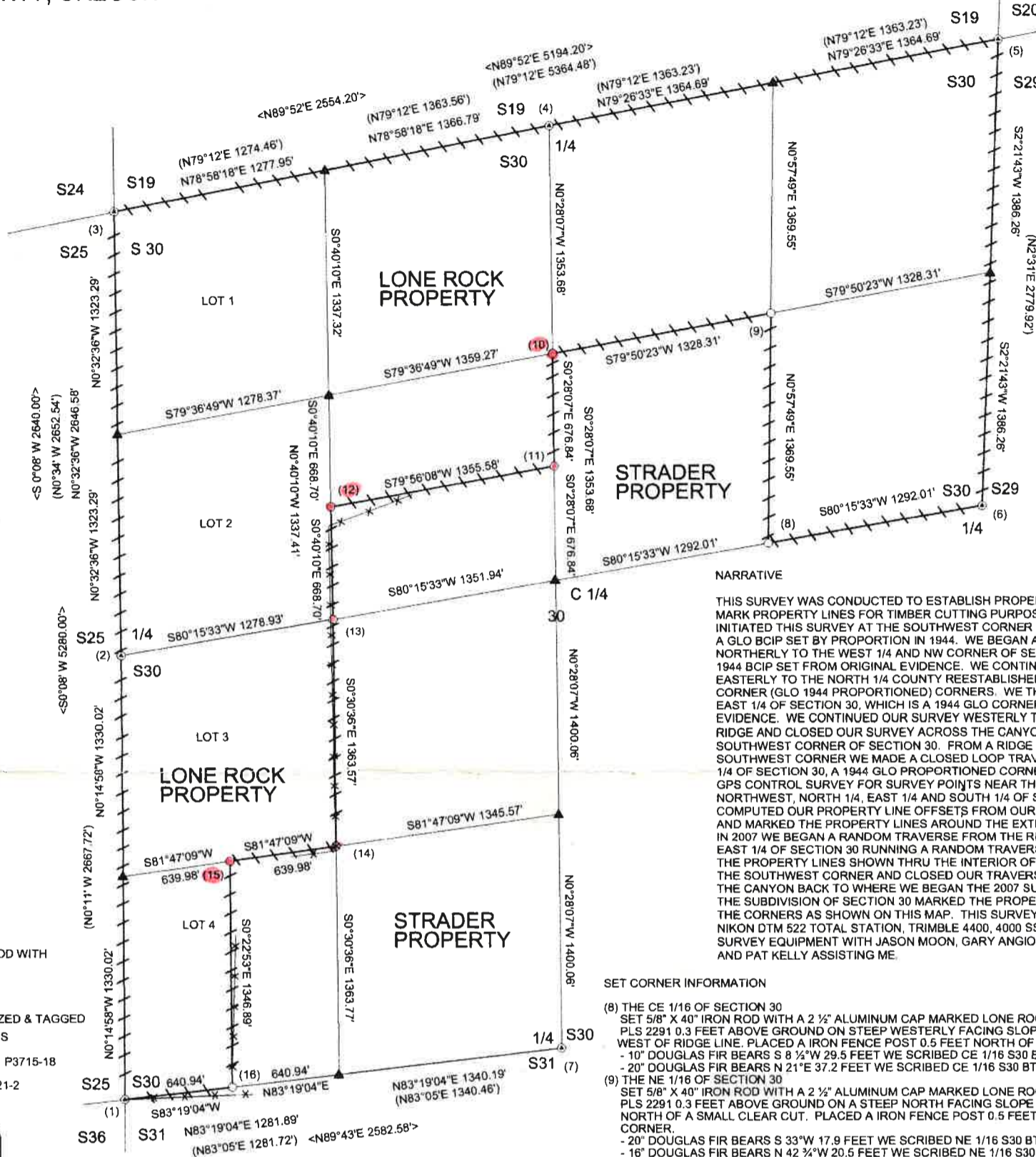
SURVEYED: BY LONE ROCK TIMBER MANAGEMENT CO.

PO BOX 1127 ROSEBURG, OREGON 97470

TRACT NAME: MT. SCOTT #6

FILED  
Date: 9/17/2007 By: JC  
This survey consists of:  
Map: M154-16  
Narrative:  
Corner Rpt:

DOUGLAS COUNTY  
SURVEYOR



### NARRATIVE

THIS SURVEY WAS CONDUCTED TO ESTABLISH PROPERTY CORNERS AND MARK PROPERTY LINES FOR TIMBER CUTTING PURPOSES. IN 2005, WE INITIATED THIS SURVEY AT THE SOUTHWEST CORNER OF SECTION 30 A GLO BCIP SET BY PROPORTION IN 1944. WE BEGAN A RANDOM TRAVERSE NORTHERLY TO THE WEST 1/4 AND NW CORNER OF SECTION 30 WHICH ARE 1944 BCIP SET FROM ORIGINAL EVIDENCE. WE CONTINUED OUR TRAVERSE EASTERLY TO THE NORTH 1/4 COUNTY REESTABLISHED 1966 AND NORTHWEST CORNER (GLO 1944 PROPORTIONED) CORNERS. WE THEN SURVEYED TO THE EAST 1/4 OF SECTION 30, WHICH IS A 1944 GLO CORNER SET FROM ORIGINAL EVIDENCE. WE CONTINUED OUR SURVEY WESTERLY TO THE TOP OF THE RIDGE AND CLOSED OUR SURVEY ACROSS THE CANYON BACK TO THE SOUTHWEST CORNER OF SECTION 30. FROM A RIDGE ABOVE THE SAME SOUTHWEST CORNER WE MADE A CLOSED LOOP TRAVERSE TO THE SOUTH 1/4 OF SECTION 30, A 1944 GLO PROPORTIONED CORNER. WE THEN RAN A GPS CONTROL SURVEY FOR SURVEY POINTS NEAR THE SOUTHWEST, NORTHWEST, NORTH 1/4, EAST 1/4 AND SOUTH 1/4 OF SECTION 30. WE COMPUTED OUR PROPERTY LINE OFFSETS FROM OUR RANDOM TRAVERSES AND MARKED THE PROPERTY LINES THRU THE INTERIOR OF SECTION 30 BACK TO THE SOUTHWEST CORNER AND CLOSED OUR TRAVERSE WITH A SHOT ACROSS THE CANYON BACK TO WHERE WE BEGAN THE 2007 SURVEY. WE COMPUTED THE SUBDIVISION OF SECTION 30 MARKED THE PROPERTY LINES AND SET THE CORNERS AS SHOWN ON THIS MAP. THIS SURVEY WAS DONE WITH A NIKON DTM 522 TOTAL STATION, TRIMBLE 4400, 4000 SSE AND 4000 SE SURVEY EQUIPMENT WITH JASON MOON, GARY ANGIOLET, IGNACIO ROMAN AND PAT KELLY ASSISTING ME.

### SET CORNER INFORMATION

- (8) THE CE 1/16 OF SECTION 30  
SET 5/8" X 40" IRON ROD WITH A 2 1/2" ALUMINUM CAP MARKED LONE ROCK TIMBER CE 1/16 S30 2007 PLS 2291 0.3 FEET ABOVE GROUND ON STEEP WESTERLY FACING SLOPE APPROXIMATELY 425 FEET WEST OF RIDGE LINE. PLACED A IRON FENCE POST 0.5 FEET NORTH OF THE CORNER  
- 10" DOUGLAS FIR BEARS S 8 1/2° W 29.5 FEET WE SCRIBED CE 1/16 S30 BT AND TAGGED TREE  
- 20" DOUGLAS FIR BEARS N 21° E 37.2 FEET WE SCRIBED CE 1/16 S30 BT AND TAGGED TREE
- (9) THE NE 1/16 OF SECTION 30  
SET 5/8" X 40" IRON ROD WITH A 2 1/2" ALUMINUM CAP MARKED LONE ROCK TIMBER NE 1/16 S30 2007 PLS 2291 0.3 FEET ABOVE GROUND ON A STEEP NORTH FACING SLOPE APPROXIMATELY 60 FEET NORTH OF A SMALL CLEAR CUT. PLACED A IRON FENCE POST 0.5 FEET TO THE NORTH OF THE CORNER.  
- 20" DOUGLAS FIR BEARS S 33° W 17.9 FEET WE SCRIBED NE 1/16 S30 BT AND TAGGED TREE  
- 16" DOUGLAS FIR BEARS N 42 1/2° W 20.5 FEET WE SCRIBED NE 1/16 S30 BT AND TAGGED TREE
- (10) THE CN 1/16 OF SECTION 30  
SET 5/8" X 40" IRON ROD WITH A 2 1/2" ALUMINUM CAP MARKED LONE ROCK TIMBER CN 1/16 S30 2007 PLS 2291 0.3 FEET ABOVE GROUND ON A FLAT RIDGE TOP THAT BEARS N 84° W. PLACED A IRON FENCE POST 0.5 FEET TO THE NORTH OF THE CORNER.  
- 18" DOUGLAS FIR BEARS S 21 1/2° W 23.8 FEET WE SCRIBED CN 1/16 S30 BT AND TAGGED TREE  
- 22" DOUGLAS FIR BEARS S 49 1/2° E 35.3 FEET WE SCRIBED CN 1/16 S30 BT AND TAGGED TREE
- (11) THE CSN 1/64 OF SECTION 30  
SET 5/8" X 40" IRON ROD WITH A 2 1/2" ALUMINUM CAP MARKED LONE ROCK TIMBER CSN 1/64 S30 2007 PLS 2291 0.3 FEET ABOVE GROUND ON A GENTLE WEST FACING SLOPE. PLACED A IRON FENCE POST 0.5 FEET TO THE NORTH OF THE CORNER.  
- 25" DOUGLAS FIR BEARS S 29° W 34.5 FEET WE SCRIBED CSN 1/64 S30 BT AND TAGGED TREE  
- 20" DOUGLAS FIR BEARS S 49 1/2° E 35.3 FEET WE SCRIBED CSN 1/64 S30 BT AND TAGGED TREE
- (12) THE CSNW 1/64 OF SECTION 30  
SET 5/8" X 40" IRON ROD WITH A 2 1/2" ALUMINUM CAP MARKED LONE ROCK TIMBER CSNW 1/64 S30 2007 PLS 2291 0.2 FEET ABOVE GROUND ON A FLAT BENCH APPROXIMATELY 150 FEET EAST OF GRAVEL ROAD. PLACED A IRON FENCE POST 0.5 FEET TO THE NORTH OF THE CORNER  
- 12" DOUGLAS FIR BEARS S 2 1/2° E 12.38 FEET WE SCRIBED CSNW 1/64 S30 BT AND TAGGED TREE  
- 23" DOUGLAS FIR BEARS N 29 1/2° E 30.1 FEET WE SCRIBED CSNW 1/64 S30 BT AND TAGGED TREE  
- 13" DOUGLAS FIR BEARS N 52° E 57.3 FEET WE SCRIBED CSNW 1/64 S30 BT AND TAGGED TREE
- (13) THE CW 1/16 OF SECTION 30  
SET 5/8" X 40" IRON ROD WITH A 2 1/2" ALUMINUM CAP MARKED LONE ROCK TIMBER CW 1/16 S30 2007 PLS 2291 0.4 FEET ABOVE GROUND ON A GENTLE SOUTH FACING SLOPE APPROXIMATELY 2 FEET EAST OF OLD FENCE LINE PLACED A IRON FENCE POST 0.5 TO THE NORTH OF THE CORNER.  
- 12" CEDAR BEARS S 61° W 8.4 FEET WE SCRIBED CW 1/16 S30 BT AND TAGGED TREE  
- 15" CEDAR BEARS N 71° E 57.5 FEET WE SCRIBED CW 1/16 S30 BT AND TAGGED TREE
- (14) THE SW 1/16 OF SECTION 30  
SET 5/8" X 40" IRON ROD WITH A 2 1/2" ALUMINUM CAP MARKED LONE ROCK TIMBER SW 1/16 S30 2007 PLS 2291 0.4 FEET ABOVE GROUND ON FLAT BENCH APPROXIMATELY 1.5 FEET EAST OF OLD FENCE LINE. PLACED A IRON FENCE POST 0.5 FEET TO THE NORTH OF THE CORNER.  
- 11" DOUGLAS FIR BEARS N 10° W 32.7 FEET WE SCRIBED SW 1/16 S30 BT AND TAGGED TREE  
- 16" DOUGLAS FIR BEARS S 41 1/2° W 20.4 FEET WE SCRIBED SW 1/16 S30 BT AND TAGGED TREE
- (15) THE CWSW 1/64 OF SECTION 30  
SET 5/8" X 40" IRON ROD WITH A 2 1/2" ALUMINUM CAP MARKED LONE ROCK TIMBER CWSW 1/64 S30 2007 PLS 2291 0.3 FEET ABOVE GROUND. A SMALL SOUTHERLY FLOWING STREAM LIES 1 FOOT TO THE WEST OF THE CORNER. PLACED A IRON FENCE POST 0.5 FEET TO THE NORTH OF THE CORNER.  
- 17" DOUGLAS FIR BEARS N 56° W 56.2 FEET WE SCRIBED CWSW 1/64 S30 BT AND TAGGED TREE  
- 15" DOUGLAS FIR S 76° W 25.3 FEET WE SCRIBED CWSW 1/64 S30 BT AND TAGGED TREE
- (16) THE WW 1/64 OF SECTION 30  
SET 5/8" X 40" IRON ROD WITH A 2 1/2" ALUMINUM CAP MARKED LONE ROCK TIMBER WW 1/64 S30 2007 PLS 2291 0.2 FEET ABOVE GROUND ON A GENTLE SOUTH FACING SLOPE. THE CORNER LIES IN THREED OF A SMALL DRAW IN MATURE SECOND GROWTH TIMEBER. PLACED A IRON FENCE POST 0.5 FEET TO THE NORTH OF THE CORNER.  
- 14" DOUGLAS FIR BEARS S 87° E 24.3 FEET WE SCRIBED WW 1/64 S30 BT AND TAGGED TREE  
- 18" DOUGLAS FIR N 75° E 12.9 FEET WE SCRIBED WW 1/64 S30 BT AND TAGGED TREE

### CORNER INFORMATION

- (1) THE SOUTHWEST SECTION CORNER FOR SECTION 30  
FOUND 1943 GLO BRASS CAP 0.6 FEET ABOVE GROUND INTERTWINED IN AN OLD FENCE ON A GENTLE SOUTH FACING SLOPE  
- 36" CEDAR N 7° W 105.20 FEET (RECORD 18" CEDAR N 7° W 105.6 FEET)  
- 24" CEDAR N 33 3/4° E 55.74 FEET (RECORD 10" CEDAR N 13 1/2° E 52.14 FEET)
- (2) THE WEST 1/4 FOR SECTIONS 30 AND 25  
FOUND 1943 GLO BRASS CAP 0.6 FEET ABOVE GROUND NEAR THE TOP OF CUTBANK OF A OLD DIRT ROAD.  
- 19" FIR STUMP S 8 1/2° E 22.24 FEET (RECORD 18" FIR S 8° E 22.44 FEET)  
- 21" FIR STUMP N 81° W 28.88 FEET (RECORD 18" FIR N 81 1/2° W 29.04 FEET)
- (3) THE NORTHWEST SECTION CORNER FOR SECTION 30  
FOUND 1943 GLO BRASS CAP 0.6 FEET ABOVE GROUND ON GENTLE SOUTH FACING SLOPE.  
- 26" DOUGLAS FIR N 63° E 15.41 FEET (RECORD 14" FIR N64° E 16.5 FEET)  
- 11" ROTTEN STUMP S39 1/2° E 29.23 FEET (RECORD 11" FIR S 40 1/2° E 29.7 FEET)  
- 59" CEDAR S 37° W 40.11 FEET (RECORD 42" CEDAR S 35 1/2° W 40.26 FEET)  
- 28" CEDAR STUMP BEARS N43° W 56.3 FEET (RECORD N42 1/2° W 56.1 FEET)
- (4) THE NORTH 1/4 FOR SECTIONS 19 AND 30  
FOUND 1966 DOUGLAS COUNTY BRASS CAP 0.2 FEET ABOVE GROUND APPROXIMATELY 3 FEET NORTH OF A WESTERLY FLOWING STEAM AND 20 FEET EAST OF GRAVEL ROAD.  
- 12" HEMLOCK S 26 1/2° W 15.54 FEET (RECORD 13" HEMLOCK S 26 1/2° W 16.0 FEET)  
- 15" CEDAR N 89° 23.14 FEET (RECORD 16" CEDAR N 89° E 24.2 FEET)
- (5) THE NORTHEAST SECTION CORNER FOR SECTION 30  
FOUND 1944 GLO BRASS CAP 1.2 FEET ABOVE GROUND ON A WEST FACING SLOPE.  
- 42" FIR STUMP N 80 1/2° E 24.81 FEET (RECORD 42" STUMP N 80° E 23.1 FEET)  
- 42" FIR STUMP S 65° E 29.18 FEET (RECORD 42" STUMP S 65 1/2° E 29.0 FEET)  
- 16" DOUGLAS FIR S 41 1/2° E 39.49 (RECORD 16" FIR S 41 1/2° E 39.5 FEET)  
- 16" DOUGLAS FIR N 62 1/2° E 19.13 FEET (RECORD 13" FIR N 63° E 19.1 FEET)  
- 11" DOUGLAS FIR N 61 1/4° W 32.93 FEET (RECORD 10" FIR N 61 1/4° W 32.9 FEET)  
- 18" CEDAR S 83 1/2° W 99.41 FEET (RECORD 6" CEDAR S 83 1/2° W 100.6 FEET)
- (6) THE EAST 1/4 FOR SECTION 29 AND 30  
FOUND 1944 GLO BRASS CAP 0.6 FEET ABOVE GROUND ON A EASTERLY FACING SLOPE APPROXIMATELY 40 FEET WEST OF A NEW GRAVEL ROAD.  
- 41" CEDAR STUMP N 43 1/4° W 16.22 FEET (RECORD 40" CEDAR SNAG N 40° W 14.5 FEET)  
- 20" DOUGLAS FIR N 81 1/4° E 16.54 FEET (RECORD 4" FIR S 83° E 16.8 FEET)
- (7) THE SOUTH 1/4 FOR SECTION 30 AND 31  
FOUND 1943 GLO BRASS CAP 0.5 FEET ABOVE GROUND ON SOUTH FACING SLOPE  
- 48" DOUGLAS FIR N 28 1/2° W 10.70 FEET (RECORD 22" FIR N28 1/2° W 11.22 FEET)  
- 36" STUMP S 9 1/2° E 22.93 FEET (RECORD 20" FIR S 7 1/2° E 21.12 FEET)

- LEGEND:**
- ⊙ - FOUND MONUMENTS
  - - SET 5/8" X 40" IRON ROD WITH ALUMINUM CAP
  - ▲ - COMPUTED POINTS
  - - PROJECTED LINES
  - - LINES FLAGGED, BLAZED & TAGGED
  - ✕ - EXISTING FENCE LINES
  - < - > - 1885 GLO V 9 - P3666, P3715-18
  - ( ) - 1944 GLO V 27 - P11521-2 P11591-94

REGISTERED  
PROFESSIONAL  
LAND SURVEYOR

*Ken W. Hoffine*

OREGON  
JUL 25, 2011  
KEN W. HOFFINE  
2211

EXPIRES 6-30-09

MINI GIS #10  
43.37165  
123.09965

MINI GIS #12  
43.36916  
123.10466

MINI GIS #15  
43.36334  
123.10695

CS 67/59-4  
4/4