

GOVERNMENT CORNER RESTORATION FORM

FILED

TOWNSHIP 255 RANGE 3W SEC. 12

PLSS # 660520

Date: 7/25/2024 By: X

This survey consists of:

DOUGLAS COUNTY OREGON

DATE 7-22-24

Map: _____

Narrative: _____

Corner Rpt: CS67/58-32

Corner Designation

SE 1/16 S 12

DOUGLAS COUNTY
SURVEYOR

Monument(s) Found: (Condition and Source)

___ Condition report

___ Not Found

___ Renewed

___ Unrecorded

___ Surveyed In

3/4" Iron Pipe proj.

4"

Previous Renewals

Set by JULIANO 1977

in 68-32

MONUMENT DETAIL

Accessories Found

Burnt-Sawn 16" x 1 1/2 FT FIR STUMP
N 68° E 5.3 FT (REC N 73° E 4.6 FT) ADD
3 1/2" MAG NAIL TOP CENTER

Burnt Sawn 21" x 1 FT FIR STUMP
N 52° W 14.2 FT (REC 13.3 FT) ADD 3 1/2"
MAG NAIL TOP CENTER

New Accessories

Sketch of Monument, Accessories, and General Area

Location & Comments

Burned older Reprod in
S.W. QUADRANT Rest clearcut

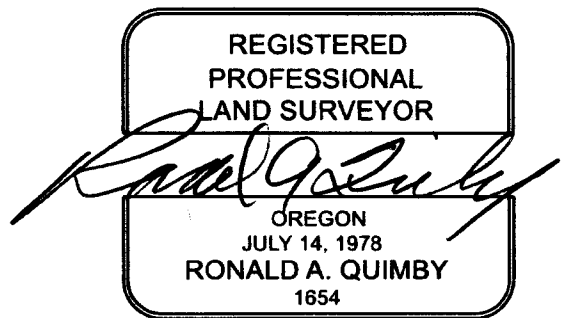
Non-pu Gentle
South Slope Approx
375 FT North of
GRAVEL ROAD

OCRS COORDINATE System
COTTAGE GROVE - CANYONVILLE
ZONE

AREA BUILT
9/2020
Comp. Decline. 14 1/4° E
Agency DCSO
Party Chief S. Fause
Note keeper
Witnesses J. Loring

N 209129.333
E 253851.611

CS 67/58-32
2/3

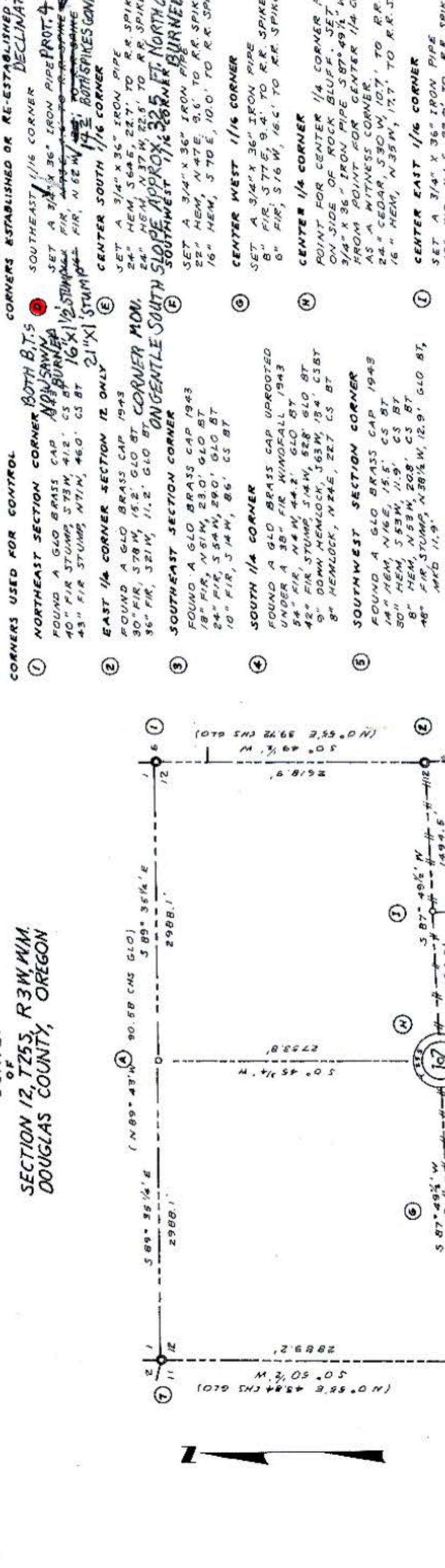


EXPIRES: 12/31/2024

19711 with...
 (PT) HUN...
 WYERHAUEUSER CO.
 SURVEY
 OF
 SECTION 12, T25S, R3W, WM.
 DOUGLAS COUNTY, OREGON

CORNERS ESTABLISHED OR RE-ESTABLISHED OR RE-ESTABLISHED - CONT. 7/22/24
 DECLINATION 14 1/4 E
 RENEWED 7/22/24
 COUNTY SURVEYOR
 1978

1168-32
 209129.333 N
 253851.611 E



- CORNERS USED FOR CONTROL**
- ① **NORTHEAST SECTION CORNER BOTH B.T.S**
 FOUND A GLO BRASS CAP
 40" FIR STUMP, S 73° W, 41.2' CS BT
 43" FIR STUMP, N 71° W, 46.0' CS BT
 - ② **EAST 1/4 CORNER SECTION 12 ONLY**
 FOUND A GLO BRASS CAP 1943
 30" FIR, S 78° W, 15.2' GLO BT
 36" FIR, S 21° W, 11.2' GLO BT
 - ③ **SOUTHEAST SECTION CORNER**
 FOUND A GLO BRASS CAP 1943
 18" FIR, N 91° W, 23.0' GLO BT
 24" FIR, S 54° W, 29.0' GLO BT
 10" FIR, S 14° W, 8.6' CS BT
 - ④ **SOUTH 1/4 CORNER**
 FOUND A GLO BRASS CAP UPROOTED
 UNDER A 38" FIR WINDFALL 1943
 54" FIR, N 4° W, 44.2' GLO BT
 42" FIR, STUMP, S 14° W, 52.8' GLO BT
 9" DOWN MEMLOCK, S 63° W, 15.4' CS BT
 8" MEMLOCK, N 24° E, 22.7' CS BT
 - ⑤ **SOUTHWEST SECTION CORNER**
 FOUND A GLO BRASS CAP 1943
 14" MEM, N 16° E, 15.5' CS BT
 50" MEM, S 53° W, 11.9' CS BT
 8" MEM, N 53° W, 20.8' CS BT
 48" FIR STUMP, N 38 1/2° W, 12.9' GLO BT,
 MKD 11.9'
 - ⑥ **WEST 1/4 CORNER**
 FOUND A GLO BRASS CAP 1943
 40" FIR STUMP, S 74 1/2° E, 29.7' GLO BT
 8" FIR, S 40° W, 19.4' CS BT
 24" CEDAR STUMP, S 67° E, 53.3' CS BT
 - ⑦ **NORTHWEST SECTION CORNER**
 FOUND A GLO BRASS CAP 1943
 6" MAPLE, N 60° E, 44.4' CS BT
 15" MEM STUMP, N 8 1/2° W, 21.8' GLO BT,
 MKD YEW STUMP

CORNERS ESTABLISHED OR RE-ESTABLISHED OR RE-ESTABLISHED - CONT. 7/22/24
 DECLINATION 14 1/4 E
 RENEWED 7/22/24
 COUNTY SURVEYOR
 1978

- ⑧ **CENTER WEST 1/16 CORNER**
 SET A 3/4" X 36" IRON PIPE
 8" FIR, S 77° E, 9.4' TO R.R. SPIKE
 6" FIR, S 16° W, 16.2' TO R.R. SPIKE
 - ⑨ **CENTER 1/4 CORNER**
 POINT FOR CENTER 1/4 CORNER FALLS
 ON SIDE OF ROCK BLUFF. SET A
 3/4" X 36" IRON PIPE S 87° 49 1/2' W, 7.7'
 FROM POINT FOR CENTER 1/4 CORNER
 AS A WITNESS CORNER.
 24" CEDAR, S 30° W, 10.7' TO R.R. SPIKE
 16" MEM, N 35° W, 17.7' TO R.R. SPIKE
 - ⑩ **CENTER EAST 1/16 CORNER**
 SET A 3/4" X 36" IRON PIPE
 48" FIR, N 1° E, 22.0' TO R.R. SPIKE
 24" MEM, S 35° W, 17.0' TO R.R. SPIKE
- NOTES**
- (1) BEARINGS BASED ON GLO 1943 SURVEY FOR W 1/2 SOUTH LINE OF THIS SECTION
 - (2) ○ INDICATES GLO MONUMENT FOUND
 - (3) ○ INDICATES MONUMENT SET
 - (4) ——— INDICATES PROPERTY LINE MARKED WITH NOTCH IN BLAZE
 - (5) DISTANCE TO R.R. SPIKE IN BASE OF TREE REFERS TO HEAD OF SPIKE. WEYERHAEUSER COMPANY CORNER PLATES NAILED ON ALL ESTABLISHED BEARING TREES
 - (6) SCALE: 1" = 600'
 - (7) SURVEYED OCT. NOV-DEC 1977 BY TRIANGLE ENGINEERING CO., EUGENE, OR, 97401
 - (8) CLOSURES
 TRAV TO RE-SET N 1/4 COR 1/25,400
 TRAV TO S 1/4 AND SW COR 1/18,500
 WEYCO PROP TRAV 1/6,700
 TRAV TO W 1/4 COR 1/20,300
 TRAV TO NW COR 1/146,500
 TRAV TO NE AND E 1/4 COR 1/21,300

CS 67158-32
 313