

GOVERNMENT CORNER RESTORATION FORM

FILED

TOWNSHIP 255 RANGE 3W SEC. 12 PLSS # 64052D

Date: 7/25/2024 By: JC

This survey consists of:

DOUGLAS COUNTY OREGON

DATE 7-22-24

Map: _____

Narrative: _____

Corner Rpt: CS 67/58-31

Corner Designation

DOUGLAS COUNTY
SURVEYOR

C 5' / 16 5 12

Monument(s) Found: (Condition and Source)

Condition report

Not Found

Renewed

Unrecorded

Surveyed In

3/4" Iron Pipe proj.

8"

Previous Renewals

JULIANO 1977 M 68-32

MONUMENT DETAIL

Accessories Found

Burnt SAWN 30" X 2FT Hemlock Stump
S64°E 24.0FT (Rec 22.7FT) ADD 5/8" X 30"
Iron Rod with DCSO plastic CAP IN
Top of Stump proj. 6"

Mostly Burnt AWAY 10" X 2FT Hemlock
Stump N37°W 24.2FT (Rec 22.5FT) Both Spikes gone

C.S. File 67/58-31

New Accessories

BURNED - Dead 7" Hemlock N 28° W
8.5 FT WITH 3 1/2" MAG NAIL RIGHT
SIDE CENTER

Sketch of Monument, Accessories, and General Area

Location & Comments

MON. IS ON STEEP N/E SLOPE
OGRS COORDINATE SYSTEM
COTTAGE GROVE - CANYONVILLE
ZONE

MON IS APPROX.
125 FT. NORTH OF
LOGGING SPUR IN
BURNED & OLD REPROD

AREA BURNT
9-2020

N 209006.063
E 252319.122

Comp. Decline. 14 1/4° E
Agency DCSO
Party Chief S. F. HAUSE
Note keeper
Witnesses J. LORSUNG

REGISTERED
PROFESSIONAL
LAND SURVEYOR



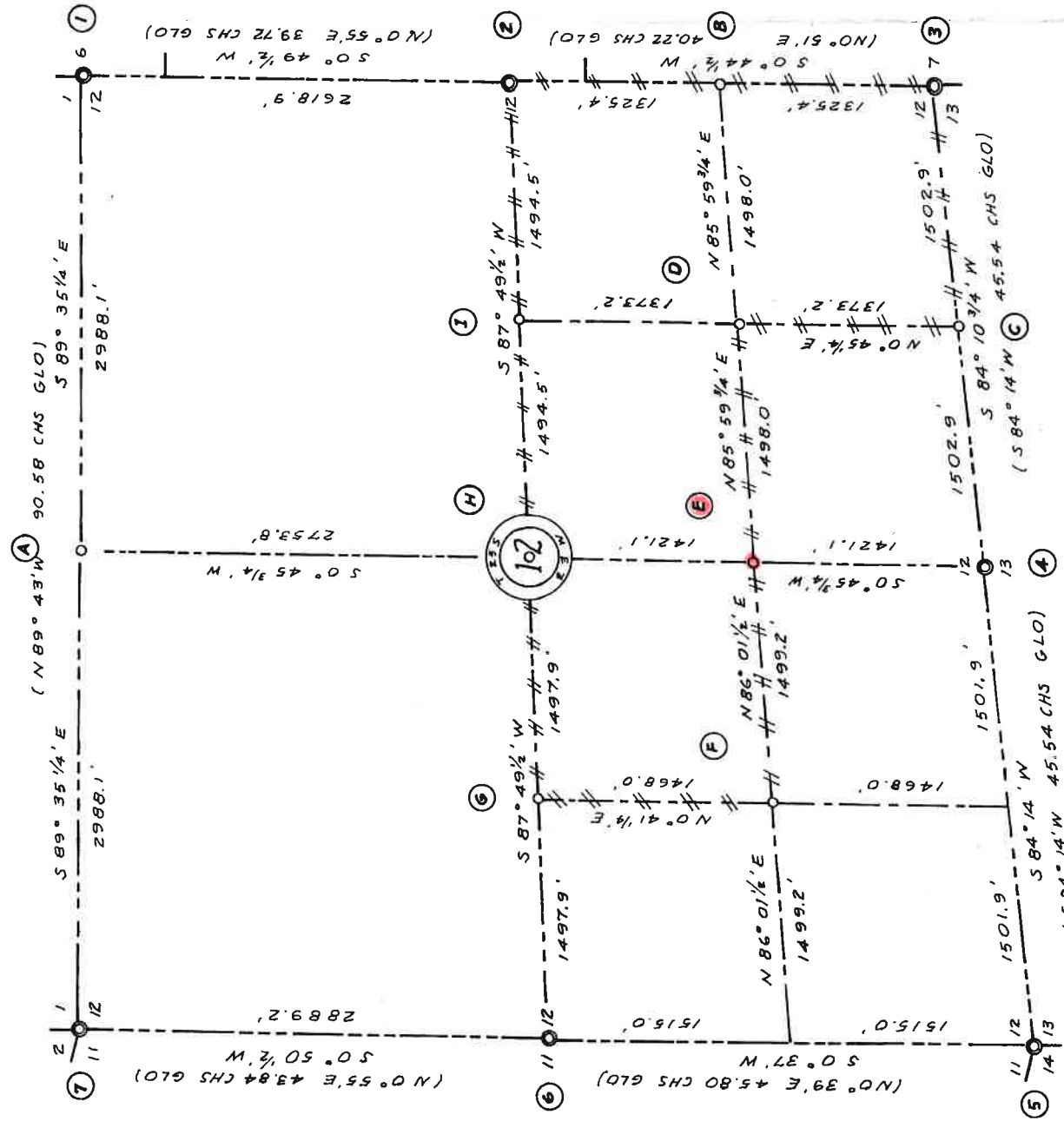
OREGON
JULY 14, 1978
RONALD A. QUIMBY
1654

EXPIRES: 12/31/2024

CS 67/58-31
2/3

WEYERHAEUSER CO.
SURVEY

SECTION 12, T25S, R3W, WM.
DOUGLAS COUNTY, OREGON



CORNERS ESTABLISHED OR RE-ESTABLISHED - CONT

(1) **NORTHEAST SECTION CORNER**
FOUND A GLO BRASS CAP 1943
40" FIR STUMP, S73W, 41.2' CS BT
43" FIR STUMP, N71W, 46.0' CS BT

(2) **EAST 1/4 CORNER SECTION 12 ONLY**
FOUND A GLO BRASS CAP 1943
30" FIR, S78W, 15.2' GLO BT
36" FIR, S21W, 11.2' GLO BT
SWAN BURNED - SET A 3/4" X 36" IRON PIPE PROT. 8" ADD 530' X 30' IR. DISC PARTLY SOLID 30' X 2' X 2' HEMLOCK, S64E, 22.7' TO R.R. SPIKE TOP OF STUMP CAP MOSTLY BURNED AWAY - 24' HEM, N37W, 24.2' TO R.R. SPIKE BOTH SPIKES PROT. 6" S64E, 24.2' FT.

(3) **SOUTHEAST SECTION CORNER 1/16" X 2 FT. STUMP**
FOUND A GLO BRASS CAP 1943
18" FIR, N51W, 23.0' GLO BT
24" FIR, S54W, 29.0' GLO BT
10" FIR, S14W, 8.6' CS BT

(4) **SOUTH 1/4 CORNER**
FOUND A GLO BRASS CAP UPROOTED
UNDER A 38" FIR WINDFALL 1943
54" FIR, N4W, 44.2' GLO BT
42" FIR STUMP, S14W, 528' GLO BT
9" DOWN HEMLOCK, S63W, 13.4' CS BT
8" HEMLOCK, N24E, 22.7' CS BT

(5) **SOUTHWEST SECTION CORNER**
FOUND A GLO BRASS CAP 1943
14" HEM, N16E, 15.5' CS BT
30" HEM, S53W, 11.9' CS BT
8" HEM, N53W, 208' CS BT
48" FIR STUMP, N38 1/2' W, 12.9' GLO BT, MK'D 11.9'

(6) **WEST 1/4 CORNER**
FOUND A GLO BRASS CAP 1943
40" FIR STUMP, S74 1/2' E, 29.7' GLO BT
8" FIR, S40W, 19.4' CS BT
24" CEDAR STUMP, S67E, 53.3' CS BT

(7) **NORTHWEST SECTION CORNER**
FOUND A GLO BRASS CAP 1943
6" MAPLE, N60E, 44.4' CS BT
15" HEM STUMP, N8 1/2' W, 21.8' GLO BT, MK'D YEW STUMP

CORNERS ESTABLISHED OR RE-ESTABLISHED

(A) **NORTH 1/4 CORNER**
SET A 3/4" X 36" IRON PIPE
6" FIR, S89W, 25.5' TO R.R. SPIKE
8" FIR, S25W, 37.7' TO R.R. SPIKE

(B) **SOUTH 1/16 CORNER SECTION 12 ONLY**
SET A 3/4" X 36" IRON PIPE
12" HEM, N15E, 33.4' TO R.R. SPIKE
26" HEM, N37W, 14.7' TO R.R. SPIKE

(C) **EAST 1/16 CORNER SECTIONS 12 & 13**
SET A 3/4" X 36" IRON PIPE
18" HEM, N7E, 19.6' TO R.R. SPIKE
12" HEM, S59E, 5.1' TO R.R. SPIKE

CORNERS USED FOR CONTROL

(D) **SOUTHEAST 1/16 CORNER**
SET A 3/4" X 36" IRON PIPE
16" FIR, N73E, 4.6' TO R.R. SPIKE
16" FIR, N52W, 13.3' TO R.R. SPIKE

(E) **CENTER SOUTH 1/16 CORNER**
RENEWED 7/22/24
SET A 3/4" X 36" IRON PIPE PROT. 8" ADD 530' X 30' IR. DISC TO R.R. SPIKE TOP OF STUMP CAP 24.2' HEM, N37W, 24.2' TO R.R. SPIKE BOTH SPIKES PROT. 6" S64E, 24.2' FT.

(F) **SOUTHWEST 1/16 CORNER**
SET A 3/4" X 36" IRON PIPE
18" HEM, N47E, 9.6' TO R.R. SPIKE
24" HEM, S70E, 10.0' TO R.R. SPIKE
BURNED DEAD 7" HEMLOCK WITH 3 1/2" MAG-NAIL R.S.C. BEARS N28° W 85 FT. DIST.

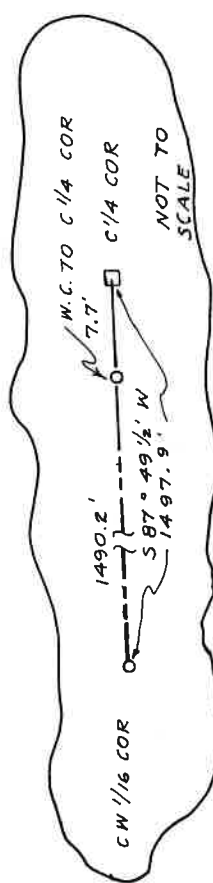
(G) **CENTER 1/4 CORNER**
POINT FOR CENTER 1/4 CORNER FALLS ON SIDE OF ROCK BLUFF. SET A 3/4" X 36" IRON PIPE S87° 49 1/2' W, 7.7' FROM POINT FOR CENTER 1/4 CORNER AS A WITNESS CORNER.
24" CEDAR, S30W, 10.7' TO R.R. SPIKE
16" HEM, N35W, 17.7' TO R.R. SPIKE

(H) **CENTER EAST 1/16 CORNER**
SET A 3/4" X 36" IRON PIPE
48" FIR, N1E, 22.0' TO R.R. SPIKE
24" HEM, S35W, 17.0' TO R.R. SPIKE

(I) **CCRS CANYONVILLE COTTAGE GROVE CORNERS FOR 209006.063 N 252319.122 E**

NOTES FROM LOGGING SPURD. IN BURNED OLDER BEARINGS BASED ON GLO 1943 SURVEY FOR N 1/2 SOUTH LINE OF THIS SECTION

(1) INDICATES GLO MONUMENT FOUND
(2) INDICATES MONUMENT SET
(3) INDICATES PROPERTY LINE
(4) MARKED WITH NOTCH IN BLAZE
(5) DISTANCE TO R.R. SPIKE IN BASE OF TREE REFERS TO HEAD OF SPIKE. WEYERHAEUSER COMPANY CORNER PLATES NAILED ON ALL ESTABLISHED BEARING TREES
(6) SCALE: 1" = 600'
(7) SURVEYED OCT. NOV-DEC 1977 BY TRIANGLE ENGINEERING CO., EUGENE, OR. 97401
(8) CLOSURES
TRAV TO RE-SET N 1/4 COR 1/25,400
TRAV TO S 1/4 AND SW COR 1/18,500
WEYCO PROP TRAV 1/6,700
TRAV TO W 1/4 COR 1/20,900
TRAV TO NW COR 1/46,500
TRAV TO NE AND E 1/4 COR 1/21,300



FILE # 21
REC. 10
COUNTY SURVEYOR
DOUGLAS COUNTY, ORE.

DO NOT REMOVE FROM OFFICE

CS 67/58-31
3/3