

GOVERNMENT CORNER RESTORATION FORM

FILED

TOWNSHIP 26S RANGE 2W SEC. 2

PLSS # 560640

Date: 7/22/2024 By: X

This survey consists of:

Map: _____

DOUGLAS COUNTY OREGON

DATE 7-12-24

Narrative: _____
Corner Rpt: CS 67/58-24

DOUGLAS COUNTY
SURVEYOR

Corner Designation

CE 1/4 S 2

Monument(s) Found: (Condition and Source)

2 1/2" Alum Cap on 5/8"
Iron Rod Down 1 FT.

___ Condition report

___ Not Found

___ Renewed

___ Unrecorded

___ Surveyed In

Previous Renewals

Lecklider 1959 m 11-31

Monrean 2004 m 144-47

CS 65/49-34D

MONUMENT DETAIL

Roseburg Resources

C E 1/4 C

CS 1830

2004

Accessories Found

BURNED SAWN 34" X 5 FT Hemlock Stump
S 12° W 26.0 FT Healed BLAZE FD P.K
Nail Left Side Center

BURNED-SAWN 13" X 6 1/2 FT D. FIR Stump
N 83° W 17.7 FT Healed BLAZE FD P.K
Nail Right Side Center

C.S. File 67/58-24

1/4

RENEWAL

Monument Set (Procedure and Description)

MONUMENT DETAIL

Blank lines for Monument Set description.

New Accessories

Blank lines for New Accessories description.

Sketch of Monument, Accessories, and General Area

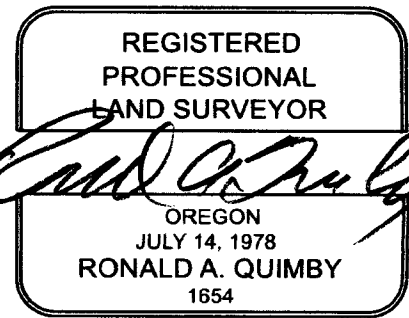
Location & Comments

OCRS Coordinate System
Cottage Grove - Canyonville
Zone

MON. IS 2 1/2 FT.
EAST OF EDGE OF
GRAVEL ROAD IN
Large Clearcut
AREA BURNED
9-2020

N 183515.985
E 279902.999

Comp. Decline. 14 1/4° E
Agency DCSD
Party Chief S. FINN
Note keeper
Witnesses J. LORSUNG

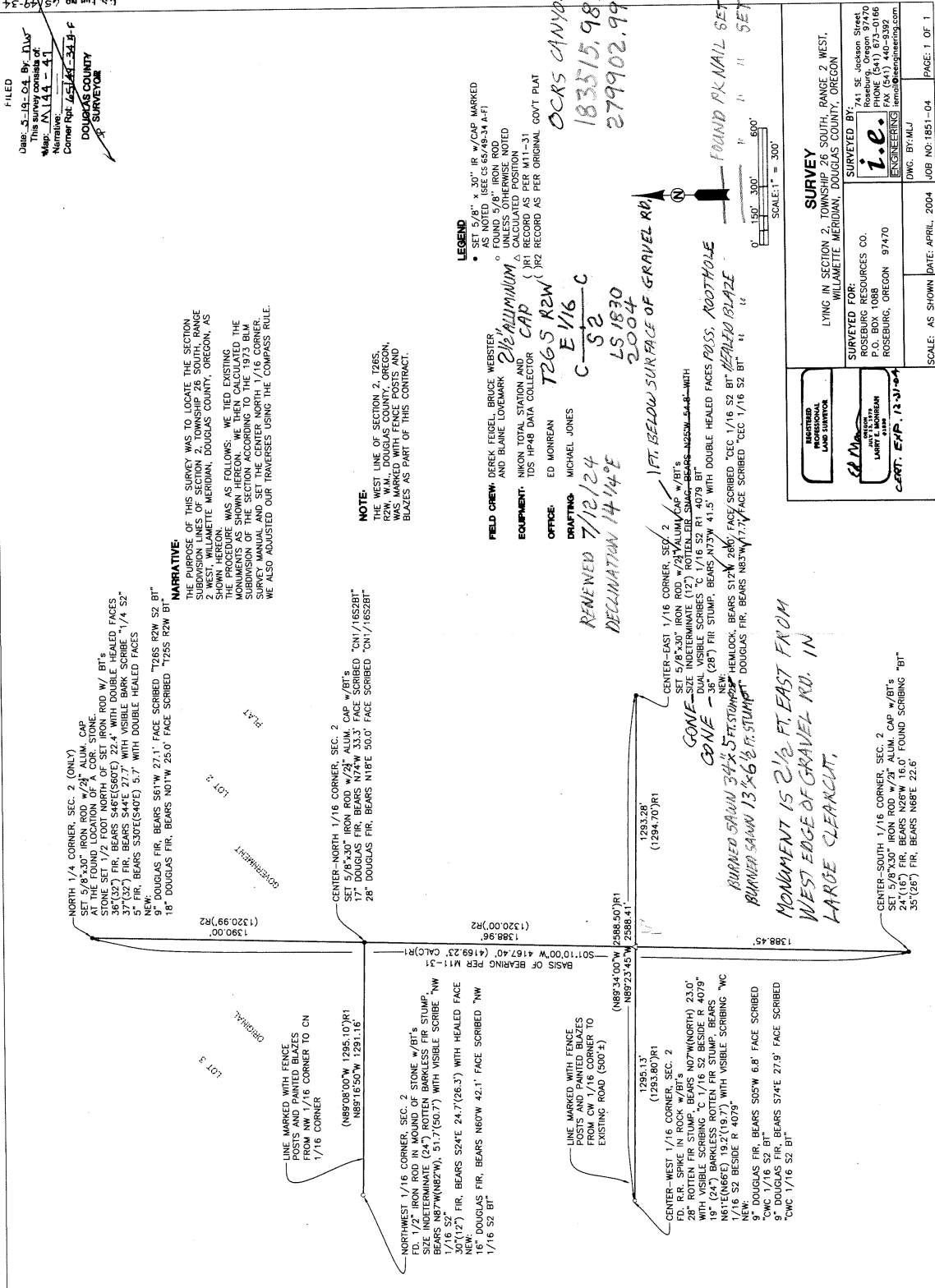


EXPIRES: 12/31/2024

CS 67/58-26
214

**COUNTY SURVEYORS FILE DATA
DO NOT REMOVE FROM OFFICE**

FILED
Date: 5-19-04 By: DJW
This survey consists of
Map No. 144-41
Corner Post 65/49-34-A-F
DOUGLAS COUNTY
SURVEYOR



CS 67/58-26
3/4

CORNER REPORT FORM

Section 2 Township 26S Range 2W.W.M.
Douglas County Date April 26, 2004

CORNER DESIGNATION

CE 1/16

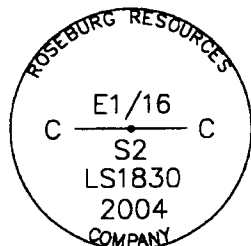
Condition Report only
Not Found
x Renewed
Unrecorded
Surveyed In
Referenced out

Previous Renewals/Surveys, etc:

Monument(s) & Accessories Found: (Condition and Source)

A very rotten 4 foot tall fir snag size indeterminate (12"), bears N25W, 54.8 feet, with dual visible scribes "C 1/16 S2 R1 4079" & "BT".
A 36" (28") diameter fir stump, bears S73W, 41.5 feet, with double healed faces.

Monument Detail



Sketch



Monument Set (Procedures and Description)

A 5/8" x 30" iron rod with a 2-1/2" aluminum cap 0.4 feet below grade.

Spikes were set at approximate center of each stump / snag. A Nikon total station and "TDS" software was then used to establish approximate center of tree. A distance-distance intersection from approximate center of each tree was then used to establish the the corner position which was staked out and set.

New Accessories

A Western Hemlock 25" diameter, bears S12W, 26.0 feet, face scribed "CEC 1/16 S2 BT".
A douglas fir 11" diameter, bears N83W, 17.7 feet, face scribed "CEC 1/16 S2 BT".

FILED
Date: 5/25/2004 By: SC
This survey consists of:
Map: 1144/470
No.
Corner: 65/49-34
A-F
DOUGLAS COUNTY
SURVEYOR

Location & Comments

Distances to found bearing trees were measured with EDM to a spike set at approximate center of stump / snag. New bearing trees were measured to a spike set at approximate side center. Trees were red band and face painted. Trees found without tags have new tags facing monument. The corner falls on the southern edge of a rock road approximately 20 feet west of a gate.

Compass Declination 19 East
Firm/Agency: i.e. Engineering, Inc.

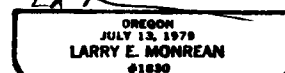
Address: 741 SE Jackson
Roseburg, OR 97470

Party Chief: Bruce Webster

Notes:

Witness:

Surveyor's Seal



CERT. EXP. 12-31-04

CS 67/58-26 4/4

C.S. File No 65/49-34D