

GOVERNMENT CORNER RESTORATION FORM

FILED

TOWNSHIP 255 RANGE 2W SEC. 13

PLSS # 660400

Date: 7/10/2024 By: X
This survey consists of:

DOUGLAS COUNTY OREGON

DATE 6-26-24

Map: _____

Narrative: _____

Corner Rpt: CG 67/58-18

Corner Designation

E 1/16 513
524

DOUGLAS COUNTY
SURVEYOR

Monument(s) Found: (Condition and Source)

3" BLM BRASS CAP ON
Iron Pipe

___ Condition report

___ Not Found

Renewed

___ Unrecorded

___ Surveyed In

Previous Renewals

BLM Resurvey 2002 Vol 54 pg 20912
RICE 2003 M 147-79

MONUMENT DETAIL

T 255 R 2W

E 1/16 513
524

2002

Accessories Found

BURNED 12" D. FIR N18°E 8.4 FT ^{Handled} Single
BLAZE ADD 3 1/2" MAG NAIL RIGHT SIDE
Center

BURNED 24" D. FIRE S20 1/2°E 21.5 FT ^{Handled}
Single BLAZE Add 3 1/2" MAG NAIL
RIGHT SIDE Center

Steel Post along South Side
Alum. Post Along North Side

C.S. File 67/58-18

1/4

New Accessories

18" x 2 1/2 FT Hemlock Stump 572°W
 12.0 FT 3 1/2" MAG NAIL TOP Center

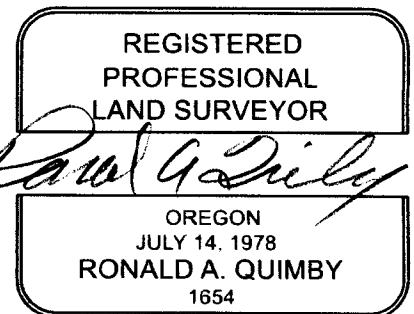
Sketch of Monument, Accessories, and General Area

Location & Comments

DCRS Coordinate System
Cottage Grove - Canyonville
Zone

N 202304.783
E 284859.165

MON IS ≈ 250 FT WEST
OF GRAVEL ROAD
ON FLAT BENCH
BURNED TIMBER TO
N.W. OTHER QUADS
BURNED REPROD
AREA BURNED 9/2020
Comp. Decline. 14' 1/4" E
Agency DCSO
Party Chief J Loring
Note keeper _____
Witnesses _____



EXPIRES: 12/31/2024

CS 67/58-18
2/4

25-2-660400 – EAST 1/16th S13/S24

Found:

Record 10" D. Fir (now 12" Burned) bears, N 18 E, 8.4 ft. (center side spiked w/mag nail)

Record 17" D. Fir (now 24" Burned) bears, S 20 ½ E, 21.5 ft. (center side spiked w/mag nail)

Steel lath along the South side of monument, Aluminum lath along the North side

New:

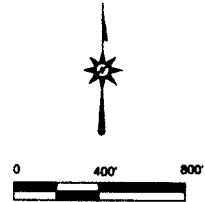
18" x ^{2 1/2}~~1 1/2~~ ft. tall Hemlock stump, bears S 72, 12.0 ft (mag nail in the top center) ✓

Corner lies 250' West of gravel access road on a flat bench of burned standing timber and burned reprod. Timber to the Northwest and reprod in the other 3 quadrants.

CS 67/58-18
3/4

BOUNDARY SURVEY
 FOR: SENECA JONES TIMBER COMPANY
 SE1/4, S13 & NE1/4, S24, T25S, R2W, W.M.
 DOUGLAS COUNTY, OREGON
 15, AUGUST 2003

FILED
 Date: 8/26/2003 By: RP
 This survey consists of:
 Map: M142-79
 Narrative:
 Corner Rpt:
DOUGLAS COUNTY
SURVEYOR



(A)
 CLOSING CORNER COMMON TO SECTIONS 18, 19
 TOWNSHIP 25 SOUTH, RANGE 1 WEST

FOUND 3-1/4" BLM BC DATED 1978
 WITH THE FOLLOWING ACCESSORIES:
 9" D. FIR BEARS N88-14°E 6.6' (HEALED FACE)
 (RECORD N71-1/2"E)
 10" D. FIR BEARS S44-14°E 13.5' (HEALED FACE)
 (RECORD S38-14"E)

(B)
 SE1/16 CORNER SECTION 13

FOUND 3" BLM BC DATED 2002
 WITH THE FOLLOWING ACCESSORIES:
 9" HEMLOCK BEARS S35-1/2°E 21.2' (OPEN FACE SCRIBING VISIBLE)
 11" D. FIR BEARS S86°W 12.6' (OPEN FACE SCRIBING VISIBLE)

(C)
 S1/16 CORNER EAST LINE SECTION 13 ONLY

FOUND 3" BLM BC DATED 1978
 WITH THE FOLLOWING ACCESSORIES:
 11" D. FIR BEARS S85-1/2°W 22.1' (HEALED FACE)
 8" D. FIR BEARS N30-1/2°W 5.6' (HEALED FACE)

(D)
 E1/16 CORNER SECTION 13, 24

FOUND 3" BLM BC DATED 2002
 WITH THE FOLLOWING ACCESSORIES:
 10" D. FIR BEARS N18°E 8.4' (GREEN FACE SCRIBING VISIBLE)
 17" D. FIR BEARS S20-1/2°E 21.5' (OPEN FACE SCRIBING VISIBLE)

(E)
 SECTION CORNER COMMON TO SECTIONS 13, 24 ONLY

FOUND 3" BLM BC DATED 1978
 WITH THE FOLLOWING ACCESSORIES:
 28" D. FIR STUMP BEARS N34-1/2°W 19.1' (VISIBLE SCRIBING)
 16" D. FIR BEARS S27°W 5.6' (HEALED FACE RECORD S32-1/2°W 6.3')
 11" D. FIR BEARS N21-3/4°W 15.2' (HEALED FACE)

(F)
 N1/4 CORNER SECTION 19 ONLY TOWNSHIP 25 SOUTH,
 RANGE 1 WEST

FOUND 3" BLM BC SET IN BEDROCK DATED 1978
 WITH THE FOLLOWING ACCESSORIES:
 18" CEDAR SWAG BEARS N71-1/2°E 42.8' (SCRIBING VISIBLE)
 15" D. FIR BEARS S76-3/4°E 45.2' (HEALED FACE)
 *X 80" IN EXPOSED BEDROCK BEARS S57-3/4°W 4.3'
 NOTE: NO GALVANIZED STEEL POST SET NEAR CORNER

(G)
 NE1/16 CORNER SECTION 24

SET 5/8" X 3/8" REBAR WITH 2-1/2" ALUMINUM CAP
 MARKED AS SHOWN WITH THE FOLLOWING ACCESSORIES: NE 1/16
 28" HEMLOCK BEARS N38-1/2°W 23.6'
 (SEMI-HEALED FACE SCRIBING VISIBLE HOSFORD BT) S24
 2003
 NEW BT'S THIS SURVEY 54633LS
 8" R. CEDAR BEARS N33°E 4.9' BLAZED, SCRIBED
 THE 1/16 S24 BT'

(H)
 N1/16 CORNER EAST LINE SECTION 24 ONLY

SET 5/8" X 3/8" REBAR WITH 2-1/2" ALUMINUM CAP
 MARKED AS SHOWN WITH THE FOLLOWING ACCESSORIES: N 1/16
 13" D. FIR BEARS N31-3/4°W 54.6' BLAZED, SCRIBED "N1/16 S24 BT"
 15" D. FIR BEARS S80-1/2°W 54.6' BLAZED, SCRIBED "N1/16 S24 BT"
 S24
 2003
 54633LS

LEGEND

- SET MONUMENT AS NOTED
- FOUND MONUMENT AS NOTED
- FOUND 1/16 CORNER MONUMENT AS NOTED
- POSTED LINE
- FOUND 1/4 CORNER MONUMENT AS NOTED
- { } 1978 BLM RECORD DATA
- [] 2001-2002 BLM UNOFFICIAL DATA
- < > M16-5 RECORD DATA

REGISTERED
 PROFESSIONAL
 LAND SURVEYOR
Ronald L. Rice
 OREGON
 JULY 4, 2003
 RONALD L. RICE
 54633LS
 EXPIRES: 12-31-2004

Ward NorthWest, Inc.
 P.O. BOX 106 FLORENCE, OR 97439
 (541) 987-8201 FAX 541-987-3648

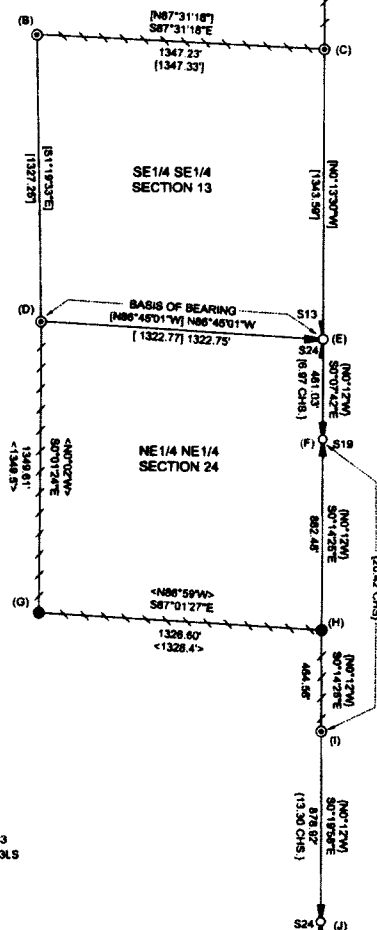
| FILE NAME | | DATE | |
|---------------|--|----------|-------|
| 03-S&P L&T RV | | 8/15/03 | RLR |
| 400 F&R | | | |
| | | REVISION | SHEET |
| 03-54 | | | 1/1 |

EXISTING BT'S BURNED
 + STANDING, CORNER LIES
 250 FT WEST OF GRAVEL
 ACCESS, E/W
 CUT LINE, FLAT BEACH

OCRS N202304.783
 F284859.165

CLOSED SIMPLE
 BLAZE

NEW 18" X 2 1/2" FT TALL HEMLOCK STUMP 572 W 12°
 STEEL LATH SOUTH ALONG SIDE MONUMENT
 ALUMINUM LATH NORTH " " "



NARRATIVE

THE PURPOSE OF THIS SURVEY WAS TO LOCATE AND MARK THE SECTION AND SUBDIVISIONAL LINES OF SECTIONS 13 AND 24 WHICH ARE SHOWN AS POSTED ON THIS PLAT. THIS BOUNDARY SURVEY ALSO REQUIRED THE LOCATION AND MONUMENTATION OF THE N1/16 CORNER ON THE EAST LINE OF SECTION 24.

A PORTION OF THE RANGE LINE BETWEEN R1W AND R2W WAS RETRACED AND MONUMENTED BY V. W. HOSFORD IN 1955 AND AGAIN BY BLM IN 1978. THESE CORNERS WERE TIED AND HELD AS CONTROL FOR CALCULATING THE POSITION FOR THE N1/16 CORNER OF SECTION 24 AND THE POSTING OF LINE.

THE MONUMENTS USED AS CONTROL FOR THE SUBDIVISION OF SECTION 13 WERE SET BY BLM IN 2001-2002. IN A YET TO BE APPROVED SURVEY, THE EVIDENCE USED TO REESTABLISH THE NE 1/16 CORNER OF SECTION 24 WAS RECOVERED FROM A 1955 SUBDIVISION OF SECTION 24 BY V. W. HOSFORD AND RECORDED AS DOUGLAS COUNTY SURVEY FILE M16-5. THE N1/16 CORNER WAS SET AT RECORD BEARING AND DISTANCE FROM THE ONE REMAINING RECORD TREE.

ALL LINES SHOWN AS POSTED WERE MARKED WITH RED PAINTED BLAZES, RED FLAGGING AND GALVANIZED STEEL POSTS. MONUMENTS SHOWN AS FOUND OR SET ON THIS PLAT HAVE A GALVANIZED STEEL POST ADJACENT TO THE CORNER UNLESS OTHERWISE NOTED. ALSO ALL BEARING TREES HAVE A RED PAINTED BAND AND FACE PLUS YELLOW BEARING TREE TAG.

THE BASIS OF BEARING FOR THIS SURVEY IS THE BLM UNOFFICIAL RECORD FOR THE SECTION LINE BETWEEN THE E1/16 CORNER COMMON TO SECTIONS 13 AND 24, AND THE EAST SECTION CORNER COMMON TO SECTIONS 13 AND 24 ONLY.

THIS SURVEY WAS PERFORMED USING A NIKON TOTAL STATION.

(I)
 S1/16 CORNER EAST LINE SECTION 19 ONLY
 TOWNSHIP 25 SOUTH, RANGE 1 WEST

FOUND 3" BLM BC DATED 1978
 WITH THE FOLLOWING ACCESSORIES:
 13" HEMLOCK BEARS N36-1/2°E 57.4' (SEMI-HEALED FACE)
 6" R. CEDAR BEARS S29°E 6.6' (SEMI-HEALED FACE)

(J)
 E1/4 SECTION 24 ONLY

FOUND 2" IRON PIPE WITH 2-1/4" IRON CAP
 MARKED WITH CENTER PUNCH ONLY
 WITH THE FOLLOWING ACCESSORIES:
 32" D. FIR STUMP BEARS S57°W 16.8' (HEALED FACE)
 28" D. FIR STUMP BEARS N27°W 19.8' (SCRIBING VISIBLE)

NEW BT'S THIS SURVEY
 7" D. FIR BEARS S78°W 12.0' BLAZED, SCRIBED "1/4 S24 BT"
 5" D. FIR BEARS S56°W 10.1' BLAZED, SCRIBED "1/4 S24 BT"

CS 67/58-18
 414