

GOVERNMENT CORNER RESTORATION FORM

FILED

TOWNSHIP 255 RANGE 1W SEC. 18 PLSS # 120460

Date: 6/6/2024 By: XC

This survey consists of:

Map: _____

DOUGLAS COUNTY OREGON

DATE 5-28-24

Narrative: _____

Corner Rpt: CS 67/58-4

DOUGLAS COUNTY SURVEYOR

Corner Designation

NW 1/16 S 18

Monument(s) Found: (Condition and Source)

3/4" BLM BRASS CAP
1999 Proj 1"

___ Condition report

___ Not Found

Renewed

___ Unrecorded

___ Surveyed In

Previous Renewals

BLM Resurvey 1999
Vol 52 Pg 20706
RICE 2009 M 159-39

MONUMENT DETAIL

T255 RIW
NW 1/16
S 18
1999

Accessories Found

BURNED DEAD 24" D. FIR N26 1/2° W 7.5 FT
(REC 7.3 FT) HEALED FACE ADD 3 1/2" MAG NAIL
RIGHT SIDE CENTER

BURNED-DEAD 9" D. FIR S 71 1/4° W 9.9 FT
HEALED FACE ADD 3 1/2" MAG NAIL RIGHT
SIDE CENTER

Metal Post 1° South

C.S. File 67/58-4

RENEWAL

Monument Set (Procedure and Description)

MONUMENT DETAIL

New Accessories

Sketch of Monument, Accessories, and General Area

Location & Comments

DCRS COORDINATE SYSTEM
COTTAGE GROVE - CANYONVILLE
ZONE

MONUMENT Moderate
West Slope Approx
125 FT S/E OF GRAVEL
ROAD

N 208546.071
E 291023.140

AREA BURNED
9-2020
Comp. Decline. 14 1/2"E
Agency DCSD
Party Chief S. F. HAUSE
Note keeper
Witnesses J. LORSUNG

REGISTERED
PROFESSIONAL
LAND SURVEYOR

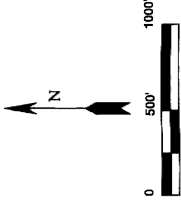


OREGON
JULY 14, 1978
RONALD A. QUIMBY
1654

EXPIRES: 12/31/2024

CS 67/58-4 213

Date: 6/17/2009 By: J.C.
 This survey consists of:
 Map: M159-39
 Narrative:
 Corner Rpt.:
 DOUGLAS COUNTY
 SURVEYOR



- CLOSING CORNER
- 1/4 CORNER
- 1/16 CORNER
- CALCULATED POINT
- CENTER 1/4 CORNER
- SET MONUMENT AS NOTED
- CORNER NOT VISITED THIS SURVEY
- 1981 BLM RECORD DATA
- 2002 BLM RECORD DATA
- PROPERTY LINE MARKED WITH RED PAINTED STEEL POSTS SET AT 200' ± INTERVALS

NOTE: THIS VARIATION REPRESENTS 2002 BLM PLAT CLOSURE ERROR

PROPERTY LINE MARKED WITH RED PAINTED STEEL POSTS SET AT 200' ± INTERVALS

CORNER NOT VISITED THIS SURVEY

LINE REFERENCED AS POSTED WAS MARKED WITH 5-1/2" GALVANIZED STEEL POSTS, RED FLAGGING, AND RED PAINTED BLAZES.

THE BASIS OF BEARING FOR THIS SURVEY WAS THE 2002 BLM INVERSE BETWEEN THE WEST 1/4 CORNER AND THE NORTHWEST 1/16 CORNER OF SECTION 18.

THIS SURVEY WAS PERFORMED USING A NIKON TOTAL STATION.

THE PURPOSE OF THIS SURVEY WAS TO SET SELECTED INTERIOR CORNERS AND CALCULATED POINTS OF INTERIOR LINES OF SECTION 18, TOWNSHIP 25 SOUTH RANGE 12 WEST, WILLAMETTE MERIDIAN, AS DIRECTED BY OUR CLIENTS AND SHOWN HEREON.

THE 2002 BUREAU OF LAND MANAGEMENT (BLM) DEPENDANT RESURVEY AND TOWNSHIP 25, SOUTH RANGE 12 WEST, WILLAMETTE MERIDIAN WAS USED AS CONTROL FOR THIS SURVEY. THE 2002 PLAT RECORD POSITIONS, THE 2002 PLAT POSITION FOR THE SOUTHWEST CORNER OF SECTION 18 IS A COMPILATION OF 1981 BLM DEPENDANT RESURVEY, SUBDIVISION OF SECTIONS, AND REMONUMENTATION, TOWNSHIP 25, SOUTH RANGE 12 WEST, WILLAMETTE MERIDIAN RECORD POSITIONS AND WAS USED FOR DISTANCE, DISTANCE INTERSECTIONS AND TO ADJUST FOR PLAT CLOSURE ERROR BASED ON 1981 BLM RECORD DATA.

FLUK: SENECA-JUNES, LINDBER LUMBER COMPANY AND ROSEBURG RESOURCES COMPANY NW1/4, SW1/4, SECTION 18, T.25S., R.1W., W.M. DOUGLAS COUNTY, OREGON 12 JUNE 2009

NOTE:
 ALL BEARINGS AND DISTANCES MATCH 2002 BLM RECORD UNLESS OTHERWISE NOTED

- *A CORNER
- 1/4 CORNER
- 1/16 CORNER
- FOUND 3/4" BLM BRASS CAP DATED 1978 WITH THE FOLLOWING ACCESSORIES:
 30" D. FIR BEARS S38°E 32.7' - HEALED FACE
 17" D. FIR BEARS S42°E 10.9' - BLAZED, SCRIBED "C120 1/16 S18 BT"
 13" D. FIR BEARS S87°W 10.6' - BLAZED, SCRIBED "C120 1/16 S18 BT"
- *B CORNER
- 1/4 CORNER
- 1/16 CORNER
- SET 2-1/2" ALUMINUM CAP ON 58" X 36" REBAR MARKED AS SHOWN WITH THE FOLLOWING ACCESSORIES:
 23" D. FIR BEARS N71°W 11.7' - BLAZED, SCRIBED "S120 1/16 S18 BT"
 17" D. FIR BEARS S40°W 18.9' - BLAZED, SCRIBED "S120 1/16 S18 BT"
- *C CORNER
- 1/4 CORNER
- 1/16 CORNER
- SET 2-1/2" ALUMINUM CAP ON 58" X 36" REBAR MARKED AS SHOWN WITH THE FOLLOWING ACCESSORIES:
 23" D. FIR BEARS N71°W 11.7' - BLAZED, SCRIBED "S120 1/16 S18 BT"
 17" D. FIR BEARS S40°W 18.9' - BLAZED, SCRIBED "S120 1/16 S18 BT"
- *D CORNER
- 1/4 CORNER
- 1/16 CORNER
- SET 2-1/2" ALUMINUM CAP ON 58" X 36" REBAR MARKED AS SHOWN WITH THE FOLLOWING ACCESSORIES:
 23" D. FIR BEARS N71°W 11.7' - BLAZED, SCRIBED "S120 1/16 S18 BT"
 17" D. FIR BEARS S40°W 18.9' - BLAZED, SCRIBED "S120 1/16 S18 BT"
- *E CORNER
- 1/4 CORNER
- 1/16 CORNER
- SET 2-1/2" ALUMINUM CAP ON 58" X 36" REBAR MARKED AS SHOWN WITH THE FOLLOWING ACCESSORIES:
 23" D. FIR BEARS N71°W 11.7' - BLAZED, SCRIBED "S120 1/16 S18 BT"
 17" D. FIR BEARS S40°W 18.9' - BLAZED, SCRIBED "S120 1/16 S18 BT"
- *F CORNER
- 1/4 CORNER
- 1/16 CORNER
- SET 2-1/2" ALUMINUM CAP ON 58" X 36" REBAR MARKED AS SHOWN WITH THE FOLLOWING ACCESSORIES:
 23" D. FIR BEARS N71°W 11.7' - BLAZED, SCRIBED "S120 1/16 S18 BT"
 17" D. FIR BEARS S40°W 18.9' - BLAZED, SCRIBED "S120 1/16 S18 BT"
- *G CORNER
- 1/4 CORNER
- 1/16 CORNER
- SET 2-1/2" ALUMINUM CAP ON 58" X 36" REBAR MARKED AS SHOWN WITH THE FOLLOWING ACCESSORIES:
 23" D. FIR BEARS N71°W 11.7' - BLAZED, SCRIBED "S120 1/16 S18 BT"
 17" D. FIR BEARS S40°W 18.9' - BLAZED, SCRIBED "S120 1/16 S18 BT"
- *H CORNER
- 1/4 CORNER
- 1/16 CORNER
- SET 2-1/2" ALUMINUM CAP ON 58" X 36" REBAR MARKED AS SHOWN WITH THE FOLLOWING ACCESSORIES:
 23" D. FIR BEARS N71°W 11.7' - BLAZED, SCRIBED "S120 1/16 S18 BT"
 17" D. FIR BEARS S40°W 18.9' - BLAZED, SCRIBED "S120 1/16 S18 BT"
- *I CORNER
- 1/4 CORNER
- 1/16 CORNER
- SET 2-1/2" ALUMINUM CAP ON 58" X 36" REBAR MARKED AS SHOWN WITH THE FOLLOWING ACCESSORIES:
 23" D. FIR BEARS N71°W 11.7' - BLAZED, SCRIBED "S120 1/16 S18 BT"
 17" D. FIR BEARS S40°W 18.9' - BLAZED, SCRIBED "S120 1/16 S18 BT"
- *J CORNER
- 1/4 CORNER
- 1/16 CORNER
- SET 2-1/2" ALUMINUM CAP ON 58" X 36" REBAR MARKED AS SHOWN WITH THE FOLLOWING ACCESSORIES:
 23" D. FIR BEARS N71°W 11.7' - BLAZED, SCRIBED "S120 1/16 S18 BT"
 17" D. FIR BEARS S40°W 18.9' - BLAZED, SCRIBED "S120 1/16 S18 BT"
- *K CORNER
- 1/4 CORNER
- 1/16 CORNER
- SET 2-1/2" ALUMINUM CAP ON 58" X 36" REBAR MARKED AS SHOWN WITH THE FOLLOWING ACCESSORIES:
 23" D. FIR BEARS N71°W 11.7' - BLAZED, SCRIBED "S120 1/16 S18 BT"
 17" D. FIR BEARS S40°W 18.9' - BLAZED, SCRIBED "S120 1/16 S18 BT"
- *L CORNER
- 1/4 CORNER
- 1/16 CORNER
- SET 2-1/2" ALUMINUM CAP ON 58" X 36" REBAR MARKED AS SHOWN WITH THE FOLLOWING ACCESSORIES:
 23" D. FIR BEARS N71°W 11.7' - BLAZED, SCRIBED "S120 1/16 S18 BT"
 17" D. FIR BEARS S40°W 18.9' - BLAZED, SCRIBED "S120 1/16 S18 BT"
- *M CORNER
- 1/4 CORNER
- 1/16 CORNER
- SET 2-1/2" ALUMINUM CAP ON 58" X 36" REBAR MARKED AS SHOWN WITH THE FOLLOWING ACCESSORIES:
 23" D. FIR BEARS N71°W 11.7' - BLAZED, SCRIBED "S120 1/16 S18 BT"
 17" D. FIR BEARS S40°W 18.9' - BLAZED, SCRIBED "S120 1/16 S18 BT"
- *N CORNER
- 1/4 CORNER
- 1/16 CORNER
- SET 2-1/2" ALUMINUM CAP ON 58" X 36" REBAR MARKED AS SHOWN WITH THE FOLLOWING ACCESSORIES:
 23" D. FIR BEARS N71°W 11.7' - BLAZED, SCRIBED "S120 1/16 S18 BT"
 17" D. FIR BEARS S40°W 18.9' - BLAZED, SCRIBED "S120 1/16 S18 BT"
- *O CORNER
- 1/4 CORNER
- 1/16 CORNER
- SET 2-1/2" ALUMINUM CAP ON 58" X 36" REBAR MARKED AS SHOWN WITH THE FOLLOWING ACCESSORIES:
 23" D. FIR BEARS N71°W 11.7' - BLAZED, SCRIBED "S120 1/16 S18 BT"
 17" D. FIR BEARS S40°W 18.9' - BLAZED, SCRIBED "S120 1/16 S18 BT"
- *P CORNER
- 1/4 CORNER
- 1/16 CORNER
- SET 2-1/2" ALUMINUM CAP ON 58" X 36" REBAR MARKED AS SHOWN WITH THE FOLLOWING ACCESSORIES:
 23" D. FIR BEARS N71°W 11.7' - BLAZED, SCRIBED "S120 1/16 S18 BT"
 17" D. FIR BEARS S40°W 18.9' - BLAZED, SCRIBED "S120 1/16 S18 BT"
- *Q CORNER
- 1/4 CORNER
- 1/16 CORNER
- SET 2-1/2" ALUMINUM CAP ON 58" X 36" REBAR MARKED AS SHOWN WITH THE FOLLOWING ACCESSORIES:
 23" D. FIR BEARS N71°W 11.7' - BLAZED, SCRIBED "S120 1/16 S18 BT"
 17" D. FIR BEARS S40°W 18.9' - BLAZED, SCRIBED "S120 1/16 S18 BT"
- *R CORNER
- 1/4 CORNER
- 1/16 CORNER
- SET 2-1/2" ALUMINUM CAP ON 58" X 36" REBAR MARKED AS SHOWN WITH THE FOLLOWING ACCESSORIES:
 23" D. FIR BEARS N71°W 11.7' - BLAZED, SCRIBED "S120 1/16 S18 BT"
 17" D. FIR BEARS S40°W 18.9' - BLAZED, SCRIBED "S120 1/16 S18 BT"
- *S CORNER
- 1/4 CORNER
- 1/16 CORNER
- SET 2-1/2" ALUMINUM CAP ON 58" X 36" REBAR MARKED AS SHOWN WITH THE FOLLOWING ACCESSORIES:
 23" D. FIR BEARS N71°W 11.7' - BLAZED, SCRIBED "S120 1/16 S18 BT"
 17" D. FIR BEARS S40°W 18.9' - BLAZED, SCRIBED "S120 1/16 S18 BT"
- *T CORNER
- 1/4 CORNER
- 1/16 CORNER
- SET 2-1/2" ALUMINUM CAP ON 58" X 36" REBAR MARKED AS SHOWN WITH THE FOLLOWING ACCESSORIES:
 23" D. FIR BEARS N71°W 11.7' - BLAZED, SCRIBED "S120 1/16 S18 BT"
 17" D. FIR BEARS S40°W 18.9' - BLAZED, SCRIBED "S120 1/16 S18 BT"
- *U CORNER
- 1/4 CORNER
- 1/16 CORNER
- SET 2-1/2" ALUMINUM CAP ON 58" X 36" REBAR MARKED AS SHOWN WITH THE FOLLOWING ACCESSORIES:
 23" D. FIR BEARS N71°W 11.7' - BLAZED, SCRIBED "S120 1/16 S18 BT"
 17" D. FIR BEARS S40°W 18.9' - BLAZED, SCRIBED "S120 1/16 S18 BT"
- *V CORNER
- 1/4 CORNER
- 1/16 CORNER
- SET 2-1/2" ALUMINUM CAP ON 58" X 36" REBAR MARKED AS SHOWN WITH THE FOLLOWING ACCESSORIES:
 23" D. FIR BEARS N71°W 11.7' - BLAZED, SCRIBED "S120 1/16 S18 BT"
 17" D. FIR BEARS S40°W 18.9' - BLAZED, SCRIBED "S120 1/16 S18 BT"
- *W CORNER
- 1/4 CORNER
- 1/16 CORNER
- SET 2-1/2" ALUMINUM CAP ON 58" X 36" REBAR MARKED AS SHOWN WITH THE FOLLOWING ACCESSORIES:
 23" D. FIR BEARS N71°W 11.7' - BLAZED, SCRIBED "S120 1/16 S18 BT"
 17" D. FIR BEARS S40°W 18.9' - BLAZED, SCRIBED "S120 1/16 S18 BT"
- *X CORNER
- 1/4 CORNER
- 1/16 CORNER
- SET 2-1/2" ALUMINUM CAP ON 58" X 36" REBAR MARKED AS SHOWN WITH THE FOLLOWING ACCESSORIES:
 23" D. FIR BEARS N71°W 11.7' - BLAZED, SCRIBED "S120 1/16 S18 BT"
 17" D. FIR BEARS S40°W 18.9' - BLAZED, SCRIBED "S120 1/16 S18 BT"
- *Y CORNER
- 1/4 CORNER
- 1/16 CORNER
- SET 2-1/2" ALUMINUM CAP ON 58" X 36" REBAR MARKED AS SHOWN WITH THE FOLLOWING ACCESSORIES:
 23" D. FIR BEARS N71°W 11.7' - BLAZED, SCRIBED "S120 1/16 S18 BT"
 17" D. FIR BEARS S40°W 18.9' - BLAZED, SCRIBED "S120 1/16 S18 BT"
- *Z CORNER
- 1/4 CORNER
- 1/16 CORNER
- SET 2-1/2" ALUMINUM CAP ON 58" X 36" REBAR MARKED AS SHOWN WITH THE FOLLOWING ACCESSORIES:
 23" D. FIR BEARS N71°W 11.7' - BLAZED, SCRIBED "S120 1/16 S18 BT"
 17" D. FIR BEARS S40°W 18.9' - BLAZED, SCRIBED "S120 1/16 S18 BT"

