

GOVERNMENT CORNER RESTORATION FORM

FILED

TOWNSHIP 26S RANGE 2W SEC. 10

PLSS # 420500

Date: 5/7/2024 By: JK

This survey consists of:

Map: _____

Narrative: _____

Corner Rpt: CS 67/57-53

DOUGLAS COUNTY OREGON

DATE 4-29-24

DOUGLAS COUNTY
SURVEYOR

Corner Designation

W 1/16 10/15

Monument(s) Found: (Condition and Source)

___ Condition report

___ Not Found

___ Renewed

___ Unrecorded

___ Surveyed In

2" Alum Cap on 5/8"

Iron Rod

Previous Renewals

Set on M 1/31-58 by

DeGroot 1999

MONUMENT DETAIL

T26S R2W

W 1/16 5/10
5/15

1999

PLS 1941

Accessories Found

Burnt - SAWN 26" X 2" D. Fir Stump
S85° E 43.4 FT (Rec S82° E 43.7') REMAINS
OF HEATED BLAZE ADD 3 1/2" MAG NAIL TOP
CENTER

Burnt - SAWN 24" X 1 1/2" D. Fir Stump N31°W
13.9 FT (Rec N29°W 14.3') REMAINS OF HEATED
BLAZE ADD 3 1/2" MAG NAIL TOP CENTER

C.S. File 67/57-53

New Accessories

Sketch of Monument, Accessories, and General Area

Location & Comments

OCRS Coordinate System
Cottage Grove — Canyonville Zone

MON ON moderately
steep S.E. Slope
100' south of
GRAVEL ROAD

N 175365.9351
E 272054.0584

AREA BURN
9-2020

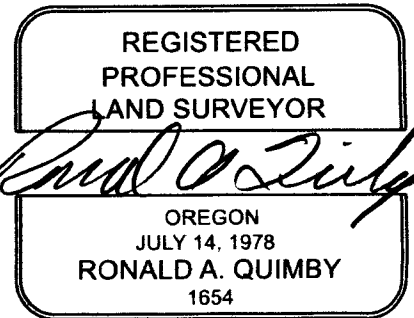
Comp. Decline. 14 1/2° E

Agency DCSD

Party Chief S. F. Haase

Note keeper

Witnesses J. Loring



EXPIRES: 12/31/2024

CS 67157-53 243

Date: 6-4-1999 By: JL
This survey consists of:
Map: M131-58
Narrative:
Corner Ref:
DOUGLAS COUNTY, OR
SURVEYOR

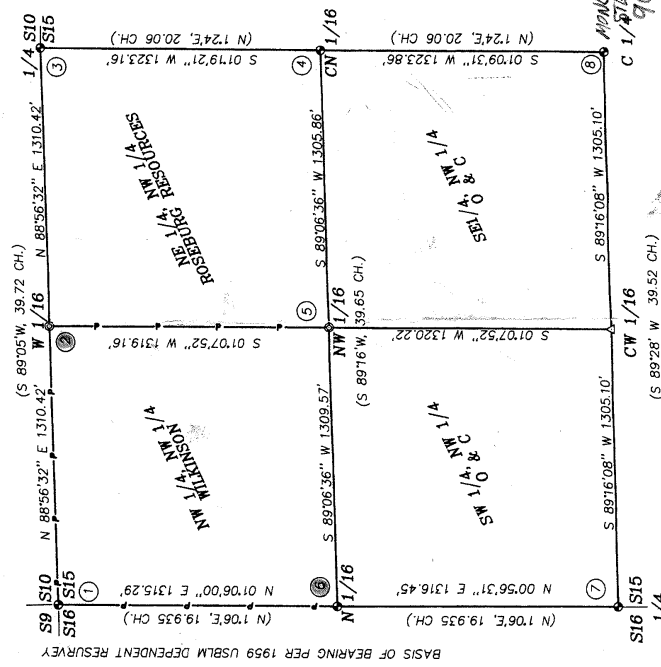
RECORD OF SURVEY

NW 1/4 OF SECTION 15, T. 20S., R. 2W., W.M.
DOUGLAS COUNTY, OREGON

- LEGEND:**
- = SET 5/8" x 30" IRON ROD w/2" ALUMINUM CAP
 - = FOUND BCP
 - △ = COMPUTED POINT
 - = LINE POSTED WITH STEEL POSTS
 - () = RECORD PER 1989 USBLM DEPENDENT SURVEY AND SUBDIVISION
 - Ⓜ = CORNER DESCRIPTION #. SEE NARRATIVE.

REGISTERED PROFESSIONAL LAND SURVEYOR
Kristin O. Bennett
OREGON
KRISTIN O. BENNETT

RENEWAL DATE: 12/31/99



NARRATIVE:

THE PURPOSE OF THIS SURVEY WAS TO ESTABLISH THE WEST 1/4 OF SECTIONS 10 AND 15 AND THE NW 1/4 OF SECTION 15 AND TO POST THE NORTH, EAST AND WEST LINES OF THE NW 1/4 OF SECTION 15. THE SURVEY AREA WAS RECOVERED BY MONUMENTS FOUND PER THE SECTION 15 SURVEY AND SECTION SUBDIVISION OF IRVING ZIRPEL, JR. AND WILLIAM W. GLENN. CLOSED LOOP RANDOM LINE TRAVERSES WERE SURVEYED BETWEEN ALL CONTROLLING CORNERS BY MATT DIXON AND AARON FANNING USING A SOKKIA SET 5A TOTAL STATION WITH COMPUTATIONS AND DRAFTING BY KRIS DEGROOT.

CORNER DESCRIPTIONS:

- S9/S10/S15/S16---FOUND A 2" IRON PIPE BY MENSCH IN 1918, NOW FIRMLY SET PROJECTING 8" ABOVE THE GROUND WITH A 2 1/2" USGLO ROD TO THE N. 26 S. R 2 W. BRASS CAP STAMPED: S9 S10 S15 1918
- FROM WHICH THE ORIGINAL BEARING TREES (REC. 96 LKS.) A 28" ROTTED FIR STUMP BEARS S147°E, 46 LKS. AND BEARING TREES BY ZIRPEL AND GLENN IN 1959. A 20" D. FIR BEARS N.27°E, 26.1 FEET WITH A HEALED BLAZE. (REC. 40 LKS.) A 27" D. FIR BEARS S.68°45'E, 22.4 FEET WITH A HEALED BLAZE. (REC. S.66°30'E, 34 1/2 LKS.) A 22" W. FIR BEARS S.66°45'W, 28 1/4 FEET WITH A HEALED BLAZE. A 21" D. FIR BEARS N.19°30'W, 45.9 FEET WITH A HEALED BLAZE. (REC. N.19°18'W, 45.9 FEET) (RECORDED 4/29/84)
- N 1/16 S10/S15---SET A 5/8"x30" IRON ROD 30" IN THE GROUND WITH A 2" ALUMINUM CAP STAMPED: N 1/16 S10 S15 1999
- CW 1/16 (S 89°28' W 39.52 CH.)
- NW 1/16 (S 89°16' W, 39.65 CH.)
- FROM WHICH THE ORIGINAL BEARING TREES (REC. 96 LKS.) A 28" ROTTED FIR STUMP BEARS S147°E, 46 LKS. AND BEARING TREES BY ZIRPEL AND GLENN IN 1959. A 20" D. FIR BEARS N.27°E, 26.1 FEET WITH A HEALED BLAZE. (REC. 40 LKS.) A 27" D. FIR BEARS S.68°45'E, 22.4 FEET WITH A HEALED BLAZE. (REC. S.66°30'E, 34 1/2 LKS.) A 22" W. FIR BEARS S.66°45'W, 28 1/4 FEET WITH A HEALED BLAZE. A 21" D. FIR BEARS N.19°30'W, 45.9 FEET WITH A HEALED BLAZE. (REC. N.19°18'W, 45.9 FEET) (RECORDED 4/29/84)
- N 1/16 S10/S15---SET A 5/8"x30" IRON ROD 30" IN THE GROUND WITH A 2" ALUMINUM CAP STAMPED: N 1/16 S10 S15 1999
- CW 1/16 (S 89°28' W 39.52 CH.)
- NW 1/16 (S 89°16' W, 39.65 CH.)

175365.9351N 272054.0584E
O.C.R.S. COORD. S →

ANNOUNCEMENT TO 3 1/2" MAG-MAIL TOP CENTER OF BOUND STUMPS
BEARINGS AND DIST. TO 3 1/2" MAG-MAIL TOP CENTER OF BOUND STUMPS
W31 W 131
FROM WHICH BEARING TREES (REC. 96 LKS.) A 28" ROTTED FIR STUMP BEARS S147°E, 46 LKS. AND BEARING TREES BY ZIRPEL AND GLENN IN 1959. A 20" D. FIR BEARS N.27°E, 26.1 FEET WITH A HEALED BLAZE. (REC. 40 LKS.) A 27" D. FIR BEARS S.68°45'E, 22.4 FEET WITH A HEALED BLAZE. (REC. S.66°30'E, 34 1/2 LKS.) A 22" W. FIR BEARS S.66°45'W, 28 1/4 FEET WITH A HEALED BLAZE. A 21" D. FIR BEARS N.19°30'W, 45.9 FEET WITH A HEALED BLAZE. (REC. N.19°18'W, 45.9 FEET) (RECORDED 4/29/84)

REMNANTS OF A 51" D. FIR BEARS S.71°E, 21.1 FEET WITH A HEALED BLAZE. (REC. S.74°42'W, 21.1 FEET) A 23" SUGAR PINE BEARS N.32°W, 17.2 FEET WITH A HEALED BLAZE. (REC. N.35°W) OTHER TREES (REC. N.35°W)

- 3/4 S10/S15---FOUND A 2 1/2" IRON POST BY ZIRPEL AND GLENN IN 1959, FIRMLY SET, PROJECTING 8" ABOVE THE GROUND IN A 2 FOOT DIAMETER MOUND OF STONE WITH A 3 1/2" USBLM STD. BRASS CAP STAMPED: T 26 S R 2 W S10 S15 1959
- FROM WHICH BEARING TREES BY ZIRPEL AND GLENN IN 1959: A 40" D. FIR STUMP BEARS N.27°45'W, 29.4 FEET WITH A HEALED BLAZE. A 24" D. FIR STUMP BEARS S.65°15'E, 90.4 FEET WITH A HEALED BLAZE.
- CN 1/16 S15---FOUND A 2 1/2" IRON POST BY ZIRPEL AND GLENN IN 1959, FIRMLY SET, PROJECTING 2" ABOVE THE GROUND WITH A 3 1/2" USBLM STD. BRASS CAP STAMPED: C 1/16 S15 1959
- FROM WHICH BEARING TREES BY ZIRPEL AND GLENN IN 1959: A 30" D. FIR BEARS S.71°E, 30.0 FEET WITH A HEALED BLAZE. A 23" D. FIR BEARS N.26°30'W, 23.6 FEET WITH A HEALED BLAZE.
- NW 1/16 S15---SET A 5/8"x30" IRON ROD 28" IN THE GROUND WITH A 2" ALUMINUM CAP STAMPED: N 1/16 S15 1959
- FROM WHICH BEARING TREES BY ZIRPEL AND GLENN IN 1959: A 30" D. FIR BEARS S.71°E, 30.0 FEET WITH A HEALED BLAZE. A 23" D. FIR BEARS N.26°30'W, 23.6 FEET WITH A HEALED BLAZE.
- NW 1/16 S15---SET A 5/8"x30" IRON ROD 28" IN THE GROUND WITH A 2" ALUMINUM CAP STAMPED: N 1/16 S15 1959
- FROM WHICH BEARING TREES BY ZIRPEL AND GLENN IN 1959: A 30" D. FIR BEARS S.71°E, 30.0 FEET WITH A HEALED BLAZE. A 23" D. FIR BEARS N.26°30'W, 23.6 FEET WITH A HEALED BLAZE.

N 1/16 S15
C 1/16 S15

DECLARATION 40°E
ANN 3 1/2" MAG-MAIL KSC TO BOUND BT

JOB # 99-032
FILE: WILKINSDWG

ROSEBURG RESOURCES
P.O. BOX 1088

FOR JAMES WILKINSON
4000 W. DODD

SCALE: 1" = 400'

ENGINEERING & SURVEYING, INC.