

GOVERNMENT CORNER RESTORATION FORM

TOWNSHIP 26S RANGE 2W SEC. 34 PLS # 440160

FILED 12/20/2023
Date: 12/20/2023 By: X
This survey consists of:

DOUGLAS COUNTY OREGON

DATE 12-5-23

Map: _____
Narrative: _____
Corner Rpt: C567/57-25

Corner Designation

CN 1/16 S34

DOUGLAS COUNTY
SURVEYOR

Monument(s) Found: (Condition and Source)

2 1/2" Alum. Cap on 1/2"
R. D. Iron Pipe
up 12"

Previous Renewals

Set by Shrum 1979
M 76-56

Accessories Found

10" Burnt Fir stub S80°W 4.5 FT
ADP Rough stone mound around
monument base

- Condition report
- Not Found
- Renewed
- Unrecorded
- Surveyed In

T26S R2W R5 A2B7

MONUMENT DETAIL

N 1/16
•
S34
1978

C.S. File 67/57-25

RENEWAL

Monument Set (Procedure and Description)

MONUMENT DETAIL

New Accessories

2 5/8" X 30" IRON RODS WITH DCSD
PLASTIC CAPS PROJ. 1" IN SOUTH
SHOULDER OF ROAD

N 66° E 85.5 FT

N 26° W 71.5 FT

Sketch of Monument, Accessories, and General Area

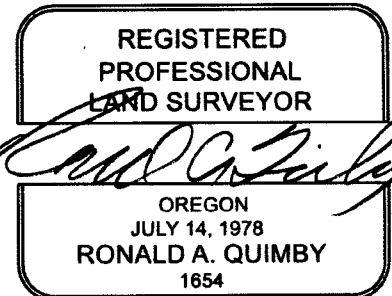
Location & Comments

DCRS COORDINATE SYSTEM
COTTAGE GROVE CANYONVILLE
ZONE

N 158684.975
E 273764.455

AREA BURNT
9/2020

Comp. Decline. 14 1/2° E
Agency DCSD
Party Chief S. F. HAUSE
Note keeper
Witnesses J. LORSUNG

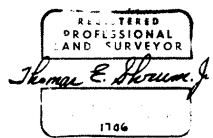


EXPIRES: 12/31/2024

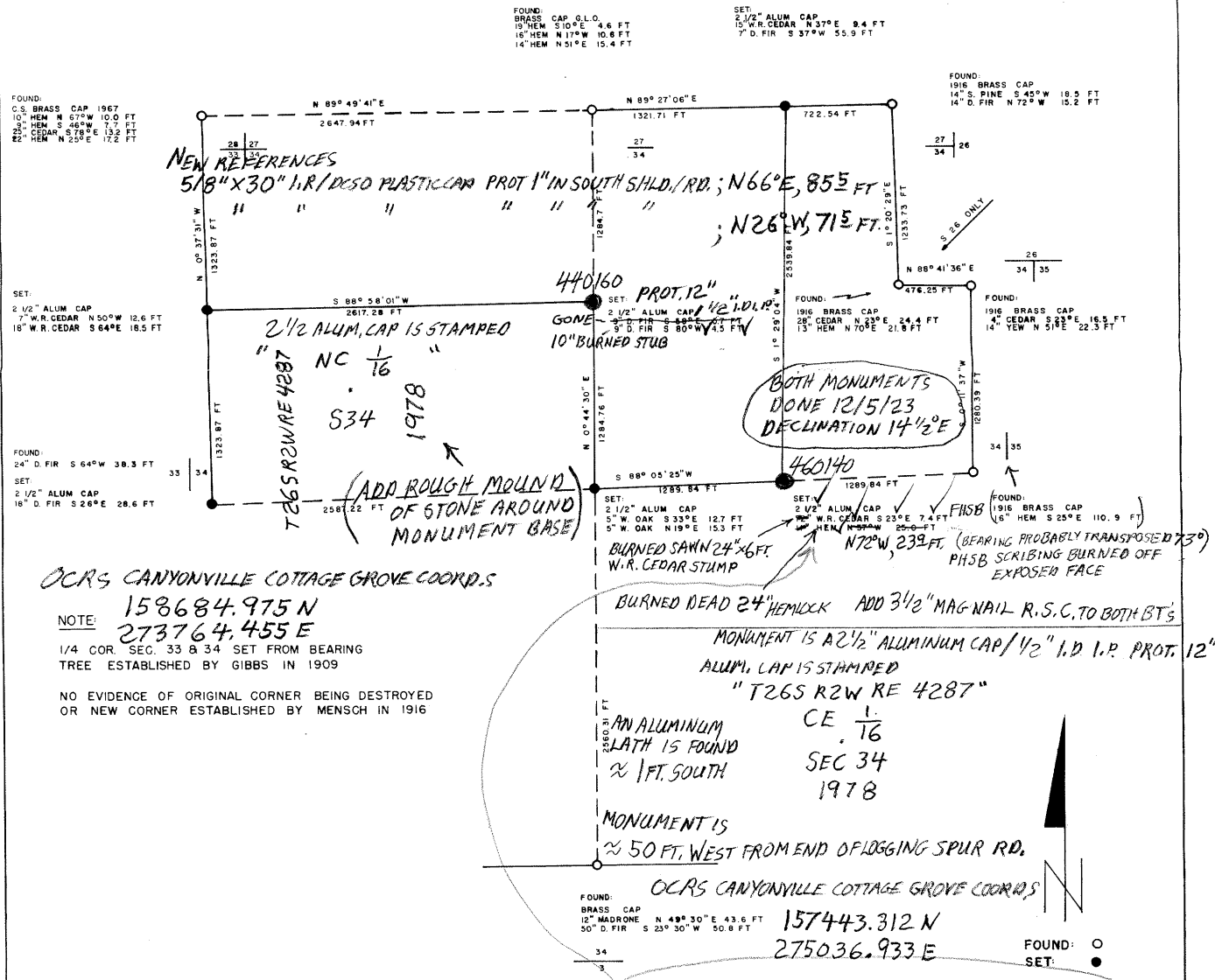
CS67/57-25
2/3

FILED
RECEIVED
DEPT. OF LAND
COUNTY SURVEYOR
WHEELER COUNTY, ORE.

SURVEY OF
SECTION 34, T.26S., R.2W., W.M.
SURVEYED FOR: CHAMPION INTERNATIONAL CORP.
SURVEYED BY: T. E. SHRUM, JR.



DATE: 2-1-79 SCALE: 1" = 500' BEARINGS BASED ON COMPASS BEARING



O.C.R.S. CANYONVILLE COTTAGE GROVE COORD.S

NOTE: 158684.975 N
273764.455 E
1/4 COR. SEC. 33 & 34 SET FROM BEARING
TREE ESTABLISHED BY GIBBS IN 1909

NO EVIDENCE OF ORIGINAL CORNER BEING DESTROYED
OR NEW CORNER ESTABLISHED BY MENSCH IN 1916

2001 M 132-70 Slipper