

GOVERNMENT CORNER RESTORATION FORM

FILED

TOWNSHIP 24S RANGE 3W SEC. 22

PLSS # 500360

Date: 11/13/2023 By: JC

This survey consists of:

Map: \_\_\_\_\_

DOUGLAS COUNTY OREGON

DATE 10-31-23

Narrative: \_\_\_\_\_

Corner Rpt: CS 67/57-11

DOUGLAS COUNTY  
SURVEYOR

Corner Designation

N 1/16 22/23

Monument(s) Found: (Condition and Source)

2 1/2" BRASS CAP ON 1 5/8"  
IRON post up 13"

\_\_\_ Condition report

\_\_\_ Not Found

Renewed

\_\_\_ Unrecorded

\_\_\_ Surveyed In

Previous Renewals

BAKER 1983 M 90-48

BADLEY 2021 M 177-68

MONUMENT DETAIL

T 24S R 3W  
N 1/16

S 22/S 23

PLS 1978  
1983

Accessories Found

SINGED - DEAD 63" CEDAR S 88°30' E 30.5 FT  
WITH BURNED BLAZE

25" X 5 FT HEMLOCK STUMP S 46° W 8 FT WITH  
HEATED DOUBLE BLAZE BURNED

SINGED 15" X 6 FT SAWN HEMLOCK STUMP  
N 44° 15' W 30.0 FT VISIBLE SCRIBES  
N 1/16 S 22 BT ON DOUBLE BLAZE

C.S. File 67/57-11

Monument Set (Procedure and Description)

MONUMENT DETAIL

Blank lines for Monument Set description.

New Accessories

Blank lines for New Accessories description.

Sketch of Monument, Accessories, and General Area

Location & Comments

OCRS COORDINATE SYSTEM  
Cottage Grove - Canyonville  
Zone

N 232685.912

E 244376.849

Cor. is approx 35'  
North of old  
Logging Rd.

AREA BURNED  
9-2020

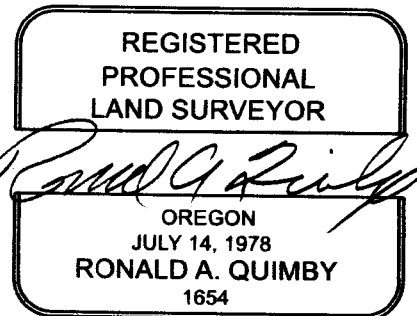
Comp. Decline. 14 1/2° E

Agency DCSD

Party Chief S. F. AUSE

Note keeper

Witnesses J. LORSUNG



CS 67/57-11

213

**CORNER DESCRIPTIONS:**

ALL NEW BEARING TREES HAVE DOUBLE BLAZED TAGS WITH A BRASS WASHER STAMPED "BADGLEY PLS/1978" NAILED INTO THE LOWER BLAZE. BEARINGS ARE TAKEN TO THE CENTER OF THE TREE AT THE ROOT CROWN AND DISTANCES ARE MEASURED TO A NAIL IN THE ROOT CROWN AT THE SIDE AND CENTER OF THE TREE WITH A 10" AL. STATION. ALL BEARING TREES HAVE A 6" RED BAND PAINTED AROUND THE TRIF AND THE BLAZED FACE PAINTED ORANGE AND BEARING TREE SIGNS NAILED TO THE TREE.

1. S14/S15 (S22/S23)  
A 1 5/8" IRON POST BY DAN BAKER IN 1983 PER M90-48, FIRMLY SET AND PROJECTING 10" ABOVE THE GROUND, WITH A 2 1/2" BRASS CAP MARKED:  
PLSS ID NO. 500400  
FROM WHICH BEARING TREES BY BAKER IN 1983:  
A 27' D. FIR BEARS N.40°30'E., 35.8 FT LIGHTLY BURNED (N.7E., 35.1')  
A 27' D. FIR BEARS S.40°45'E., 24.4 FT LIGHTLY BURNED (S.39E., 23.4')  
A 38' D. FIR BEARS N.48°30'W., 20.6 FT LIGHTLY BURNED (N.46 1/2'W., 19.9')  
A 17' D. FIR BEARS S.29°30'W., 54.4 FT MARKED "T245 R3W S22 BT" ON DOUBLE BLAZE

2. W 1/16 S14/S23  
A 1 5/8" IRON POST BY DAN BAKER IN 1983 PER M90-48, FIRMLY SET AND PROJECTING 18" ABOVE THE GROUND, WITH A 2 1/2" BRASS CAP MARKED:  
PLSS ID NO. 520400  
FROM WHICH BEARING TREES BY BAKER IN 1983:  
A DESTROYED BURNED FIR BEARS N.56°00'E., 29.5 FT (N.57E., 28.6')  
A 13' D. FIR BEARS S.11°30'W., 31.8 FT MARKED "W 1/16 S23 BT" ON DOUBLE BLAZE  
A 10' D. FIR BEARS N.44°00'E., 22.4 FT MARKED "W 1/16 S14 BT" ON DOUBLE BLAZE

3. ON 1/16 S22  
A 2" IRON POST BY DAN BAKER IN 1983 PER M90-48, FIRMLY SET AND PROJECTING 18" ABOVE THE GROUND, WITH A 2 1/2" BRASS CAP MARKED:  
PLSS ID NO. 440360  
FROM WHICH BEARING TREES BY BAKER IN 1983:  
A 66" BURNED D. FIR STUMP BEARS S.64°45'E., 33.3 FT (S.63E., 30.0')  
A 66" BURNED D. FIR STUMP BEARS N.30°30'W., 44.3 FT (N.29'W., 41.8')  
A 11" D. FIR BEARS N.4°45'E., 21.2 FT MARKED "ON 1/16 S22 BT" ON DOUBLE BLAZE  
A 14" D. FIR BEARS S.16°30'E., 21.3 FT MARKED "ON 1/16 S22 BT" ON DOUBLE BLAZE

4. NE 1/16 S22  
A 2" IRON POST BY DAN BAKER IN 1983 PER M90-48, FIRMLY SET AND PROJECTING 5" ABOVE THE GROUND, WITH A 3" BRASS CAP MARKED:  
PLSS ID NO. 460360  
FROM WHICH BEARING TREES BY BAKER IN 1983:  
A 29" BURNED CEDAR STUMP 3 FT HIGH BEARS N.71°00'E., 26.7 FT (N.72E., 25.4')  
A 43" BURNED CEDAR STUMP 4 FT HIGH BEARS S.17°45'E., 13.3 FT (S.18E., 11.1')  
A 15" D. FIR BEARS N.4°15'E., 49.2 FT MARKED "NE 1/16 S22 BT" ON DOUBLE BLAZE  
A 12" D. FIR BEARS N.84°15'E., 50.0 FT MARKED "NE 1/16 S22 BT" ON DOUBLE BLAZE

5. NW 1/16 S22/S23  
A 5/8" IRON POST BY DAN BAKER IN 1983 PER M90-48, FIRMLY SET AND PROJECTING 13" ABOVE THE GROUND, WITH A 2 1/2" BRASS CAP MARKED:  
PLSS ID NO. 500360  
FROM WHICH BEARING TREES BY BAKER IN 1983:  
A 63" CEDAR BEARS S.88°30'E. 30.5 FT W/HEALED BLAZE BURNED (S.88E., 29.2')  
A 25" HELMLOCK STUMP 5 FT HIGH BEARS S.46°00'W., 8.0 FT W/HEALED DOUBLE BLAZE & BURNED (S.46'W., 7.4')  
A 15" HELMLOCK BEARS N.44°15'W., 30.0 FT MARKED "NW 1/16 S22 BT" ON DOUBLE BLAZE  
THE CORNER LIES APPROXIMATELY 35 FT NORTH OF AN OLD LOGGING ROAD.

6. NW 1/16 S23  
A 1 5/8" IRON POST BY DAN BAKER IN 1983 PER M90-48, FIRMLY SET AND PROJECTING 6" ABOVE THE GROUND, WITH A 2 1/2" BRASS CAP MARKED:  
PLSS ID NO. 520360  
FROM WHICH NEW BEARING TREES:  
A 13' D. FIR BEARS S.61°45'E., 23.1 FT MARKED "NW 1/16 S23 BT" ON DOUBLE BLAZE  
A 19' D. FIR BEARS N.31°30'E., 59.1 FT MARKED "NW 1/16 S23 BT" ON DOUBLE BLAZE  
THE CORNER LIES APPROXIMATELY 15 FT NORTH OF AN OLD SKD ROAD.

**RECORD OF SURVEY**  
LOCATED IN THE NE 1/4 SECTION 22  
& THE NW 1/4 OF 23, T.24S., R.3W., W.M.  
DOUGLAS COUNTY, OREGON

FILED  
1-5-2021  
By  
This Survey Complied with  
Map No. M177-68  
Name  
Corner No.  
DOUGLAS COUNTY  
SURVEYOR

PLSS ID NO. 440340  
A 1 5/8" IRON POST BY DAN BAKER IN 1983 PER M90-48, FIRMLY SET AND PROJECTING 6" ABOVE THE GROUND, WITH A 2 1/2" BRASS CAP MARKED:  
FROM WHICH BEARING TREES BY BAKER IN 1983:  
A 23' CEDAR SNAG BEARS N.49°30'E., 26.9 FT W/HEALED BLAZE (N.51E., 25.2')  
A 17' D. FIR BEARS N.53°30'E., 33.7 FT MARKED "C 1/4 S22 BT" ON DOUBLE BLAZE  
A 18' MAPLE BEARS N.67°30'E., 45.6 FT MARKED "C 1/4 S22 BT" ON DOUBLE BLAZE  
AND A 1" ALUMINUM PIPE SET BY WEYERHAEUSER CO. AND REINFORCED BY BAKER IN 1983 BEARS N.67°55'43"E., 44.84 FT (N.67°52'58"E., 46.08')

PLSS ID NO. 460340  
A 2" IRON POST BY DAN BAKER IN 1983 PER M90-48, FIRMLY SET FLUSH TO THE GROUND, WITH A 2 1/2" BRASS CAP MARKED:  
FROM WHICH NEW BEARING TREES:  
A 29' D. FIR BEARS N.33°15'W., 82.7 FT MARKED "CE 1/16 S22 BT" ON DOUBLE BLAZE  
A 12' D. FIR BEARS S.73°30'W., 103.7 FT MARKED "C 1/16 S22 BT" ON DOUBLE BLAZE

PLSS ID NO. 500360  
A 5/8" IRON POST BY DAN BAKER IN 1983 PER M90-48, FIRMLY SET AND PROJECTING 13" ABOVE THE GROUND, WITH A 2 1/2" BRASS CAP MARKED:  
FROM WHICH BEARING TREES BY BAKER IN 1983:  
A 63" CEDAR BEARS S.88°30'E. 30.5 FT W/HEALED BLAZE BURNED (S.88E., 29.2')  
A 25" HELMLOCK STUMP 5 FT HIGH BEARS S.46°00'W., 8.0 FT W/HEALED DOUBLE BLAZE & BURNED (S.46'W., 7.4')  
A 15" HELMLOCK BEARS N.44°15'W., 30.0 FT MARKED "NW 1/16 S22 BT" ON DOUBLE BLAZE  
THE CORNER LIES APPROXIMATELY 35 FT NORTH OF AN OLD LOGGING ROAD.

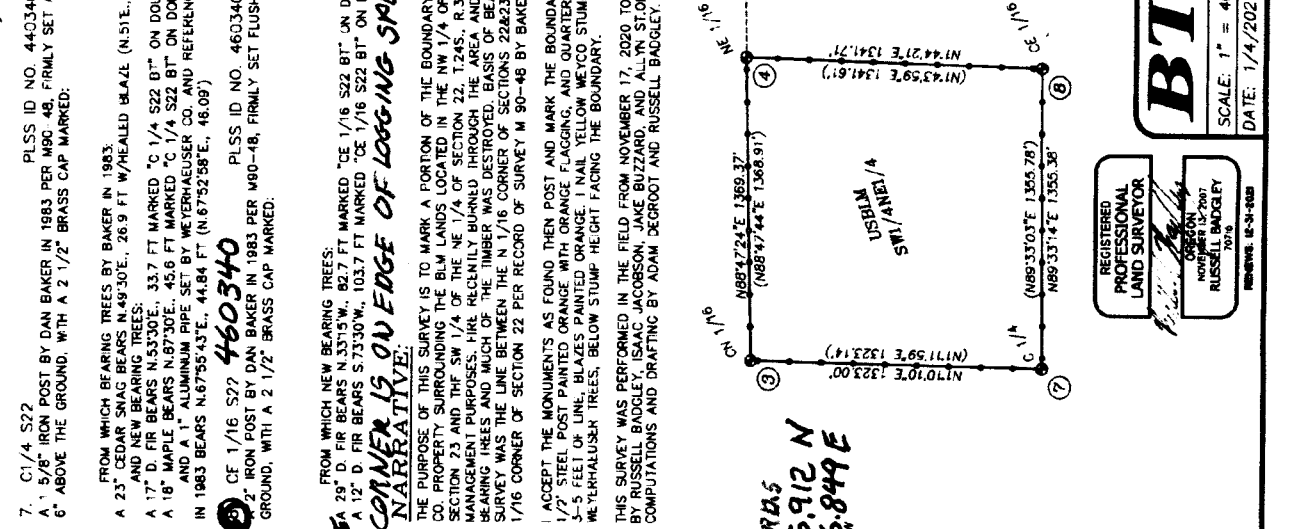
PLSS ID NO. 520360  
A 1 5/8" IRON POST BY DAN BAKER IN 1983 PER M90-48, FIRMLY SET AND PROJECTING 6" ABOVE THE GROUND, WITH A 2 1/2" BRASS CAP MARKED:  
FROM WHICH NEW BEARING TREES:  
A 13' D. FIR BEARS S.61°45'E., 23.1 FT MARKED "NW 1/16 S23 BT" ON DOUBLE BLAZE  
A 19' D. FIR BEARS N.31°30'E., 59.1 FT MARKED "NW 1/16 S23 BT" ON DOUBLE BLAZE  
THE CORNER LIES APPROXIMATELY 15 FT NORTH OF AN OLD SKD ROAD.

PLSS ID NO. 520360  
A 1 5/8" IRON POST BY DAN BAKER IN 1983 PER M90-48, FIRMLY SET AND PROJECTING 6" ABOVE THE GROUND, WITH A 2 1/2" BRASS CAP MARKED:  
FROM WHICH NEW BEARING TREES:  
A 13' D. FIR BEARS S.61°45'E., 23.1 FT MARKED "NW 1/16 S23 BT" ON DOUBLE BLAZE  
A 19' D. FIR BEARS N.31°30'E., 59.1 FT MARKED "NW 1/16 S23 BT" ON DOUBLE BLAZE  
THE CORNER LIES APPROXIMATELY 15 FT NORTH OF AN OLD SKD ROAD.

PLSS ID NO. 520360  
A 1 5/8" IRON POST BY DAN BAKER IN 1983 PER M90-48, FIRMLY SET AND PROJECTING 6" ABOVE THE GROUND, WITH A 2 1/2" BRASS CAP MARKED:  
FROM WHICH NEW BEARING TREES:  
A 13' D. FIR BEARS S.61°45'E., 23.1 FT MARKED "NW 1/16 S23 BT" ON DOUBLE BLAZE  
A 19' D. FIR BEARS N.31°30'E., 59.1 FT MARKED "NW 1/16 S23 BT" ON DOUBLE BLAZE  
THE CORNER LIES APPROXIMATELY 15 FT NORTH OF AN OLD SKD ROAD.

PLSS ID NO. 520360  
A 1 5/8" IRON POST BY DAN BAKER IN 1983 PER M90-48, FIRMLY SET AND PROJECTING 6" ABOVE THE GROUND, WITH A 2 1/2" BRASS CAP MARKED:  
FROM WHICH NEW BEARING TREES:  
A 13' D. FIR BEARS S.61°45'E., 23.1 FT MARKED "NW 1/16 S23 BT" ON DOUBLE BLAZE  
A 19' D. FIR BEARS N.31°30'E., 59.1 FT MARKED "NW 1/16 S23 BT" ON DOUBLE BLAZE  
THE CORNER LIES APPROXIMATELY 15 FT NORTH OF AN OLD SKD ROAD.

PLSS ID NO. 520360  
A 1 5/8" IRON POST BY DAN BAKER IN 1983 PER M90-48, FIRMLY SET AND PROJECTING 6" ABOVE THE GROUND, WITH A 2 1/2" BRASS CAP MARKED:  
FROM WHICH NEW BEARING TREES:  
A 13' D. FIR BEARS S.61°45'E., 23.1 FT MARKED "NW 1/16 S23 BT" ON DOUBLE BLAZE  
A 19' D. FIR BEARS N.31°30'E., 59.1 FT MARKED "NW 1/16 S23 BT" ON DOUBLE BLAZE  
THE CORNER LIES APPROXIMATELY 15 FT NORTH OF AN OLD SKD ROAD.



**NARRATIVE:**  
THE PURPOSE OF THIS SURVEY IS TO MARK A PORTION OF THE BOUNDARY OF WEYERHAEUSER CO. PROPERTY SURROUNDING THE BLM LANDS LOCATED IN THE NW 1/4 OF THE NW 1/4 OF SECTION 23 AND THE SW 1/4 OF THE NE 1/4 OF SECTION 22, T.24S., R.3W., W.M. FOR MANAGEMENT PURPOSES. HRS. RECENTLY BURNED THROUGH THE AREA AND MANY OF THE BEARING TREES AND MUCH OF THE TIMBER WAS DESTROYED. BASIS OF BEARINGS FOR THE SURVEY WAS THE LINE BETWEEN THE N 1/16 CORNER OF SECTIONS 22&23 AND THE NORTHEAST 1/16 CORNER OF SECTION 22 PER RECORD OF SURVEY M 90-48 BY BAKER IN 1983.  
I ACCEPT THE MONUMENTS AS FOUND THEN POST AND MARK THE BOUNDARY AS SHOWN WITH 5 1/2" STEEL POST PAINTED ORANGE WITH ORANGE FLAGGING, AND QUARTER BLAZE TREES WITHIN 3-5 FEET OF LINE. BLAZES PAINTED ORANGE, 1 NAIL YELLOW WEYCO STUMP TAGS ON WEYERHAEUSER TREES, BELOW STUMP HEIGHT FACING THE BOUNDARY.  
THIS SURVEY WAS PERFORMED IN THE FIELD FROM NOVEMBER 17, 2020 TO DECEMBER 4, 2020 BY RUSSELL BRIDGLE ISAAC, JACOBSON, JAKE BUZZARD, AND ALVIN STONGE, WITH COMPUTATIONS AND DRAFTING BY ADAM DEGRUOT AND RUSSELL BADGLEY.

**LEGEND:**  
○ = FOUND PLSS MONUMENT AS NOTED  
④ = CORNER REFERENCE NUMBER  
( ) = RECORD PER M 90-48 - BAKER 1983  
— = PROPERTY LINES BLAZED & POSTED WITH 5 1/2" STEEL POSTS  
— = LINES MEASURED BUT NOT POSTED OR BLAZED

**BTS SURVEYING, INC.**  
348 SE JACKSON ST., ROSEBURG, OR 97470  
(541) 679-0866 adam@btsurveying.com

FOR: WEYERHAEUSER CO. SUTHERLIN 200  
JOB # 20-087  
FILE: 20-087.FLAIDWG  
SHEET 1 OF 1

REGISTERED PROFESSIONAL LAND SURVEYOR  
ORIGINATION  
RUSSELL BADGLEY 2016  
REVIEWS: B-S-H-2016

SCALE: 1" = 400'  
DATE: 1/4/2021

CS 67/57-11 3/3