

GOVERNMENT CORNER RESTORATION FORM

FILED

TOWNSHIP 24S RANGE 3W SEC. 22

PLSS # 460340

Date: 11/13/2023 By: 2
This survey consists of:

DOUGLAS COUNTY OREGON

DATE 10/31/23

Map: _____

Narrative: _____

Corner Rpt: CS 67/57-10

Corner Designation

CE 1/6 S22

DOUGLAS COUNTY
SURVEYOR

Monument(s) Found: (Condition and Source)

2 1/2" BRASS CAP ON 2"
Iron post set flush

___ Condition report

___ Not Found

Renewed

___ Unrecorded

___ Surveyed In

Previous Renewals

Baker 1983 M 90-48

Badgley 2021 M 177-68

MONUMENT DETAIL

T24S R3W

E 1/6
C ————— C
S22
PLS 1978
1983

Accessories Found

29" D. Fir N 33°15'W 82.7 FT Vis. Scribes
CE 1/6 S22 BT ON Double blaze

12" D. Fir S 73°30'W 103.7 FT Vis Scribes
CE 1/6 S22 BT ON double blaze

C.S. File 67/57-10

Monument Set (Procedure and Description)

MONUMENT DETAIL

New Accessories

Sketch of Monument, Accessories, and General Area

Location & Comments

OCRS COORDINATE SYSTEM
COTTAGE GROVE - CANYONVILLE
ZONE

COR. 15 ON EDGE
OF LOGGING SPUR
ROAD

N 231306.394

E 242972.017

Comp. Decline. 14 1/2° E
Agency DCSO
Party Chief S. F. KAUSE
Note keeper
Witnesses J. LORSONG

REGISTERED
PROFESSIONAL
LAND SURVEYOR

Ronald A. Quimby

OREGON
JULY 14, 1978
RONALD A. QUIMBY
1654

EXPIRES: 12/31/2024

CS 67/57-10

CORNER DESCRIPTIONS:

ALL NEW BEARING TREES HAVE DOUBLE BLAZED FACES WITH A BRASS WASHER STAMPED "BADGLEY PLS/2016" NAILED INTO THE LOWER BLAZE. BEARINGS ARE TAKEN TO THE CENTER OF THE TREE AT THE ROOT CROWN AND DISTANCES ARE MEASURED TO A NAIL IN THE ROOT CROWN AT THE SIDE AND CENTER OF THE TREE WITH A TOTAL STATION. ALL BEARING TREES HAVE A 6" RED BAND PAINTED AROUND THE TREE AND THE BLAZED FACE PAINTED ORANGE AND BEARING TREE SIGNS NAILED TO THE TREE

- S14/S15/S22/S23
A 1 5/8" IRON POST BY DAN BAKER IN 1983 PER M90-48, FIRMLY SET AND PROJECTING 10" ABOVE THE GROUND, WITH A 2 1/2" BRASS CAP MARKED:

PLSS ID NO. 500400

- FROM WHICH BEARING TREES BY BAKER IN 1983:
- A 27" D. FIR BEARS N.43°00'E., 35.8 FT LIGHTLY BURNED (N.7°E., 35.1')
 - A 27" D. FIR BEARS S.40°45'E., 24.4 FT LIGHTLY BURNED (S.39°E., 23.4')
 - A 38" D. FIR BEARS N.48°30'W., 20.6 FT LIGHTLY BURNED (N.46 1/2'W., 18.9')
 - AND NEW BEARING TREE:
 - A 17" D. FIR BEARS S.29°30'W., 54.4 FT MARKED "T24S R3W S22 BT" ON DOUBLE BLAZE

- W 1/16 S14/S23
A 1 5/8" IRON POST BY DAN BAKER IN 1983 PER M90-48, FIRMLY SET AND PROJECTING 18" ABOVE THE GROUND, WITH A 2 1/2" BRASS CAP MARKED:

PLSS ID NO. 520400

- FROM WHICH BEARING TREES BY BAKER IN 1983:
- A DESTROYED BURNED FIR BEARS N.56°00'E., 29.5 FT (N.57°E., 28.6')
 - A 13" D. FIR BEARS S.11°30'W., 31.8 FT MARKED "W 1/16 S23 BT" ON DOUBLE BLAZE
 - A 10" D. FIR BEARS N.44°00'E., 22.4 FT MARKED "W 1/16 S14 BT" ON DOUBLE BLAZE

- N 1/16 S22
A 2" IRON POST BY DAN BAKER IN 1983 PER M90-48, FIRMLY SET AND PROJECTING 18" ABOVE THE GROUND, WITH A 2 1/2" BRASS CAP MARKED:

PLSS ID NO. 440360

- FROM WHICH BEARING TREES BY BAKER IN 1983:
- A 66" BURNED D. FIR STUMP BEARS S.84°45'E., 33.3 FT (S.83°E., 30.0')
 - A 66" BURNED D. FIR STUMP BEARS N.30°30'W., 44.3 FT (N.29°W., 41.6')
 - AND NEW BEARING TREES:
 - A 11" D. FIR BEARS N.43°45'E., 21.2 FT MARKED "N 1/16 S22 BT" ON DOUBLE BLAZE
 - A 14" D. FIR BEARS S.16°50'E., 21.3 FT MARKED "N 1/16 S22 BT" ON DOUBLE BLAZE

- NE 1/16 S22
A 2" IRON POST BY DAN BAKER IN 1983 PER M90-48, FIRMLY SET AND PROJECTING 5" ABOVE THE GROUND, WITH A 3" BRASS CAP MARKED:

PLSS ID NO. 460360

- FROM WHICH BEARING TREES BY BAKER IN 1983:
- A 29" BURNED CEDAR STUMP 3 FT HIGH BEARS N.71°00'E., 26.7 FT (N.72°E., 25.4')
 - A 43" BURNED CEDAR STUMP 4 FT HIGH BEARS S.17°45'E., 13.3 FT (S.18°E., 11.1')
 - AND NEW BEARING TREES:
 - A 15" D. FIR BEARS N.41°15'E., 46.2 FT MARKED "NE 1/16 S22 BT" ON DOUBLE BLAZE
 - A 12" D. FIR BEARS N.84°15'E., 50.0 FT MARKED "NE 1/16 S22 BT" ON DOUBLE BLAZE

- N 1/16 S22/S23
A 1 5/8" IRON POST BY DAN BAKER IN 1983 PER M90-48, FIRMLY SET AND PROJECTING 13" ABOVE THE GROUND, WITH A 2 1/2" BRASS CAP MARKED:

PLSS ID NO. 500360

- FROM WHICH BEARING TREES BY BAKER IN 1983:
- A 63" CEDAR BEARS S.88°30'E., 30.5 FT W/HEALED BLAZE BURNED (S.88°E., 29.2')
 - A 25" HEALOCK STUMP 5 FT HIGH BEARS S.46°00'W., 8.0 FT W/HEALED DOUBLE BLAZE & BURNED (S.46°W., 7.4')
 - AND NEW BEARING TREE:
 - A 15" HEALOCK BEARS N.44°15'W., 30.0 FT MARKED "N 1/16 S22 BT" ON DOUBLE BLAZE

- NW 1/16 S23
A 1 5/8" IRON POST BY DAN BAKER IN 1983 PER M90-48, FIRMLY SET AND PROJECTING 6" ABOVE THE GROUND, WITH A 2 1/2" BRASS CAP MARKED:

PLSS ID NO. 520360

- FROM WHICH NEW BEARING TREES:
- A 13" D. FIR BEARS S.81°45'E., 23.1 FT MARKED "NW 1/16 S23 BT" ON DOUBLE BLAZE
 - A 19" D. FIR BEARS N.31°30'E., 59.1 FT MARKED "NW 1/16 S23 BT" ON DOUBLE BLAZE

THE CORNER LIES APPROXIMATELY 15 FT NORTH OF AN OLD SKD ROAD.

RECORD OF SURVEY
LOCATED IN THE NE 1/4 SECTION 22
& THE NW 1/4 OF 23, T.24S., R.3W., W.M.
DOUGLAS COUNTY, OREGON

- C1/4 S27
A 1 5/8" IRON POST BY DAN BAKER IN 1983 PER M90-48, FIRMLY SET AND PROJECTING 5" ABOVE THE GROUND, WITH A 2 1/2" BRASS CAP MARKED:

PLSS ID NO. 440340

- FROM WHICH BEARING TREES BY BAKER IN 1983:
- A 23" CEDAR SNAG BEARS N.49°30'E., 26.9 FT W/HEALED BLAZE (N.51°E., 25.2')
 - AND NEW BEARING TREES:
 - A 17" D. FIR BEARS N.53°30'E., 33.7 FT MARKED "C 1/4 S22 BT" ON DOUBLE BLAZE
 - A 18" MAPLE BEARS N.87°30'E., 45.6 FT MARKED "C 1/4 S22 BT" ON DOUBLE BLAZE
 - AND A 1" ALUMINUM PIPE SET BY MEYERHAUSER CO. AND REFERENCED BY BAKER IN 1983 BEARS N.87°55'43"E., 44.84 FT (N.87°52'58"E., 46.09')

- OF 1/16 S22
A 2" IRON POST BY DAN BAKER IN 1983 PER M90-48, FIRMLY SET FLUSH TO THE GROUND, WITH A 2 1/2" BRASS CAP MARKED:

PLSS ID NO. 460340

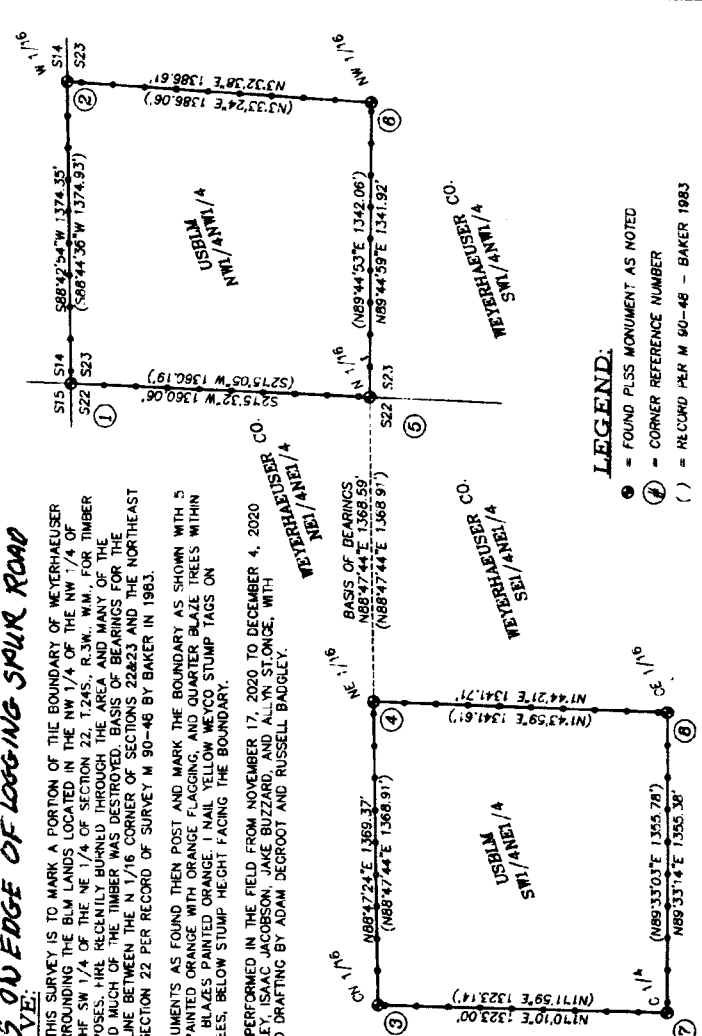
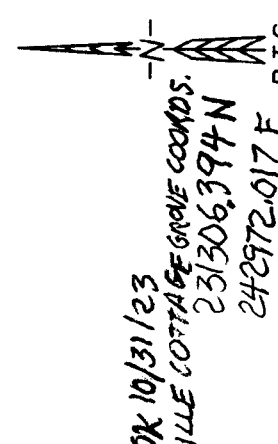
- FROM WHICH NEW BEARING TREES:
- A 29" D. FIR BEARS N.33°15'W., 82.7 FT MARKED "CE 1/16 S22 BT" IN DOUBLE BLAZE
 - A 12" D. FIR BEARS S.73°30'W., 103.7 FT MARKED "CE 1/16 S22 BT" ON DOUBLE BLAZE

- CORNER IS ON EDGE OF LOGGING SPUR ROAD
NARRATIVE:

THE PURPOSE OF THIS SURVEY IS TO MARK A PORTION OF THE BOUNDARY OF MEYERHAUSER CO. PROPERTY SURROUNDING THE BLM LANDS LOCATED IN THE NW 1/4 OF SECTION 22, SECTION 23 AND THE SW 1/4 OF SECTION 22, T24S., R.3W., W.M., FOR TIMBER MANAGEMENT PURPOSES. THE RECENTLY BURNED BLM LANDS ARE BEING USED FOR THE BEARING TREES AND MUCH OF THE TIMBER WAS DESTROYED. BEARS OF BEARINGS OR THE SURVEY WAS THE LINE BETWEEN THE N 1/16 CORNER OF SECTIONS 22&23 AND THE NORTHEAST 1/16 CORNER OF SECTION 22 PER RECORD OF SURVEY M 90-48 BY BAKER IN 1983.

I ACCEPT THE MONUMENTS AS FOUND THEN POST AND MARK THE BOUNDARY AS SHOWN WITH 5 1/2" STEEL POST PAINTED ORANGE, FLAGGING, AND QUARTER BLAZE TREES WITHIN 3-5 FEET OF LINE. BLAZES PAINTED ORANGE, 1 NAIL YELLOW W/CO STUMP TAGS ON MEYERHAUSER TREES, BELOW STUMP HEIGHT FACING THE BOUNDARY.

THIS SURVEY WAS PERFORMED IN THE FIELD FROM NOVEMBER 17, 2020 TO DECEMBER 4, 2020 BY RUSSELL BADGLEY, ISAAC JACOBSON, JAKE BUZZARD, AND ALLYN STONICE, WITH COMPUTATIONS AND DRAFTING BY ADAM DEGROOT AND RUSSELL BADGLEY.



- LEGEND:**
- = FOUND PLUS MONUMENT AS NOTED
 - ⊙ = CORNER REFERENCE NUMBER
 - () = RECORD PER M 90-48 - BAKER 1983
 - = PROPERTY LINES BLAZED & POSTED WITH 5 1/2" STEEL POSTS
 - = LINES MEASURED BUT NOT POSTED OR BLAZED

BTS SURVEYING INC.
348 SE JACKSON ST., ROSEBURG, OR 97470
FOR: MEYERHAUSER CO. SUTHERLIN 200
DATE: 1/4/2021
SCALE: 1" = 400'
JOB # 20-087
FILE: 20-087 PLAT.DWG
SHEET 1 OF 1

REGISTERED PROFESSIONAL LAND SURVEYOR
ISAAC JACOBSON
NOVEMBER 12, 2007
RUSSELL BADGLEY
2016
RENEWAL: 10-31-2020

CS 67/57-10 3/3