

TOWNSHIP 26S RANGE 1W SEC. 7 PLSS # 200560

Date: 6/26/2023 By: XC
This survey consists of:

DOUGLAS COUNTY OREGON

DATE 6-14-23

Map: _____
Narrative: _____
Corner Rpt. CS 67/56-34

DOUGLAS COUNTY
SURVEYOR

Corner Designation

N 1/6 57/58

Monument(s) Found: (Condition and Source)

3" BRASS CAP ON 2" IRON
PIPE UP 2" IN ROUGH
STONE MOUND

- Condition report
- Not Found
- Renewed
- Unrecorded
- Surveyed In

Previous Renewals

ESTABLISHED BY GARRETT
1964 CS 51/290-2 SET I.R
GRUBB 1981 M 87-37 SET
BRASS CAP

MONUMENT DETAIL

T 26S R1W
N 1/6
57/58
1981
PLS 397

Accessories Found

VERY BURNED ROTTED 36" X 4" D. FIR STUMP
N 52°E 16.8 FT
BURNED - SAWN 36" X 2 1/2 FT CEDAR STUMP
S 50°W 35.3 FT FULL HEATED SINGLE BLAZE
ADD 3 1/2" MAG NAIL TOP CENTER
BURNED - DEAD 15" D. FIR N 56°E 39.2 FT
(REC 39.8 FT) FULLY HEATED SINGLE BLAZE
ADD 3 1/2" MAG NAIL RIGHT SIDE CENTER

UNTIL PUT IN WEST VENTURE

By
Baughman Technical Service, Inc.
 5157 N Limpqua Hwy.
 Roseburg Or. 97470

April, 1981
 CADASTRAL SURVEY - GLIDE No. 11412
 Contract No. 53-0471-1-10
 SECTION 8, T. 26 S., R. 1 W., M. 4



LEGEND

- — Brass Cap Found
- — Corner Found, Brass Cap Set
- — Corner Set
- True Line Posited
- — Corner Index No.



SURVEY NARRATIVE:
Survey History:

Section 8 of T. 26 S., R. 1 W., M. 4 was originally surveyed by Fred Menach, U. S. Deputy Surveyor, under Contract No. 797-12 of the West Line and the East-West centerline of Section 8 and set the N. 1/16, S. 7/8 S. 8 (CS 31290). In 1970, Vernon Tracy of the Douglas County Surveyor's Office perpetuated Menach's original North, South, East and West 1/4 Section Corners (CS 52777). In 1977, Maurice E. Farr, G.P.E. 5188, of the U. S. Forest Service, surveyed the East line of Section 8 under his survey of Section 9, (M 63-20 & CS 587138).

Survey Procedure:

The purpose of the survey was to monument the corners and mark the boundaries of the private lands in Section 8. Original G.L.O. 1/4 Section Corners controlled the section subdivision and Garrett's M. N. 1/16 S. 7/8 S. 8 controlled the position of the North line of the S 1/2, NW 1/4. A closed loop random line traverse was run between all found corner points. Angles were measured with a Wild T-1-A theodolite and distances with a heateck tachometer 3805 E.D.M. or a 300 foot steel tape. The survey was closed before. Station Class B Standards of 1/20000 minimum linear closure before. Property lines were posted with Carsonite Posts with U. S. F. S. 54-2 signs. Property boundary National Forest, land Rolling This Sign, attached.

CORNER DESCRIPTIONS:

All new bearing trees have a double blaze with a brass washer stamped U.S. 897 nailed into the lower blaze, a 6" red band painted around the tree U. S. F. S. 54-2 signs and lower blazes painted red. All bearing trees have a (B) sign attached and a U. S. F. S. 54-4 (Warning against despoiling monument) or a U. S. F. S. 34-9 (Land Survey Monument) sign attached.

T26S, R1W, 200560 REVENUE 6/14/23 APR 15 1981
 COUNTY SURVEYOR
 DOUGLAS COUNTY, ORE.

NOT SEEN INSIDE B.C. MAP?

1. 5/8" iron rod projecting 12" above the ground
 Set: 2" X 30" iron pipe, 24" in the ground, in a 2 1/2" diameter
 rough mound of stone with a 3" brass cap marked:
 T26S R1W S8
 57 1/4 S8
 1981
 MONUMENT ON BOTTOM OF S. HOLLOW
 DRAWN LARS BURNED METEOR, NE QUAD,
 DRAWN LARS BURNED METEOR, NE QUAD,
 3" BRASS PROT 2"

VERY NOTICED BURNED
 36" X 4" STUMP FROM WHICH BEARING TREES MARKED BY GARRETT IN 1964: REST CLEAR CUT
 BURNED STUMP
 BEARS N. 52° W., 16.8 FT. (RECORD N. 53° W., 14.5 FT.)
 A 21" Cedar with scribe marks visible on a partially healed blaze
 bears N. 50° W., 35.3 FT. (RECORD N. 53° W., 35.2 FT.) FHSB
 and a new bearing tree: 3" X 30" iron pipe, 22" in the ground, with a 3" brass cap
 marked:
 T26S R1W
 N 1/16 S8
 1981
 PLUS 397

3. 2" X 30" iron pipe, 22" in the ground, with a 3" brass cap
 marked:
 T26S R1W
 N 1/16 S8
 1981
 PLUS 397

from which new bearing trees:
 a 29" Douglas fir, with opened blaze, bears N. 41° W., 32.2 ft.
 (Record 31.0 ft.)
 and bearing trees marked by V. Tracy, Douglas County Surveyor's
 Office in 1970:
 a 9" Douglas fir with healed blaze bears N. 65° W., 6.7 ft.
 a 10" Douglas fir with healed blaze bears S. 17° E., 11.5 ft.
 (Record S. 19° E., 12.5 ft.)

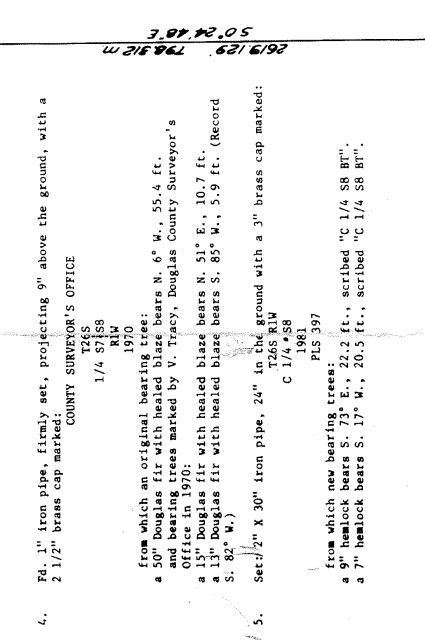
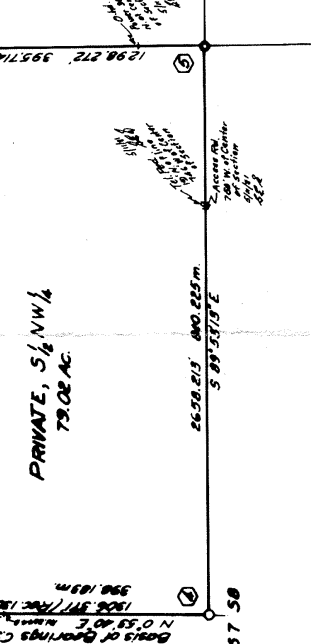
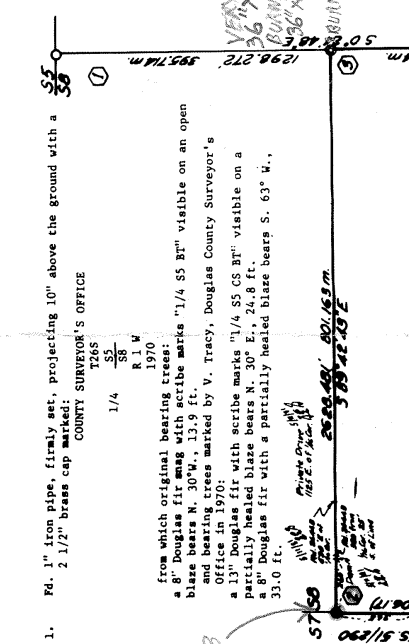
4. 1" iron pipe, firmly set, projecting 9" above the ground, with a
 2 1/2" brass cap marked:
 COUNTY SURVEYOR'S OFFICE
 T26S
 1/4 S8 S9
 R1W
 1970

5. 2" X 30" iron pipe, 24" in the ground with a 3" brass cap marked:
 COUNTY SURVEYOR'S OFFICE
 T26S R1W
 C 1/4 S8
 1981
 PLS 397

6. 1" iron pipe, firmly set, projecting 11" above the ground with a
 2 1/2" brass cap marked:
 COUNTY SURVEYOR'S OFFICE
 T26S
 1/4 S8 S9
 R1W
 1970

7. 1" iron pipe, firmly set, projecting 20" above the ground and
 6" above a 2 1/2" diameter mound of stone with a 2 1/2" brass cap
 marked:
 COUNTY SURVEYOR'S OFFICE
 T26S
 1/4 S8
 R1W
 1970

from which the original bearing trees:
 a 23" Douglas fir with healed blaze bears N. 53° E., 14.5 ft. (Record
 N. 50° E.)
 a 15" Douglas fir with healed blaze bears S. 67° W., 19.1 ft. (Record
 S. 65° W.)
 and a bearing tree marked by V. Tracy, Douglas County Surveyor's
 Office in 1970:
 a 12" Douglas fir with scribe marks "1/4 S17 CS 87" visible on a partially
 healed blaze bears S. 68° W., 36.4 ft. (Record S. 64° W., 39.0 ft.)



CS 67156-34 3/3