

GOVERNMENT CORNER RESTORATION FORM

FILED

TOWNSHIP 26S RANGE 1W SEC. 7 PLSS # 120570

Date: 6/26/2023 By: X

This survey consists of:

Map: \_\_\_\_\_

DOUGLAS COUNTY OREGON

DATE 6-13-23

Narrative: \_\_\_\_\_

Corner Rpt: 67/56-33

Corner Designation

CNNW 1/64

DOUGLAS COUNTY  
SURVEYOR

Monument(s) Found: (Condition and Source)

3" BRASS CAP ON 2" ID  
Iron Pipe up 12"

\_\_\_ Condition report

\_\_\_ Not Found

\_\_\_ Renewed

\_\_\_ Unrecorded

\_\_\_ Surveyed In

Previous Renewals

SET by GARRETT 1972  
per M 47-7

MONUMENT DETAIL

T26S R1W  
S7  
CN  
NW  
1/64  
1972  
RPLS 544

Accessories Found

Very BURNED Rotted 6" X 5 FT FIR stub  
S 16° W 7.8 FT (REC 8.1 FT) blaze burned

BURNED - DEAD 22" D. FIRE N 71 1/2° W 18.7 FT  
Fully Healed Double BLAZE ADD 3 1/2"  
NAIL RIGHT SIDE CENTER

Steel Fence Post West 4.7 FT with  
WITNESS & BOUNDARY SIGNS

C.S. File 67/56-33

1/3

New Accessories

BURNED DEAD 12" D. FIR S66°E 25.8 FT  
3 1/2" MAG NAIL RIGHT SIDE CENTER TREE  
NOT BLAZED OR SCRIBED.

Sketch of Monument, Accessories, and General Area

Location & Comments

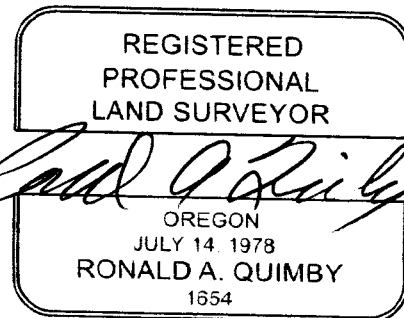
CORNER ON MODERATE EAST  
SLOPE APPROX 100 FT WEST  
OF GRAVEL ROAD BURNED  
OLD GROWTH EAST BURNED  
REPROD WEST

AREA BURNED  
9-2020

OCRS COORDINATE SYSTEM  
COTTAGE GROVE - CANYONVILLE

Comp. Decline. 19 1/2° E  
Agency DCGO  
Party Chief S. FRAUSE  
Note keeper  
Witnesses J. LORSUNG

180064.612 N  
287591.891 E



EXPIRES: 12/31/2024

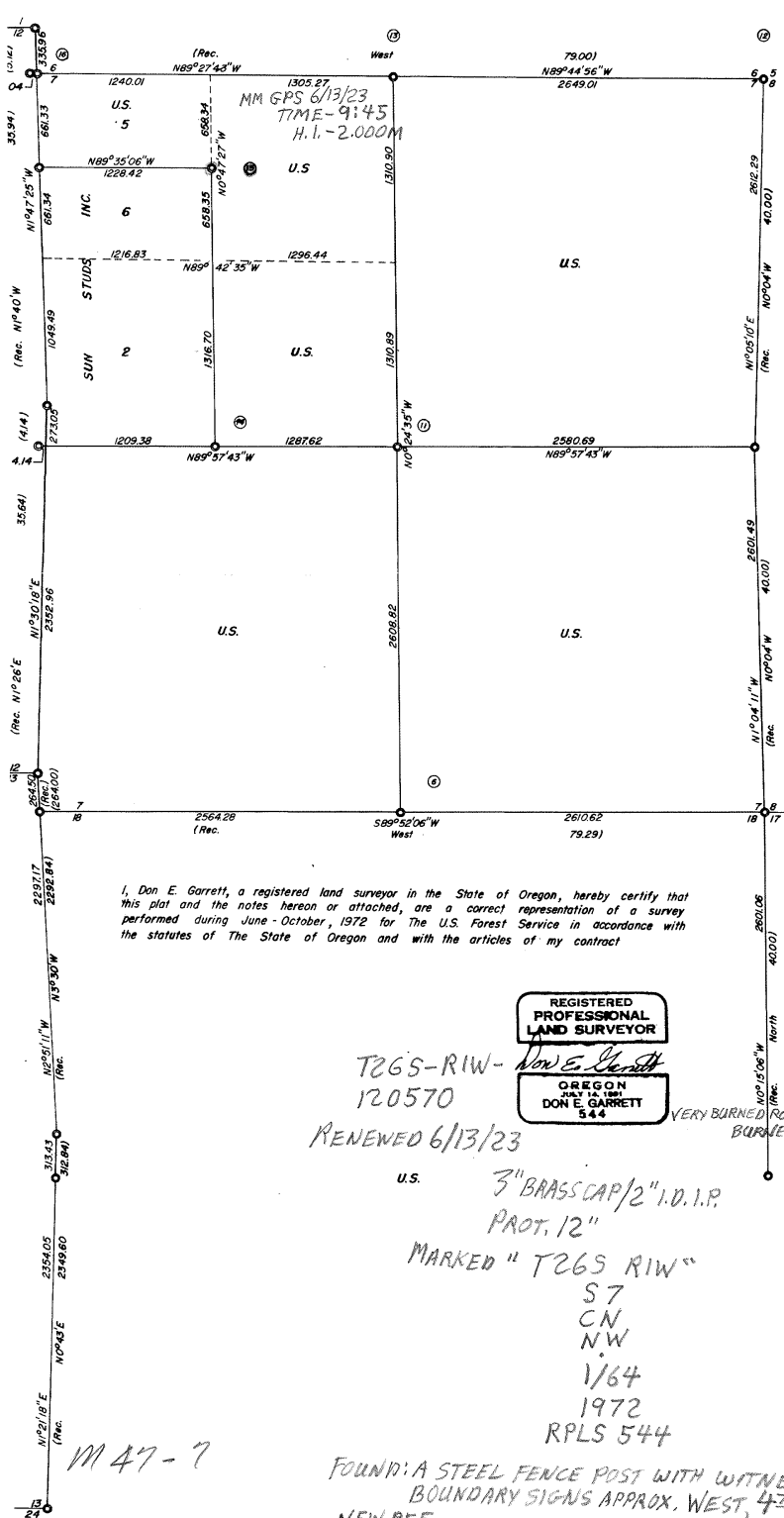
SURVEY FOR THE  
UNITED STATES OF AMERICA

Sections 7, 8, 17 & 18, Township 26 South, Range 1 West, Willamette Meridian

October 1972

Scale 1" = 600'

GLIDE LAND SURVEY NO. 1 CONTRACT NO. 003585N.  
Field Books Referenced Under Contract No. 003585N Books 1, 2, 3 & 4.  
Monuments set consist of a 2" X 3/8" galvanized iron pipe, flared at the bottom, with a 3" brass cap riveted to the top.  
Bearings are based on solar observations taken September 2 & 16, 1972.



I, Don E. Garrett, a registered land surveyor in the State of Oregon, hereby certify that this plat and the notes hereon or attached, are a correct representation of a survey performed during June - October, 1972 for The U.S. Forest Service in accordance with the statutes of The State of Oregon and with the articles of my contract

REGISTERED  
PROFESSIONAL  
LAND SURVEYOR  
OREGON  
DON E. GARRETT  
544

T265-RIW-  
120570  
RENEWED 6/13/23  
3" BRASS CAP 1/2" I.D. I.P.  
PROT. 12"  
MARKED "T265 RIW"  
S7  
CN  
NW  
1/64  
1972  
RPLS 544

M 47-7

CS 47/56-33

3/3

FOUND: A STEEL FENCE POST WITH WITNESS  
BOUNDARY SIGNS APPROX. WEST, 4 FT.  
NEW REF.  
A BURNED DEAD 12" D. FIR WITH A 3 1/2" MAG NAIL R.S.C. BEARS S66°E, 25 1/2 FT, M 47;  
DECLINATION 14°12'0"E  
MONUMENT ON MODERATE EAST SLOPE 100 FT WEST FROM GRAVEL R.D. BURNED APPROX. WEST

- ① Found Brass Cap Marked County Surveyors Office, S13, S24, T265, R2W, 1963  
20" Fir Bears S27°W 79' (Chopped Out, No Scribe Showing)  
9" D. Fir Bears S63°W 11.4' (Shows Scar)  
20" D. Fir Bears N67°W 9.2'
- ② Set Brass Cap Marked T265, RIW, 1/4 S18, 1972, RPLS 544  
14" Fir Bears N32°E 58.4' Scribed 1/4 S18 BT  
13" Fir " S21 1/2°E 60.2' Scribed 1/4 S18 BT
- ③ Set Brass Cap Marked T265, R2W, 1/4 S13, 1972, RPLS 544  
8" Fir Bears S2°W 128.5' Scribed 1/4 S13 BT  
6 Ft. Steel Fencpost With U.S. Forest Service Signs Nos. 54-2 & 54-4  
Bears N3°W 5.0'
- ④ Set Brass Cap Marked T265, S7, S18, RIW, T265, R2W, S13, 1972, RPLS 544  
8" Fir Bears N58°E 29.1' Scribed T265, RIW, S7, BT  
7" Fir Bears S18 1/2°E 26.9' Scribed T265, RIW, S18, BT
- ⑤ Found Brass Cap Marked County Surveyors Office, S12, S13, T265, R2W, 196  
9" Fir Bears S45°W 21 Lks. (Shows Scar)  
28" Fir Bears N54°W 34.9' (Shows Bark Scribe)
- ⑥ Set Brass Cap Marked T265, RIW, 1/4, S7, S18, 1972, RPLS 544  
16" Fir Bears N54 3/4°W 119' Scribed 1/4 S7 BT  
15" Fir Bears S46 1/4°E 6.2' Scribed 1/4 S18 BT
- ⑦ Found Brass Cap Marked County Surveyors Office 1/4 S17, S18, T265, RIW,  
9" D. Fir Bears N54°E 24.2' (Shows Scribe)  
6" D. Fir Bears N89°W 9.2'
- ⑧ Found Brass Cap Marked County Surveyors Office, T265, RIW, 1/4 S8, S17,  
18" Fir Bears N50°E 14.5' (Shows Scar)  
15" Fir Bears S65°W 19.1' (Shows Scribe)  
12" Cedar Bears S64°W 39.0'
- ⑨ 6" Below Road Surface Set Brass Cap Marked T265, RIW, S7, S8, S17, S18, 1972  
15" Fir Bears S66°W 32.5' Scribed T265 RIW S18 BT  
9" Fir Bears N32°W 36.7' Scribed T265 RIW S7 BT  
18" Fir Bears N27°E 21.0' Scribed T265 RIW S8 BT  
8" Fir Bears S55 1/2°E 78.4' Scribed T265 RIW S17 BT
- ⑩ Found Brass Cap Marked County Surveyors Office 1/4 S7, S8, T265, RIW, 19  
50" Fir Bears N6°W 55.4' (Shows Scribe)  
12" Fir Bears S82°W 5.9' " "  
14" Fir Bears N5°E 10.7' " "
- ⑪ 60" ± Above Road Set Brass Cap Marked T265, RIW, C1/4, S7, 1972, RPLS :  
15" Fir Bears S28°W 12.5' Scribed C1/4 S7 BT  
25" Fir Bears N36°E 23.2' Scribed C1/4 S7 BT
- ⑫ Found Brass Cap Marked County Surveyors Office T265, RIW, S5, S6, S7, S8, 15  
18" D. Fir Bears N49°W 14.2' (Shows Scribe)  
12" D. Fir Bears N17°E 13.7' " "  
14" D. Fir Bears S67°E 6.6' " "  
8" D. Fir Bears S20°W 18.7' " "  
GBT: 14" Fir Bears N33°E 57.4'  
" 40" Fir Bears S4 1/2°W 71.3'  
" 60" Fir Bears S53°E 83.2'
- ⑬ Found Brass Cap Marked County Surveyors Office T265, RIW, 1/4 S6, S7, 197  
16" Cedar Bears N1°W 6.1' (Shows Scribe)  
11" Fir Bears S40°E 6.8'
- ⑭ Set Brass Cap Marked T265, RIW, C-C W1/6, S7, 1972, RPLS 544  
7" Fir Bears S34°W 3.3' Scribed CW 1/6 S7 BT  
8" Fir Bears N6°E 19.8' Scribed CW 1/6 S7 BT
- ⑮ Set Brass Cap Marked T265, RIW, CN NW 1/64, S7, 1972, RPLS 544  
6" Fir Bears S16°W 8.7' Scribed CN NW 1/64 S7 BT  
9" Fir Bears N71 1/2°W 18.7' Scribed CN NW 1/64 S7 BT  
ADJ. S12 - MAG NAIL R.S.C. 22 1/2"
- ⑯ Set Brass Cap Marked T265, S6, S7, RIW, T265, R2W, S12, 1972, RPLS 544  
13" Fir Bears N6°E 10.1' Scribed T265 RIW S6 BT  
11" Fir Bears S48 1/2°E 32.8' Scribed T265 RIW S7 BT
- ⑰ Found Brass Cap Marked County Surveyors Office T265, R2W, S1, S12, 1961  
13" Fir Bears N30°W 21.5' (Shows Scar)  
12" Cedar Bears S86°W 8.4' (Shows Scribe)
- ⑱ CC S6, S7, T265, RIW Found Broken Basalt Stone, 16" X 12" X 6"; Set Approx.  
in Ground, 1/2" C. Pipe in Place on East Side of Stone.  
9" Madrone Bears S2°E 28 Lks. Tree has been opened. No Scribing for  
See 1968 Cadastral Resurvey of the East Line of Sect. 12, T265, R2W.
- ⑳ Set Brass Cap Marked T265, RIW, N-N 1/64, S7, 1972, RPLS 544  
14" Madrone Bears N12°E 14.1' Scribed NN 1/64 S7 BT  
11" Chinquapin Bears S24°E 14.9' Scribed NN 1/64 S7 BT
- ㉑ Found Brass Cap Marked County Surveyors Office, T265, R2W, 1/4 S12, 1961  
16" Cedar Bears N80°W 18.0'  
21" Fir Bears S43°W 61.2'
- ㉒ Found Brass Cap Marked County Surveyors Office, T265, RIW, 1/4 S7, 1961  
22" Chinquapin Bears N29°E 48.2' (Shows Scribe)  
8" Cedar Bears S87 3/4°E 39.3'