

OCRS N 126172.110
E 234126.227

MM GPS

11/9/21

TOWNSHIP 28 RANGE 03 POINT IDENTIFIER # 300640

PRIMARY CORNER DESCRIPTION 1/4 Cor Secs 4 & 5

| | | |
|-------------|-------------------|--------------------------|
| Alias _____ | Description _____ | FILED |
| Alias _____ | Description _____ | Date: 3/21/2023 By: X |
| Alias _____ | Description _____ | This survey consists of: |
| Alias _____ | Description _____ | Map: _____ |

Narrative: _____
 Corner Pt: CS 47/55-52
 DOUGLAS COUNTY SURVEYOR

GLO survey by Wm. N Gibb, Deputy Surveyor, under contract No. 783, dated Dec. 3, 1908 - (DCSO records Vol. 13 Page 106)

 Set granite stone 6x10x14", 10" in the ground for 1/4 sec. cor. mkd. 1/4 on W face, from which
 A hemlock, 18" dia., bears N.66°E., 27 lks., mkd: 1/4 S4 BT.
 A fir, 30" dia., bears N.45°W., 27 lks., mkd: 1/4 S5 BT.

Douglas Co. Surveyors Office - James W. Byron, Deputy - John Powell - Wm. Stoffel - Aug. 1962 - C.S. File 52/126-34

~~Found - Stump of orig. NE BT & orig. 30" now 36" fir, previously opened, shows good scribing N.45°W., 17.8 ft. OPEN REVEALD FACE FIND SCRIBING~~
 NOW ROTTED 30" x 3" TALL STUMP
 NOT FOUND - Also find at corner stone as recorded.
 Note - Logging road is about 200 ft East & small stream about 30 ft. south of 1/4 corner
 Set - Brass cap at cor. & alongside corner stone & mkd: COUNTY SURVEYORS OFFICE, 1962 1/4 S5/S4 T28S R3W
 New BT - 7" hemlock bears N.18 1/2°E., 64.9 ft. scribed 1/4 S4 CS
 GONE BT. BOTH GONE AREA LOGGED AND FLOODED OVER YEARS

NEW MONUMENT SET AT RECORD BEARING AND DIST. FROM FOUND ORIGINAL NW BEARING TREE STUMP:
 A 2 1/2" DIA. BRASS CAP ON A 32" x 1" I.P. SET PROTRUDING 8" FROM GROUND IN A ROUGH MOUND OF STONE. BRASS CAP IS MARKED
 " DOUGLAS COUNTY SURVEYORS OFFICE"
 T 28 S R 3 W
 1/4
 S5 | S4
 2021

NEW REFS
 A 1" DIA COPPER DRILL CAP MARKED "SURVEY MARK" SET IN CONCRETE FOOTING FOR SOUTHERLY GATE POST OF STEEL FOREST ACCESS RD. GATE;
 BEARS N 6 1/2° E, 71 1/2 FT. DISTANT.

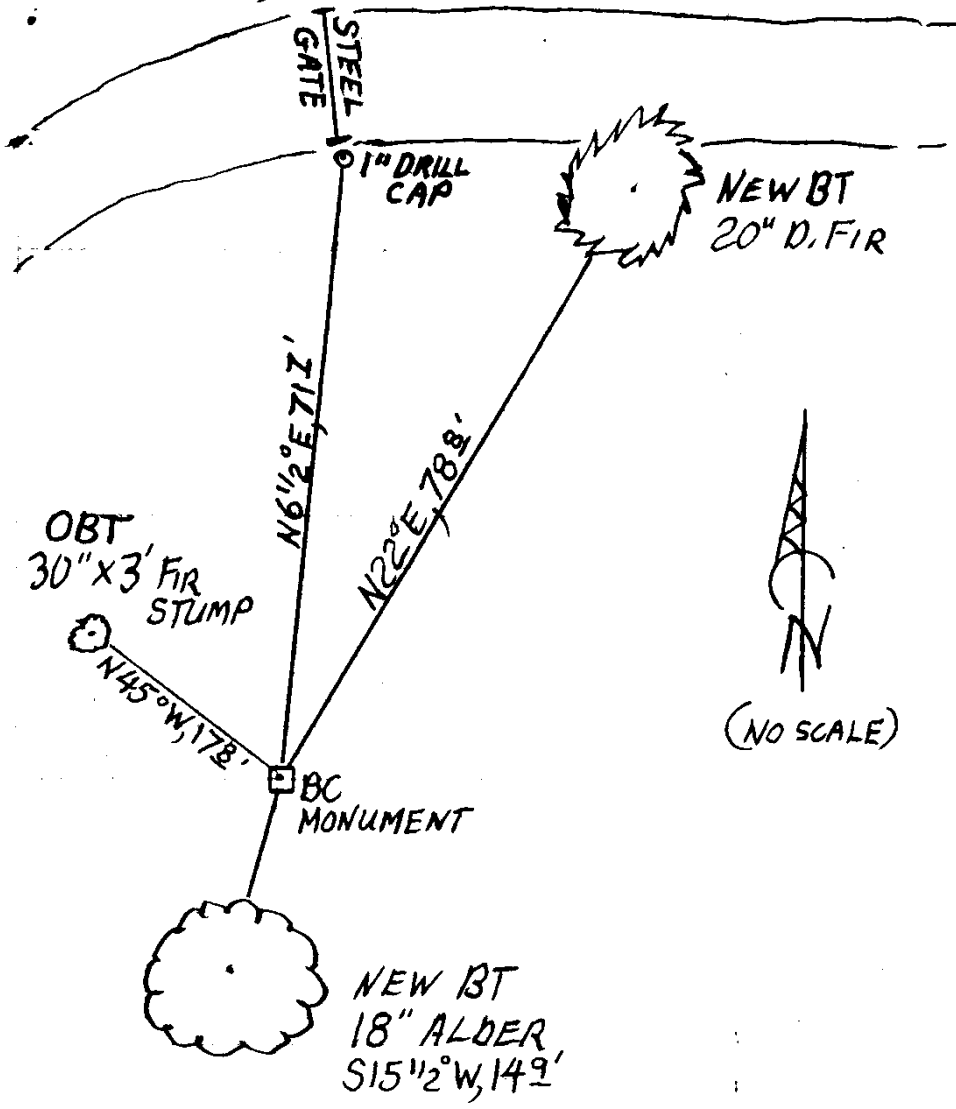
A 20" DIA. D. FIR SCRIBED "1/4 S4 CS" "BT" ON A DOUBLE BLAZE;
 BEARS N 22° E, 78 1/2 FT. DISTANT.

AN 18" DIA. ALDER SCRIBED "1/4 S5" "CSBT" ON A DOUBLE BLAZE;
 BEARS S 15 1/2° W, 14 1/2 FT. DISTANT.

42 C.S. FILE 67/55-52

11/09/21

T28S, R03W, 300640



C.S. FILE 67 | 55-52
2/2