

CORNER RENEWAL

DATE 8/25/21

RENEWAL STATUS RENEWED T-R-PLSS T205, R8W, 200440

MONUMENT FOUND:
FROM 1983
DEAN AND RUPPERT
SURVEY

A 2 1/2" DIA. BRASS CAP MARKED
ON A 1" I.D. IRON PIPE IS SET
APPROX. 4" BELOW SOUTH ROAD
SHOULDER SURFACE.

" T205 R8W "
1/4
S18 | S17
LS 1808
1983

NEW BEARING OBJECTS

8" GALVANIZED SPIKE NAIL, SET JUST BELOW FLUSH IN A.C.
RD. SURFACE:

BEARS S88°E, 20° FT. DISTANT.

8" GALVANIZED SPIKE NAIL, SET AS ABOVE:

BEARS N3°W, 20° FT. DISTANT.

FILED

Date: 11/8/2022 By: JC
This survey consists of:
Map: _____
Narrative: _____
Corner Rpt: CS 67/54-60

THE VERY NE CORNER OF A CONCRETE BRIDGE FOR THE SMITH
RIVER ROAD CROSSING OF SOUTH SISTER CREEK:

BEARS N74°W, 247 ± FT. DISTANT.

DOUGLAS COUNTY
SURVEYOR

HISTORICAL OBJECTS

FROM 1955
BPR RENEWAL

MAGNETIC SIGNAL FROM POSSIBLE RAILROAD SPIKE FOUND
IN 1983 SURVEY (NOW BURIED UNDER A.C.). MONUMENT NOT
SPECIFIED IN 1955: BEARS N09°14'W, 16 ± FT. DISTANT.
A FIR STUMP 45" DIA. X 3 FT. TALL, THE SE B.T. FOR THE 1955 CORNER
LOCATION:

BEARS S41°E, 67 ± FT. DISTANT

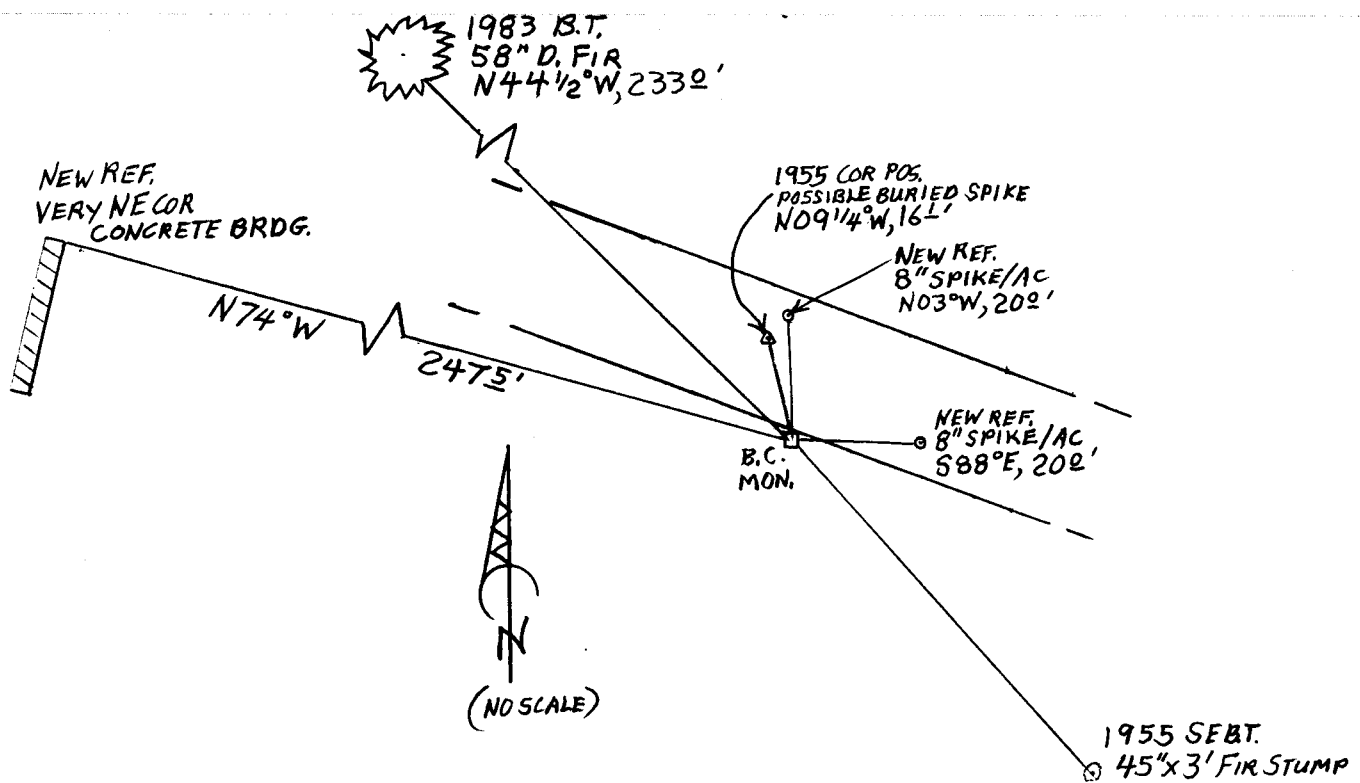
FROM 1983
DEAN AND RUPPERT
SURVEY

A 58" DIA. D. FIR WITH A FULLY HEALED BLAZE:
BEARS N44°12'W, 233 ± FT. DISTANT

LOCATION AND COMMENTS

MONUMENT IN SOUTH SHOULDER OF SMITH RIVER RD. JUST OFF EDGE OF A.C.
SURROUNDING AREA IS VERY FLAT GROUND WITH OLDER REPROD FIR FOREST.

SKETCH



DECLINATION: 14 3/4° E

CREW: CREW CHIEF - S. J. FLAUSE
TECHNICIAN - J. A. LORSUNG

COORDINATES:

TOWNSHIP 20 RANGE 08 POINT IDENTIFIER # 200440

PRIMARY CORNER DESCRIPTION 1/4 Cor. Secs. 17 & 18

Alias _____	Description _____
Alias _____	Description _____
Alias _____	Description _____
Alias _____	Description _____

GLO survey by Wm. P. Wright, Deputy Surveyor, under contract #486, dated Aug. 1, 1883 - (DCSO records Vol. 2 Page(s) 494)

Set post, 4" dia., 4 ft. long, with marked stone, 12" in ground, for qr. sec. cor. marked 1/4 S on W face; from which
 Fir, 40" dia., bears N.87°E., 58 lks., mkd: 1/4 S BT.
 Fir, 40" dia., bears S.62°W., 9 lks., mkd: 1/4 S BT.

BLM dependent resurvey by Thomas A Tillman, Raymond M. Bicknell, Han W. Thielsen & Joseph S. Gawron, Cadastral Engineers, under Group No. 305 surveyed Aug. 1953 thru Sept. 1954 - (DCSO recs. Vol. 29 Page(s) 12385)

Point for the 1/4 sec. cor. of secs. 17 & 18, at proportionate distance; there is no remaining evidence of the orig. corner. Set an iron post, 3 ft. long, 1" dia., 28" in the ground with brass cap marked:

1/4
 S 18|S 17
 1954

from which

A fir, 14" dia., bears N.53°E., 42 lks., mkd: 1/4 S17 BT.
 A fir, 10" dia., bears S.73 1/4°W., 11 lks., mkd: 1/4 S18 BT.

Bureau of Public Roads, L.A. Copenhaver - Oct. 17, 1955.- C.S. File 42/27

This corner has been replaced & marked 1/4 S18|S17 1954 and covered with one foot of cushion material.

Two BT posters & 1 location poster were obtained from the BLM & placed as follows:

~~GONE~~ - BT 10" Alder 65.6 ft., N.77°00'E., to 1/4 cor.

~~SEE #2~~ BT 16" Fir 80.8 ft., N.35°00'W., to 1/4 cor.

Location poster on 10" fir with tack showing location of the

~~GONE~~ tree to the 1/4 corner & scribed 167.4 ft. West to corner.

Also, an old location poster is on a 48" stump which is scribed "T20S R8W S18, 8 1/4 tallys S to corner". A tack shows approx. location of stump to corner. The notice bears the

markings:

Robert Dean, LS 1808 & Wm. J. Ruppert, LS 866 - For: International Paper Co. - 3/30/1983 - M93-80 & C.S. 58/204 (N)-7

Set - 1 1/4" x36" galv. iron pipe with 2 1/2" brass cap mkd: T20S R8W 1/4 S18 S17 LS 1808 1983, in road shoulder, 6" deep from which:

New - ^{58"} ~~43"~~ D.Fir scribed 1/4 S18 BT bears N.44°30'W., 233.0 ft.

continued next page FHB

TOWNSHIP 20 RANGE 08 POINT IDENTIFIER # 200440

PRIMARY CORNER DESCRIPTION 1/4 Cor. Secs. 17 & 18

Alias _____	Description _____
Alias _____	Description _____
Alias _____	Description _____
Alias _____	Description _____

CONF
 21" D.Fir scribed 1/4 S17 BT bears N.58°01'E., 96.6 ft.
 Fd. - From corner: a railroad spike in the center of pavement
 of Oxbow Access Rd. bears N.9°15'W., 16.11 ft., from *SOUND CHK*
DID NOT EXPOSED
 which BTs from 1955 ren:
STUMP 45x3' 30" D.Fir, healed scar, bears S.35°07'E., 82.0 ft.
 (rec. S.35°E., 80.8 ft.) *S44°E, 67' FROM BCMON.*
CONF 21" Alder, bark scribed 1/4 S18 BT, bears S.75°31'W.,
 65.4 ft. (rec. S.77°00'W., 65.6 ft.)

8" GALV. SPIKE NAIL SET JUST BELOW FLUSH IN AC RD. SURF.
S88°E, 20° FT. DIST
NAIL AS ABOVE N3°W, 20° FT. DIST

THE VERY NE COR OF CONCRETE BRDG FOR SMITH RIVER RD,
CROSSING OF SOUTH SISTER CRK BEARS N74°W, 2475 FT DIST

414

CS 67/54-60