

CORNER RENEWAL

DATE 8/18/21

RENEWAL STATUS RENEWAL T-R-PLSS T195, R10W, 540200

FROM 1971 USFS RENEWAL

MONUMENT FOUND:

A 2 1/2 INCH DIA. BRASS CAP, MARKED AS DESCRIBED,
ON A 2 INCH I. D. IRON PIPE, PROJECTING 12 INCHES ABOVE
GROUND.

NEW BEARING OBJECTS

48" D. FIR

TREE HAS LARGE HEALED SCAR FACING CORNER,
COULD BE FROM BLAZE SEARCH. WE ADD SIDE-CENTER NAIL.
TREE BEARS N 68° E, 22 1/2 FT. DISTANT.

USFS METAL
WITNESS POST
AND SIGN

BEARS EAST, 35 FT. DISTANT

FILED

Date: 11/8/2022 By: SC
This survey consists of:

Map: _____

Narrative: _____

Corner Rpt: CS 67/54-59

DOUGLAS COUNTY
SURVEYOR

HISTORICAL OBJECTS

FROM 1899
GLO SURVEY
FROM 1971
PROCHNAU SURVEY

A 39" DIA. D. FIR WITH A PREVIOUSLY OPENED NOW REHEALED
BLAZE; BEARS S 21° E, 38 1/2 FT. DIST. (AS PER RECORD)

A 52" DIA. D. FIR WITH A FULLY HEALED BLAZE, WE ADD
SIDE-CENTER NAIL.

TREE BEARS N 25° E, 42 1/2 FT. DIST.

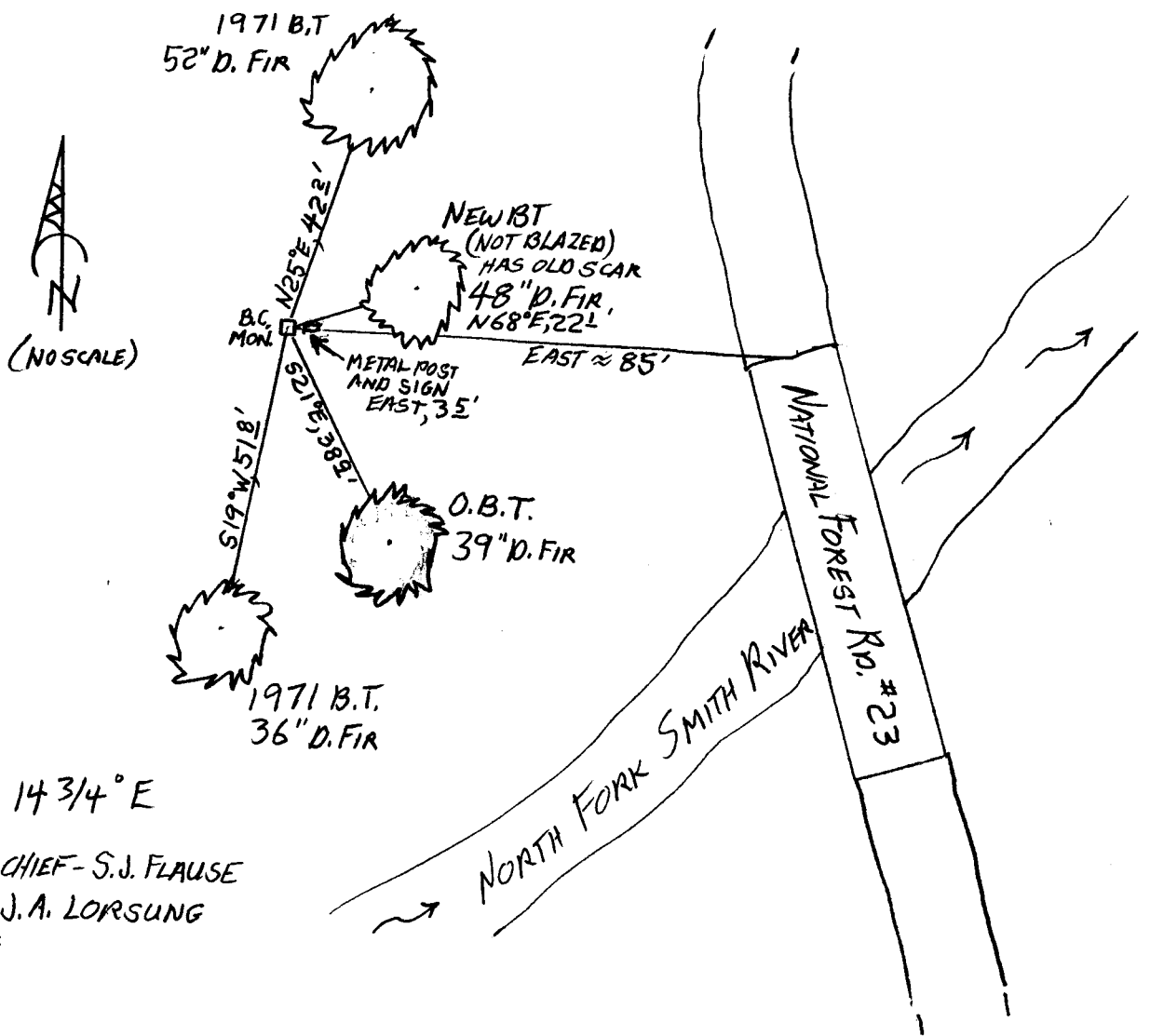
A 36" DIA. D. FIR WITH A FULLY HEALED BLAZE, WE ADD
SIDE-CENTER NAIL.

TREE BEARS S 19° W, 518 FT. DIST.

LOCATION AND COMMENTS

MONUMENT IS NEAR BOTTOM OF SE FACING SLOPE IN AN OLD GROWTH FIR FOREST
 MONUMENT IS APPROX 85 FT WEST FROM SOUTHERLY END OF NATIONAL
 FOREST RD. 23 BRIDGE OVER THE NORTH FORK OF SMITH RIVER.

SKETCH



DECLINATION: 14 3/4° E

CREW: CREW CHIEF - S.J. FLAUSE

TECHNICIAN - J.A. LORSUNG

COORDINATES:

TOWNSHIP 19 RANGE 10 POINT IDENTIFIER # 540200

PRIMARY CORNER DESCRIPTION 1/4 Cor. Secs. 26 & 35

Alias _____	Description _____
Alias _____	Description _____
Alias _____	Description _____
Alias _____	Description _____

GLO Survey by Henry L. Chandler, U.S. Deputy Surveyor, under Contract #705 dated April 14, 1899 - (DCSO records Vol. 1 Page(s) 283)

The 1/4 sec. cor., established on former survey*, which is a Fir tree, 7" dia., mkd: 1/4 S26 on N & 35 on S sides; from which DIFFERENT TREES N 68° E 22 44 22 L HELEN BLZ SEARCH? A Fir, 8" dia., bears N.64°W., 34 lks., mkd: 1/4 S BT. A Fir, 18" dia., bears S.21°E., 59 lks., mkd: 1/4 S BT.

THIS IS NEW BT D. FIR 48" D. FIR 39"*

1899 survey is a corrective resurvey of Chandler's 1895 survey. The Orig. 1895 survey was not accepted but some corners were accepted on a case by case basis. Per Eugene's & Coos Bay's BLM offices. 38 2 v

Douglas Co. Surveyors Office - Vernon "Ray" Tracy - June 1969 - C.S. File 53/66-38

Reported as not found. Possibility on this cor. good if you had line*- good calls - I could find no blazes or any line. There is quite a bit of old growth in this area. I tried to match up calls for line by dist. between Smith River.

James W. Prochnau - For: US Forest Service - July 29, 1971 - C.S. File 55/206-6 - M 43-22

Found a faint "X" & orig. line blazes. HELEN POB. Found - 32" Fir with overgrown face, opened face & found 39" orig. scribing. This is the formerly 18" fir in the SE quad.

At the proper distance & bearing from the orig. BT, I placed a 2"x36" galv. IP, flanged at the bottom & capped with a br. disk welded on top. The monument projects 6" above ground. I filled in around the pipe monument with stone & packed earth. I stamp the disk:

1/4 S 26
S 35
1971
4185

2 1/2" BC ON 2" I.D. I.P. PROJ 12"

I established new BTs as follows, each BT has a scribed face & a USFS BT sign breast high & facing monument, BTs are:

36" A 24" D. Fir bears S. 19° W., 51.0 ft. 318 FHB

52" A 36" D. Fir bears N. 25° E., 41.75 ft. 422 FHB

USFS METAL U.I.T POST & SIGN EAST 3.5 FT