

GOVERNMENT CORNER RESTORATION FORM  
DOUGLAS COUNTY SURVEYOR

TOWNSHIP 27 RANGE 3 SECTION 23 PLSS/GCDB No. 540300

CORNER DESIGNATION: 1/4 Corner of Sections 23 & 24

FILED  
Date: 11/8/2022  
By: JC  
Corner Form: CS 67/54-57  
Field Notes: 3 pgs  
DOUGLAS COUNTY SURVEYOR

CORNER HISTORY, PREVIOUS RENEWALS OR SURVEYS:

- SEE DCSO SURVEY & CORNER RECORDS FOR PLSS 2703540300

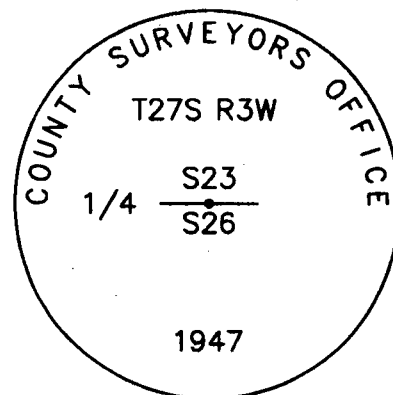
MONUMENT (CONDITION AND SOURCE):

- Found a 1" i.d. iron pipe, firmly set, projecting 8" above the ground with a 2 1/2" diam. brass cap marked as noted:

DATE: February 11 2019

- Condition Report Only
- Not Found
- Renewed
- Unrecorded
- Surveyed In
- Referenced Out

MONUMENT DETAIL



ACCESSORIES (CONDITION, SOURCE & RECORD):

Bearing Trees by Irving in 1947:

- A 23" diam. d. fir bears S 54° W, 13.6 feet with bark scribing no longer visible. (Rec. S 50° W, 13.6 feet)
- A 28" diam. d. fir bears N 36° W, 10 feet with bark scribing no longer visible. (Rec. N 43° W, 9.7 feet)

New Bearing Trees:

- A 6" diam. d. fir bears N 57° E, 6.1 feet scribed "X", "BT" on a double blaze.
- A 22" diam. r. cedar bears S 41 1/4° E, 22.5 feet scribed "1/4S26CS", "BT" on a double blaze.

LOCATION & COMMENTS:

The corner falls in mixed timber forest approximately 25 feet North of a clearcut corner.

All bearing trees have BT Tags attached. All new bearing trees have double blazed faces with bearing measured to the center of the tree at the root crown and distances measured to a 4" magnetic nail in the side and center of the root crown.

GEODETIC COORDINATES  
LATITUDE:  
LONGITUDE:  
DATUM: NAD 83  
SOURCE: GeoXT6000  
OREGON SOUTH-ZONE3602:  
FILE PATH:

COMPASS DECLINATION: 14 3/4° E.  
AGENCY: DCSO  
PARTY CHIEF: S. J. Flause  
WITNESSES: J. Lorsung  
NOTES: ATTACHED

CS 67/54-57

PLSS: 540300

T&TS R03W S23

DATE: FEB. 11, 2019

1/4 S23

CREW:

CREW CHIEF - S.J. FLAUSE

TECH - JEFF LORSUNG

MONUMENT:

A 2 1/2" DIA. BRASS CAP

ON A 1" I.D. IRON PIPE, STAMPED AS FOLLOWS

1947

"COUNTY SURVEYORS OFFICE"

PROPORTIONED  
CORNER

1/4 S

PROJ: 8" PLUMB

FOUND:

TWO 1947 B.T.'S; 23" D. FIR WITH BARK SCALING

NO LONGER VIS.; BEARS S54°W, 13 1/2 FT. DISTANT

28" D. FIR WITH BARK SCALING NO LONGER VISIBLE;

BEARS N36°W, 10 1/2 FT. DISTANT.

SAME B.T.'S 1947, 1984, 1985. WE AGREE WITH

1984 GEISLER BAND D. MEASUREMENTS.

NEW:

6" D. FIR SCRIBED "X" "BT" ON A HIGH-LOW

BLAZE; BEARS N57°E, 6 1/2 FT. DISTANT

A 22" R. CEDAR SCRIBED "1/4 S26CS" "BT" ON

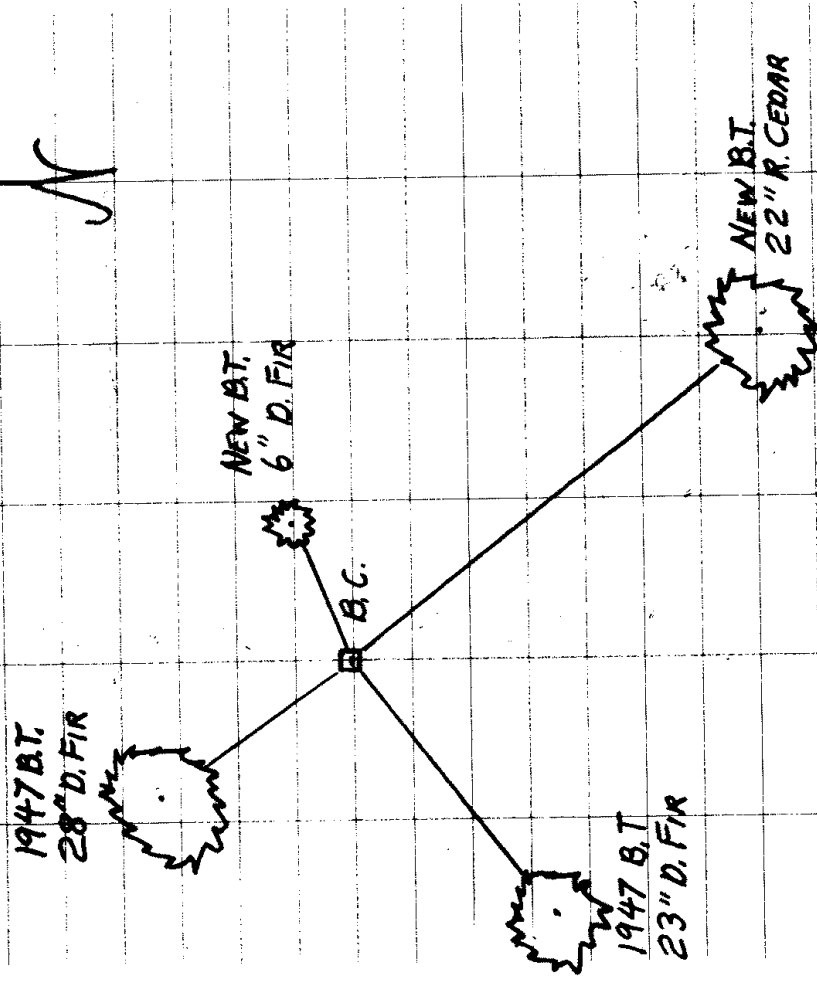
DOUBLE BLAZE; BEARS S41°E, 22 5/8 FT. DISTANT

MONUMENT IS 25 FT. NORTH FROM CLEAR-CUT EDGE

CS 67/54-57

2/3

SKETCH



DECLINATION: 143°4'E

CS 67/54-57

3/3