

PLSS 400200

DATE: 8/17/19

T235, R10W, S27

S27

S33

FIELD CREW:

PARTY CHIEF - S. J. FLAUSE  
TECHNICIAN - J. A. LARSON

MONUMENT

FROM 1958 OREGON STATE BOARD OF FORESTRY RESTORATION, A 3" DIA. BRONZE CAP ON 1/2" I.D. IRON PIPE. CAP IS MARKED AS DESCRIBED. PROJ: 5 INCHES ABOVE GROUND

REFERENCES FORWARD:

FROM 1958 OSBF RESTORATION EVIDENCE OF 3 THEN NEW BT'S  
A 48" DIA, 3 FT. TALL D. FIR STUMP (AS DESCRIBED); BEARS N26°E, 45.9 FT. DISTANT (AS PER RECORD).

A ROUGHLY 14" DIA. X 2 1/2 FT. TALL FIR STUMP WITH SCRIBED FACE ROTTEN AWAY, BEARS S39°E, 24 1/2 FT. DIST. (RECORD S42°E, 23 1/2 FT. GROUND TO ORIG. FACE)

AMOSTLY ROTTEN AWAY UPROOTED FIR STUMP THE ROOTHOLE OF WHICH BEARS N19°W, 37.8 FT. DIST. (AS PER RECORD)

FROM THE 1992 DC SO RENEWAL

FILED NOV 3 2027 C.S. FILE 6715432 OVER

(2)

T235, R10W, PLSS 400200 (CONT'D)  
2. THEN NEW B.T.'S FOUND.

A 19" DIA. D. FIR WITH A FULLY HEALED HIGH-LOW BLAZE; BEARS S17°4'E, 35.3 FT. DISTANT (AS PER RECORD).  
AN 11" CHINGUAPIN WITH A FULLY HEALED HIGH-LOW BLAZE; BEARS S26°W, 13 1/2 FT. DISTANT (RECORD S26°W, 13 1/2 FT).

FROM THE 1999 STATE OF OREGON DEPARTMENT OF FORESTRY SURVEY 3 BEARING OBJECTS ARE FOUND.

ALL ARE ORANGE CARSONITE MARKERS AS DESCRIBED AND AT RECORD BEAR. NEW REFERENCES:

A 10" DIA. HEMLOCK, SCRIBED "T235R10W S27" "CSBT" ON A DOUBLE BLAZE; BEARS N35°E, 9.7 FT. DIST.

A 10" DIA. D. FIR, SCRIBED "BT" ON A DOUBLE BLAZE; BEARS N35 1/2°W, 25 1/2 FT. DIST.

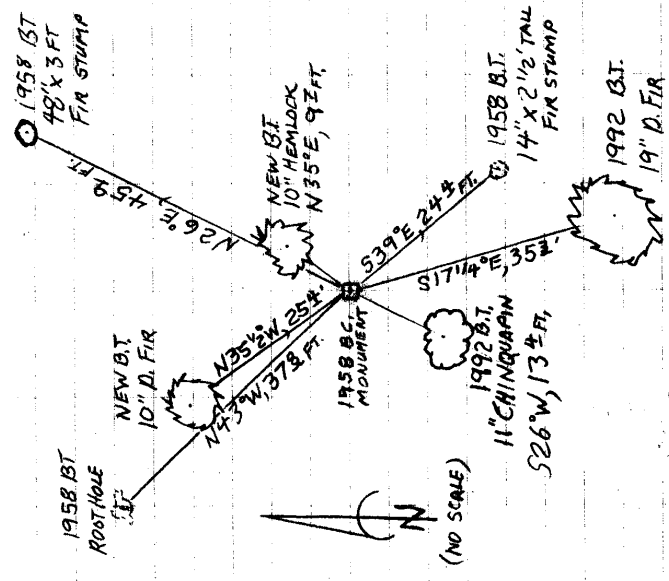
DECLINATION 15°E

MONUMENT IS IN NOW GROWN UP CLEAR-CUT ON GENTLE SOUTH SLOPE JUST SOUTH OF RIDGE BACK DIRT ROAD.

(3)

T235, R10W, PLSS 400200 (CONT'D)

SKETCH:



(NO SCALE)

TOWNSHIP 23 RANGE 10 POINT IDENTIFIER # 400200

PRIMARY CORNER DESCRIPTION cor. Secs. 27, 28, 33, & 34

Alias _____	Description _____
Alias _____	Description _____
Alias _____	Description _____
Alias _____	Description _____

8/19/19

GLO survey by Levi C. Walker under contract #763, dated June 20, 1905 - (DCSO records Vol. 7 Page(s) 2723)

-----

Set a Fir post, 3' long, 4" sq., 24" in the ground, for the cor. of secs. 27, 28, 33, & 34 mkd: T23S S27 on NE., R10W S33 on SE., S33 on SW, and S28 on NW face, with 1 notch on S & 3 notches on E edge, from which

- A Fir, 20" dia., bears N.26°E., 25 lks., mkd: T23S R10W S27 BT.
- A Fir, 18" dia., bears S.52°E., 32 lks., mkd: T23S R10W S34 BT.
- A Fir, 14" dia., bears S.57°W., 84 lks., mkd: T23S R10W S33 BT.
- A Fir, 8" dia., bears N.79°W., 124 lks., mkd: T23S R10W S28 BT.

Elliott State Forest Corner Records by Federal Civilian Conservation Corp (CCC) 8/1933 - FB 119 Pg. 6 & C.S. File 49/80 (Filed 4/24/1958)

-----

Fir post 3" sq. 3 ft. long.

- 24" Fir N.26°E., 16.5 ft.
- 18" Fir S.52°E., 21 ft.
- 20" Fir S.57°W., 55 ft.

65 ft. North to Loon Lake Rd.

Arnold G. Gibson, Oregon St. Board of Forestry - Elbert Driver - Witnesses: R. Banks, D. Timmons & D. McConnell - Jan. 1958 - C.S. File 42/422

-----

Found - Orig. post, now missing from which a:

- 20" Fir bears N.26°E., 25 lks., now 27" uproot, face grown over.
- 18" Fir bears S.52°E., 32 lks., now 20" uproot, face grown over.
- 14" Fir bears S.57°W., 84 lks., now 24" of work & portion of scribe visible.
- 8" Fir, bears N.79°W., 124 lks., now missing

Set - <sup>3" Bl</sup> 1 1/2" x 36" gal. IP with 3" bronze cap mkd: ORE BOARD OF FORESTRY T23S R10W S27 S28 S33 RS359, 33" in ground, and from which a:

- 27" Fir N.26°E. 45.9' scribed T23S R10W S27 BT RS359
- 15" Fir N.43°W., 37.8 ft., scribed T23S R10W S28 BT.
- 22" Fir S.42°E., 23.4 ft., scribed T23S R10W S34 BT.
- 24" Fir S.66°W., 74.1 ft. scribed T23S R10W S33 BT.

Ore. St. Bd. of Forestry metal location poster on 22" Fir BT



T23S R10W  
~~S28~~ S27  
 S33 S34  
 1958

continued next page

CS 67/54-32

PRIMARY CORNER DESCRIPTION cor. Secs. 27, 28, 33, & 34

Alias _____	Description _____
Alias _____	Description _____
Alias _____	Description _____
Alias _____	Description _____

Douglas Co. Surveyors Office - Randall W. Smith, Deputy -  
Stephen J. Flause - 7/23/1992 - C.S. File 64/31

Found - 3" dia., bronze cap (OSBF) on 1½" ID galv. IP,  
firmly set, and protruding 6" from ground.

No evidence of orig. BTS found, logging & road work  
in area has obliterated remains of windfalls &  
old stumps. 1958

*GOOD* A 27" Fir now a 3 ft. tall 48" dia., D.Fir stump  
with a fully healed single blaze bears N.26°E.,  
46.7 ft., rec. N.26°E., 45.9 ft., this is a  
reasonable measurement. 1933

*MOSTLY  
ROTTEN AWAY* A 15" Fir now an uprooted 7 ft. tall 22" DBH Fir  
stump with a fully healed single blaze, the root  
hole of which agrees well with the record bearing  
& distance N.43°W., 37.8 ft. 1958

*14" DIA  
SCRBG ROTTEN  
AWAY* 22" Fir now a 2½ ft. tall 28" dia., D.Fir stump with  
the scribing "S R10W S" visible in the remains of  
a partially opened single blaze bears S.39°E.,  
24.4 ft. dist., rec. S.42°E., the dist. is a  
reasonable face measurement. 1958

No evidence of SW BT is found, measurement falls in  
a road.

*NO EVID  
ROTTEN  
AWAY* An unrecorded reference is found, a rotted 2 ft.  
tall 6" dia. Chinquapin stump with a Weyerhaeuser  
location tag bears S.28°W., 12.8 ft. dist.,  
19" agrees w/Weyerhaeuser tag.

New BTs- A 4" DBH D.Fir scribed "X BT" on a double blaze  
bears S.17°E., 35.3 ft. *FH 11-10*

11" A 5" DBH Chinquapin scribed "X BT" on a double blaze  
bears S.16°W., 13.2 ft. *134 FH 11-10*

Monument is in a recent clearcut North of a older clearcut &  
between roadways as shown in sketch in CS File. Monument is  
approx. 250 ft. ENE from large D.Fir snag wildlife tree.

James M. McIntosh - For: Oregon Dept. of Forestry - 7/1999 -  
M 133-14

Found - Oregon ST. BD. of Forestry 1½"x36" IP w/3" bronze  
cap in place. 1958

27" Fir N.26°E., 45.9 ft. (now 51"x3' high stump in  
place, face closed, WEYCO Tag) 1958

15" Fir, N.43°W., 37.8 ft., (now 21"x7' long uproot,  
face closed, WEYCO tag & yellow metal location  
poster) 1958

22" Fir S.42°E., 23.4 ft. yellow metal location  
poster (now 26"x2½' high rotten stump in place,  
face exposed & rotten, WEYCO tag) BT tag. 1958

continued next page

TOWNSHIP 23 RANGE 10 POINT IDENTIFIER # 400200

PRIMARY CORNER DESCRIPTION cor. Secs 27, 28, 33, & 34

Alias _____	Description _____
Alias _____	Description _____
Alias _____	Description _____
Alias _____	Description _____

24" Fir S.66°W., 74.1 ft., now missing, falls in old road. 1958  
6"x2' high Chinquapin stump (WEYCO) S.28°W., 12.8 ft. (now very rotted stump in place)  
4" Fir, S.17¼°E., 35.3 ft., now 8" in place face closed, BT tag. DCSO 1992  
5" Chinquapin S.26°W., 13.2 ft., now 7" in place, scribes visible, BT tag. DCSO 1992  
New BOs- Orange Carsonite marker CBM-250 Labeled Witness post bears S.34°W., 2.85 ft. to base.  
Orange Carsonite marker CBM-250 Labeled Witness post bears N.50°W., 3.85 ft. to base.  
Orange Carsonite marker CBM-250 Labeled Witness post bears N.47°E., 3.35 ft. to base.

Please note that this corner is on the Douglas Co. & Coos Co. line and Coos Co. Surveyor's Office may have more information concerning this corner.

*NEW BTs*

10" HEM. "T235R10WS27"CSBT" N35°E, 9.7 FT

10" D.FIR "T235R10WS28CS"BT" N35½°W, 25 1/2 FT.