

GOVERNMENT CORNER RESTORATION FORM

FILED

TOWNSHIP 28S RANGE 07W SEC. 24 PLSS # 640360

Date: 10/27/2022 By: X
This survey consists of:

DOUGLAS COUNTY OREGON

DATE 10/24/2022

Map: _____

Narrative: _____

Corner Rpt: CS 67/54-29

Corner Designation

CN 1/16

DOUGLAS COUNTY
SURVEYOR

Monument(s) Found: (Condition and Source)

CORNER ESTABLISHED BY MAX HULL
IN SURVEY FILED IN DCSD AS M92-4
MONUMENT IS A 5/8 INCH DIA. IRON ROD

___ Condition report

___ Not Found

Renewed

___ Unrecorded

___ Surveyed In

Previous Renewals

N/A

MONUMENT DETAIL

A 5/8" IRON ROD
SET PLUMB
PROTRUDING 3 INCHES
ABOVE GROUND.

Accessories Found

THE 1982 SW BEARING TREE IS NOW GONE, REMOVED
BY DRIVEWAY ENTRANCE EXCAVATION.

THE 1982 NW BEARING A NOW 24 INCH DIA. WHITE OAK
(ORIGINALLY DESCRIBED AS A BLACK OAK); BEARS N 7 1/2° W,
112° FT. DISTANT (AS PER RECORD).

C.S. File 67/54-29

Monument Set (Procedure and Description)

MONUMENT DETAIL

N/A

N/A

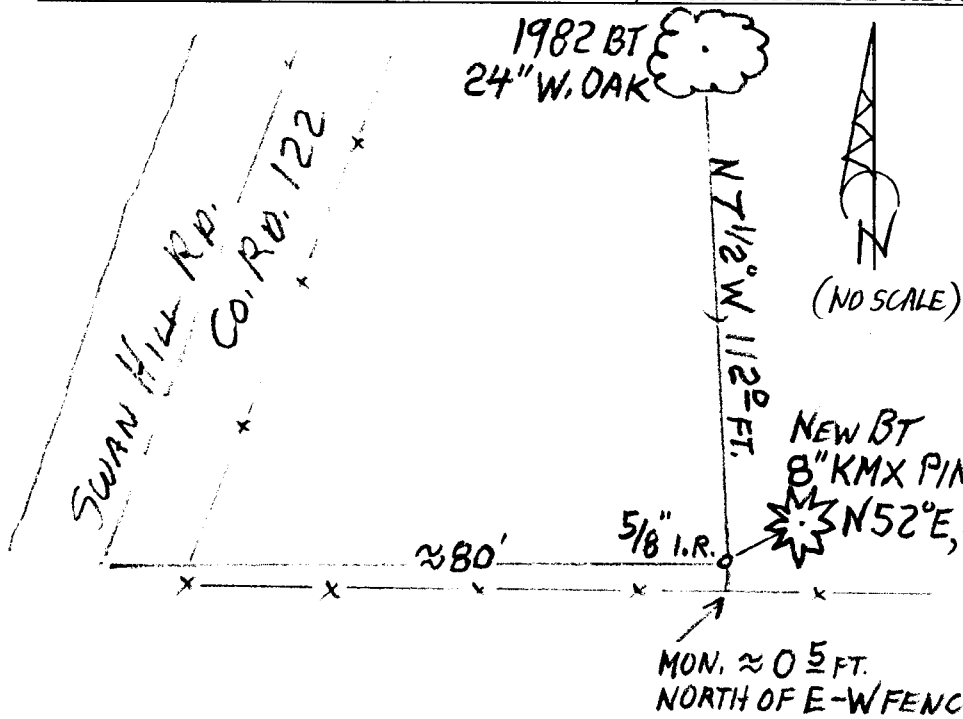
New Accessories

AN 8 INCH DIA. 'KMX' PINE SCRIBED "X" "BT" ON A HIGH-LOW BLAZE; BEARS N 52° E, 58 FT. DISTANT.

DECLINATION 14 1/2° E

Sketch of Monument, Accessories, and General Area

Location & Comments



MONUMENT ON FLAT GROUND IN OAK AND PINE WOODLAND, APPROXIMATELY 80 FT. EAST FROM SWAN HILL RD. (COUNTY RD. 122)

Comp. Decline. 14 1/2° E
Agency DCSO
Party Chief STEPHEN JOHN FRAISE
Note keeper Stephen John Fraise
Witnesses JEFF LORSUNG

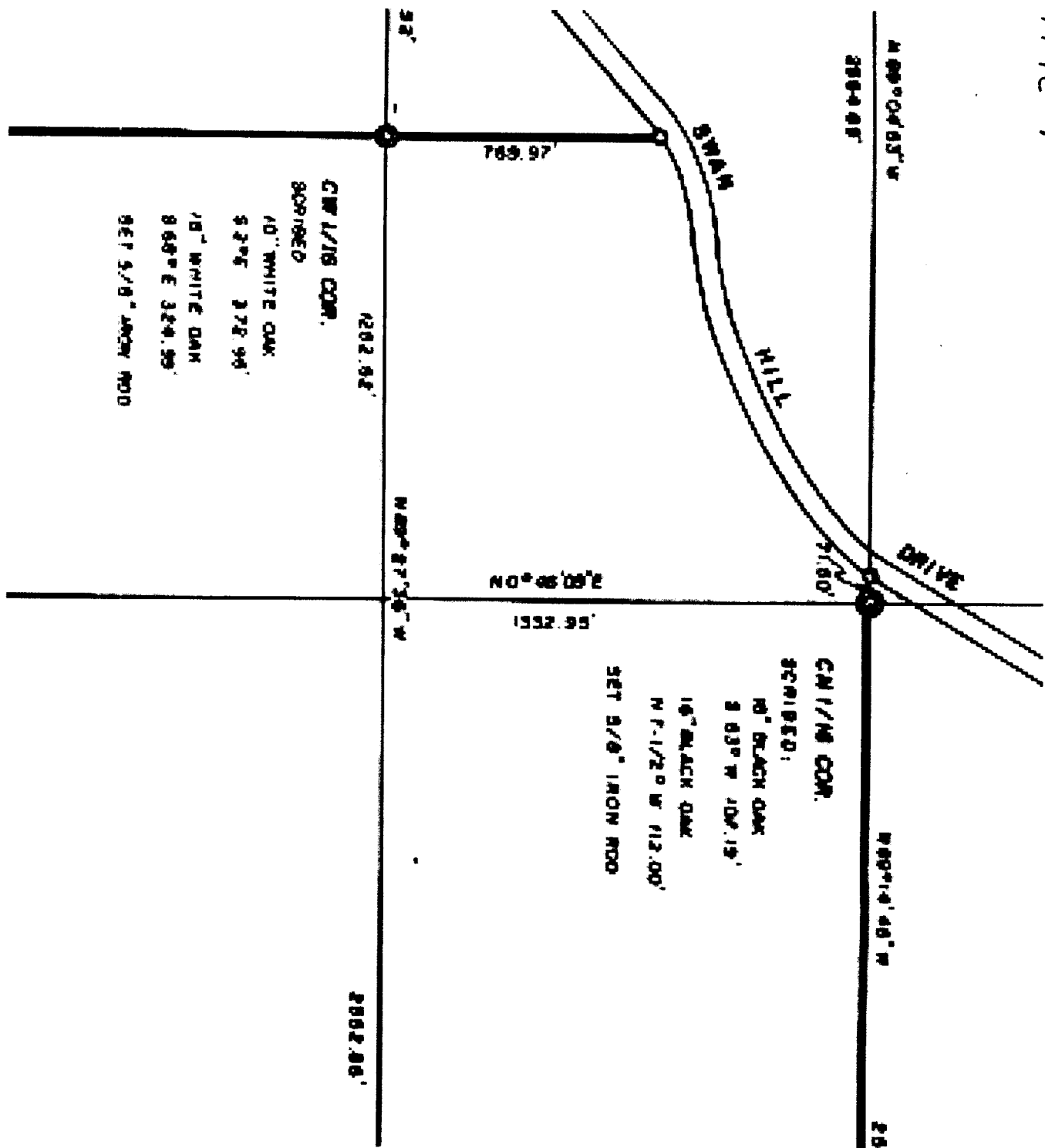
REGISTERED PROFESSIONAL LAND SURVEYOR

Handwritten signature of Ronald A. Qumby

OREGON
JULY 14, 1978
RONALD A. QUMBY
1654

Expires: 12/31/2022

CS 67/54-29



N 89° 04' 55" W

2884.87'

SWAN HILL DRIVE

765.97'

N 202.82'

CORNER 1/18 CORN. DESCRIBED

10" WHITE OAK S 2° 5' 37.8" W

18" WHITE OAK S 68° 5' E 324.59'

SET 5/8" ANCHOR ROD

DRIVE

21.80'

N 89° 04' 55" W

2884.87'

CORNER 1/18 CORN. DESCRIBED:

10" BLACK OAK S 83° 5' W 102.15'

16" BLACK OAK N 71° 12' 0" W 112.00'

SET 5/8" IRON ROD

N 89° 04' 40" W

N 89° 04' 40" W

2882.86'