

GOVERNMENT CORNER RESTORATION FORM

FILED

TOWNSHIP 255 RANGE 1W SEC. 12 PLSS # 100507

Date: 10/18/2022 By: JC

This survey consists of:

DOUGLAS COUNTY OREGON

DATE 5-17-22

Map: \_\_\_\_\_

Narrative: \_\_\_\_\_

Corner Rpt: CS 67/54-7

Corner Designation

DOUGLAS COUNTY SURVEYOR

E 1/4 For Sec. 12 only T25-2

Monument(s) Found: (Condition and Source)

\_\_\_ Condition report

2 1/2" GLD BRASS CAP ON

\_\_\_ Not Found

1" Iron post. Proj 6"

Renewed

\_\_\_ Unrecorded

Previous Renewals

\_\_\_ Surveyed In

GLD Survey 1900 Vol 8 pg 3443-3447

Hosford 1949-1950 CS 40/279 M12-6

MONUMENT DETAIL

BLM Resurvey 1951-1963 Vol 32 pg 13339

McChesney 1975 CS 59/11-6

1/4

BLM Resurvey 1978-1980 Vol 42 pg 14336

S12

Ness 1995 M123-3A-B

1951

BLM Resurvey 1998-1999 Vol 53 pg 20686-7

Accessories Found

Burnt 17" X 30' D. Fir snag S11°30'W 17.5 FT

LARGE HEALED FACE

SAWYER Burnt 30" X 1 1/2' Doug Fir stump N153°0'W

15' FT TB ADDED 3 1/2" PK NAIL Top Center

HEALED FACE

Burnt SAWYER 32" X 7' E. Cedar stump N18°32'W

32.5 FT HEALED FACE

2" I.P. with steel cap HOSFORD MON.

Loose From Ground Reset South 8' FT

Proj 4"

RENEWAL

Monument Set (Procedure and Description)

MONUMENT DETAIL

---



---



---



---



---



---

New Accessories

Burnt-Dead 13" D. Fir 564°E 21.0 FT 3 1/2"  
 P.K. NAIL RIGHT Side Center No Blaze or Scribe  
 Burnt-SPAWN 20" x 1 1/2" Fir Stump 553°W  
 4.9 FT 3 1/2" P.K. NAIL Top Center

Sketch of Monument, Accessories, and General Area

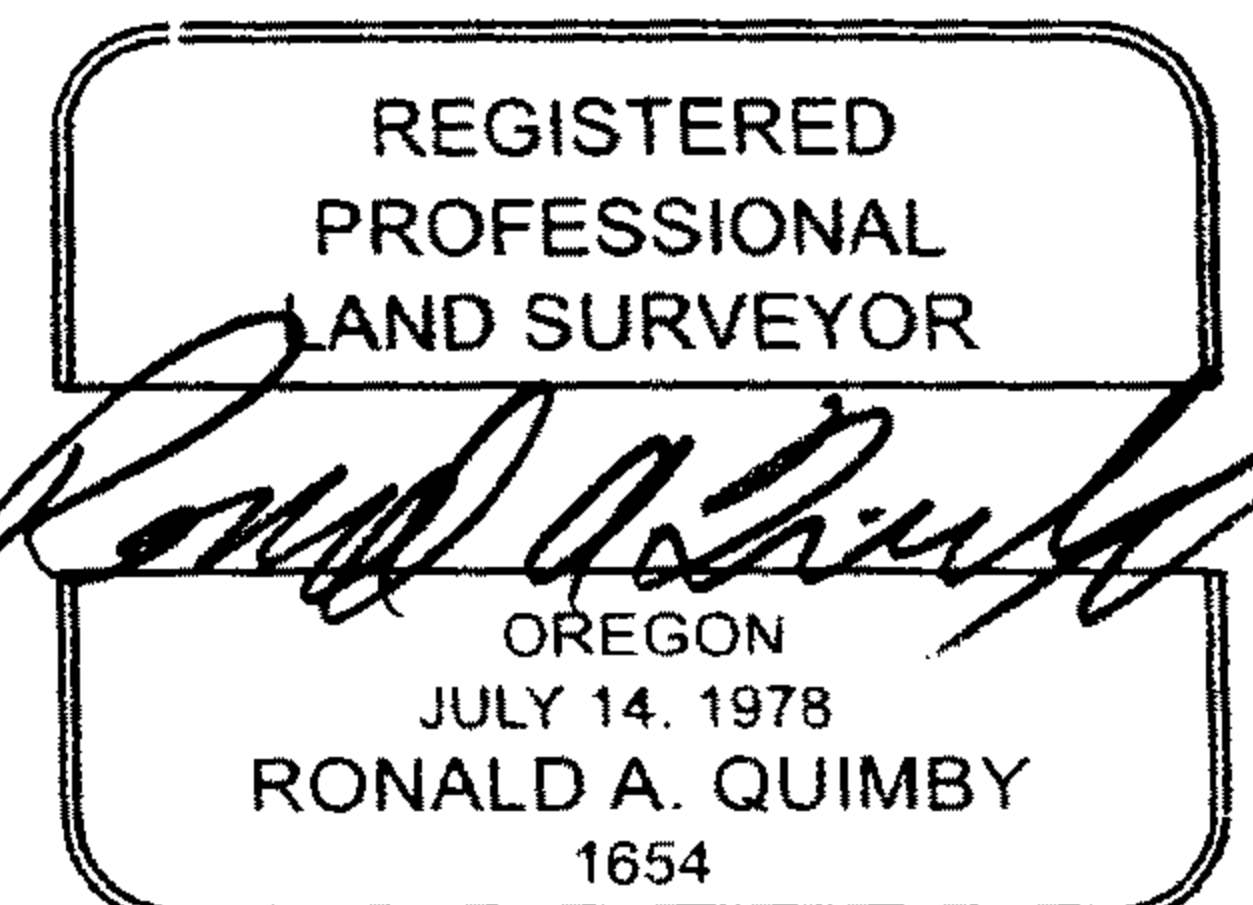
Location & Comments

LAT 43° 24' 33.68" N  
 LONG 122° 52' 26.47" W

FOR SKETCH SEE ATTACHED  
 SHEET.

AREA BURNED  
 9-2020

Comp. Decline. 14 1/2° E  
 Agency DCGO  
 Party Chief S F LAUSE  
 Note keeper  
 Witnesses J. LORSUNG

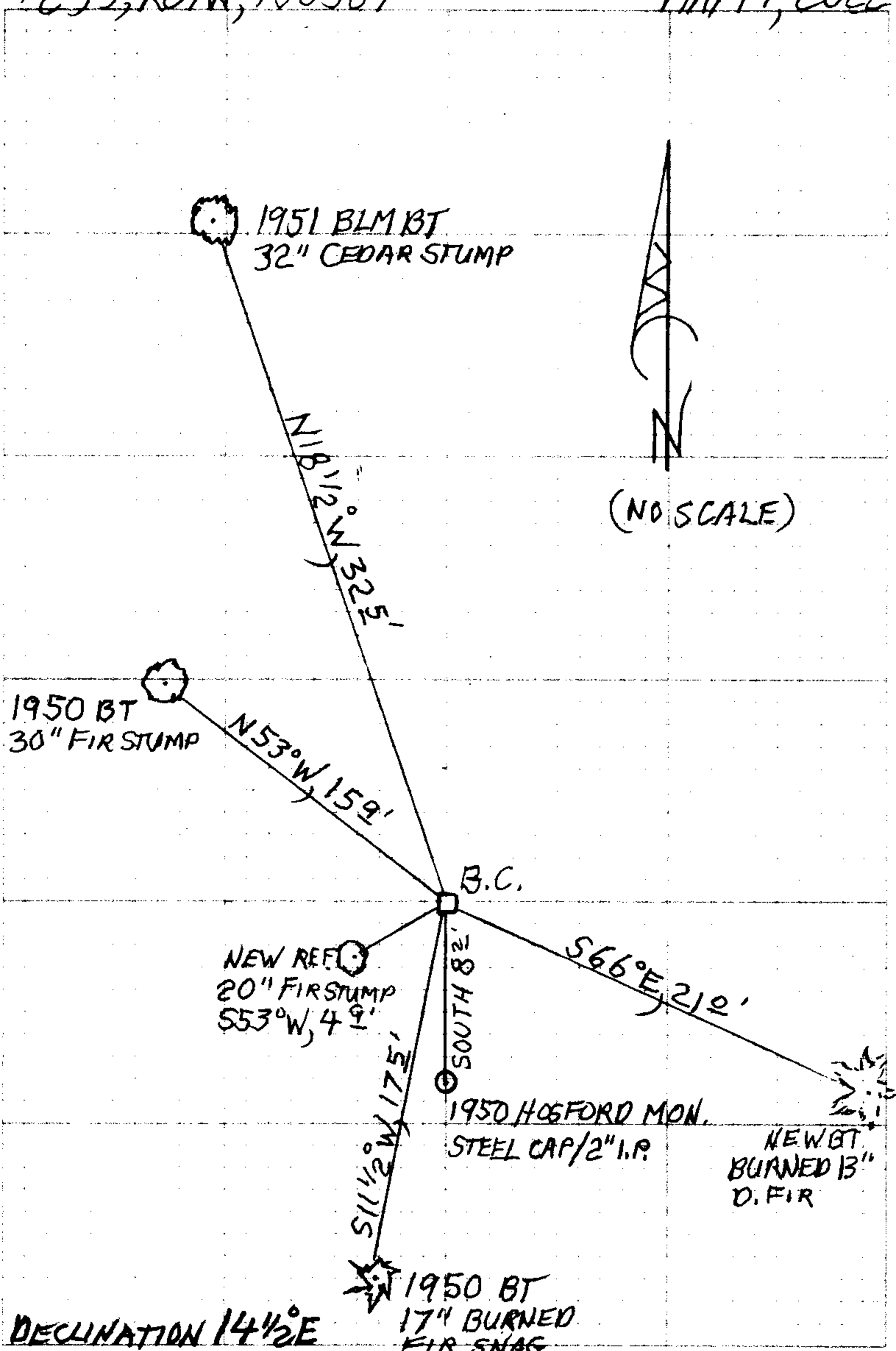


EXPIRES: 12/31/2022

CS 67/54-7 214

T25S, R01W, 100507

MAY 17, 2022



DECLINATION 14 1/2° E

ENDURO

CS 67/54-7  
3/4

TOWNSHIP 25 RANGE 01 POINT IDENTIFIER # 100507

PRIMARY CORNER DESCRIPTION E. 1/4 Cor for Sec. 12 only, T25-2

Alias _____	Description <u>PROCESSED GPS</u>
Alias _____	Description _____
Alias _____	Description <u>122° 52' 26.47"</u>
Alias _____	Description <u>43° 24' 33.68"</u>

A Fir 10" dia., bears S.7°W., 20 lks. dist. mkd. ¼ S12 BT. Bury the original corner stone alongside the iron post.

Glen McChesney - For; Weyerhaeuser Co. - Feb. 24, 1975 - C.S. File 59/11-6

-----

Found - Brass cap. No trace of original stone.

12" I.Cedar, N.20°W., 32.3', face healed over, with DCSO BT plate.

10" Fir, S.7°W., 13.2 scribing visible on low face. DCSO BT plate.

Hosford's steel cap. (cap brs S. 8.2 ft. from GLO BC)

16" Fir, S.23°W., 9.1 ft. scribing visible.

24" Fir N.34°W., 22.0 ft., face healed over. center of tree measurement.

Accessories added this date:

36" Fir, S.36°W., 35.4 ft. with "W" nail and plate.

24" Fir, N.52°W., 14.2 ft. with "W" nail and plate.

(These references are to the GLO brass cap.)

BLM resurvey by James E. Jelley, Cadastral Surveyor, under Group #'s 350 and 929 - Surveyed May 1978/May 1980 - (DCSO records Vol. 42 Page(s) 16336)

-----

Fd 1951 BC from which the remains of BTs mkd by Tallet.

A sawed Fir stump 14" dia., bears S.7°W., 20 lks. dist. with axe marks visible on open blaze.

A Cedar 9" dia., bears N.20°W., 49 lks. dist healed blaze. and bearing trees mkd. by Hosford in 1950:

A Fir 18" dia., bears S.11 3/4°W., 27½ lks. dist. with fragmentary scribe marks visible on open blaze.

A Fir 26" dia., bears N.50½°W., 23½ lks. dist., with healed blaze.

★ DECLINATION 14½°E

Steven Ness, L.S. #811 - For: Weyerhaeuser Co. - Oct. 1995 - M 123-3 A&B

-----

Found 2½" GLO brass cap on 1" iron post, from which

NO EVIDENCE 44" D.Fir broken stump, S.6°13'W., 13.8. No marks visible. (S.7°W., 13.2)

BURNED SNAG 17" x 30" 20" D.Fir, S.11°30'W, 17.5. Large healed face (S.13°W., 17.7' from GLO monument)

SAWN BURNED 30" x 1½ STUMP 29" D.Fir snag, N.51°42'W., 16.0' to center. 14.0 to "W" nail. Face healed "W" nail in small low blaze NAIL NOT SEEN

BURNED SAWN STUMP 20" I Cedar, N.18°32'W., 32.5'. Face healed. (N.20°W., 32.3)

32" x 1 FT TALL

MARKED AS PREVIOUSLY DESCRBD. PROT. 6"

HOSFORD MON. LOOSE FROM GROUND RESET SOUTH, 8 2/3 FT, NOW PROT, 4" continued next page

NEW REFS

BURNED DEAD 13" D, FIR NO BLZ OR SCAR S 66° E, 21.0' 3 1/2" PK RSC

BURNED SAWN FIR STUMP 20" x 1 1/2 TALL S 53° W, 49' 3 1/2" PK TOP CNTR

CS 67154-7 414