

GOVERNMENT CORNER RESTORATION FORM

FILED

TOWNSHIP 255 RANGE 3W SEC. 16 PLSS # 340400

Date: 7/20/2022 By: XC
This survey consists of:

DOUGLAS COUNTY OREGON

DATE 4-25-22

Map: _____

Narrative: _____
Corner Rpt: CS 67/52-36

Corner Designation

$\frac{1}{4}$ COR $\frac{16}{21}$

DOUGLAS COUNTY
SURVEYOR

Monument(s) Found: (Condition and Source)

Condition report

Not Found

Renewed

Unrecorded

Surveyed In

GLO BRASS CAP
STEEL FENCE POST SSE 1.0 FT

Previous Renewals

GLO RESURVEY 1940 Vol 27
pg 11581

MONUMENT DETAIL

DCSO 1966 CS 54/27-42

$\frac{1}{4}$ $\frac{516}{521}$
1943

Accessories Found

BURNT SAWN 24" X 1 1/2' TALL D. FIR STUMP
S 11° E 32.2 FT (REC S 9 1/2° E 33.0 FT) 3" PK
Top Center
24" X 6 FT BURNT - SAWN D. FIR STUMP
N 68° E 10.0 FT (REC N 75° E 9.8 FT) Fully Healed
BLAZE 3" PK Right Side Center
SAWN - BURNT 26" X 5' TALL D. FIR STUMP
S 78 1/2° W 16.0 FT (REC S 77° W) 3" PK NAIL
Top Center Fully Healed SCAR

RENEWAL

Monument Set (Procedure and Description)

MONUMENT DETAIL

New Accessories

Burnt - SAWN 10" X 7 FT TALL Red Cedar
 STUMP N 18° W 2.6 FT 3" PK Right side
 Center Not Blazed or Scribed

Sketch of Monument, Accessories, and General Area

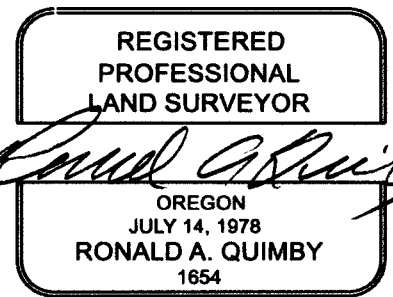
Location & Comments

LAT. 43° 23' 39.98" N
 LONG 123° 03' 32.35" W

AREA BURNED
 9-2020

See Attached sheet for
 Sketch

Comp. Decline. 14 1/2° E
 Agency DCSD
 Party Chief S. Flouse
 Note keeper
 Witnesses J Lorusung



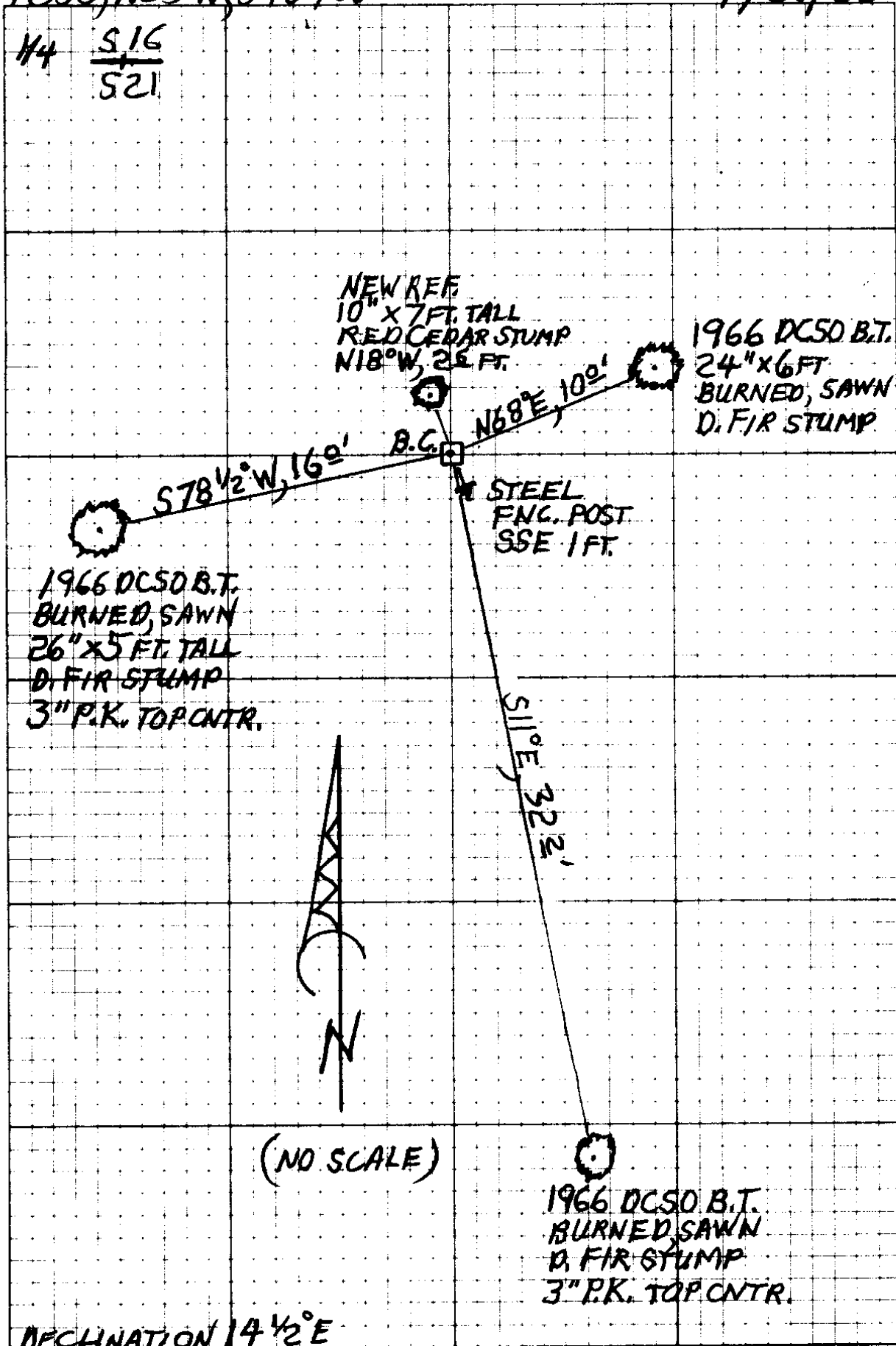
EXPIRES: 12/31/2022

CS 67/52-36
 214

T25S, R03W, 340400

4/25/22

14 $\frac{516}{521}$



NEW REF
10" X 7 FT. TALL
RED CEDAR STUMP
N18°W, 25 FT.

1966 DCSO B.T.
24" X 6 FT
BURNED, SAWN
D. FIR STUMP

1966 DCSO B.T.
BURNED, SAWN
26" X 5 FT. TALL
D. FIR STUMP
3" P.K. TOP CNTR.

STEEL
ENC. POST
SSE 1 FT.

$S11^{\circ}E, 32\frac{1}{2}'$

(NO SCALE)

1966 DCSO B.T.
BURNED, SAWN
D. FIR STUMP
3" P.K. TOP CNTR.

DECLINATION $14\frac{1}{2}^{\circ}E$

CS 67/52-36

314

MM GPS 4/21/22
TIME - 9:50 P
H.I. - 2,000 M

RENEWED 4/25/22

TOWNSHIP 25 RANGE 03 POINT IDENTIFIER # 340400

PRIMARY CORNER DESCRIPTION 1/4 Cor. for Secs. 16 and 21

Alias _____	Description _____
Alias _____	Description _____
Alias _____	Description _____
Alias _____	Description _____

Original, Laban H. Wheeler, Under Contract #467 dated April 7, 1883 (DCSO Records, Volume 9 Page 3707)

Set Yew post, 3 ft. long, 3" sq., 24" in the ground for 1/4 sec. cor. mkd. 1/4 S on N. face, from which
 A Fir 10" dia., bears N.60°E., 7 lks., mkd. 1/4 S BT.
 A Fir 10" dia., bears S.20°W., 18 lks., mkd. 1/4 S BT.

GLO Dependent Resurvey by Norman D. Price, Under Special Instructions dated April, 5, 1940. (DCSO records, Volume 27 Page 11581)

Proportional measurement. Set an iron post 3 ft. long, 1" dia., 28" in the ground for 1/4 sec. cor. with brass cap mkd.

1/4 S16
 S21
 1943

from which
 A Fir 32" dia., bears N.70°E., 153 lks., mkd. 1/4 S 16 BT.
 A Fir 38" dia., bears S.16°E., 584 lks., mkd. 1/4 S21 BT.

Doug. County Surveyors Office - Vernon Tracy; Jack Heritage August 1966 - C.S. File 54/27-42

Found - GLO brass cap, 1943, with steel fence post set alongside.

Both BTs destroyed by logging.

New BTs - 7" D. Fir S. 9 1/2° E., 33.0 ft. mkd. 1/4 S21 CS BT. *SAWN BELOW BLZ.*

9" D. Fir N. 75° E., 9.8 ft. mkd. 1/4 S16 CS BT. *FHB 3" PK RSC*

13" D. Fir S. 77° W., 16.0 ft. mkd. 1/4 S21 CS BT.

This cor. lies on N. edge of old unused logging road, course E-W approx. 225 ft. east of main Hinkle Creed Rd.

BURNED, SAWN 24" x 1 1/2 FT TALL STUMP

BURNED, SAWN 24" x 6 FT STUMP

NOW N 68° E, 10 FT.

3" P.K. TOP CNTR. 511° E, 32 FT

SAWN, BURNED STUMP 26" x 5 FT. TALL 3" PK SET TOP CNTR. S 78 1/2° W, 16 FT. SHOWS FULLY HEALED BLZ.

NEW REF.

BURNED, SAWN RED CEDAR STUMP 10" x 7 FT TALL, SET 3" PK, RSC NOT BLZ'D OR SCR'B'D BEARS N 18° W, 2 FT. DIST.

A STEEL FNC. POST IS SSE, 1 FT. DISTANT.

CS 67/52-36
4/4