

GOVERNMENT CORNER RESTORATION FORM

FILED

TOWNSHIP 255 RANGE 1W SEC. 19

PLSS # 140340

Date: 4/13/2022 By: X  
This survey consists of:

DOUGLAS COUNTY OREGON

DATE 2/22

Map: \_\_\_\_\_

Narrative: \_\_\_\_\_

Corner Rpt: C56752-14

Corner Designation

C 1/4 S 19

DOUGLAS COUNTY  
SURVEYOR

Monument(s) Found: (Condition and Source)

3/4" BRASS CAP ON 2 1/2"

IRON PIPE PROJ 3"

Previous Renewals

Set by BLM 1978 - 1980

Vol 42 pg 14360

Condition report

Not Found

Renewed

Unrecorded

Surveyed In

MONUMENT DETAIL

T255 R1W

C 1/4 S 19

1978

Accessories Found

20" Burnt Fir bears S 83°W 35° TO 3 1/2"

P.K. Nail RT. side Center (Rec 53 1/2 LKS 35.2 FT)

Old Root Hole S 75 1/2° E 35.2 FT (Rec 53 1/2 LKS)

C.S. File 67/52-14

Monument Set (Procedure and Description)

MONUMENT DETAIL

\_\_\_\_\_  
\_\_\_\_\_  
\_\_\_\_\_  
\_\_\_\_\_  
\_\_\_\_\_

New Accessories

17" X 2 1/2' SAWN & BURNT CEDAR STUMP  
S 38° E 20.4 FT 3 1/2" P.K NAIL TOP CENTER

9" Hemlock S 27° W 19.0 FT LOCATION TAG  
ONLY

Sketch of Monument, Accessories, and General Area

Location & Comments

See Attached Sheet For  
Sketch

AREA BURNED  
9/2020

Lat: 43° 23' 08.35" N

Long: 122° 50' 59.09" W

Comp. Decline. 14 1/2° E

Agency DCSO

Party Chief S. Flouse

Note keeper

Witnesses J. Zorsung

REGISTERED  
PROFESSIONAL  
LAND SURVEYOR

*Ronald A. Quimby*

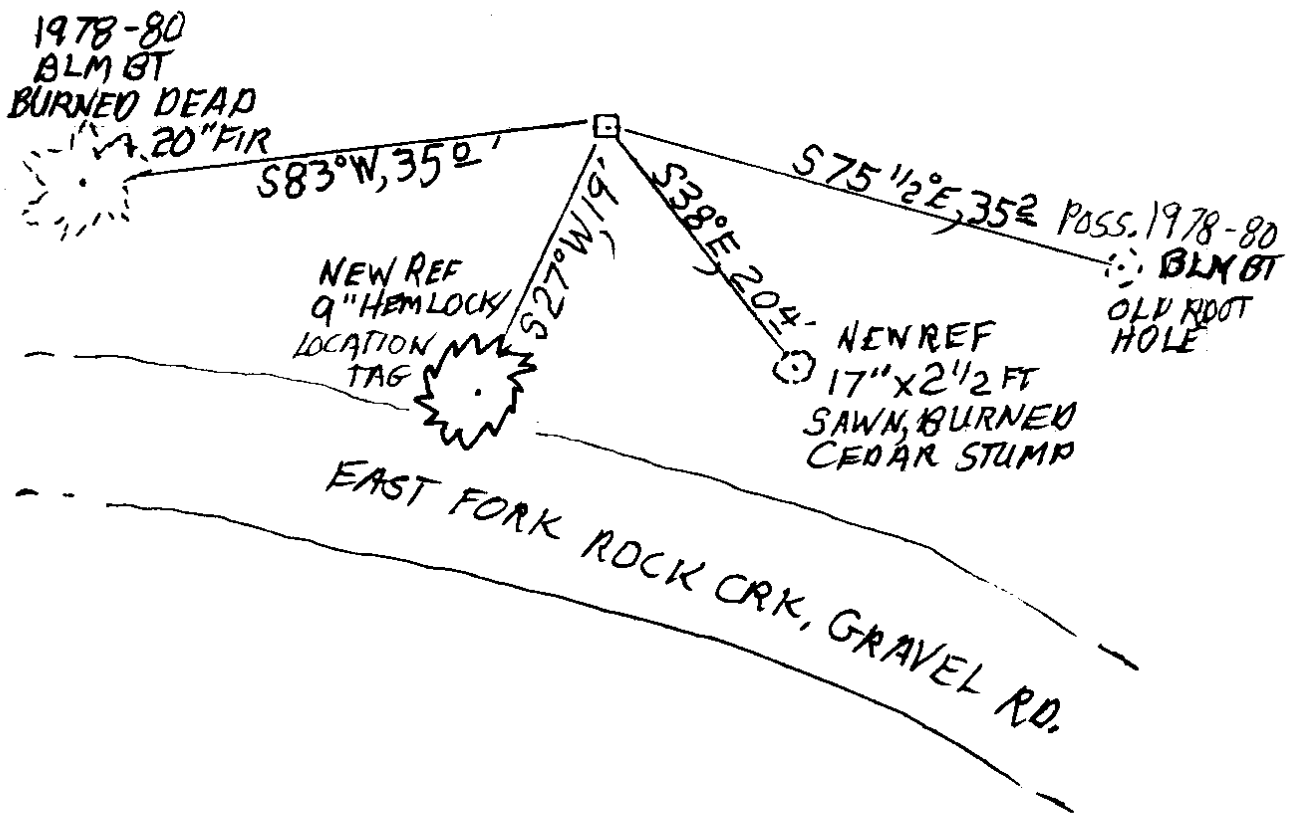
OREGON  
JULY 14, 1978  
RONALD A. QUIMBY  
1654

CS 67/52-14

Expires: 12/31/2022

T25S, R01W, 140340

2/01/22



DECLINATION 14 1/2° E

CS 67/52-14

3/4

2/1/22

TOWNSHIP 25 RANGE 01 POINT IDENTIFIER # 140340

PRIMARY CORNER DESCRIPTION Center 1/4 Cor. Sec. 19

Alias _____	Description _____
Alias _____	Description _____
Alias _____	Description _____
Alias _____	Description _____

BLM Dependent resurvey by James E. Jelley, Cadastral Surveyor under Group #350 & 929 surveyed May 1978/May 1980 - (DCSO records Vol. 42 Page(s) 16360)

Point for the center 1/4 sec. cor. of sec. 19 at intersection with the E & W center line.

Set an iron post, 28" long, 2 1/2" dia., 24" in the ground, with brass cap marked: <sup>3 1/4" BC</sup> T25S R1W PROT. 8"  
C 1/4 S 19  
BLM 1978

from which  
A fir, 7" dia., bears S. 76 1/2° E., 53 1/2 lks., mkd: C 1/4 S19 BT.  
A fir, 6" dia., bears S. 83° W., 53 1/2 lks., mkd: C 1/4 S19 BT.

OLD ROOT HOLE  
20" BURNED DEAD

35 E  
35 E 350 TO 3 1/2 PK RSC  
FMSB

NEW REFS

17" X 2 1/2" BURNED AND SAWN CEDAR STMP 3 1/2" PK CNTR S38°E, 20 1/4

9" HEMLOCK MARKED WITH ~~LINE CROSSING TAG~~ LOCATION S27°W, 19 FT

MM GPS

TIME - 10:50

H.I. - 2.000M

CS 67/52-14

4/4