

GOVERNMENT CORNER RESTORATION FORM

TOWNSHIP 265 RANGE 3W SEC. 11 PLSS # 600500

DOUGLAS COUNTY OREGON

DATE 5/25/21

FILED
Date: May 21 2021 By: [Signature]

This survey consists of:

Map: _____

Narrative: _____

Corner Rpt: CS 67/51-6

Corner Designation

W.C. $\frac{11}{14} | \frac{12}{13}$

DOUGLAS COUNTY
SURVEYOR

Previous Renewals 1964, 1978, 2006, BLM PENDING
Monument(s) Found: _____ (Condition and Source)

- _____ Condition Report
- _____ Not Found
- Renewed
- _____ Unrecorded
- _____ Surveyed In

MONUMENT DETAIL

2 1/2" DIA. BRASS CAP ON 1" I.D. IRON PIPE
PROTRUDING 1/2" ABOVE GROUND
DCSO 1964, CS 53/34-1

COUNTY SURVEYORS OFFICE
T265 R3W

W.C. $\frac{S11}{S14} | \frac{S12}{S13}$
1964

Accessories Found

FROM 1964 DCSO RENEWAL:

A 31" RED CEDAR, HEALED BLAZE; BEARS N 05° E, 34⁸ FT (REC. 35⁴ FT)

FROM 1978 DCSO RENEWAL:

A 18" x 24 FT DEAD R. CEDAR SNAG, HEALED BLAZE;
BEARS N 88° W, 42⁶ FT. (AS PER RECORD).

FROM 2006 SCHINNEL SURVEY:

A 14" x 6 1/2 FT TALL HEMLOCK STUMP, 6 NOTCHES ON FACE NO SCRIBING;
BEARS S 71° W, 16¹ FT. (REC. 15⁴⁸ FT)

FROM 2019 PENDING BLM RESURVEY:

AN 18" D. FIR, BLAZE SCAR FACE BURNED WITH SOME SCRIBING-VISIBLE;
BEARS N 69° 14' E, 106² FT (BLM TAG BED FROM TRUE COR. POSITION N 38° 4' E, 48¹ FT.)

A FIRE KILLED 10" R. CEDAR WITH A BURNED FACE;
BEARS S 62° 14' E, 93⁸ FT (BLM TAG BED FROM TRUE COR. POSITION S 16° 14' E, 45⁴ FT.)

C.S. File CS 67/51-6

Monument Set (Procedure and Description)

MONUMENT DETAIL

N/A

New Accessories

FIND BLM TREES AS DESCRIBED

Sketch of Monument, Accessories, and General Area

Location & Comments

LAT 43°18'55.62" N
LONG 123°00'43.10 W

Comp. Decline. 14 1/2° E
Agency NCSO
Party Chief S.J. FLAUSE
Note keeper "
Witnesses J.A. LORSUNG

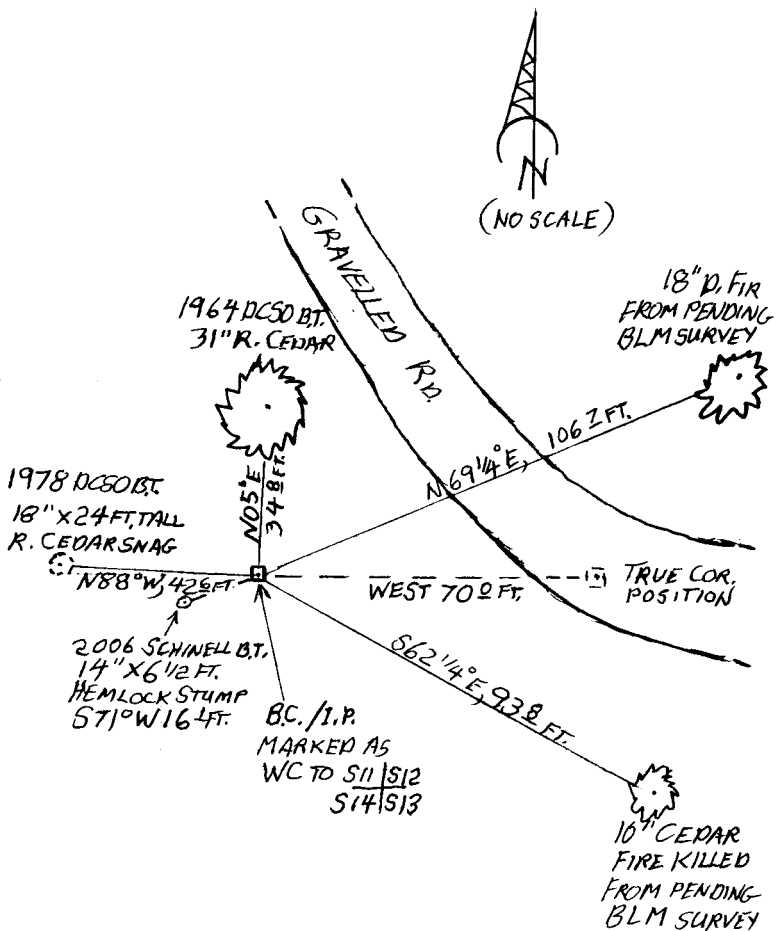
REGISTERED
PROFESSIONAL
LAND SURVEYOR

Ronald A. Gumbly

OREGON
JULY 14, 1978
RONALD A. GUMBY
1854

Expires: 12/31/2022

CS 67/51-6



CS 67/51-6

TOWNSHIP 26 RANGE 08 POINT IDENTIFIER # 600500

5/25/21

FEMA RENEWAL

PRIMARY CORNER DESCRIPTION Sec. Cor. for 11, 12, 13 and 14

Alias	Description

A Red Cedar 23" now 25", alive with broken top, bears N.5°E., 35.4 ft. Found scribing on double blaze, "WC T26S R3W S12 CS BT" partially healed.

A Red Cedar 39" now a 40" windfall, bears S.51°W., approx. 37 ft. Tree scribed "WC T26S R3W S13 CS BT" on double blaze.

A Red Cedar 38" now 40" broken stump, bears S.75°E., 15.0 ft., scribing visible on partially healed double blaze, "WC T26S R3W S13 CS BT".

A 14" hemlock found cut and uprooted, has been displaced from original position. Scribing found "CS BT".

No new monument set.

DEAD SNAG

New BT - A Red Cedar 12", bears N.88°W., 42.6 ft. Tree scribed "WC S11 CS BT". **FHSB**

Corner lies approx. 40 ft. SW of road and approx. 40 ft. NW of a draw running NE. Cor. lies in a clear cut area.

18" X 24 FT

Kevin Schinnell - For: Rosboro Lumber Co. - 5/2006 - M150-51

PROJ. 12"

Found - 2 1/2" brass monument on 1/2" iron pipe & 2 accessories as follows:

- SEE '64 RENEW - 28" cedar N.09°E., 34.36'
- SEE '78 RENEW - 15" cedar N.88°W., 42.03'
- STUMP New 6 1/2" x 4" hemlock S.71°W., 15.48'

Note - All accessories repainted and flagged at this time. Actual corner position falls in traveled surface of road.

16' 6 FACE NOTCHES NO SCRIBING

NEW BLM TREE FACES TRUE CORNER POS. HEAD 10' R CEDAR

BLM BEAR DIST FROM TRUE COR 516 1/4' E 45' 4" BURNED FACE

S62 1/4° E, 938 FT FROM REF. COR.

18" D. FIR BLM B&D FROM TRUE COR N38 1/4° E, 48 FT. BLZ SCAR FACE BURNED SOME LEGIBLE SCRIBING

N69 1/4° E, 1067 FROM REF. COR.

MN GPS TIME 9:00 HI = .8985

LAT 43° 18' 55.62 N

LONG 123° 00' 43.10 W

CS 67/51-6

TOWNSHIP 26 RANGE 03 POINT IDENTIFIER # 600500

PRIMARY CORNER DESCRIPTION Sec. Cor. for 11, 12, 13 and 14

Alias _____	Description _____
Alias _____	Description _____
Alias _____	Description _____
Alias _____	Description _____

Original - L.L. Williams & A.R. Flint, Under Contract #151 dated May 23, 1871 (DCSO records, Vol. 10 Page 4383)

Set a Cedar post, 4 ft. long, 5" dia., 20" in the ground, for the cor. to secs. 11, 12, 13 and 14, from which

A Hemlock 20" dia., bears N.42°E., 80 lks. dist.

A Fir 30" dia., bears S.50°E., 18 lks. dist.

A Hemlock 8" dia., bears S.38°W., 33 lks. dist.

A Fir 60" dia., bears N.15°W., 27 lks. dist.

Doug. County Surveyors Office - Milo E. Godfrey, Deputy - Wm. Stoffel; Mike Stone - Sept. 1964 - C.S. File 53/34-1

Found - 66" Fir N.15°W., 17.8 ft. (to face), bark scribing visible.

Rotten Hemlock stub N.42°E., 52.8 ft., fragments of unmistakable scribing visible.

45" Fir S.27°E. (Not S.50°E.) 11.9 ft., Old bark face visible, no scribing found.

No trace of SW BT.

Corner location falls in logging road to be built.

Set Witness Corner 70 ft. West of Corner.

Set Brass cap at Wit. Cor. mkd. County Surveyors T26S R3W WC 70' E. to Cor. Office, 1964

S11|S12

S14|S13

New BTs - ³¹ 23" Red Cedar N.5°E., ³⁴⁸ 35.4 ft. mkd. WC T26S R3W S12 CS BT. **FHB**

14" hemlock N.69°W., 49.5 ft. mkd. WC T26S R3W S11 CS BT.

39" Red Cedar S.51°W., 37.0 ft. mkd. WC T26S R3W S14 CS BT.

38" Red Cedar S.75°E., 15.0 ft. mkd. WC T26S R3W S13 CS BT.

Doug. County Surveyors Office - Gary L. Langlitz; L.E. Monrean Fran Silagy - March 15, 1978 - C.S. File 59/46-13

Found - 1" I.P. approx. 10" above ground, attached cap properly marked. (Wit. Cor.)

No trace of orig. corner or bearing trees found.

Corner falls in road.

(Cont. Next page)

MM GPS IMA 9100 M. 8785N

CS 67/51-6