

Filed 11/18/2021 PLS: 600100

T195, R09W, SEC 35

DATE: 8/26/20

35 | 36
—|—
ONLY

CREW:

PARTY CHIEF - S. J. FLAUSE

TECH - J. A. LORSUNG

FOUND:

FROM 1954 BLM RESURVEY

A 2 1/2" DIA. BRASS CAP ON A 1" I.D. I.P.

PROV: 16" ABOVE GROUND LEANING 0.5 FT SOUTH.

U.S. GENERAL LAND OFFICE BRASS CAP IS
MARKED AS DESCRIBED.

TWO BEARING TREES ESTB. BY NW
LAND SURVEYING IN 2012.

A 26" DIA. D. FIR WITH A FULLY HEALED
SINGLE BLAZE; BEARS N 09° E, 18 1/4 FT DISTANT
(RECORD S 7° E, 18 1/4 FT.)

A 28" DIA. X 1 1/2 FT TALL SAWN D. FIR
STUMP WITH THE REMAINS OF A BLAZE
SCAR AND FACE EVID. INSIDE TREE

STUMP BEARS N 65° W, 22 8 FT. DISTANT
(RECORD N 67 1/2° W, 22 8 FT.)

BLM LAND SURVEY SIGN AND POST

3 FT. NORTH AS DESCRIBED.

NEW REF'S:

CS 67/51-1

→
OVER

NEW REFS CONT'D.

A 22" DIA. D. FIR SCRIBED
"T19S R9W S36" "CS BT" ON
A DOUBLE BLAZE; BEARS $574^{\circ}E$,
 $44\frac{1}{2}$ FT. DISTANT. FACE IS PAINTED
WHITE AND "BT" IS PAINTED ON BARK.

A 33" DIA. X $2\frac{1}{2}$ FT. TALL D. FIR
STUMP WITH A 4" LONG MAG NAIL
SET OVER THE CENTER OF THE ROOT
CROWN; BEARS $502^{\circ}E$, $4\frac{1}{2}$ FT DISTANT.
PAINTED IN WHITE ON EAST SIDE OF
STUMP IS "LEAVE BT".

A 4" MAG NAIL IS SET IN TOP
OF 28" DIAM STUMP OVER THE
CENTER OF THE ROOT CROWN $N65^{\circ}W$,
 $22\frac{1}{2}$ FT DIST AS RECORDED.

MONUMENT RESITUATED:

MONUMENTS FOUND PLUMB. POSITION IS
REFERENCED; MONUMENT IS REMOVED, THEN
IS RESET AT REF'D LOCATION NOW PLUMB AND
PROT. 5 INCHES.

MONUMENT IS IN VERY OLD
REGROWTH FOREST TO BE LOGGED SOON.
MON IS NEAR TOP OF CUTBANK APPROX. 15 FT.
NORTH FROM CENTER OF DIRT FOREST
ACCESS RD.

CS 67/51-1

DECL $153\frac{1}{4}^{\circ}E$

10-11-12

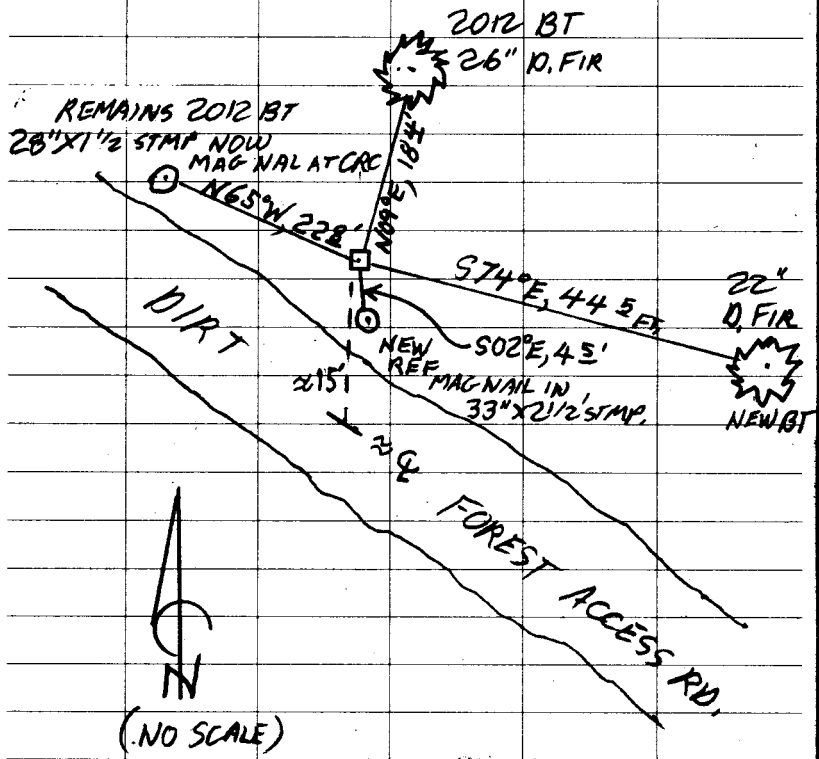
J. L. DARLING CORP. TACOMA, WA 98424-1017
www.RiemtherRain.com

No. 312

②

T19SR09W 600100 CONTD

SKETCH:



DECLINATION
15 3/4° E

CS 67/51-1

TOWNSHIP 19 RANGE 09 POINT IDENTIFIER # 600100

PRIMARY CORNER DESCRIPTION Sec Cor for 35 & 36 only, (South) *8/26/20*

Alias _____	Description _____
Alias _____	Description _____
Alias _____	Description _____
Alias _____	Description _____

GLO Survey by Henry L. Chandler, U.S. Deputy Surveyor, under Contract #705, dated April 14, 1899 - (DCSO rec Vol 1 Pg 370)

Set a post 3 ft. long, 4" sq., 24" in the ground cor. of secs.35 & 36, marked T19S S36 on NE.; and R9W S35 on NW. faces, with 1 notch on E. & 5 notches on W. edges; from which
A Cherry 7" dia. bears N.82½°E. 30 lks mkd T19S R9W S36 BT
A Cherry 8" dia. bears N.63°W., 22 lks mkd T19S R9W S35 BT
Old cor. bears E. 4 lks. dist., I destroy it.

* 1899 survey is a corrective resurvey of Chandler's 1895 survey. The Orig. 1895 survey was not accepted but some corners were accepted on a case by case basis. Per Eugene's & Coos Bay's BLM offices.

BLM Resurvey by Thomas A. Tillman and Joseph S. Gawron, Cadastral Engineers, under Group #306, surveyed May 1953/Oct. 1954 - (DCSO records Vol. 29 Page(s) 12458-59)

The cor. of secs. 35 & 36, T19-9 determined from the remaining original bearing tree as follows:
A Cherry snag 7" dia., bears N.82½°E., 30 lks. plainly blazed and healed.

At the corner point

Set an iron post, 3 ft. long, 2" dia., 28" in the ground with brass cap mkd. T 19 S R 9 W

FOUND PRO 16" LEANS SOUTH 0.5'
REFERENCE OUT NOW PLMP PRO 5"

	S 35 S 36
US GENERAL LAND OFFICE SURVEY	T 20 S R 9 W
	S 2
	1953

from which new bearing tree

An Alder 13" dia bears N.4½°E., 55 lks mkd T19S R9W S36 BT
A Fir 43" dia., bears N.45°W., 73 lks mkd. T19S R9W S35 BT

Ron Rice, NW Land Surveying - Jason Colver - May 2012 - C.S. File 65/76-46 & M167-71 (2/2014)

Found - 2½" GLO brass cap on iron pipe, dated 1953
Alder 13" dia., bears N.4½°E., 55 lks. mkd. T19S R9W S36 BT. (Missing)
Fir 43" dia., bears N.45°W., 73 lks. mkd. T19S R9W S35 BT. (Missing)

New - 24" D. Fir bears S.7°E., 18.4 ft. blazed, scribed, T19S R9W S36 BT
21" D. Fir bears N.67°W., 22.8 ft. blazed, scribed, T19S R9W S35 BT

Note - Corner has steel post adjacent to it. All BTs have red painted bands and yellow tags.

CS 67/51-1

TOWNSHIP 19 RANGE 09 POINT IDENTIFIER # 600100

PRIMARY CORNER DESCRIPTION Sec Cor for 35 & 36 only, (South)

Alias _____	Description _____
Alias _____	Description _____
Alias _____	Description _____
Alias _____	Description _____

Eugene Wobbe - Crew: Brad Foster & Matthew Ternyik - 7/7/2017
- C.S. File 65/95-43

Found - 2 1/2" brass cap (properly mkd) on 2" iron post with steel post alongside.

26" 24" D. Fir now 25" with healed face bears N. 6° E., ~~FKSB~~ 18.4' (Rec. S. 7° E.) - 2012 BT

4" MAG NAIL OVER CRC

28" x 1 1/2" x 21" D. Fir now 22" with healed face bears N. 65° W. PARTIAL ALL SCAR 22' 8' - 2012 BT

New - Set alum. channel marker post with BLM land survey marker sign North 3' from corner.

Note - Bearings are based on 1958 BLM survey.

New BT

22" D. FIR "T195R9W S36" "CS BT" S 74° E, 44.5
FACE PAINTED WHITE
ALSO PAINT BT

33" x 2 1/2" D. FIR STMP 4" MAG NAIL TO OVERCRC S 02° E, 45
WHITE PAINT EAST SIDE "LEAVE BT"

MON. NEAR TOP CUT BANK 15' NORTH OF LOGGING ACCESS RD

CS 67/51-1