

T 26 R 7 S 2

ASS: 043010

DATE: 05-9-19

NNE

Filed 11/18/2021

DLC43

CREW:

CREW CHIEF - S. J. FLAUSE
TECH - J. A. LORSUNG

FOUND:

2 1/2" DIA. BRASS CAP ON A 1" I.D. I.P.
FROM 1966 DCSD RENEWAL. THE BRASS CAP
IS MARKED AS FOLLOWS:

"COUNTY SURVEYORS OFFICE"

T 26 S

NNE COR.

BRASS CAP MON-
UMENT IS SET ON



PROJ.:

11 INCHES

SOUTH EDGE OF A
10" x 6" SANDSTONE
(NO MARKS SEEN)

DLC 43
RTW
1966

PROJ. 4" ABOVE GROUND. THIS MONUMENT IS
FROM 1937 BOYER RENEWAL SEE C.S. 30/39-2

FOUND REF'S: FROM THE 1966 DCSD
RENEWAL, A NOW DOUBLE TRUNK B. OAK
SHOWING A POSSIBLE BLAZE SCAR ON THE
25" DIA. MOST WESTERNY TRUNK. THE C.R.C.
OF THE DOUBLE TRUNK BEARS N 73° E, 136 3/4 FT.
NGT. (RECORD N 73° E, 135 3/4 FT. GOOD TO BASE OF

CS 67150-30

OVER

ALL WEATHER WINNING PARTS

J.L. DARLING CORP. TACOMA, WA 98424-1017
www.RiteInTheRain.com

FOUND REF'S CONTD:

WESTERLY TRUNK.

NO FENCE CORNER 26 FEET TO WEST.

NEW REF'S:

A 22" DOUBLE TRUNK (DIA. MEASURED BELOW TRUNK SPLIT) T. CEDAR NOT BLAZED OR SCRIBED (ONLY DOUBLE TRUNK CEDAR IN AREA); BEARS S50°E, 63³/₄ FT DIST.

EASTERLY TRUNK OF DOUBLE TRUNK TREE

A 24" B. OAK SCRIBED "NNE 12C 43" "CSBT" ON A DOUBLE BLAZE; BEARS N80°W, 14²/₄ FT. DISTANT. TO C.R.L., DOUBLE TRUNK.

BC. MONUMENT AND STONE IS SET ON S.W. EDGE OF FENCE CORNER POST WITH FENCES RUNNING NORTH, SOUTH SOUTH-EAST AND WEST.

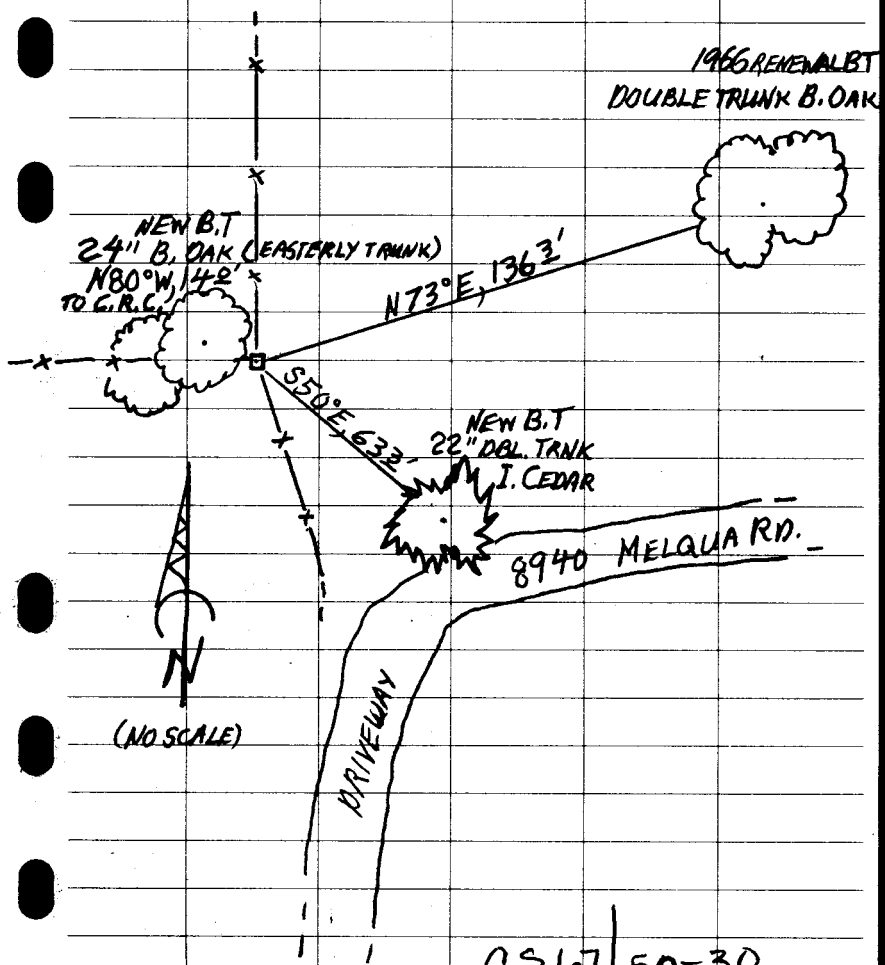
BEARINGS = LOCAL COMPASS BEARINGS

DECLINATION = 14³/₄° E

CS 67/50-30

T265 RTWPLSS 043010

SKETCH:



05-9-19

TOWNSHIP 26 RANGE 07 POINT IDENTIFIER # 043010

PRIMARY CORNER DESCRIPTION NNE Cor. Stucker DLC #43

Alias _____	Description _____
Alias _____	Description _____
Alias _____	Description _____
Alias _____	Description _____

Original - J.A. Burnett, under Contract #75 dated Nov. 22, 1856

Set a stake as per instructions. Quadrangular trench stone is center.

Arthur Boyer, Doug. Co. Surveyor - B.A. Lane; Will Long; John Paulson; L.E. Thompson - Oct. 26, 1937 - M 3-56; "Old" corner book, page 76.

Found original sandstone rock, to which this corner is tied, N. 504.2 ft. and rock at NW corner of this DLC at fence cor. from which this corner is set. Mr. Long and Mr. Thompson are witnesses that location for this corner should be in the center of the county road (as extended North) to the South. Set 4" round Oak post, 1/2" steel bar in the center, for corner from which fence corner bears West 26 ft.

Doug. County Surveyors Office - Vernon Tracy; Mike Stone; Jack Heritage - March 1966 - C.S. File 54/23-13

Found - Rock 10" x 6" x 20" firmly set at very old fence cor. Remnants of old Oak post & 1/2" I.Rod set in top. Fence corner bears West 26.0 ft. from rock to perpetuate Boyers corner.

Set Brass cap at cor. mkd: County Surveyor's Office 1966
N. NE Cor. DLC 43 T26S R7W
New BT - 7" B.Oak N. 73° E., 135.3 ft. mkd: N NE DLC 43 CS BT.
Corner lies at fence corner, fence N. and W. 26.0 ft. East of fence corner, fence W. E. and S.

PROJ 11"
ON SE EDGE OF STONE

PROJ 4"

B.OAK
WESTERLY
TRUNK PASS
BLZ SCAR 25" DIA

DOUBLE TRUNK

138.3 CLK

NEW BT'S

22" DOUBLE TRUNK CEDAR (NOT SCRUB ONLY BT CEDAR IN AREA) S50°E 633'

"B.OAK" NNE PLC 43 "CSBT" ON D.B

MON AT FNC COR FNC N-W SSE

